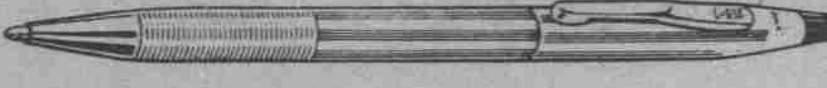


# Welcome Back!

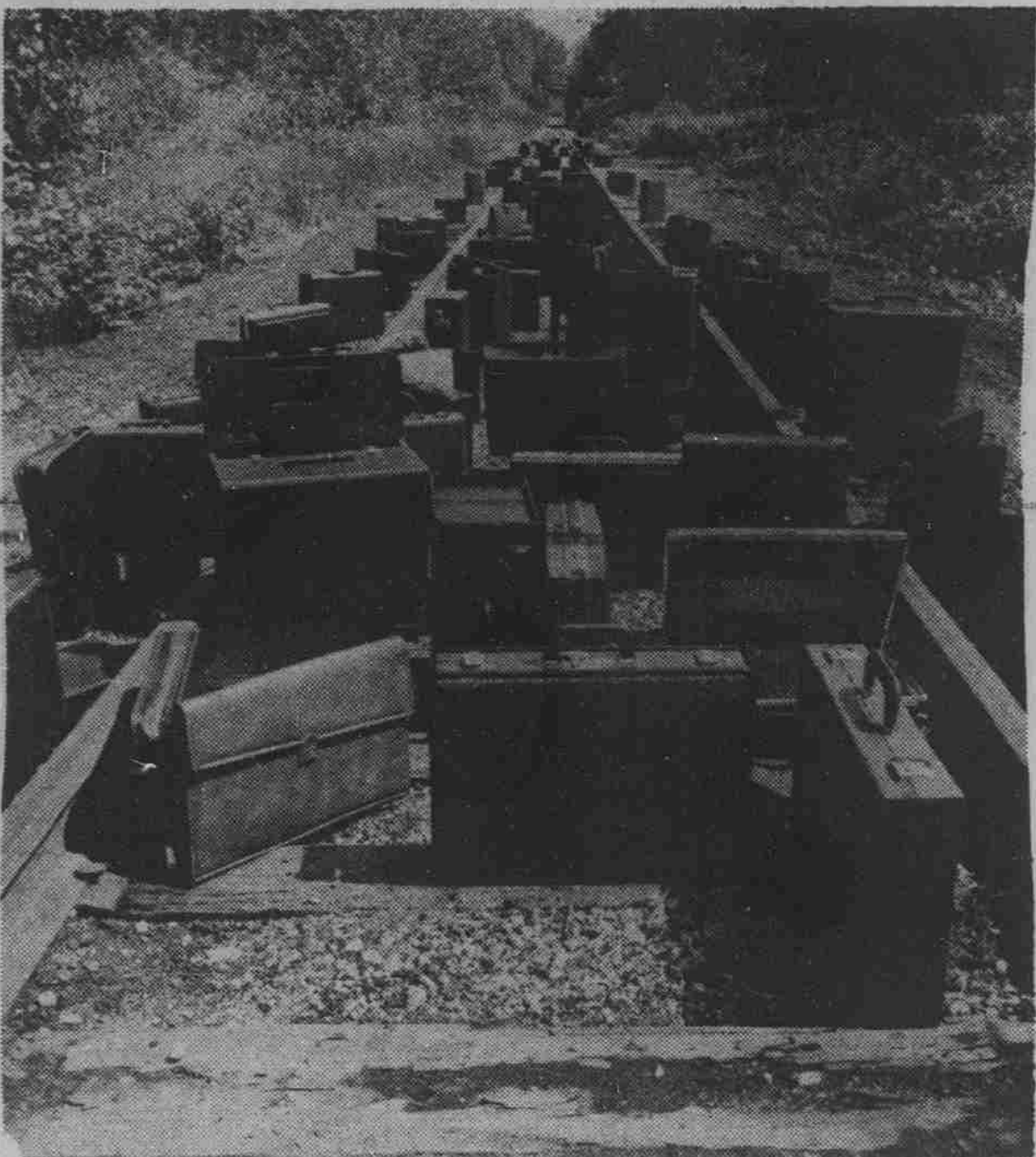
from **STUDENT STORES** to you.



## THE SCHOOL SUPPLY DEPARTMENT

says: Hello again!

Attache cases in lots of styles and colors, pens and pencils, erasers and sharpeners, paper and clips, rubber bands, calculators, film developing, notebooks and binders... an office party every day we're open!



OUR WARMEST GREETING

THE NEW

**HOT SHOT**  
RICH  
HOT CHOCOLATE,  
MOUNTAINS  
OF WHIPPED CREAM,



ONLY  
**25¢**

AND A CHERRY ON TOP

At the  
**Pit Stop** SNACK SHOP  
in  
STUDENT STORES

Plus our traditional favorites

- Make your own sundaes
- Hot, fresh made popcorn
- Hot peanuts
- Hot pretzels
- Hot Chocolate
- and Candy

### Campus Snack Bar Schedules:

**HINTON JAMES & MORRISON DORMS & THE CIRCUS ROOM**  
Mon.-Thurs. 7 a.m.-11 p.m. Sat. 10 a.m.-2 p.m.  
Fri. 7 a.m.-7 p.m. Sun. 7 p.m.-11 p.m.

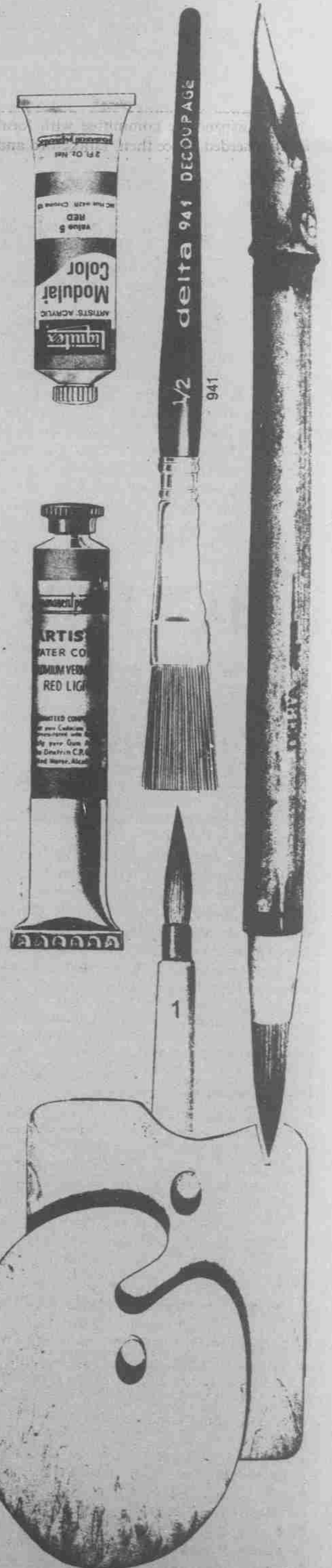
**AVERY, CRAIGE & EHRINGHAUS DORMS**  
Mon.-Thurs. 7 a.m.-9 a.m.; 11 a.m.-1 p.m.;  
3 p.m.-11 p.m.  
Fri. same as M-Th, closing at 7 p.m.  
Sat. 10 a.m.-2 p.m. Sun. 7 p.m.-11 p.m.

**SCUTTLEBUTT**  
Mon.-Fri. 7:30 a.m.-3:30 p.m.

**THE PIT STOP, Daniels Bldg.**  
Mon.-Fri. 7:45 a.m.-9 p.m.  
Sat. 11 a.m.-5 p.m. Football Saturdays 9 a.m.-6 p.m.

## AESTHETIC SALUTATIONS FROM OUR ART DEPARTMENT

- oils
- acrylics
- watercolors
- gesso
- mediums
- varnishes
- brushes
- canvas
- charcoal
- pens
- pencils
- tapes
- screens
- letters
- stencils
- cutters
- paper
- hammers
- chisels
- knives
- and more
- and more
- and more
- and more!
- A fantastic and dazzling array.



## from THE COLLEGIATE WEAR DEPT.

Where you been so long...



**CAROLINA BLUE-TRIMMED SHORTS & T-SHIRT.** 199% Sanforized Cotton Twill — with imprint. Available at Student Stores. Made by Velva Sheen.



**POLYCOTTON T-SHIRTS.** Solid-color trim with imprints. Available at Student Stores. Made by Velva Sheen.

**SOFTBALL JERSEY.** Raglan sleeves, contrasting sleeve & body color.

Available at Student Stores. Made by Champion.



**BASEBALL UNDER-SHIRT JERSEY.** Raglan sleeves, solid or ribbed collar, 100% cotton.

**TRADITIONAL CAROLINA BLUE JERSEY.** Polycotton blend. Available at Student Stores. Made by Velva Sheen.



Almost any item available **IMPRINTED** with the name, device, slogan, or symbol of your choice, too, right in our store!



**CAROLINA SWEAT-SHIRT.** Heavily fleeced 92% cotton blend, knit cuffs & waist. Available at Student Stores. Made by Velva Sheen.