

# Pitching staff improved

By LEE SULLIVAN  
DTH Staff Writer

The North Carolina Tar Heels fall baseball season was a success, especially in the pitching department. Carolina assistant coach Mark Scalf said Monday.

Scalf, in his second year as Coach Mike Roberts' assistant, said that the fast-paced short season accomplished what it was supposed to in allowing the younger players to acquire game experience and let the coaches see the players perform in actual game competition.

Scalf said the pitching performance of the Tar Heels was the most positive aspect of the season.

"The pitching staff really improved over the season," he said. "The younger guys especially showed an increase in poise and confidence on the mound."

Scalf credited the promising pitching performances to a new pitching coach, Howard McCullough, who along with graduate assistant Ronnie Rudd round out this year's coaching staff.

"Howard did a very good job by trying to move the pitchers as far along as possible," Scalf said.

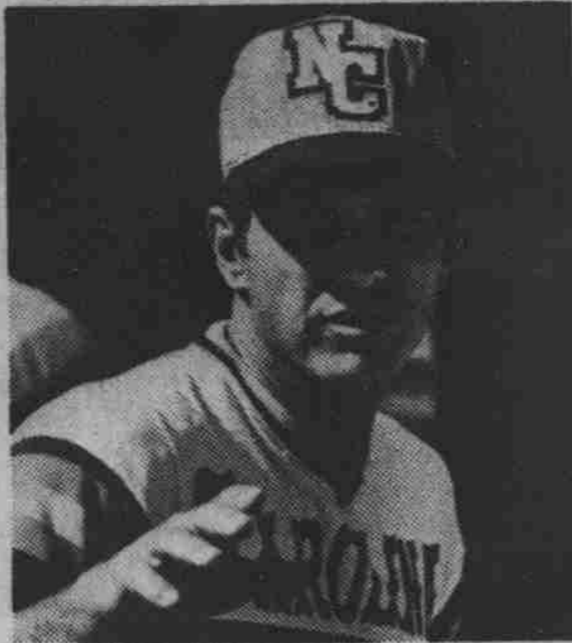
While the pitching was a welcome surprise to the Carolina staff, Scalf was worried about the Heels' hitting attack.

"We just didn't hit like we are capable of hitting. The young guys got better and learned how to relax at the plate, but in the spring all the players, one through nine, are going to have to hit."

Scalf said that the fifteen double-headers were viewed as practice games and admitted that he didn't know exactly what the Tar Heels' record for the month long season was.

"I guess we lost about seven of the thirty," he said. "But, the important thing is we got to see where we need to improve and where the new players can fit in."

The Tar Heels have some important holes to fill from last year's team and Scalf said that he believed this year's team could fill those gaps.



Coach Mike Roberts

# JV tryouts set

Tryouts for those UNC students interested in playing JV basketball will be at 7:30 p.m. Wednesday, Oct. 21 in Carmichael Auditorium. The JV squad, coached by assistant basketball coach Roy Williams, went 10-4 last season and have 16 games scheduled for this season. Last year 56 students tried out for 16 positions.



# Sports

- Volleyball vs. East Carolina at Carmichael, 7 p.m.
- Field Hockey vs. Duke at Hinton James Field, 3 p.m.

## DEADLINE DEMONS DISPELLED!

Highest Quality Copies  
Bindings  
Self-Service Copier

SEVEN DAYS A WEEK

# COPYTRON

Columbia & Franklin 933-2679

YES, MA'AM, I READ IN THE PAPER ABOUT YOUR SCHOOL FOR GIFTED CHILDREN

MY SCHOOL IS ALL RIGHT, BUT I LIKE YOUR APPROACH BETTER

IS THIS BAG GOING TO BE BIG ENOUGH FOR ALL THE GIFTS?

THESE ARE MY CLOTHING AND SHOE SIZES. IF YOU GIVE OUT ICE SKATES, I'D LIKE THEM ABOUT ONE SIZE SMALLER...

...AND THAT'S WHY I'M URGING YOU TO SIGN, BURBERRY—FOR THE GOOD OF THE WHOLE NATION!

THIS MAN MUST BE STOPPED BEFORE HE CAN PUT ALL OUR PRECIOUS RESOURCES INTO THE HANDS OF OIL AND OTHER SPECIAL...

OH, DICK, DICK, OLD BOY!

DICK, WOULD YOU LIKE TO SEE THIS CLUB ACCEPTING ARABS ONE DAY? ARE YOU READY FOR THAT?

WELL, NO, OF COURSE NOT, BUT... LOOK, DICK, IF IT'S TREES YOU WANT, JUST USE MY CAMP IN MAINE ANY TIME!

by Garry Trudeau

PLITT THEATRES REDUCED TICKETS AVAILABLE AT THE UNION DESK.

**CAROLINA**

Chapel Hill 942-3881

Jacqueline Bisset Faye Dunaway  
Candice Bergen as Joan Crawford

**RICH AND FAMOUS**  
**MOMMIE DEAREST**

2:40 • 4:50 • 7:00 • 9:20 7:00 • 9:30

Carolina Classics Series  
Fred Astaire • Ginger Rogers

**FLYING DOWN TORIO**

Matinees 3:00 • 5:05 ends Thursday!

**Chili Special**  
every Wednesday Night  
**2.75 with Salad, Bread, Butter**  
**MOLLY MAGUIRE'S**  
Lower Level — NCNB Plaza.

PHONE 942-4737  
**Plaza 3**  
1211 30th St. FRANKLIN  
BARGAIN MATINEES — \$2.00  
TILL 6 PM MON.-FRI. ALL SCREENS  
3:00 • 5:15 • 7:30 • 9:45

**BODY HEAT**  
2:30 • 4:45 • 7:00 • 9:15  
ROBERT DE NIRO  
*True Confessions*  
UNITED ARTISTS

2:30 • 4:50 • 7:10 • 9:30  
Marsha Mason  
*Only When I Laugh*  
A COLUMBIA PICTURES RELEASE

PHONE 942-3651  
**Varsity**  
121 E. FRANKLIN ST.  
\$1.00 ADMISSION  
— ALL SEATS  
— ALL TIMES  
3:00 • 5:05  
"Eye of the Needle" (R)  
7:10 • 9:15  
JOHN TRAVOLTA and NANCY ALLEN in **NOV 01**

**BEAT STATE EXTRAVAGANZA**  
**THURSDAY, OCT. 15 9:00 PM**

**DELTA UPSILON PRESENTS**  
**"BILLY SCOTT and THE PROPHETS"**  
**NEW TIN CAN**

TICKETS \$1 ADVANCE — \$2 AT THE DOOR  
Call 942-4986 for information

SPONSORED BY  
DELTA UPSILON—SWEET CAROLINES—STROH'S BEER

★★★★★  
**CAROLINA SPORTS**

Great Economical Entertainment  
**DOUBLE FEATURE TODAY**

3 pm — UNC FIELD HOCKEY vs. Duke, Hinton-James Field  
7 pm — Tar Heel Volleyball vs. ECU, Carmichael Auditorium

**FREE ADMISSION**

**Hardee's**  
213 West Franklin St. & 1800 Chapel Hill-Durham Blvd.

"What Shall We Do About Mother?"  
(How to deal with aging and the aged)  
Tues., Oct. 13, 7 PM  
Upper Lounge Carolina Union  
Videotape and Informal Discussion  
Carolina Union Human Relations Committee Presentation

**THE Daily Crossword** By Sophie Fierman

<p><b>ACROSS</b></p> <p>1 Joyous</p> <p>5 Hen's output</p> <p>9 Wonderland girl</p> <p>14 Fury</p> <p>15 Middy</p> <p>16 Get a new tenant</p> <p>17 Particle</p> <p>18 Singer</p> <p>19 Baby hooter</p> <p>20 Rex Stout's detective</p> <p>22 Billiard shot</p> <p>23 Worthless</p> <p>24 Raise</p>	<p>26 Christiania</p> <p>29 Legal agreement</p> <p>33 Instrument</p> <p>37 In a frenzy</p> <p>39 Loathe</p> <p>40 In a pile</p> <p>41 Beak</p> <p>42 Sign on a rest room</p> <p>43 Radiate</p> <p>44 Good guy</p> <p>45 Jargon</p> <p>46 Electric measure</p> <p>48 Stamp</p> <p>50 A few</p> <p>52 Ambassador</p> <p>57 Dame</p> <p>Nellie —</p>	<p>60 Michael Arlen's investigator</p> <p>63 Table spreacis</p> <p>64 Grey's white</p> <p>65 Melody</p> <p>66 Ou look</p> <p>67 Otherwise</p> <p>69 Beaches</p> <p>70 Coarse grass</p> <p>71 Being: Lat.</p> <p><b>DOWN</b></p> <p>1 Confer</p> <p>2 Not now</p> <p>3 Marketplace</p> <p>4 The masses</p> <p>5 Diplomatic messengers</p> <p>6 Ambition</p> <p>7 Watson's game</p> <p>8 Scoff</p> <p>9 Fragrances</p> <p>10 Ross Macdonald's private eye</p> <p>11 Woos</p> <p>12 Mediocre grades</p> <p>13 Small: suff.</p> <p>21 Shout of triumph</p>	<p>25 Cartoon scream</p> <p>27 Lolo or Abbe</p> <p>28 Hebrew measures</p> <p>30 Tolloed</p> <p>31 Premiering</p> <p>32 Rebecca or Mae</p> <p>33 All — native</p> <p>34 Throat-clearing sound</p> <p>35 Tide</p> <p>36 Fleming's agent</p> <p>38 Part of an orchestra</p> <p>42 Head banded</p> <p>44 Bottom of a skirt</p> <p>47 Entrees</p> <p>49 Saxon king</p> <p>51 Anesthetic</p> <p>53 Cake frosting</p> <p>54 Farm divisions</p> <p>55 Labors</p> <p>56 Related maternally</p> <p>57 Swamp plant</p> <p>58 A Raine</p> <p>59 Depend</p> <p>61 Tough spot</p> <p>62 Facilitate</p>
-----------------------------------------------------------------------------------------------------------------------------------------------------------------------------------------------------------------------------------------------------------------------------------------------------	---------------------------------------------------------------------------------------------------------------------------------------------------------------------------------------------------------------------------------------------------------------------------------------------------------------------------------------------------	--------------------------------------------------------------------------------------------------------------------------------------------------------------------------------------------------------------------------------------------------------------------------------------------------------------------------------------------------------------------------------------------------------------------------------------------------------------------------------------------------------------------------------------------------------	------------------------------------------------------------------------------------------------------------------------------------------------------------------------------------------------------------------------------------------------------------------------------------------------------------------------------------------------------------------------------------------------------------------------------------------------------------------------------------------------------------------------------------------------------------------------------------------

Yesterday's Puzzle Solved:

APTS MUSH LAINE  
TOUTY TIRA ERROL  
WATE GIAS STAGE  
ACIAR HIRSESENSE  
THREAT ORO  
FISHOUT OF SWALE  
INTO TUNES ARIA  
SCALE BETHEGOAT  
TAGEND REAP  
CIA DICTUM  
GOWCAI CHER ROISE  
ARRAS HADA URALL  
SLAKE ERIC SAGE  
HOPED SEITH THEE

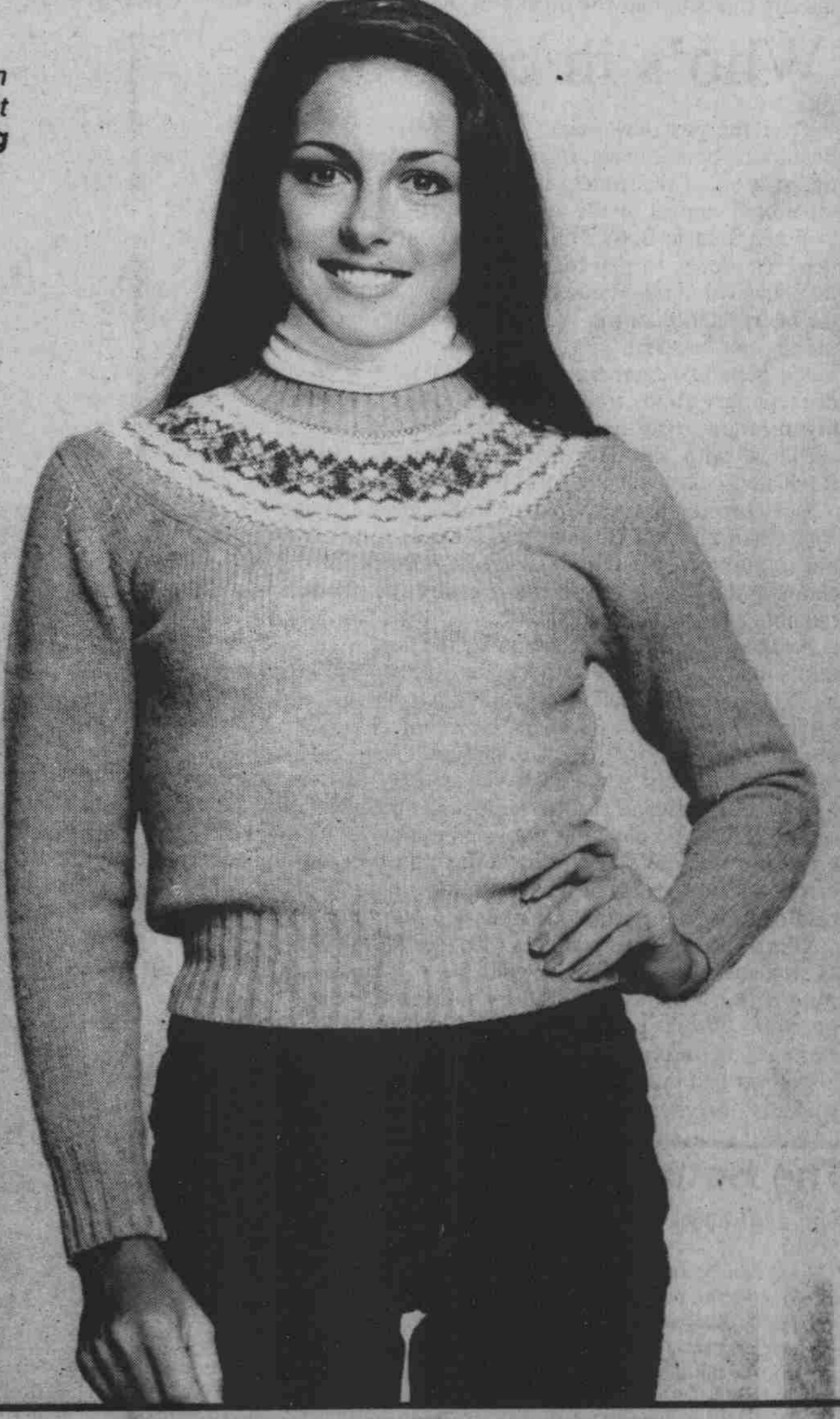
1	2	3	4	5	6	7	8	9	10	11	12	13
14				15				16				
17				18				19				
20				21				22				
23				24				25				
26				27				28				
29				30				31				
32				33				34				
35				36				37				
38				39				40				
41				42				43				
44				45				46				
47				48				49				
50				51				52				
53				54				55				
56				57				58				
59				60				61				
62				63				64				
65				66				67				
68				69				70				
71												

# Grand Opening Sale

**Starts Wed., Oct. 14 at 8 a.m.**

Now there are two Tempo Fashion Stores where you can get quality brand name Junior and Misses fashions at everyday 30-60% Savings. Come to our Grand Opening Sale at our brand new Village Plaza Store or shop our Celebration Sale at our Townridge Square Store.

- Plaid & Solid SHIRTS** Values to \$26 **\$6**
  - Crew & V-neck Velour TOPS** Values to \$21 **\$6**
  - Hukapoo Corduroy PANTS** Values to \$29 **\$8**
  - Plaid Pleated SKIRTS** Values to \$32 **\$9**
  - Fair Isle SWEATERS** Values to \$29 **\$9**
  - Sasson Denim JEANS** Values to \$38 **\$12**
  - Jack Winter SWEATERS** Values to \$28 **\$12**
  - Classic Wool Blend BLAZERS** Values to \$64 **\$19**
- Limited quantities on sale items.



Register this coupon to win a \$50 Gift Certificate.

**\*\$50 Gift Certificate Contest**

- No purchase necessary
- One entry per family only
- Entry deadline Saturday, Oct. 17 at 6 p.m.
- Drawing to be held Sunday, Oct. 18
- There will be 20 winners drawn at each location.

Name \_\_\_\_\_  
Address \_\_\_\_\_ Phone # \_\_\_\_\_  
City \_\_\_\_\_ State \_\_\_\_\_ Zip \_\_\_\_\_

# TEMPO FASHIONS

**VILLAGE PLAZA / 225 S. Elliott Rd.**  
(Adjacent to Kroger Plaza)/Chapel Hill  
Mon-Sat: 10 a.m.-9 p.m.  
Sun: 1 p.m.-6 p.m.

**TOWNRIDGE SQUARE CENTER**  
6548 Glenwood Ave. / Raleigh  
Mon-Sat: 9:30 a.m.-9 p.m.  
Sun: 1 p.m.-6 p.m.