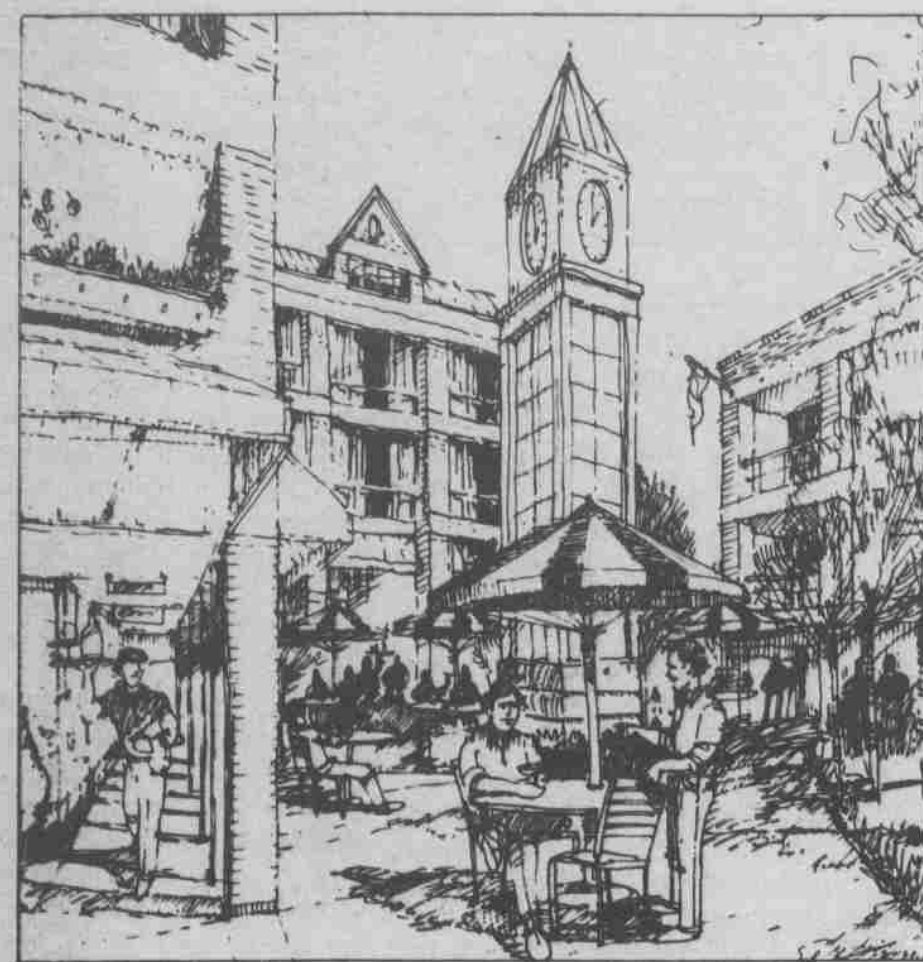
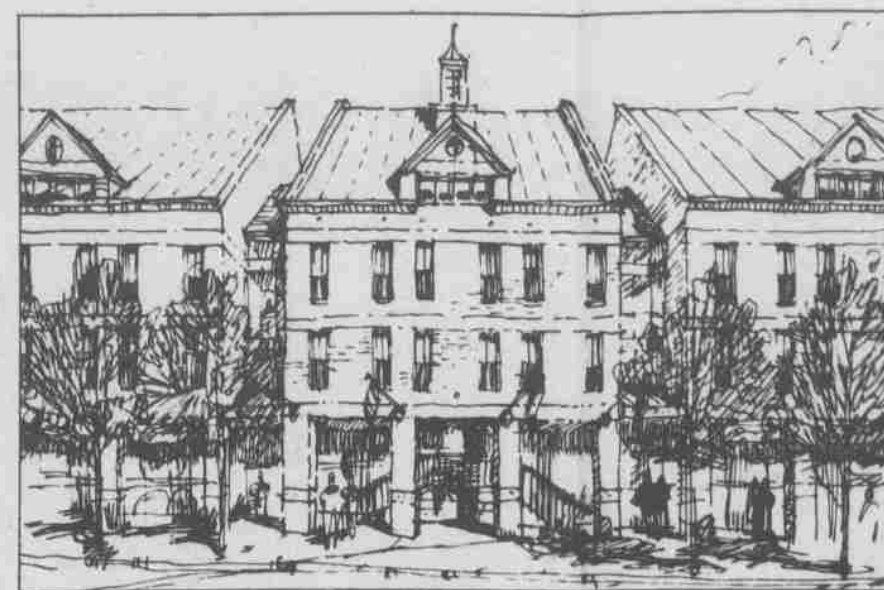


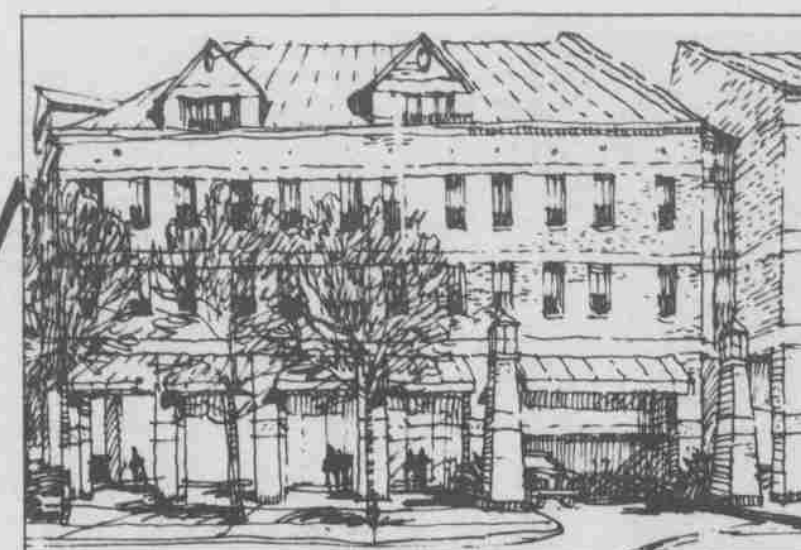
# Rosemary Square: An artist's conception



Courtyard Plaza in Rosemary Square



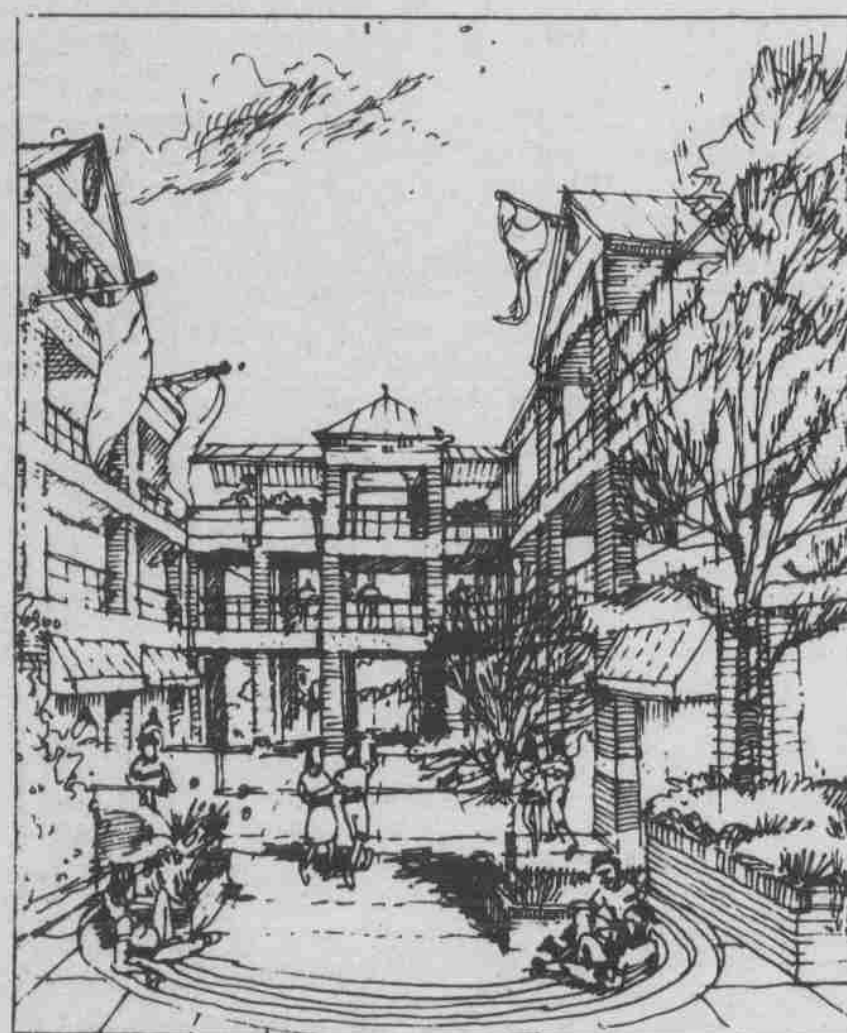
View from Rosemary Street



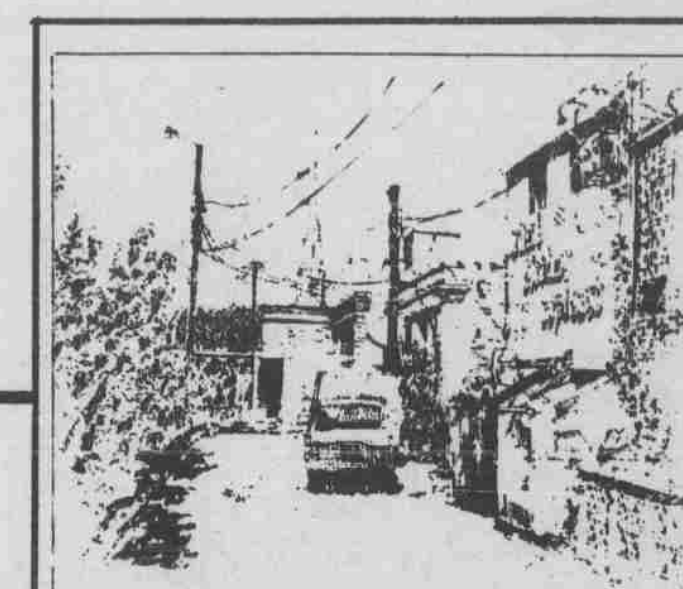
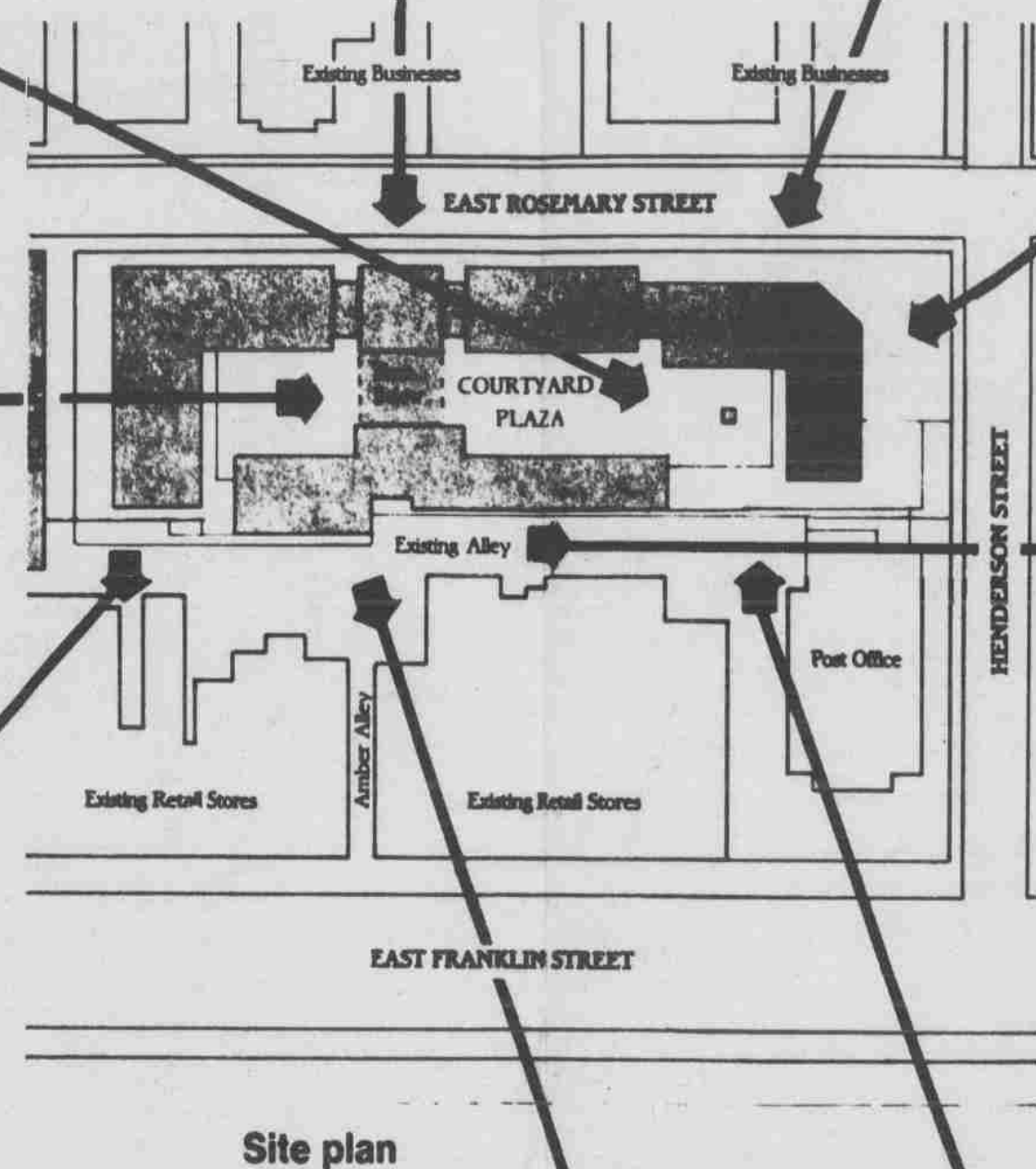
View from corner of Rosemary and Henderson Streets — Rosemary Street view



View from corner of Rosemary and Henderson Streets — Henderson Street view



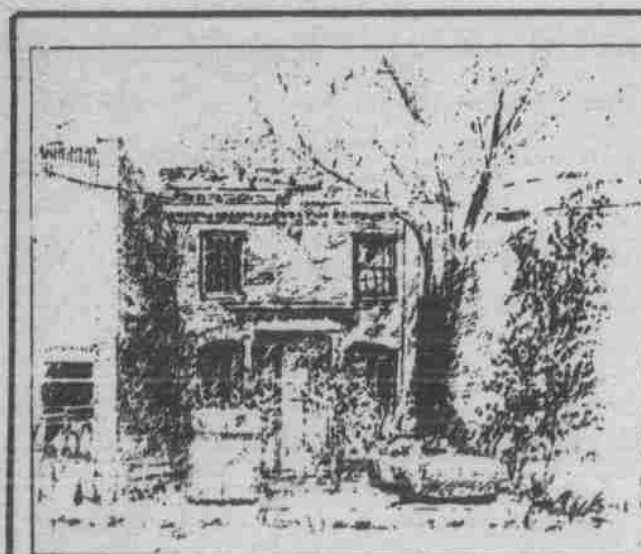
View of Pedestrian Courtyard from NCNB Plaza side



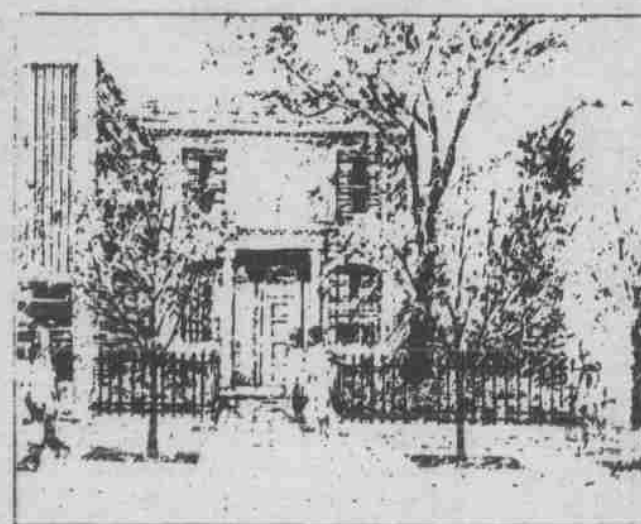
Before



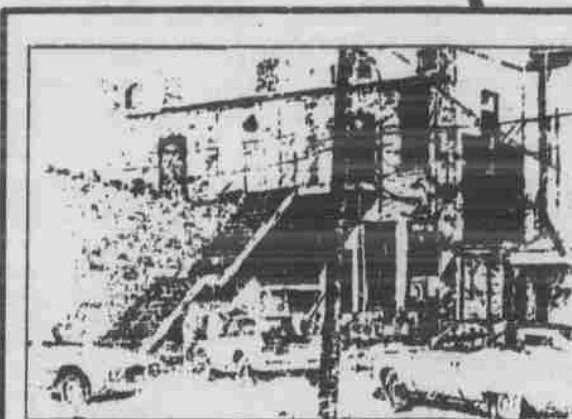
After



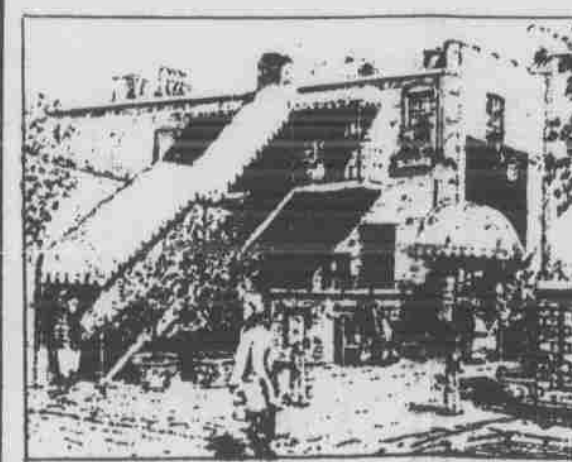
Before



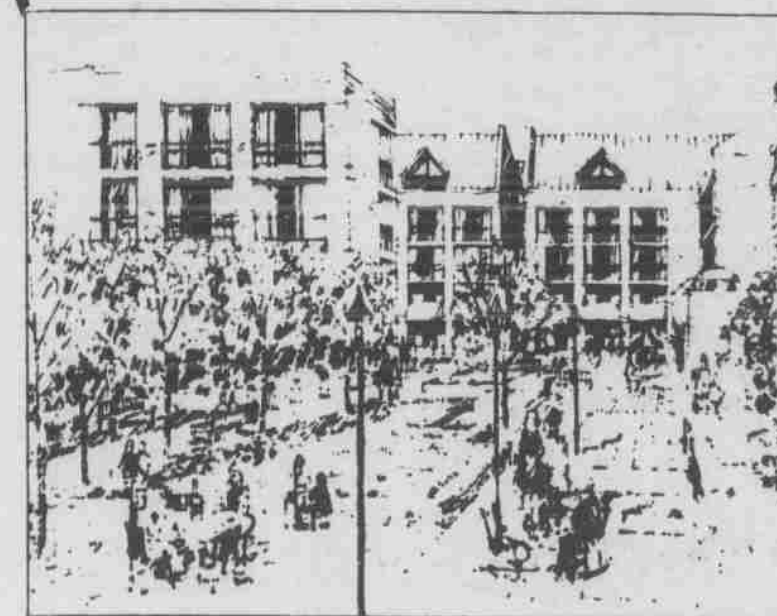
After



Before



After



View from Franklin Street side, adjacent to Post Office building, looking toward interior plaza

This presentation and layout by Jim Greenhill

Map and sketches reproduced by permission of The Fraser Group  
Details of the plans may not accurately reflect current proposals