

### Weather

Today: Cloudy with a chance of rain. Low 33. High 47.  
 Wednesday: Party cloudy and cool. Lows in the upper 20s. Highs in the 40s.

**RTVMP to beam up  
 Trekkie producer** — Page 4

**Nhi Le points fencing  
 in right direction** — Page 5

**MLK film**

7 & 9:30 p.m., Union

# The Daily Tar Heel

Serving the students and the University community since 1893

Volume 94, Issue 121

Tuesday, January 20, 1987

Chapel Hill, North Carolina

News/Sports/Arts 962-0245  
 Business/Advertising 962-1163

## Chapel Hill — a swelling place to live for tomorrow

By **SUSAN JENSEN**  
 Staff Writer

It is felt in the thermo-controlled air of new condominiums; seen in the construction on nearly every road in town; suggested by the pinstripes of the guy in front of you at the store.

It — Chapel Hill — is changing its image and becoming a metropolis.

The population now stands at about 39,000 and is increasing rapidly. By 2025, Chapel Hill population will have risen to between 72,000 and 90,000, Chapel Hill Planning Board members estimate.

What types of people are coming to Chapel Hill and what is drawing them here?

Weather, location, abundant cultural activities, athletics, and super-

### Growth and Development

- Monday: Housing picture
- Tuesday: A changing image
- Wednesday: Planned growth
- Thursday: Side effects
- Friday: Goodbye, village

ior education in the city schools and at the University are major attractions, as well as the ever-increasing number of jobs in the Triangle.

In 1985, there were more service jobs in Chapel Hill than any other kind. Retail and office jobs also

employed large numbers of residents.

Service jobs accounted for 74.64 percent of all jobs in Chapel Hill; retail/wholesale, 7.18 percent; high-way retail, 7.4 percent; office, 7.42 percent; and industrial, 3.36 percent.

The planning board has projected that service agencies will continue to employ the largest percentage of workers in town, with office jobs increasing and the other jobs decreasing a small amount.

With the expansion of Research Triangle Park and the relocation of major corporate headquarters such as IBM into nearby towns, what was once a quiet college town is now providing bedrooms for hundreds of white-collar commuters.

Transplants from other areas

account for over 80 percent of Chapel Hill's annual growth rate of two percent. Most residents are between 15 and 39 years old.

"Given the trends, we're having a marked increase in working-class yuppies and middle-management individuals in their late 40s and 50s," said Arthur Jackson, a long-range planner for the planning board.

The majority are coming from Michigan, Ohio and New York, from both larger towns and those of similar size, said Leonard Van Ness, director of the Chapel Hill/Carrboro Chamber of Commerce.

Although the whole 15-39 age bracket is growing, those between 18 and 24 years old are settling in en masse, Van Ness said.

Chapel Hill itself does not offer

many high-tech jobs. "There is a real lack of young professionals (working) in Chapel Hill, but that is one part that will grow as the community matures," Van Ness said.

#### Balancing types of growth

Travelers through Chapel Hill can easily see residential development.

In 1962, residences covered about 36.1 percent of all developed land and far surpassed, by a ratio of 11 to 1, retail and industrial buildings which occupied only 3.1 percent.

By 1984, residential development had increased to almost 50 percent, but retail and industrial development had only increased by less than one percent, to 3.7 percent.

Despite the growing gap between the numbers of homes and the

number of workplaces, Van Ness said he thinks Chapel Hill is growing in a healthy manner.

"The unemployment rate has virtually remained the same as it has been," he said. "Jobs are created to go along with the population growth."

Two thousand new jobs evolve each year, many of them in construction, he said. Others are at the University, with its variety of research, administrative and teaching positions.

But the town will reevaluate its employment situation as it grows. "We're looking to see if what we are doing is creating well-paying jobs for the community," he said.

See CHAPEL HILL page 2

## Heels spank State

By **BOB YOUNG**  
 Assistant Sports Editor

It is said that the good teams win in the face of adversity. Last night at Carmichael Auditorium, the fifth-ranked UNC wrestling team overcame not only a traditional rival — the 11th-ranked N.C. State Wolf-pack — but also a great deal of adversity.

The final score of 30-12 disguises the fact that it was not an easy win for the Tar Heels. They needed every bit of talent they could muster for the victory that brought their record to 11-4. Consider the following obstacles.

**Obstacle No. 1:** Two of North Carolina's ACC wrestling champions from 1986, Al Palacio and Lenny Bernstein, had the flu and were questionable Monday morning.

**Obstacle No. 2:** UNC's Chip McArdle had to face Marc Sodano, the nation's third-ranked wrestler, in the match at 126.

**Obstacle No. 3:** The Tar Heels' Rob Koll, the country's top-ranked performer at 158, never even got to the opportunity to wrestle.

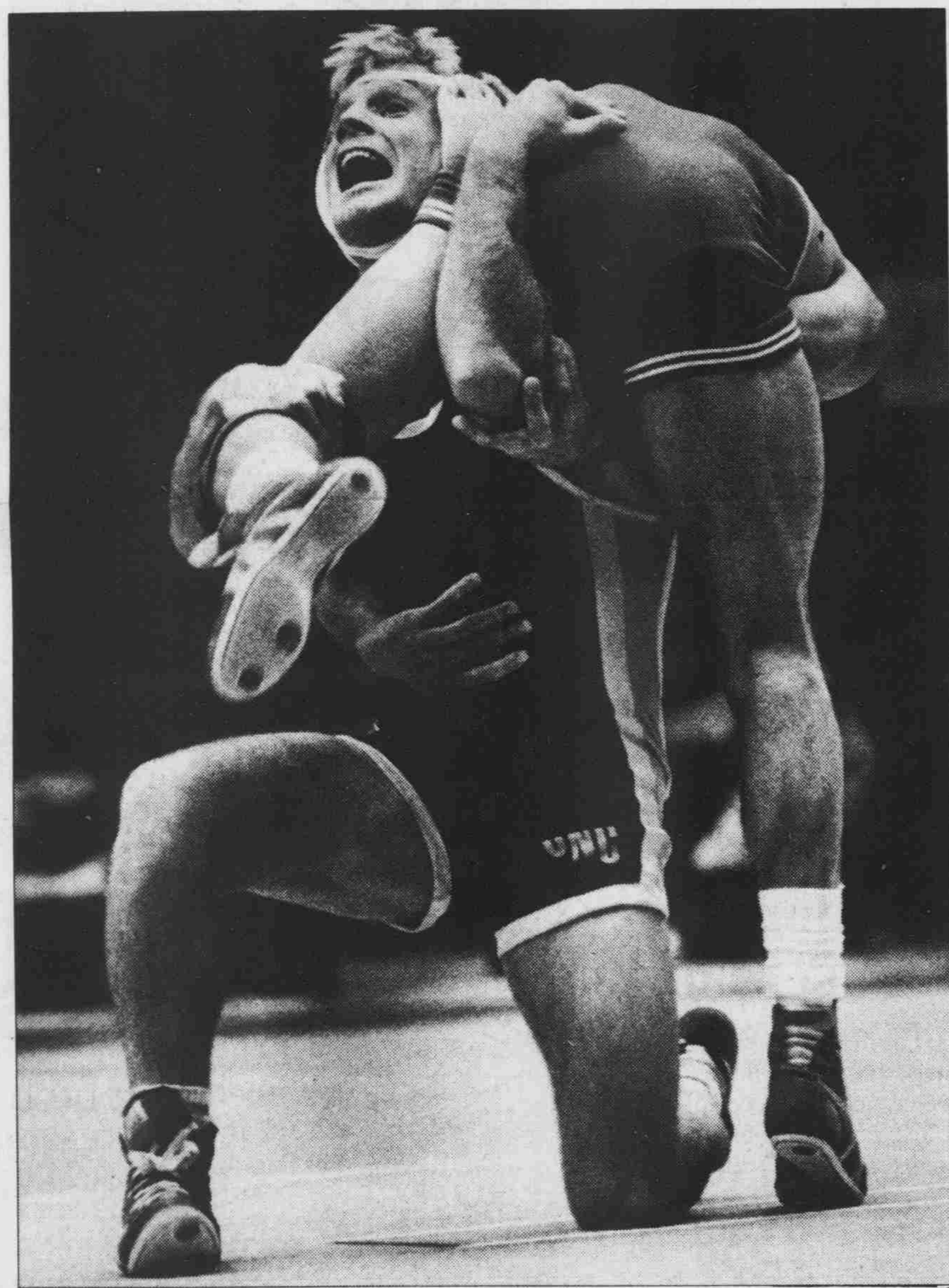
**Obstacle No. 4:** UNC lost two of the last three matches on the evening.

As for the first drawback, Palacio and Bernstein both decided to ignore sinus congestion and concentrate on takedowns as each pulled out victories. Palacio, the nation's top-rated wrestler in the 118-lb. class, easily defeated State's David Cummings, 8-2. But Bernstein had a tougher time.

Monday morning, Bernstein told UNC coach Bill Lam that he didn't feel he would be able to lose the five pounds necessary to compete at 142. Lam told him to give it a try, but he wouldn't force him to compete.

Bernstein made the weight limit, but then had to face 10th-ranked Joe Cesari. It was a close match through-

See WRESTLING page 3



UNC's Chip McArdle holds on to the leg of N.C. State's Marc Sodano in the match at 126 Monday night

## Power plant will electrify University

By **JEAN LUTES**  
 Assistant University Editor

The \$96 million price tag of what one UNC official calls "the University's most significant construction project ever" dwarfs even the \$33.8 million spent to build the Smith Center and it'll heat up much more than 21,444 basketball fans.

Replacement of UNC's existing power plant — located off Cameron Avenue — will begin in 1988, according to Claude E. "Gene" Swecker, associate vice chancellor of facilities management.

"This is the biggest project we've ever undertaken," Swecker said Monday. "Before this, the biggest was the Smith Center, which was just completed last year."

The four 40- to 50-year-old boilers in the plant will be replaced by two efficient boilers, and a bigger electricity generator will be installed, he said.

The project was approved by the state legislature in 1985, he said.

Construction should be finished by 1991, Swecker said. When the boilers begin operating in the mid-1990s, the plant will generate more electricity, he said, but Duke Power Co. will continue supplying most of the campus' electrical power.

"The significant portion of the electricity comes from Duke Power, and that won't change now or in the future," said Physical Plant Director Herbert Paul. "We'll be able to generate more electricity than we do now." But Paul said the plant's purpose is not to generate electricity so less of Duke Power's electricity is used. The extra power will help balance the energy flow for the campus.

Paul said the reconstruction is needed for three reasons:

■ The plant is old, and "bits and pieces" of it have deteriorated, making the plant less efficient.

■ As the number and square footage of buildings on campus increase, the plant would eventually be unable to meet the University's heating and electrical needs.

See POWER page 2

## Officers to get offices

By **JEAN LUTES**  
 Assistant University Editor

This time next year, University police will be moving into a new, \$1.2 million building on South Campus, if construction is finished on schedule, UNC officials said Monday.

The building — to be built between the South Campus water tower and Morrison Residence Hall — will house about 50 University police employees, who are now divided between offices on Franklin Street and in the Campus Y building.

"We're strung out now," Maj. Charles Mauer of University police said Monday. "The traffic office is in the basement (of the Campus Y), my office is on the third floor, and my squad room is on Franklin Street."

Construction on the new

See OFFICES page 2

## Worley begins campaign in CAA president race

By **KIMBERLY EDENS**  
 Staff Writer

Denny Worley, a junior economics major from Canton, has announced his candidacy for Carolina Athletic Association (CAA) president.

Worley said he doesn't think there is a just a single purpose of the CAA. "We're there to serve the purpose of students concerned with varsity athletics, as well as 'weekend athletes' those concerned with intramural and club sports," he said.

Homecoming has come a long way in the last two years, Worley said. "I want more student involvement by using different incentives, like better prizes and more recognition of winners, as well as block seating in the card section at the next home game for winners of the float competition," he said.

Worley is currently CAA vice

### Elections 1987

president of tickets, and he said he was instrumental in working with Smith Center officials to create the current student ticket policy.

"If there's someone out there who has a better idea I want to hear it," he said. "I want comment. I think together we can work something better out."

Increasing spirit is also a major priority, Worley said. "I'd like to see the Carolina Fever Committee expanded and events like the pep rallies before home football games become a Friday night tradition," he said.

"I'd also like to look into the founding of a Fever Club," he said. "That group could coordinate road trips and also bring spirit and enthusiasm to the games."



Denny Worley

Worley also said he will work to make ticket pick-up easier for North Campus and off-campus students. "I would like to coordinate with Chapel Hill Transit to get the U-bus circuit

See WORLEY page 2

## Hill announces decision to enter race for SBP

By **JO FLEISCHER**  
 Assistant University Editor

Gordon Hill, a junior international studies and public policy analysis major from Kinston, has announced his candidacy for student body president.

Hill stresses "feasibility" in his campaign. He said he is interested only in tackling what can reasonably be done.

A one-year SBP term creates the need for executives who can further the successes of the previous president while adding initiatives of their own, Hill said. "A lot of time goes into the organization process, in staffing the administration and in promoting student interests," he said. "The president can reasonably only focus on three or four main goals."

Hill said he favors the establishment of a student credit union

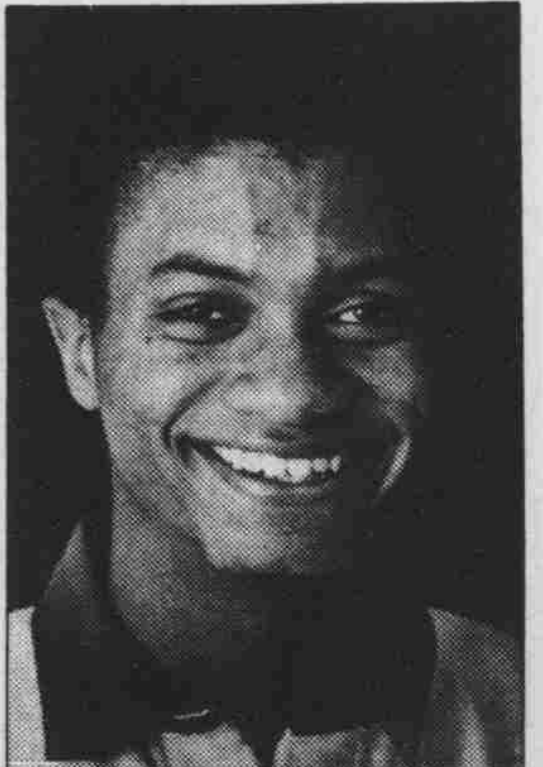
### Elections 1987

because it could be both convenient and responsive to student's needs. He would also examine the feasibility of a "co-op program," to combat decreases in student aid, he said.

Students would be placed in jobs relevant to their majors for a semester and they could use these earnings for the next school semester.

Campus pride is another issue Hill said he would like to address. "Students should be interested in not only that the basketball or lacrosse team is number one, but in making others aware in how good the educational opportunities are," Hill said. "Pride needs to be here before it can spread."

Minority recruitment and the recruitment of graduate students would be easier if people outside the



Gordon Hill

University saw the pride UNC students had in education, sports and university life, he said.

Hill said he favored voluntary campus security programs as

See HILL page 2

Ooey, gooey rich'n'chewy inside. Left, right. Take a bite. — The Big Fig Newton