

Surf shop wave hits Chapel Hill

By WILLIAM TAGGART
Staff Writer

It's high tide for beach clothing in Chapel Hill.

Inner Island Surf & Sport, a new beach clothing and equipment store, opened almost a month ago on Franklin Street above Four Corners Restaurant.

This is the second store catering to beach wear that has opened in Chapel Hill since the fall semester began.

Brothers Neal and Phil Sumner, co-owners of the store, operate two more Inner Island shops in Burlington and Durham.

The Sumners picked this location because it is right in the heart of Franklin Street, store manager Kim Webb said. She also said that being located above Four Corners has been good for business.

"Business has been great," said Ray Loftus, a salesman at the shop and a junior journalism major from Wilmington.

Webb said sales have nearly doubled since the phone line was installed and advertisements began a week ago.

A wide variety of beach clothing is available, as well as surf boards, water skis, posters and surfing videos. The store also carries snow skis and equipment.

"If it's in Surfer Magazine, we have it," Loftus said.

Webb said that all the styles and fabrics are imported, but the clothing is manufactured in the United States.



An employee serves a customer at Inner Island Surf & Sport

DTH/Matt Plyler

Prices are "equivalent to any price you would find at the beach," Loftus said.

Inner Island offers a discount on snow skis. "(The prices) are cheaper than at the slopes," he said.

A unique feature of the store is a ride board where people can find rides to the beach. Loftus said he hopes

this will set up a network of transportation to and from the beach.

The layout of the store makes it easy for customers to shop.

"It's an effective atmosphere," said Jerrell Coleman, a freshman pre-law major from Stedman. "You can go in and see everything very easily."

When asked about competition

from Franklin Street's other beach store, The Beach Connection, Loftus said, "We have an established clientele in the Triangle area."

Billy Dillon, manager of The Beach Connection, said he hasn't noticed a change in business. "We haven't been open but a month, so I can't really tell," he said.

Task force

from page 1

West, STOW Governor Karin Heath, STOW Student Congress representative Anna Baird, RHA President Kelly Clark and former Student Body President Bryan Hassel.

come from student rent, Kuncel said. Some of the money for restoration may come from a bicentennial campaign fund that will start up in 1988 or 1989, he said.

Funding for the renovations will

TRIPODI'S II

Uptown Deli and Restaurant

Come in to see our displays of over 30 desserts, cheesecakes, tarts, pies, cookies & croissants

- | | | |
|--------------------|----------------------|------------------|
| 40 Deli Sandwiches | Croissant Sandwiches | Knishes |
| Potato Burger | German Sub | Hot Roast Beef |
| Reuben | Pizza Bagel | Bagel Sandwiches |
| Blue Cheese Roast | Stromboli | 3-D Club |
| International Sub | Muffelettta | Soups |
| Blintzes | Turkey Reuben | Salads |
| Deli Plate | Italian Sub | Omelettes |
| | Bagel Eggel | |

The new added attraction the "BOBOLI" a delicious cheese crust filled with your favorite topping.

COUPON

Buy one Boboli and get one FREE! with purchase of equal or lesser value. offer expires Oct. 31, 1987

Franklin Centre 942-4616
Lower Level Mon.-Sat. 11-8

Divestment

think the group may be able to set some clear goals, functioning as more than a discussion group.

Cindy Hahamovitch, Anti-Apartheid Support Group member, called Eubanks last week to discuss the committee's problems.

"We really want to give this committee another chance," Hahamovitch said, "but we don't want the BOT to stall our push for divestment (of UNC funds from companies doing business in South Africa)."

In a phone interview Thursday, Eubanks said he understood the committee to be a study group with

the option of making recommendations on divestment to the faculty and to the BOT.

Eubanks said he hoped the committee could reach a solution. "Hopefully, we have reasonable people on the committee who will work for

responsible solutions to the problems at hand," Eubanks said. "Of all things, we should do what's honorable."

Student Body President Brian Bailey, another committee member, said Thursday that he felt Eubanks

would be supportive of the group's work.

It is imperative that the group know what it is doing, Bailey said. "We're not going to be able to get anything done unless the committee has some sort of scope or purpose."

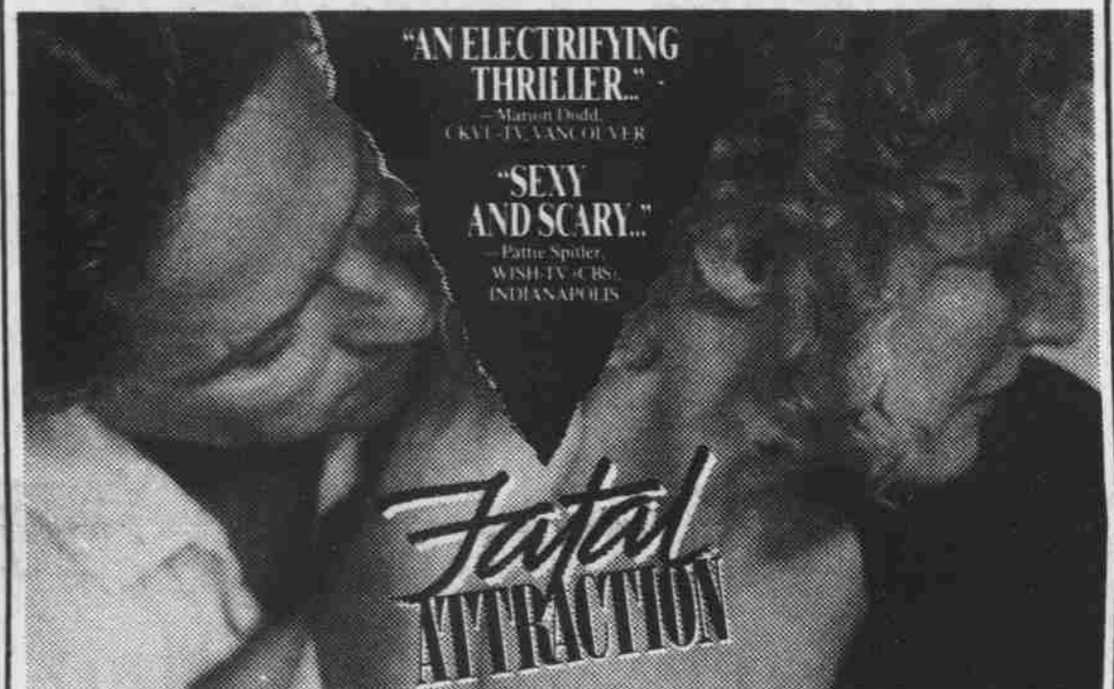
from page 1

Give.

WERE FIGHTING FOR YOUR LIFE

American Heart Association

"THE BEST THRILLER I'VE SEEN IN YEARS... CLOSE AND DOUGLAS TURN IN THE PERFORMANCES OF THEIR CAREERS...HIGH WIRE THRILLS" — John Tibbets, KCTV-TV, Kansas City



MICHAEL DOUGLAS

GLENN CLOSE

PARAMOUNT PICTURES PRESENTS A JAFFE/LANSING PRODUCTION AN ADRIAN LYNE FILM

ANNE ARCHER

MUSIC BY MAURICE JARRE. SCREENPLAY BY JAMES DEARDEEN FROM HIS ORIGINAL SCREENPLAY

PRODUCED BY STANLEY R. JAFFE AND SHERRY LANSING. DIRECTED BY ADRIAN LYNE

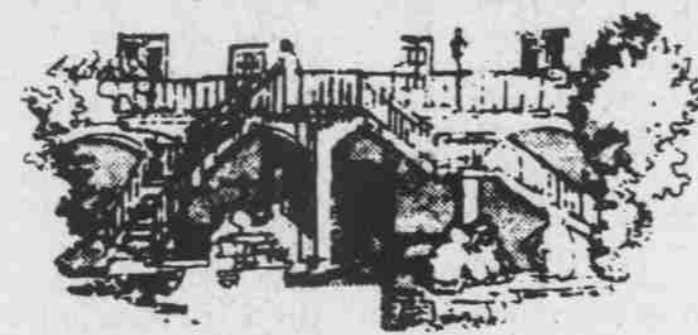
RESTRICTED UNDER 17 REQUIRES ACCOMPANYING PARENT OR ADULT GUARDIAN. ORIGINAL SOUNDTRACK ALBUM AVAILABLE ON DMP-CRESCENDO RECORDS, TAPES AND COMPACT DISCS. A PARAMOUNT PICTURE

Ram Triple

967-8284
NCNB PLAZA

Shows Nightly
7:00, 9:25
Sat & Sun Mat
2:00, 4:25

He's Not Here



presents
CRUIS-O-MATIC
Saturday, September 26

and coming Saturday, Oct. 3
after the Auburn game

FLASHBACK

Don't forget about our Tuesday Draft Special!

\$1.25 Blue Cup \$2.50 Pitcher

HE'S NOT HERE

Village Green behind Pizza Hut

FRESH FLOWERS

Buy 1 dozen
LONG STEM ROSES
at regular \$14.95/doz. price
before 12 noon Thurs & Fri and
GET 1 DOZEN FREE!

OR
LONG STEM ROSES
reg. \$14.95/doz with ad \$11.95/doz.

SWEETHEART ROSES
reg. \$9.95/doz with ad \$7.95/doz.

ALSTROMERIA
reg. \$9.00/bunch with ad \$5.95/bunch

6" Colorful PEPPER PLANTS
reg. \$7.50 NOW \$2.95

perfect for sunny dorm rooms

25% off all Indoor Plants
regular price (with ad)

UNIQUE FLORAL DESIGNS
for all occasions

we wire worldwide

good through Tues. Sept. 29

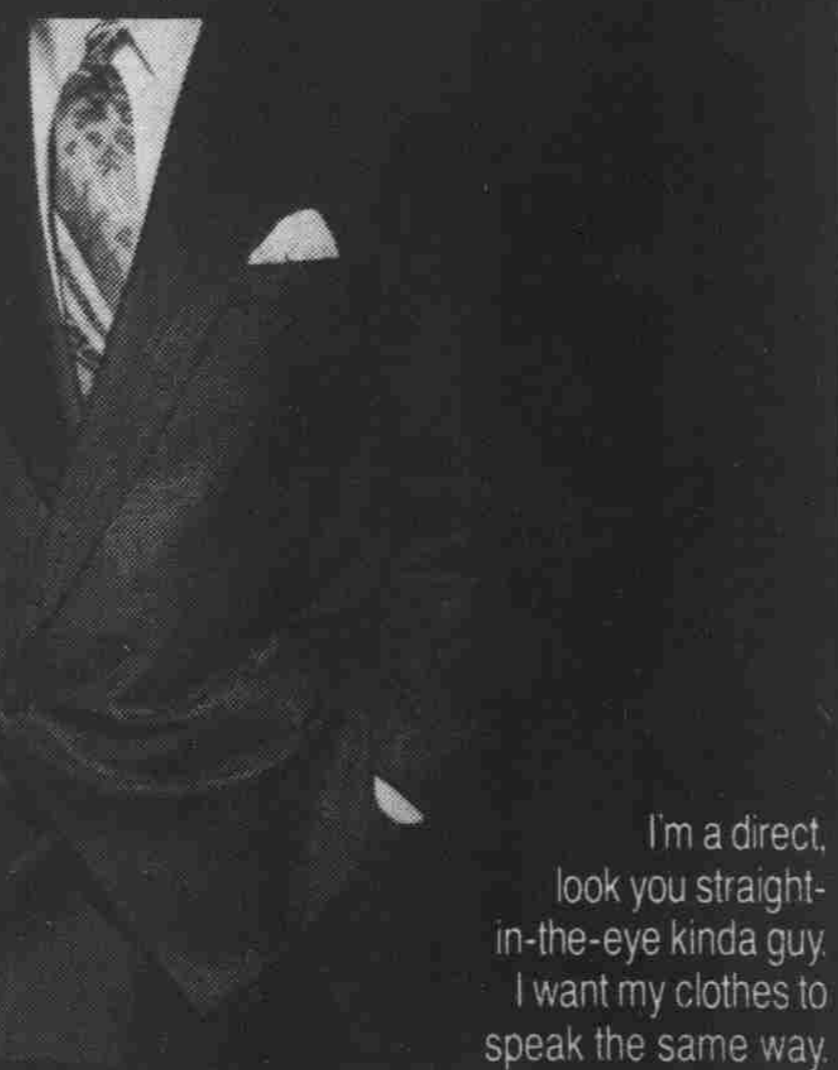
All locations open every Sunday

Eastgate Shopping Center
North A. Squires Plaza
Cedar Hill
967-8568 • 688-4540

Our Greenhouse Location
Northgate Mall, Chapel Hill
489-3892
11 S. 8th St., Durham

The Potted Plant

VIEWER PARTICIPATION REQUESTED.



I'm a direct, look you straight-in-the-eye kinda guy. I want my clothes to speak the same way.

THE HUB LTD

Crabtree Valley Mall, Raleigh
North Ridge Shopping Center, North Raleigh
103 East Franklin St., Chapel Hill
Northgate Mall, Durham Open Nov. '87

DRESS FOR SUCCESS.



SOPHOMORES

If you're enrolled in the second year of a college program leading to an associate or baccalaureate degree from an accredited college/university, you could be earning more than \$1,000 a month during your junior and senior years of college for a total of \$24,000 by graduation. You must be at least 18 but not more than 25 years old, be a US Citizen and have a 3.0 GPA. To see if you qualify for the Baccalaureate Degree Commissioning Program (BDPCP). Call: 1-800-662-7231/7419 or outside of North Carolina 1-800-528-8713.

CONTACT: Lt. Baetzel
Navy Representative
September 29
Career Planning and Placement Office

NAVY OFFICER.

LEAD THE ADVENTURE.

CAROLINA Union
FILM COMMITTEE presents
CITIZEN KANE
Thurs., Sept. 24
7:00 & 9:30
A ROOM WITH A VIEW
Friday, Sept. 25
7:00 & 9:30
Admission \$1.50
EASY RIDER
Fri & Sat, Sept. 25 & 26
Midnight
Admission \$1.00
SALVADOR
Sat., Sept. 26
7:00 & 9:30
Admission \$1.00
Tickets at Union Desk

CINEPLEX ODEON AND PLITT THEATRES

NOWAY OUT
KEVIN COSTNER
GENE HACKMAN
FRIDAY AT 7:15-9:30
SATURDAY & SUNDAY
2:15 • 4:45
7:15 • 9:30
CAROLINA
401 FARMHOLD STREET
DURHAM

THE LIVING DAYLIGHTS
The new James Bond...
FRIDAY AT 7:00-9:45
SATURDAY & SUNDAY
2:00 • 4:30
7:00 • 9:45
CAROLINA
401 FARMHOLD STREET
DURHAM