

Women's soccer off on right foot; freshmen lead the way

By SCOTT GOLD
Staff Writer

What happens when a national champion loses two All-Americans, *Soccer America's* Most Valuable Player and three more significant contributors? It gets better.

Wendy Gebauer is gone, taking her tact, nerves and organization with her. Birthe Hegstad left too, her magical, quicker-than-the-eye-can-see feet trailing behind her. Powerful Lori Henry, the anchor of last year's defense. Anne Sherow. Andrea Zemen. Donna Rigley. All gone.

Together they totaled 137 goals, 81 assists and three national championships.

An outsider wouldn't have ever known the difference.

North Carolina unleashed this year's version of that championship team this weekend, crushing Hardin-Simmons 9-1 on Saturday, and then tanning Southern Methodist University 5-1 on Sunday.

"We were pleased with the victories," coach Anson Dorrance said. "I'm really excited about this team."

"It's very explosive and has a lot of good dimensions — good team quickness and an excellent tactical framework. I think the chemistry is outstanding."

There are probably two main reasons that North Carolina is not suffering the consequences of losses that would cripple any other team in the nation: the amazing crop of freshman the UNC imported over the summer — enough to rejuvenate any team — and

the exhilarating return of midfielder Tracy Bates, out all of last year with injuries.

North Carolina started off the season well in Saturday's opener, obliterating an early 1-0 Hardin-Simmons lead with the helping hand of rookie Mia Hamm's hat trick.

Senior Shannon Higgins tied the game at one with a 15-yarder just after the seven-minute mark.

"It was an excellent opening," Higgins said. "We had drawbacks with the heat (102 degrees on Sunday), but I think everybody did an excellent job. The freshman really contributed well, and everyone coming off the bench did a fantastic job. The team is more together this year."

Hamm scored the first of three goals at 30:22 on an assist from senior Ava Hyatt, powering in a shot from directly in front of the goal. Hamm also scored on a breakaway at 62:02 and rebounded a deflection off the post at 64:19.

Freshman Kristine Lilly also provided an immediate impact on the Tar Heels by knocking in the tie-breaking goal as well as assisting Hamm's final tally.

UNC's other goals were scored by Werden, junior Pam Kalinoski and sophomore Louellen Poore.

Bates, an All-American in 1986 and 1987 and a member of the U.S. National Team, was out all of last year with an injured foot, and Saturday marked a long-awaited and a triumphant return for the tiny midfielder.

"I did alright," she said. "I've played better, but it was a good start. I can't tell

you what a fantastic feeling it was just to be out there again, though."

In Sunday's championship match, North Carolina easily handled the 19th-ranked team in the country, jumping out to an early 2-0 lead in the first half that they never relinquished.

Lilly once again provided the crucial goal of the game, in this case the first one, on an assist by Kalinoski. She also provided the assist on UNC's final tally.

The game was essentially settled at the 20:10 mark, when Higgins booted a

penalty kick into the corner of the goal to make it 2-0.

"That's easily the best team in the land," SMU coach Alan Kirkup said. "We came out a little mesmerized by North Carolina, and that penalty decision was a dubious call. Being down 2-0 just like that made us struggle."

Two quick goals by Kalinoski before the half drained the Mustangs of their last breath of upset, and the Tar Heels were on their way to another easy

ride. Julie Guarnotta provided UNC with their fifth and final tally.

In men's action this weekend, the seventh-ranked squad opened their 1989 season under new head coach Elmar Bolowich with a disappointing upset loss to Hartwick in the first game of the Demon Deacon Weekend Challenge. Attempting to recover and restart the season, the team took out all of their early frustrations on an outclassed Texas Christian team, winning 3-1 on Sunday in Winston-Salem.

All three goals were scored by junior forward Derek Missimo, who helped the Tar Heels overcome an early 1-0 Horned Frog lead.

North Carolina had plenty of opportunities, firing 23 shots in the game, while limiting TCU, 0-2, to only five.

"We were a lot better prepared (in the second match)," Bolowich said. "We put forth the effort necessary to win. We played more aggressive today than against Hartwick."

from page 6

Hockey

we can talk a little more and we need to get more as a team. Other than that, I think we did great."

The Tar Heels did play mostly without error, the exceptions coming at the beginning and the end. The alumnae drew first blood early after a UNC penalty corner failed. Two-time first-team All-American Maryellen Falcone, UNC's fourth-leading scorer and an '87 graduate, got around the left side of the UNC defense and fired a shot over the glove of Spee into the back corner of the net.

The alumnae — who were coached by UNC lacrosse mentor Willie Scroggs and played on the lighter side, using a male goalkeeper in the first half and often sneaking in an illegal 12th player — had several opportunities to add to their lead in the first half.

Midway through the first half, an alumnae penalty corner almost made it 2-0. After '89 grad Jennifer Anderson hit the ball in and Lori Brune stopped it, Gillespie fired a shot to Spee's right. The native of Rotterdam, The Netherlands, deflected it with her foot and then glove-saved a follow while on the ground.

Both teams had limited first-half scoring bids, but the second half was a different story. Each squad recorded four penalty corners in the second stanza, with the Tar Heels converting on one.

The alumnae followed up on their late goal in regulation and almost won the game three minutes into the overtime period. After a penalty corner shot by '87 alumna Claire Dougherty and save by Spee, the loose ball came right

to the stick of the alumnae's Kim Knickerbocker Gey. But Gey, a zoology major who now attends nursing school, whiffed in front of the net to give UNC new life.

The overtime period was uneventful with the exception of Anthon's score. Lempers took a hit-in from the right side that met with the streaking Anthon, who hit the ball into the left side of the goal.

Although the loss was disheartening to the alumnae, many were just glad to be in Chapel Hill again.

"It feels great to be back and to see everybody again," Anderson said. "They look really good."

Since this was the first true game experience the Tar Heels have had, Shelton thought it was important to see what needs to be done to improve.

"We're young and we're learning with every game," Shelton said. "This was very good for us because it's probably one of the more competitive games we'll play all season."

After a scrimmage Wednesday at Duke, the Tar Heels open the regular season in Philadelphia with games against Villanova and Temple this weekend.

Watch for the DTH Football Section on Friday

Bike to Campus
Your Own Apartment. Now You Can Afford It.

And Enjoy Our Resort Clubhouse

Estes Park 967-2234
University Lake 968-3983
Royal Park 967-2239
Kingswood 967-2231
UNC
Triangle Communities
THE APARTMENT PEOPLE
Mon.-Fri. 9-6; Sat. 10-5

EQUAL HOUSING OPPORTUNITY

Get A Fantastic Job!

The UNC PHONATHON is now hiring. We're looking for articulate, outgoing, true blue Tarheels who want to have a great time raising money for academic programs while starting at \$4 per hour. 7-21 Hours per week/Real Resume Beef.

CALL 962-7014
or stop by the Porthole Bldg. in the alley next to NCNB.

TAR HEEL SPORTS SHORTS

WEDNESDAY
MEN'S SOCCER
VS.
CATAWBA COLLEGE
4:00
FINLEY FIELD
Hardee's

FREE Backpack
when you buy an HP calculator!

HEWLETT PACKARD CALCULATORS

For Business
HP-14B\$59.95
HP-17B\$78.95
HP-19B\$124.95

For Science and Engineering
HP-22S\$49.95
HP-27S\$78.95
HP-28S\$167.95
HP-32S (replaces 11C)\$55.95
HP-42S (replaces 15C)\$86.95
*HP-41CV\$124.95
*HP-41CX\$177.95

*Free backpack offer not applicable to HP-41

We carry a full line of HP products.
PHONE ORDERS: MasterCard/VISA accepted. Call 1-800-334-0095.
MAIL ORDERS: Send a money order, certified check or business/personal check (bus./per. checks take 10 days to clear). Enclose your street address for UPS shipping and if different, your P.O. Box for paid invoice. Mail to Surveyors Supply Co., P.O. Box 809, Apex, N.C. 27502.
SHIPPING: \$5.00 shipping charge per order. Please add 5% tax. Sales are final. Defects are replaced free for 30 days. Cash and charge orders are shipped on the same or the next working day.

SURVEYORS SUPPLY CO.
Hwy. 64 at Salem St. • Apex, N.C. 27502 • 1-800-334-0095

Savings To Match Your Calling Patterns.

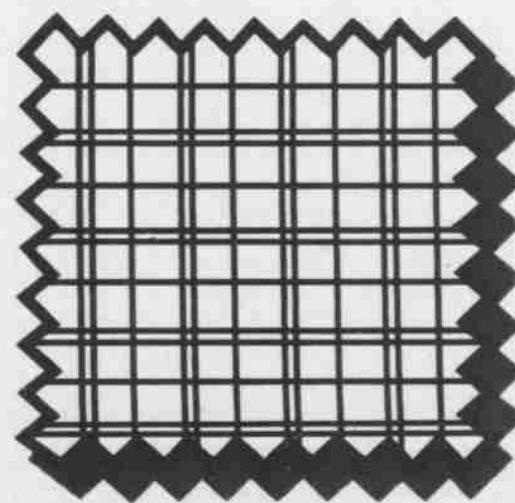


MetroPlusSM Service
Call Farther For Less.

Spend a lot of time on the phone calling other cities in the Triangle area? This service could mean big savings. For one set monthly rate, you get unlimited long distance calling to one or more cities in the Triangle area.

For example, if you live in Raleigh you can call Chapel Hill and talk as much as you like for \$12.00 a month. Call Creedmoor and Durham for \$14.00 a month. Or call all three cities for \$16.00 a month. You don't even have to dial "1" before the number.

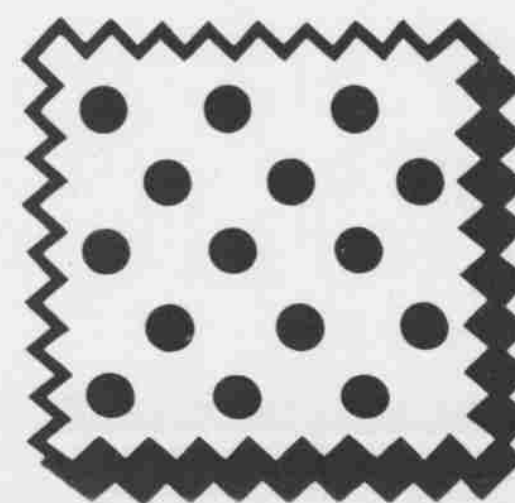
Callers from Cary and Chapel Hill can take advantage of similar savings.



MetroDiscountSM Service
Save 50% With Option One.

If most of your calls are short and you often call at night or on weekends, MetroDiscount Service Option One may offer the most advantages.

With this plan, you pay \$3.00 a month, and all your calls including calls made using your calling card, to Cary, Chapel Hill, Creedmoor, Durham, Hillsborough and Raleigh are 50% less any time you call.*



MetroDiscountSM Service
25¢ Calls With Option Two.

If you usually call during the day or tend to talk longer, MetroDiscount Service Option Two could offer the best value for people who make an average number of calls.

You pay \$4.50 a month and then 25¢ for each long distance call including calls made using your calling card, to Cary, Chapel Hill, Creedmoor, Durham, Hillsborough and Raleigh. You can call any time, to any long distance number in those cities and talk as long as you like.*

*Normal calling card service charges apply.

The MetroConnectionSM Plan Lets You Call Other Cities In The Triangle For Less.

With Southern Bell's new MetroConnection Plan, calling nearby cities can be easier and more economical, especially for those who call often or would like to talk longer.

The MetroConnection Plan lets you choose any option described above with free installation. Similar plans are available for business customers.

You can change to another option or back to your present service once at no charge during the 18-month trial period.

Watch the mail for more details to help you choose the plan that fits you best. Or call today, 780-2355.



A BELL SOUTH COMPANY