

SATISFACTORY DAY SAYS CLEMENCEAU

Advices Show on Whole Germans Suffered Check

A SLIGHT CENTER GAIN

London Praises Fine Resistance Put Up by the French Forces

WAS FULLY EXPECTED

Was Thought German Attack Would Come Between Noyon and Montdidier, Thrust For Paris

Paris, June 10.—"It was a perfectly satisfactory day," said Premier Clemenceau, last night. In these words the French leader accurately summed up the prevailing impression.

Latest advices from the battlefront show that on the whole the enemy clearly suffered a check on the day's operations. The enemy gained a slight advantage in the center on a front of three and three-quarter miles—about a fourth of the entire line of attack. On the wings he was stopped with such losses that five divisions have been put out of commission, or about one-third of the divisions identified up to the present as having taken part in the attack. This was done without the French reserves being called on.

The Germans had to bring up their troops at the last moment in order to avoid giving alarm to the allies. As the columns arrived they were compelled to deploy from the column of march into the line of attack. This operation, which takes some hours, exposes the men to an unpleasant artillery fire unless the element of surprise is preserved.

The German attacking troops had to envelop the heights of Bocages and Riquebourg dominating the Matz valley offered a splendid target to the French gunners. The enemy had to throw in division after division before he was able to drive his way forward to Reponses-Sur-Matz and Marsull along the Roye road, which was swept by French fire.

Reponses-Sur-Matz is a central position, from which the enemy can direct attacks southward to Estrees-St. Denis or southeast to Compiègne. He is being strongly counter attacked, however, and will only be able to develop his advantage at heavy cost, if at all.

Henry Bidou, military critic, says: "Let us be wary at the beginning of an important offensive of forming judgments, but without prejudicing the future it is difficult to be satisfied with the first day."

The feeling which fairly represented the general sentiment expressed by L'Œuvre in the caption, "This time we have not been 'surprised' but perhaps the boches will be."

Splendid Resistance.

London, June 10.—The French troops appear to be putting up a splendid resistance to the Germans on the Noyon sector, especially on the two flanks of the attacking front, where the heaviest fighting continues. The Germans have made some progress in the center, where they claim the capture of the heights of Gury, while the French admit the loss of the villages of Reponses-Sur-Matz and Marsull.

It was generally expected that the German attack would come between Noyon and Montdidier, thus seemingly resuming the direct thrust for Paris.

Simultaneously with the bombardment on the Noyon sector the British front was subjected to a heavy fire, including gas shells, which seemed to herald another attack. According to latest accounts no infantry attempt delivered against the British lines.

There is little news yet from the German side, as the German official statement issued Sunday afternoon referred only to the operations of Saturday.

Travelers' Protective Association

St. Louis, June 10.—A war program has been prepared for the annual national convention of the Travelers' Protective association, which convened here this morning, to be in session until Friday. The customary elaborate social program has been abandoned by those in charge of the gathering and the time will be devoted to the transaction of the business affairs of the organization and the consideration of ways and means in which its members may best aid the nation in war. The annual reports to be presented by the several officers and committees show the association to be in a prosperous condition, with a gratifying increase in membership during the past year.

To Be Tried For Disloyalty

St. Louis, June 10.—Dr. Charles Weinsberg, who was president of the Missouri branch of the German-American alliance until its recent disbandment, is to be brought for trial in the United States district court here this week under an indictment charging him with disloyalty. The indictment was based on a recent interview with Dr. Weinsberg published in a St. Louis newspaper.

Commencement at Wofford.

Spartanburg, S. C., June 10.—The annual commencement of Wofford college concluded today with the graduation exercises. Dr. Charles Forster Smith, of the University of Wisconsin, delivered the address before the graduating class.

BASEBALL

YESTERDAY'S RESULTS.

American League.
Chicago 3, Philadelphia 1.
St. Louis 5, New York 4.
Detroit 0, Washington 2.
Cleveland 0, Boston 2.

National League.
No games scheduled.

American Association.
Louisville 6, Milwaukee 2.
Toledo 0, Minneapolis 6.
Indianapolis 2, Kansas City 2 (called on 12th account Sunday saw).
Columbus 6, St. Paul 5.

Southern Association.
Chattanooga 5, Atlanta 1.
New Orleans 5, Mobile 1.
Nashville 1-4, Birmingham 7-2 (second game, seven innings).
Little Rock 10-0, Memphis 1-6.

International League.
Baltimore 2, Newark 2.
Binghamton 2, Jersey City 0.
Buffalo 5, Syracuse 3.

WHERE THEY PLAY TODAY.

American League.
Boston at Chicago.
Washington at St. Louis.
Philadelphia at Detroit.

National League.
Chicago at Philadelphia.
St. Louis at New York.
Pittsburgh at Brooklyn.
Cincinnati at Boston.

STANDING OF THE CLUBS.

American League

Won.	Lost.	Pct.
Boston	29	.604
New York	27	.587
Chicago	23	.561
St. Louis	21	.512
Cleveland	25	.510
Washington	22	.458
Philadelphia	17	.395
Detroit	14	.350

National League.

Won.	Lost.	Pct.
Chicago	20	12 .707
New York	29	14 .674
Cincinnati	23	22 .511
Pittsburgh	19	22 .463
Boston	19	24 .442
St. Louis	18	25 .419
Brooklyn	16	28 .364

COMPROMISE NEVER CAN BE CONSIDERED

(Continued from Page One.)

because he anticipated that the renewal of that method of warfare would in all probability bring the United States into the war.

"How well the ambassador knew the character of his government and how perfectly frank he was. He asked for the information without apology or indirection. The very bluntness of his message shows he was sure his superiors would not take offense at the assumption that their word was valueless and had only been given to gain time, and that when an increase of Germany's submarine fleet warranted the promise that would be broken without hesitation or compunction.

"In view of this spirit of hypocrisy and had faith manifesting an entire lack of conscience, we ought not to be astonished that the Berlin foreign office never permitted a promise or a treaty engagement to stand in the way of a course of action which the German government deemed expedient."

"The causes of the war," Mr. Lansing said, "were simply the German desire for world dominion."

"That was and is the central thought of Prussianism," he said. "It excited the cupidity of the governing and wealthy classes of the empire; it dazzled with its anticipated glories and by its promise of a boasted racial superiority the German millions who were to be instruments of achievement. With a devotion and zeal worthy of a better cause, they turned their energy into those channels which would aid the ruling class."

"We must go on with the war. There is no other way. This task must not be left half done. We must not transmit to posterity a legacy of blood and misery. We may in this great conflict go down into the valley of shadows because our foe is powerful and injured to war. We must be prepared to meet disappointment and temporary reverses, but we must go forward until this war is won."

LUMINA

Motion Pictures

Every Night Except Sunday

Tonight's Bill

LAW AND ORDER

Thrilling Vitagraph Drama

"The Onion Magnate's Revenge"

Ham and Bud in Their Latest Comedy

DANCING

Claude Elam's Orchestra

DAILY BETWEEN BUFFALO & CLEVELAND

3 MAGNIFICENT STEAMERS 3

The Great Ship "SEANDBEE" - "CITY OF ERIE" - "CITY OF BUFFALO"

Leave Buffalo 9:00 P.M. U.S. Eastern Time - Leave Cleveland 9:00 P.M. U.S. Central Time - Arrive Buffalo 7:00 A.M. U.S. Eastern Time - Arrive Cleveland 7:10 A.M. U.S. Eastern Time

Connections at Cleveland for Cedar Point, Put-in-Bay, Detroit and other points. Railroad tickets reading between Buffalo and Cleveland are good for transportation on our steamers. Ask your ticket agent or American Express agent for tickets via C. & B. Line. New Tourist Automobile Rates - \$7.50 Round Trip, with 3 days return limit, for cars not exceeding 177 lb. in weight. A beautifully colored sectional passage chart of The Great Ship "SEANDBEE" sent on receipt of five cents. Also ask for our 24-page pictorial and descriptive booklet free.

The Cleveland & Buffalo Transit Company - Cleveland, Ohio

"SEANDBEE" - the largest and most costly passenger steamer ever on the waters of the world. Sleeping capacity, 1500 passengers.

FARE \$4.03

Theatres

REAL VAUDEVILLE TALENT.

Nat Ferber's American Beauty company is one of the first companies to present real vaudeville talent in popular priced tabloid comedies, and this year they have an array that will appeal to discriminating audiences, opening this afternoon with matinee.

A large array of special scenery, gorgeous wardrobe from one of the big Broadway musical comedy successes, and a line of new script bills that will undoubtedly appeal to Royal patrons, are some of the attractions offered.

Among the big specialty acts that will be presented during the week will be Barkham and Barkham, the dancing marvels; Hillary and Schral, in black and white; by the way, a Broadway vaudeville skit lasting about 10 minutes; Yeager and Ramsey, two nifty singing and dancing sisters who will charm everyone, and Yvonne LaGrange in modern society and Broadway dances.

"MAGDA" AT THE GRAND.

"Magda," the new select release in which Clara Kimball Young achieves a distinct triumph, is the story of a young girl unkindly thrust into the world by an overbearing and dictatorial father, how she works out her own salvation and in the end wins to peace and happiness. As an offering on the legitimate boards, "Magda" ranks almost as a classic and the screen production in which Miss Young will be seen today and tomorrow at the Grand theatre is a finished piece of picture art, well calculated to please the most capricious critic.

As an emotional role Magda provides the star with a powerful vehicle. The play is intensely dramatic, founded on the struggle of the daughter to maintain her individuality in opposition to her father's wishes, and its incidents move along smoothly to the big final scene when fate intervenes for the harried girl.

ANOTHER SHIP IS VICTIM OF U-BOAT

(Continued from Page One.)

pose looking to the ultimately decisive object of the whole campaign was of another kind. But after the first couple days of a success which must have been beyond their expectations they may well have hoped and they must still hope, to come near enough to the capital to bring Paris under the fire of their heavy guns. As they have not succeeded in this, they are likely to turn their next attention elsewhere without by any means giving up the thought of renewing the threat to Paris at a later phase of those alternating movements.

"We must not think too exclusively of Paris or of Amiens or of the channel ports any more than of Rheims or Verdun. Alternation operations on any of these sectors may be equally serviceable to the final purpose of the

Women Prepare!

Thousands of women in the South have overcome their sufferings, and have been cured of woman's ills by Dr. Pierce's Favorite Prescription. This temperance medicine, though started nearly half a century ago, sells most widely today. It can now be had in tablet form as well as liquid, and every woman who suffers from backache, headache, nervousness, should take this "Prescription" of Dr. Pierce's. It is prepared from nature's roots and herbs and does not contain a particle of alcohol or any narcotic. It's not a secret prescription for its ingredients are printed on wrapper. Send 10c. for trial package to Dr. V. M. Pierce, Buffalo, N. Y.

CLARA KIMBALL YOUNG

"MAGDA"

By Herman Suderman

Matinee, 15c Night, 25c

C&B DAILY BETWEEN BUFFALO & CLEVELAND

3 MAGNIFICENT STEAMERS 3

The Great Ship "SEANDBEE" - "CITY OF ERIE" - "CITY OF BUFFALO"

Leave Buffalo 9:00 P.M. U.S. Eastern Time - Leave Cleveland 9:00 P.M. U.S. Central Time - Arrive Buffalo 7:00 A.M. U.S. Eastern Time - Arrive Cleveland 7:10 A.M. U.S. Eastern Time

Connections at Cleveland for Cedar Point, Put-in-Bay, Detroit and other points. Railroad tickets reading between Buffalo and Cleveland are good for transportation on our steamers. Ask your ticket agent or American Express agent for tickets via C. & B. Line. New Tourist Automobile Rates - \$7.50 Round Trip, with 3 days return limit, for cars not exceeding 177 lb. in weight. A beautifully colored sectional passage chart of The Great Ship "SEANDBEE" sent on receipt of five cents. Also ask for our 24-page pictorial and descriptive booklet free.

The Cleveland & Buffalo Transit Company - Cleveland, Ohio

"SEANDBEE" - the largest and most costly passenger steamer ever on the waters of the world. Sleeping capacity, 1500 passengers.

FARE \$4.03

German plan. Chess has often been compared with war, but it never offered a more exact and vital analogy than now. The campaign is the supreme play of all the German forces against all the allied forces.

SLOW PROGRESS IS MADE BY BOCHES AT AN ENORMOUS COST

(Continued from Page One.)

ating north of Chateau Thierry repulsed German attacks last night and made new progress.

A German attempt to assault the British positions at Aveluy wood, north of Albert, was repulsed, while a British raid near Bethune, northwest of Lens, was successful.

Whether the Germans are attacking here in as great or greater strength than against the Chemin Des Dames on May 27 is not yet clear. If the tactical advantage gained by the advance on the Noyon-Rheims front is to be realized to the full, the salient there must be widened toward the west. The Germans failed before the forest of Villers-Cotterets. The Montdidier-Noyon sector offered a favorable opportunity and the German command evidently lost no time in massing troops for the attack. The heavy preliminary bombardment of high explosive and gas shells covered not only the 22 miles under attack, but also the American sector west of Montdidier and the British front north and south of the Somme directly east of Americans. However, no infantry attacks yet have developed on these fronts. The enemy artillery fire affected the allied line to a depth of six miles.

On the Noyon-Rheims salient the only fighting has been some local German attacks northwest of Chateau Thierry, which were checked by the American and French troops, and an unfruitful German effort west of Rheims. The Americans inflicted heavy losses on the enemy in his effort on the Chateau Thierry sector. Elsewhere on the American, French and British sectors, there has been no activity of moment.

Increased artillery fire on the mountain front in northern Italy is reported. Infantry activity, however, has been confined to small local attacks. It is known that the Austro-Hungarian command has been making great preparations for an offensive but the blow is held in abeyance.

German plan. Chess has often been compared with war, but it never offered a more exact and vital analogy than now. The campaign is the supreme play of all the German forces against all the allied forces.

SLOW PROGRESS IS MADE BY BOCHES AT AN ENORMOUS COST

(Continued from Page One.)

German plan. Chess has often been compared with war, but it never offered a more exact and vital analogy than now. The campaign is the supreme play of all the German forces against all the allied forces.

SLOW PROGRESS IS MADE BY BOCHES AT AN ENORMOUS COST

(Continued from Page One.)

C&B DAILY BETWEEN BUFFALO & CLEVELAND

3 MAGNIFICENT STEAMERS 3

The Great Ship "SEANDBEE" - "CITY OF ERIE" - "CITY OF BUFFALO"

Leave Buffalo 9:00 P.M. U.S. Eastern Time - Leave Cleveland 9:00 P.M. U.S. Central Time - Arrive Buffalo 7:00 A.M. U.S. Eastern Time - Arrive Cleveland 7:10 A.M. U.S. Eastern Time

Connections at Cleveland for Cedar Point, Put-in-Bay, Detroit and other points. Railroad tickets reading between Buffalo and Cleveland are good for transportation on our steamers. Ask your ticket agent or American Express agent for tickets via C. & B. Line. New Tourist Automobile Rates - \$7.50 Round Trip, with 3 days return limit, for cars not exceeding 177 lb. in weight. A beautifully colored sectional passage chart of The Great Ship "SEANDBEE" sent on receipt of five cents. Also ask for our 24-page pictorial and descriptive booklet free.

The Cleveland & Buffalo Transit Company - Cleveland, Ohio

"SEANDBEE" - the largest and most costly passenger steamer ever on the waters of the world. Sleeping capacity, 1500 passengers.

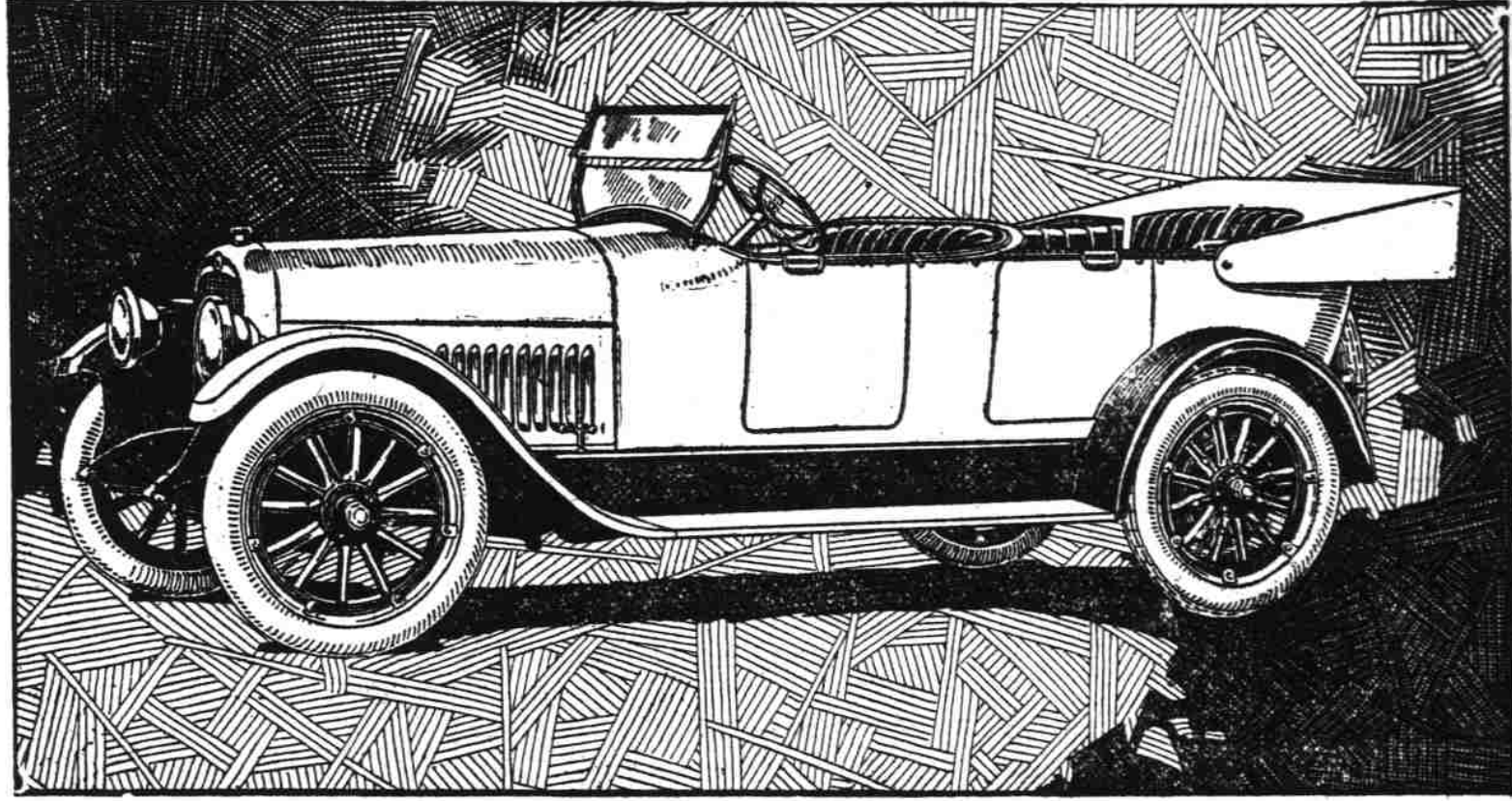
FARE \$4.03

The Opportunity Of a Lifetime Is Now!

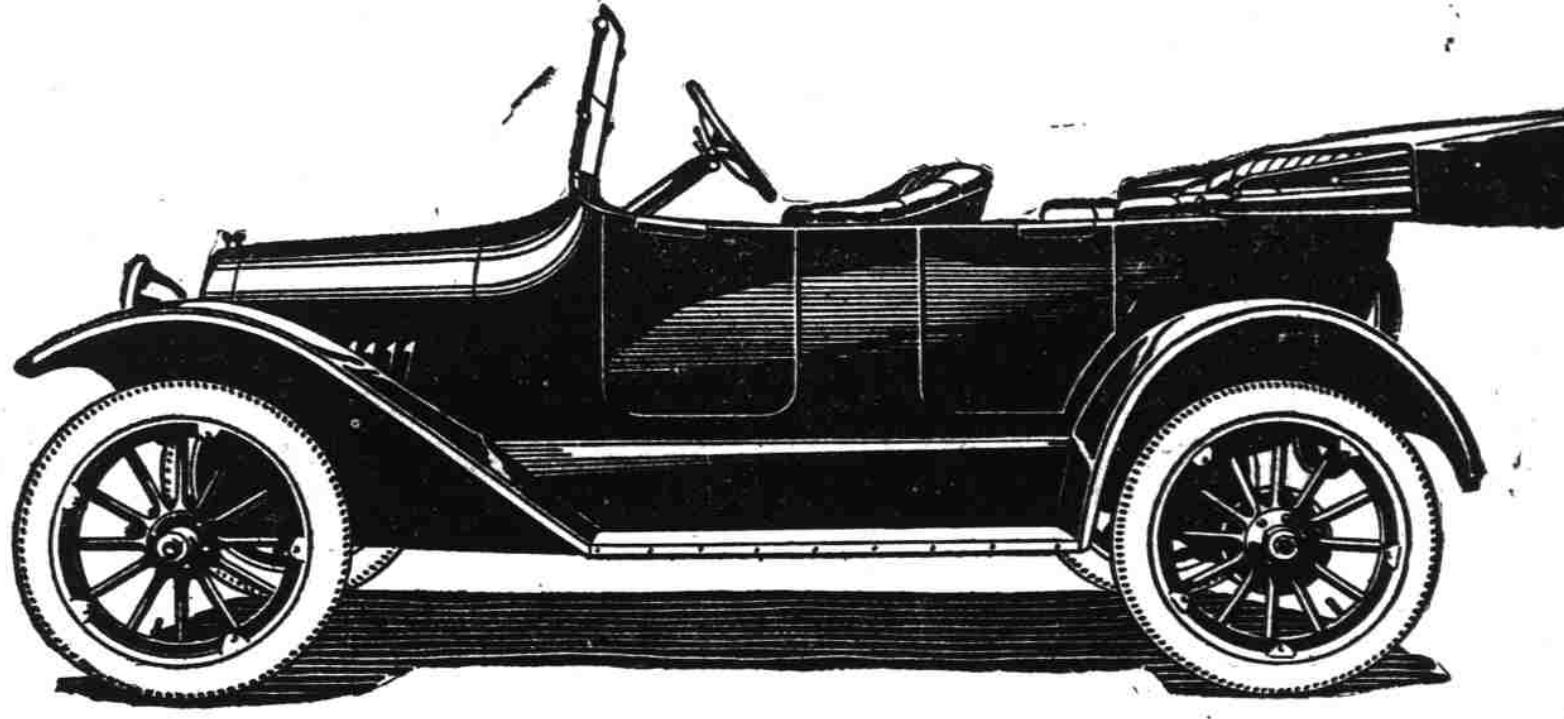
THE NEW ERA CAMPAIGN

OF THE WILMINGTON DISPATCH

Offers to the young ladies outside of Wilmington valuable awards for just display of effort.



First Grand Capital Award: Studebaker Six, value \$1,507.50, purchased from Clayton & Lassiter, 111 Chestnut St., Wilmington, N. C.



Second Grand Capital Award: Chevrolet five-passenger Touring Car, Model 495, value \$745.00, purchased from Clayton & Lassiter, 111 Chestnut St., Wilmington, N. C.

Territory That Campaign Embraces Has Been Divided Into Two Divisions As Follows

DIVISION "A"
Comprises all of the following counties: New Hanover (outside corporate limits of Wilmington), Cumberland, Duplin, Onslow, Pender, Jones, Sampson and Wayne.

Awards For This Division

First Award: Victor Victrola, cabinet size, value \$215.00, purchased from Wilmington Talking Machine Company.

Second Award: Choice of any Sewing Machine, \$74.00 in value, purchased from Singer Manufacturing Company.

Third Award: 42-piece Chest of Silver, value \$45.00, purchased from A. O. Schuster.

Fourth Award: 26-piece Chest of Silver, value \$30.00, purchased from A. O. Schuster.

Fifth Award: Eastman Autographic Kodak, value \$27.50, purchased from North am's.

Sixth Award: Solid Gold Bracelet Watch, value \$25.00, purchased from A. O. Schuster.

All non-award receivers will receive 5 per cent for collections on subscriptions.

DIVISION "B"
Comprises the following counties of North Carolina: Brunswick, Bladen, Columbus, Robeson and Scotland; and all points in South Carolina within a radius of 100 miles of Wilmington.

Awards For This Division

First Award: Victor Victrola, cabinet size, value \$215.00, purchased from Wilmington Talking Machine Company.

Second Award: Choice of any Sewing Machine, \$74.00 in value, purchased from Singer Manufacturing Company.

Third Award: 42-piece Chest of Silver, value \$45.00, purchased from A. O. Schuster.

Fifth Award: 26-piece Chest of Silver, value \$30.00, purchased from A. O. Schuster.

Fifth Award: Eastman Autographic Kodak, value \$27.50, purchased from North am's.

Sixth Award: Solid Gold Bracelet Watch, value \$25.00, purchased from A. O. Schuster.

All non-award receivers will receive 5 per cent for collections on subscriptions.

250,000 EXTRA VOTES

IN ADDITION TO REGULAR VOTES—For each club of \$25 in new or renewal subscriptions to The Wilmington Dispatch. Offer begins Monday, June 10th, and good until Saturday, June 22nd. The most liberal special vote offer of the entire campaign. Time for real action has now arrived. Notice and clip coupon from The Dispatch today.

Campaign Department Wilmington Dispatch

Telephone Number 219