

## BULLDOZING

WORK OF ALL KINDS

Call 32 or See

Wayne Smith

Route 1, Franklin

### Demonstration Club Meetings For Week Are Announced

Meetings of home demonstration clubs in the county for the coming week have been announced by Mrs. Florence S. Sherrill, county home demonstration agent. They are as follows:

Today (Thursday): Holly Springs club with Mrs. Donald Seagle as hostess at 1:30 p. m.; Higdonville club at 2 p. m. with Mrs. Bertie Suttle.

Friday: Mulberry club at the home of Mrs. Edward Carpenter at 2 p. m.

Monday: Sealy club with Mrs. Earl Dryman at 2 p. m.; Nanta-

hala club in the school lunchroom at 7:30 p. m.

Tuesday: Carson club at 2 p. m. at the community building.

Wednesday: Cartoogechaye club with Mrs. Cecil Parker at 2 p. m.

### Cunninghams On Trip To Visit Children And See The Country

Mr. and Mrs. J. F. Cunningham, who recently celebrated their 60th wedding anniversary, are off on a six weeks' trip to see the sights — and visit their children.

They left last week for Winston-Salem, where they will visit two sons, C. M. and H. R. Cunningham, and a daughter, Mrs. E. M. Davis, and their families. From Winston-Salem, they will go to Richmond, Va., to visit another



WITH A COUPLE of friends on Formosa is Airman 1/c Claude A. McFalls, of Franklin, Route 3. A petroleum supply specialist he is on temporary duty on the hotspot island stronghold for a mobility test conducted by the 51st Fighter Interceptor Wing.

daughter, Mrs. B. C. Boesser, and family. Next on their itinerary is Silver Springs, Md., to visit their granddaughter, Mrs. M. G. Welling, and her family.

While away, they plan to spend some time in Washington and at other interesting places.

### High Honors To Miss Nolen

Magna cum laude (with high honors) went with Miss Connaree Nolen's B. A. degree last week from Catawba College, it has been learned here.

Daughter of Mr. and Mrs. Charles W. Nolen, of Franklin, Route 1, she was an outstanding honor student at Catawba, was active in the YWCA, Phi Epsilon, the Major Club, Methodist group, was secretary of the Seymour Scientific Club, sports editor of The Pioneer, campus newspaper,

secretary-treasurer, manager, and president of the Women's Athletic Association, and a junior marshal.

She is listed in "Who's Who in American Colleges and Universities".

### This Week With Macon County Agents

By JAMES G. FLANAGAN (Assistant Agent)

In Macon County as well as in all parts of our state, there is a hidden agent working against profits in our livestock enterprises. Almost a half-billion dollars a year is lost as the result of in-

The Franklin Press and The Highlands Maconian  
THURSDAY, JUNE 9, 1955

ternal parasite infections in the U. S. While some deaths do occur because of parasite infections, more often the result is weakened, stunted, or unthrifty animals — the ones that don't "do well".

Unrecognized, parasites cause a type of drag that slows animals down, leads to waste of feed, labor and space. Also, animals lose their resistance to other disease attacks.

Controlled tests have shown there may be as much as 50 pounds difference between infested and non-infested six-months old calves. An estimate recently released by the United States Department of Agriculture, gives some measure of the cost of internal parasites; cattle losses were \$37,358,000, sheep, \$44,326,000; swine, \$276,726,000; and poultry \$46,320,000.

How do worm parasites develop? All worm parasites spend part of their life cycle outside the animal host. Let's look at the life cycles of a stomach worm: (1) mature female worms produce large numbers of eggs which pass out with the manure and are distributed on the pasture. (2) After a period of time on the pasture, larvae hatch from the eggs. (3) As the cattle graze, larvae are picked up and swallowed with the grass. (4) The larvae locates in the digestive tract of the animal and develops to maturity.

Some of the more outstanding signs of heavy parasite loads are, rough hair coat, coughing, stiff-gait, bloody or dark feces, scours, "pot-belly", lack of alertness, and failure to gain well. The more severe the infection the easier it is to recognize these symptoms. Younger stock is usually more susceptible to the losses than the older and more resistant animals.

For all cattle, except dairy cows producing milk for market, a two-way treating program is recommended. This consists of a dose of Phenothiazine twice a year. This removes most of the adult worms. These doses can be given in a number of ways, in a drench, bolus, or in a feed mixture.

The second and new phase of the program for cattle is to feed very small amounts of "pheno" per day, in minerals, feed or salt. This reduces the productivity of worms which may have survived the heavier dose of Phenothiazine, thus decreasing the number of worms on the pastures. This part of the program is known as low-level feeding.

Now for the recommended dosages of Phenothiazine for livestock: cattle — 20 grams per 100 pounds body weight, single dose not to exceed 60 grams; sheep — adult animals 25 grams, kids and lambs under 60 pounds 12½ grams; hogs — 1/10 gram per one pound body weight in the feed; chickens and turkeys — chickens ½ gram per bird and turkeys 1 gram per bird.

There are a few cautions: (1) do not treat dairy cows when producing market milk. (2) there is danger of losing an animal if over-dosed or dosed in a very weakened condition.

If you plan to use the low-level treatment along with the above recommendations there is now on the market a Pheno-salt block or Pheno-salt mixture.

In all treatments be sure to follow instructions of the manufacturer.

In dollar value, coffee is the leading agricultural commodity imported by the United States.

RECAPPING  
NEW TIRES  
RADIATOR REPAIRS  
RICKMAN'S  
O. K. RUBBER WELDERS  
AND RADIATOR SHOP

R. C. A.  
PHILCO  
AND  
EMERSON  
TV'S

See them at...

Franks Radio &  
Electric Co.  
Mack and J. D.

Phone 249 Franklin

Everybody



Is having their  
Tires Recapped  
Here

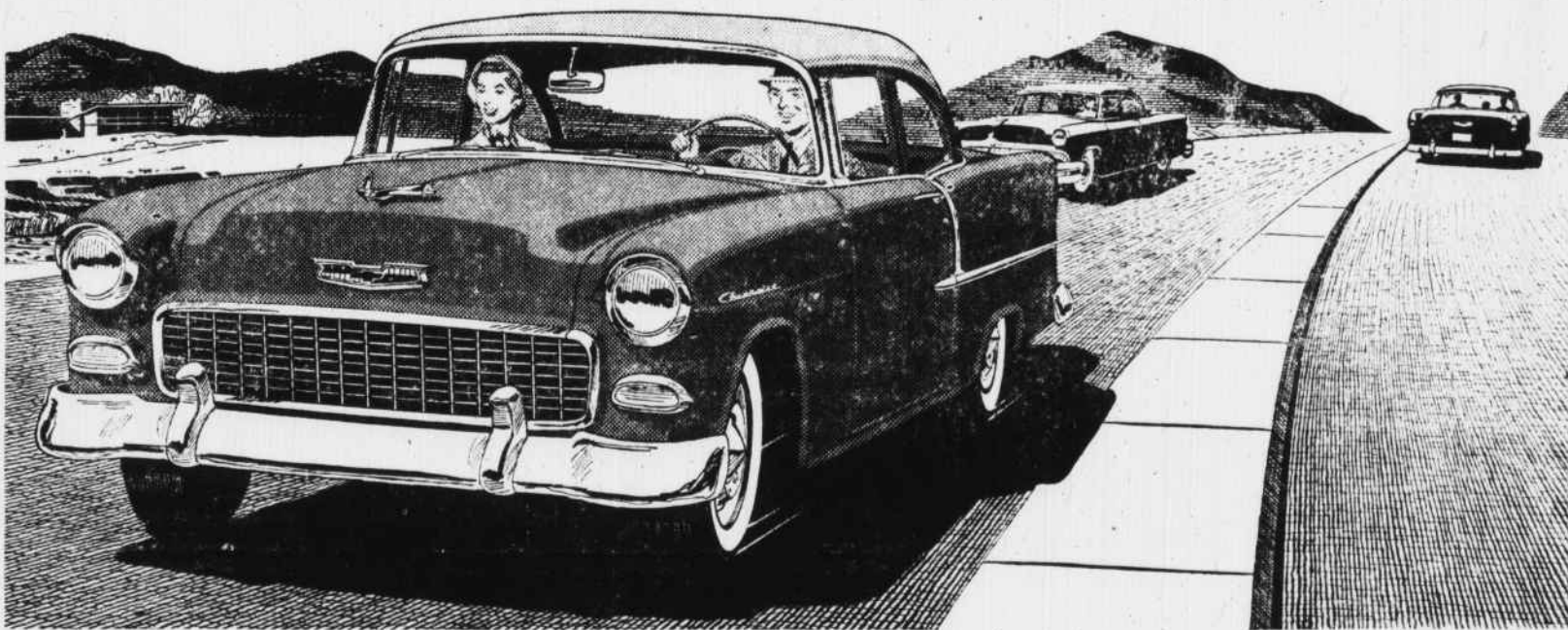
Also  
VULCANIZING

New LEE  
and GOODYEAR  
TIRES AND TUBES

Franklin Tire Shop  
C. D. Green C. H. Pennington  
East Main Street  
At Foot of Town Hill  
Phone 81-J

# Don't argue with this baby!

All Chevrolet's competitors and most of the high-priced cars tried it recently in official NASCAR\* trials—and took a licking!



Meet the champ! The new Chevrolet "Turbo-Fire V8" — the most modern V8 on the road today. Here's what happened—

Daytona Beach, NASCAR Acceleration Tests Over Measured Mile From Standing Start. Chevrolet captured the 4 top positions in its class! 8 of the first 11! And on a time basis Chevrolet beat every high-priced car, too—but one! But wait!—this is just the beginning!

Daytona Beach, NASCAR Straightaway Running. Open to cars delivered in Florida for \$2,500 or less. Chevrolet captured the first two places, 7 out of the first 11 places!

Daytona Beach, NASCAR 2-Way Straightaway Running Over Measured Mile. Open to cars from 250 to 299 cu. in. displacement. Chevrolet captured 3 of the first 5 places!

Columbia, S. C. NASCAR 100-Mile Race on half-mile track. Very tight turns. Chevrolet finished first!

Fayetteville, N. C. NASCAR Late Model Event. Chevrolet again finished first. Because of even tighter turns the driver chose to run the entire 150 laps in second gear! Yet no overheating or pit stops!

These facts you can't laugh off. Sales leader. Road leader. A crowning achievement of Chevrolet and General Motors. Try a Chevrolet... and live in a land of going-away where you win all the arguments! Soon, maybe?

\*National Association for Stock Car Auto Racing



Way, way ahead!

# Chevrolet

Sales leader for  
19 straight years!

## BURRELL MOTOR COMPANY, Inc.

PHONE 123

FRANKLIN, N. C.

You'll like the  
Special Flavor in



— it goes a long way toward making any meal better!

Fill Your Cup With Rich, Smooth Coffee Flavor



THE VALUABLE COUPON ON EVERY BAG CAN HELP YOU SAVE MONEY ON HOUSEHOLD ITEMS Write for completely illustrated catalog showing many valuable household articles. JFG Coffee Co. Knoxville.