



A&P's Own Pure Vegetable Shortening

dexo

Equal To The Best
Yet Costs You Less

1-Lb. Tin **31c** 3 Lb. Tin **83c**

"OUR FINEST" QUALITY" A&P

WHITE HOUSE DRY NON-FAT

Pineapple Juice 46-Oz. Can **23c** **Milk Solids** 1-Lb. Ctn. **23c**

SEE
YOUR

Savings **A&P**

GROW AND GROW!

WHEN
YOU SHOP AT A&P

Armour Treet Luncheon Meat	12-Oz. Can	35c
Armour's Star Beef Stew	16-Oz. Can	35c
Armour's Vienna Sausage	4-Oz. Can	17c
Armour's Corn Beef Hash	16-Oz. Can	29c
Armour's Star Roast Beef	12-Oz. Can	49c
Armour's Star Corned Beef	12-Oz. Can	47c
Armour's Fatted Meat	2 3/4-Oz. Cans	17c
Armour's Chopped Ham	12-Oz. Can	47c

Strietmann Cookies	Cocoa Nut Choc. Drops	1-Lb. Bag	47c
Sunshine Vanilla Wafers		12-Oz. Pkg.	31c
A&P Instant Coffee	2-Oz. Jar	6-Oz. Jar	49c \$1.29
Ann Page Mayonnaise		Qt. Jar	49c
Ann Page Gelatins		3 Pkgs.	20c

LIGHT MEAT TUNA

No. 1/2 6 1/2-Oz. Can **25c**

GREEN GIANT

Green Peas

No. 303 16-Oz. Can

19c



WHITE HOUSE EVAPORATED MILK

6 Can Carton **77c**

Bright Sail Bleach	Qt. Bot.	13c	1/2-Gal. Bot.	25c
20 Mule Team Borax			1-Lb. Box	19c
Boraxo Hand Soap			8-Oz. Tin	19c
Clorox Bleach	Qt. Bot.	17c	1/2-Gal. Bot.	31c
Flit Sprayers			Each	25c
Flit Fly Spray	Pt. Bot.	39c	Qt. Bot.	59c
Flit Bug Spray	Pt. Bot.	39c	Qt. Bot.	59c

Florient Room Deodorant -- Reg. Can **79c**

Delsey Toilet Tissue ----- 4 Rolls **49c**

Pard Dog Food ----- 2 1-Lb. Cans **27c**

Ajax Cleanser --- 2 Reg. Cans **23c** Gt. Can **15c**

Vel Liquid Detergent ----- 12-Oz. Can **39c**

Red Label
Karo Syrup
Pt. Bot. **23c**

Wesson Oil
Pt. Bot. **35c** Qt. Bot. **67c**

Shortening
Snowdrift
1-Lb. Can **33c** 3 Lb. Can **87c**

Kleenex Tissues
Box of 400 **25c**

Peanut Butter
Peter Pan
12-Oz. Glass. **39c** 18-Oz. Jar **55c**

HEINZ'S FOODS
Baked Beans 2 1-Lb. Cans **37c**
Spaghetti --- 15 1/2-Oz. Can **15c**
Macaroni --- 15 1/2-Oz. Can **19c**

JANE PARKER—BLUEBERRY OR

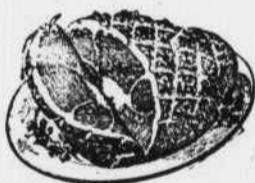
Peach Pies - Your Choice **49c**

Save on "Super-Right" Meats!

Armour's Star Smoked Short Shank Skinned
10-14-LB. AVG. — HALF OR WHOLE

HAMS

Per Lb. **49c**



SHANK PORTION Per Lb. **39c** **CENTER SLICES** Per Lb. **95c**

Cut Up "Super-Right"
FRESH FRYERS, lb. . . . 39c

"SUPER-RIGHT" ALL MEAT

Franks 1-Lb. Pkg. **39c**

"Super-Right" Sliced Boneless Cooked
Ham - - 8-oz. Pkg. **69c**

"OUR FINEST QUALITY" CONCENTRATE A&P
ORANGE JUICE - 6-Oz. Can for **29c** 12-Oz. Can **27c**

2 Pkgs. Frozen Downy Flake Waffles --- **29c** **A&P Green Peas** 2 10-Oz. Pkgs. **35c**

All Detergent
Lg. Pkg. **35c**

Super Suds
Lg. Pkg. **32c** Gt. Pkg. **79c**

Vel Powder
Large Package **31c**



These Prices Effective Through Sat., July 28th

A&P'S FRESH FRUITS AND VEGETABLES

RIPE & JUICY	CRISP FRESH	SWEET MEATED
Watermelons	Lettuce	Honeydews
Per Lb. 3c	2 Lg. Hds. 25c	Lg. Size Each 53c

**Memorial Forest To 'Trees' Author
Newly Accessible By Improved Road**

Joyce Kilmer Forest, a 3,800-acre tract of wilderness deep in the North Carolina mountain country, is newly accessible by improved motor road as it nears the 20th anniversary of its dedication as a memorial of the man who wrote the immortal poem "Trees."

The memorial forest, one of the few remaining examples of the vast hardwood forests which covered the Southern Appalachians centuries ago, was dedicated on July 30, 1936, 18th anniversary of Sergeant Kilmer's death in France during World War I. It lies within Nantahala Forest, southwest of the Great Smoky Mountains National Park, and is preserved in its primitive and natural state.

An improved motor road looping around Lake Santeetlah from Robbinsville, and Highway 129 is the approach route to the memorial forest. The short spur road from this route to the forest entrance was rebuilt last year. The spur road terminates in a cool glade where there is a parking and picnic area. From the glade, a marked hiking trail leads into the forest. Beside the trail stands a section of tree trunk bearing a plaque with Kilmer's poem "Trees" lettered on it. Further along the trail, beneath the giant trees in Poplar Cove, there is a bronze plaque bearing the inscription:

Joyce Kilmer
165th Infantry—Rainbow Division
Soldier and Poet
Author of "Trees"
Born in New Brunswick, N. J.
December 6, 1886
Killed in action in France
July 30, 1918

Movement for the memorial was initiated by the Veterans of Foreign Wars at their 1934 encampment, which petitioned the Federal Government to set aside a fitting area of trees to stand for all time as a living memorial to the soldier-poet.

Giant poplars, hemlocks, oaks, sycamores, basswoods, beech, and other varieties of trees grow in the forest. Some of them are 80 inches in diameter and more than 150 feet tall. Native ferns, mosses, flowers, and shrubs grow on the forest floor.

At any season, the forest gives visitors the feeling of exploring a true wilderness, because a five-minute walk into it seems to take them miles from civilization and years back into history.

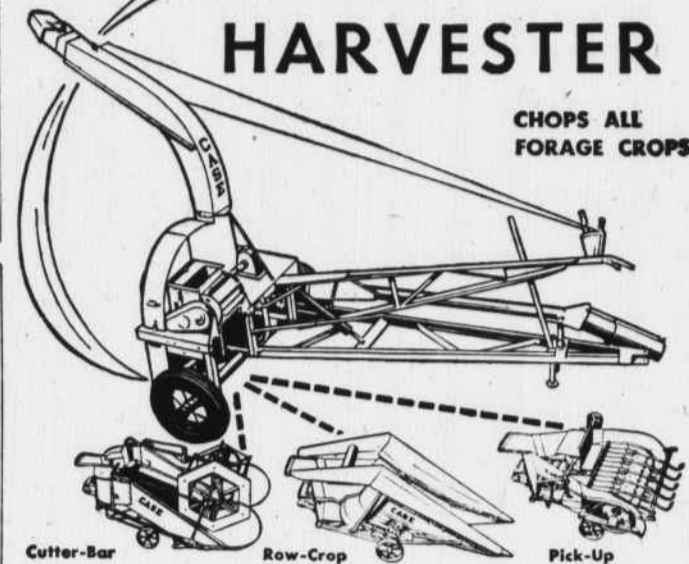
It is very quiet in the forest, and always cool, even in mid-

only a little sun filters through the thick branches overhead. In the spring, wildflowers and blossoming shrubs line the forest trails and stream banks. In autumn, the light through the brilliant foliage is like that through stained glass windows.

Some 20 miles marked hiking trails lead through the marvelous and varied vegetation, along cool streams, and up over the bold peaks and ridges of 5,000 feet or more.

For all of its remoteness and primeval beauty, Joyce Kilmer Memorial Forest is within an hour's drive of lodges and motor courts at Robbinsville and Tapoco, and is less than 50 miles from Fontana Village, largest resort in North Carolina's Great Smoky Mountains. Near the memorial forest entrance and surrounded by national forest lands is an inn, which makes a spring wildflower pilgrimage to the memorial forest an annual attraction. Nearby is a lodge popular with sportsmen who hunt bear and Russian wild boar in the Santeetlah Wildlife Management area.

CASE QUICK CHANGE FORAGE HARVESTER



CHOPS ALL FORAGE CROPS

ONE BASE MACHINE handles all forage crops—row crops, hay, grain—standing or windrowed—green, wilted, cured. Takes one man only five minutes to mount any of the three interchangeable crop-gathering units: row-crop, windrow pick-up, cutter-bar. Each unit on its transport truck or dolly rolls into place and mounts with three bolts.

L. E. ENGLISH

"Your Case Dealer"
Phone 60-J Franklin, N. C.

BARGAIN SPECIALS

Compare - - Anywhere

On our Famous Marquette Appliances

Full automatic 30 in. stove . . . has push buttons, glass oven door, automatic Oven Controls and clock.

RETAILS for \$289.95

Our Price - - - - - **189.95**
Save **\$100.00**

40-inch Stove, single oven

RETAILS for \$359.95

Our Price - - - - - **229.95**
Save **\$130.00**

40-Inch Stove

Double Oven, Retail for \$419.95

Our Price - - - - - **279.95**
Save **\$140.00**

Fully Automatic WASHING MACHINE, retail for \$239.95

Our Price - - - - - **169.95**
Save **\$70.00**

Super Deluxe 15-ft. Home FREEZER

This freezer has two-tone styling, baskets and huge fast freezing compartments. Guaranteed by us.

Retail for \$499.95

Our Price - - - - - **264.95**
Save **\$135.00**

We have a Service Man Who Is Available
For Any Service Call

AUTO PARTS AND EQUIPMENT, INC.

PHONE 246 PALMER ST. FRANKLIN, N. C.