

## SOUTHERN PINES PUBLIC SCHOOLS RANK WITH BEST

High School Fully Accredited for College Entrance; State Honors in Music, Dramatics

### MANY PRIVATE SCHOOLS

With an enrollment of 535 pupils in the high and elementary schools, 20 more than in the second month of school last year, the Southern Pines Schools are now well into their seventh year under the direction of Superintendent Frank W. Webster—a period of years during which, due to the combined efforts of the School Board and Superintendent Webster, the high school has consistently raised its standards until today it ranks with the best in the state, and with few exceptions, in the entire South.

It is a member of the Association of Secondary Colleges and Schools of the South, giving it a rating of a fully accredited institution whose graduates are acceptable to colleges and universities without entrance examinations, and it offers, in addition to its regular collegiate preparatory curriculum, training courses in business with a wide variety of vocational choice for the pupils.

In the field of extra-curricular activities, the Southern Pines High School Dramatic Club has won the State championship for three out of the past five years, competing against schools with much larger enrollments, and its Choral Club has won high State honors for the past five years.

In athletics the school has teams in tennis, basketball, baseball and golf that creditably represent it.

### Course in Dramatics

In addition to the regular college preparatory and commercial courses the high school curriculum this year carries two new courses for Juniors and Seniors; a course in Dramatics and a course in Vocational Guidance. The Dramatics course will deal with the improvement of diction, public speaking, quality and tone control of the voice and the appreciation and production of plays. The Vocational Guidance course will be devoted to a general survey of the various vocations, their possibilities and the general qualifications for those vocations—with especial emphasis on ascertaining and correcting the individual vocational and educational needs of the class members.

In addition to Superintendent Webster, the school faculty comprises the following:

Elementary Grades—Mrs. Jessie W. Dwight, Miss Emilie May Wilson, Miss Sophie Howie, Miss Abbie Sutherland, Miss Bess McIntyre, Miss Jessie Fitzgerald, Miss Mary Buckner, Miss Selma Stegall and Miss Ann P. Huntington.

High School and Seventh Grade—Miss Sarah L. Ellis, Miss Pauline Miller, Mrs. Ruth W. Warner, Miss Aline Todd, Miss Elizabeth Scarborough, E. N. Stirewalt, D. W. Gamble, Amos C. Dawson and Miss Lucille Palmer.

There are also several private schools in and in the immediate vicinity of Southern Pines. These include The Academy of Notre Dame, a resident and day school for girls, offering primary, grammar school and college preparatory courses; The Ark, a resident and day school for kindergarten, sub-primary and grammar grade students, and the Southern Pines Nursery School for children of ages two through five.

Plans are also in progress for the establishment here of a boy's preparatory school and the organizing committee for this project hopes to have the first units in operation by the time school opens next fall.

### JUNIOR CIVIC CLUB TO PRESENT "BOWERY DANCE"

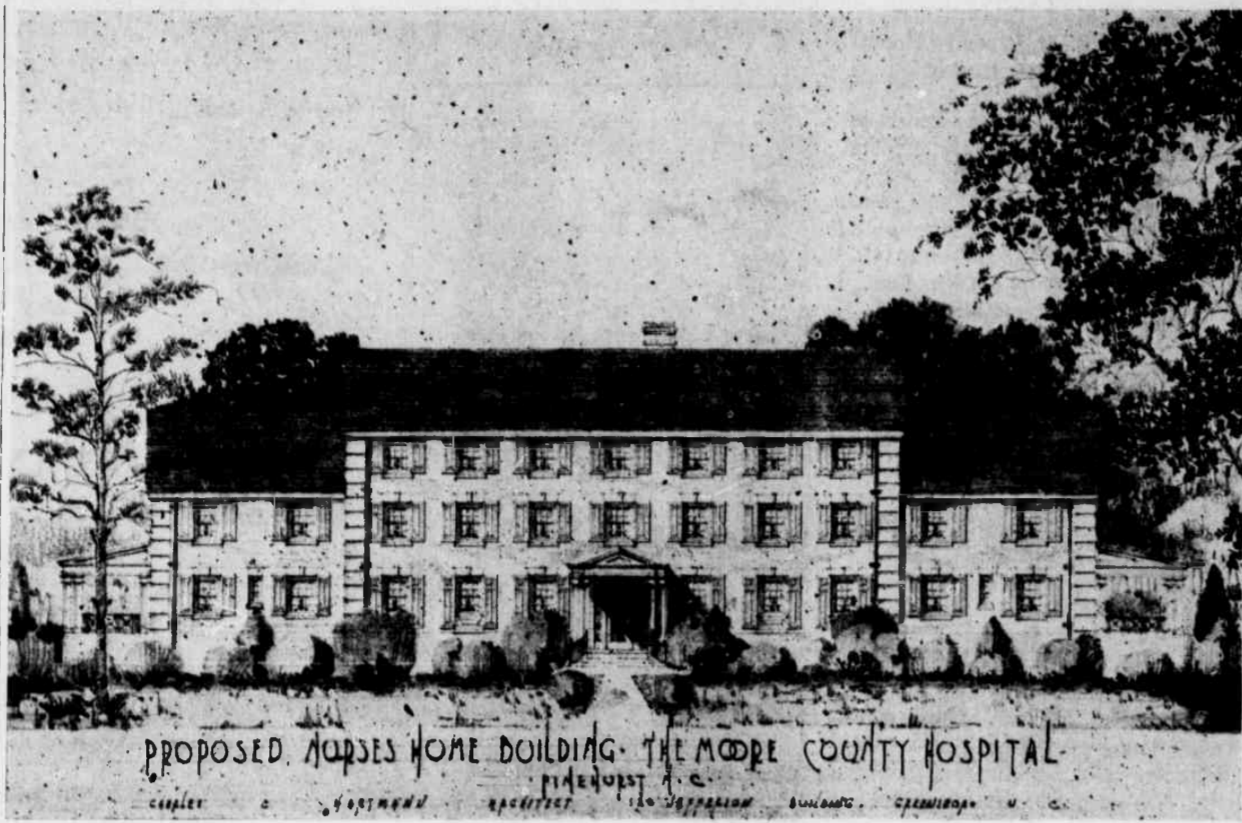
Next Friday evening, November 25th, from 9:00 p. m. to 1:00 a. m., the newly organized Southern Pines Junior Civic Club will present, as its first activity of the season, a Bowery Dance to be held at the Civic Club building.

Although this dance will be primarily a costume affair, the wearing of costumes will not be obligatory and the committee urges that you not let the matter of a costume interfere with your plans to attend.

A colored orchestra from Pinehurst will supply the music and the subscription price of \$1.00 will be used for the benefit of the "Brownie" Girl Scouts.

The Fort Bragg artillery reservation, largest in the world, extends to within two miles of the city limits of Southern Pines.

## Architect's Drawing of New Nurses Home For Moore County Hospital



## New Nurses' Home For Hospital Modern, Complete, Essential

### Private Donations Needed To Supplement Federal Grant and Other Contributions

Another important milestone in the improvement program of the Moore County Hospital was reached on September 1, when construction of the Nurses' Home actually began.

In February, 1937, the New Wing was opened. Through the additional facilities thereby provided, the hospital is a changed place. More and better work at lower cost has been the immediate result.

But a glance at the plant showed anyone the glaring need of a Nurses' Home. Rented houses in the village, a mile from the hospital, constituted an expensive and unsatisfactory way of lodging the young women who carry the burden of graduate and student nursing. There have been no provisions for recreation, no aids to study and improvement, and small opportunities for fostering morale. Moore County nursing has maintained a high standard in the face of great difficulties.

Application to the Federal Emergency Administration of Public Works resulted in a grant of \$29,250.00 toward the building of a Nurses' Home, and with this assistance the directors voted, on June 29, to undertake the task at once. Land for the site had been already secured, through the generosity of Curtis Wigg, and of Pinehurst, Incorporated. A fund for construction had also been started.

The Building committee gave much thought to the plans. The exterior will be brick, with a slate roof, and the Home has been designed to harmonize with the hospital itself. It will have three stories and a basement, and be completely fireproof.

All sleeping quarters will be single, in accordance with the widely held view that every nurse should have a room which she may call her very own. There will be a sitting room, bedroom and bath for the Superintendent of Nurses, three suites each containing two bedrooms and a bath, and 35 other bedrooms equipped with running water. General bathrooms will be large and well-appointed.

On the main floor a big living room, with broad windows and a fireplace, will be the center of the

Home. A library lined with books will invite study and relaxation. For parties, special occasions, and "day off" breakfasts there will be a small dining room and a small but complete kitchen.

A large play room, situated in the basement but generously supplied with windows, will furnish space for exercise, games and dancing. Rest hours may be spent, if desired, on a sun deck opening from the second floor. And at each end of the building there will be porches, arranged for hot weather living. The aim throughout, in planning the construction and furnishings, is to create a Home that meets every functional test, but which gives the effect, not of an institutional annex, but of a gracious dwelling place.

To safeguard the comfort and health of the nurses is only fair and proper. But it is likewise excellent business. Every thoughtful dollar invested in the Home means increased energy and efficiency in the nursing staff, and therefore increased safety and satisfaction for all patients.

The treasurer has estimated that the new building will bring about reductions in Hospital maintenance costs which will be equivalent to the income from a sizeable endowment. And when emergencies occur the entire nursing staff will be at hand, ready for action.

The building will cost \$64,000.00, and the furnishings about \$8,500.00, bringing the figure for Home and furnishings to approximately \$72,500.00. Of this amount, the PWA grant of \$29,250.00 constitutes 40 percent. Of the remaining 60 percent, or \$43,250.00, about \$13,250.00 has been already raised, leaving approximately \$30,000.00 more to be secured. This task is a heavy one, and the directors respectfully bespeak the assistance of every friend and supporter.

Charles C. Hartmann, of Greensboro, who designed the new wing, is also the architect for the Nurses' Home. The building committee is composed of George P. Hawes, Jr., chairman; Jackson H. Boyd, Mrs. Paul Dana, Mrs. John L. Given, L. E. Pender, and Kenneth B. Trousdell.

### FLORAL DISPLAYS

A place of interest to Springtime guests of Southern Pines is the outdoor garden surrounding the Chandler Greenhouses, where the vari-colored tulip beds and the noted Camelia Japonica are always an attraction. During the colder weather the extensive hothouses are always open to visitors. At this writing the display of chrysanthemums of many hues is attracting numerous visitors.

**J. N. Powell, Inc.**  
Funeral Directors  
24 HOUR AMBULANCE SERVICE  
PHONE 6161 - SOUTHERN PINES

To serve those who call upon us to the best of our ability and with thoughtful fairness is the basis upon which our organization is formed.

H. G. McELROY  
Manager

## Royalton Pines Dairy Products Lunch Room

BREAKFAST — DINNER — SUPPER

We Serve a Delicious Luncheon of Home Made Products

The Best Cup of Coffee in Town

We Have Fresh Every Day  
Mrs. Olive's Home Baked Bread, Cakes and Pies.  
Milk, Cream, Chocolate Milk and Ice Cream

## Royalton Pines Dairy

THE HOME OF THE PURE BRED JERSEY HERD. INSPECTED AND CERTIFIED BY THE U. S. GOVERNMENT

W. W. OLIVE

East Broad street, next to Pender's Southern Pines

## Shoe Repairing

DYEING SHINING

Ladies' Soles Cemented by Latest Process—No Nails  
Satisfactory Work, Promptly Finished

## BILL'S SHOE SERVICE

West Broad Street Southern Pines

The

# Citizens Bank & Trust Company

Southern Pines

THIRTY THREE YEARS OF SAFE BANKING

MEMBER FEDERAL DEPOSIT INSURANCE CORPORATION

PERSONAL CHECKING ACCOUNTS

COMMERCIAL CHECKING ACCOUNTS

SAVINGS DEPARTMENT

SAFE DEPOSIT and STORAGE VAULTS

## Paint Protects as well as Beautifies

The value of your house will increase and be protected by the kind of a job we do.

SKILLED WORKMEN GUARANTEED PAINTS

See Our Washable Wallpapers

SHAW PAINT & WALLPAPER CO.

J. A. Smith, Manager  
East Broad Street Tel. 7601 Southern Pines