

One inch of rainfall is equal to one hundred tons per acre. Some 50,000 tons of corn tassels, previously discarded yearly are now being considered for livestock feeds—since scientists have found the tassels richer than corn kernels in vitamins A, B-1, and B-2. America is truly a land of the free. Why, just think of it. Here in America, you can even, almost, argue with an employee.

FALL SHOWING

Ladies Coats
Suits Suits Blouses
Dresses

Fine Assortment of Sweaters
for Men, Boys and Ladies
Ladies' Dress Shoes
Girls' Oxfords and Loafers

Melvin Bros., Inc.
"Trading Center of the Sandhills"
Southern Pines and Aberdeen

BUSINESS OPPORTUNITY

For Lease

SHELL SERVICE STATION

and

LUNCH ROOM

INTERSECTION HWY Nos. 15-211

IN ABERDEEN

LIVING QUARTERS ON PREMISES

PHONE OR WRITE:

Quality Central Oil Co.
CANDOR, N. C.

Our Insect Friends and Foes
MAN, the INTRUDER



When handling insects such as bees, man must protect himself.

Who is crowding whom? In his battle for his place on the earth, Man often forgets that the insects have been there at least 100 times as long as he. Lice on his chickens, ticks on his cattle, fleas on his dog, aphids in his garden and thousands of other annoying attacks warn mankind that the insect world is still to be reckoned with.



Two fifths of the vegetable growth on the earth is eaten by insects sooner or later.

WORLD WIDE FOOD SHORTAGE
This year again man is fighting for his food supply. There is a world shortage. The official word has gone out from Washington that America must help feed the other nations. Insect damage of garden and fruit crops can be kept at a minimum by spraying with lead arsenate to kill chewing insects and with black leaf 40 to control sucking insects. "Grow a garden and protect it in 1946," say the government officials.

IN 1946 Garden for FOOD

PRODUCTION OF MEAT SHOWS LARGE INCREASE

Nation-wide meat production under Federal inspection for the week ending July 20 totaled 391,000,000 pounds, 19 per cent more than the 327,000,000 pounds for the preceding week and 43 per cent above that produced during the corresponding last year.

Slaughter cattle under Federal inspection was estimated at 348,000 head, 29 per cent above last week and 38 per cent above a year ago.

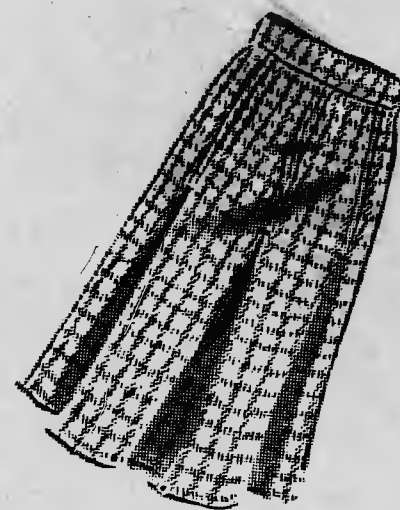
Beef production was calculated at 178,000,000 pounds, com-

pared with 130,000,000 a year ago. Hog slaughter shows an even greater gain, and is estimated for the week ending July 20 at 1,048,000 head, which was six per cent greater than the slaughter a week earlier and 66 per cent greater than the slaughter for the corresponding week a year ago.

Lard also showed a large increase in estimated production for the past week, up to 32,700,000 pounds, compared with 24,700,000 pounds in the same week last year.

Subscribe to The Pilot, Moore County's Leading News-Weekly.

Show Your Colors . . . this Fall
Curvaceous FALL SUIT
Skirts



TRY ON YOUR FAVORITES HERE TODAY!

DRESSES SWEATERS
For Coat Values

LOOK TO US. THEY ARE SMART AND CHIC . . . TAILORED TO PERFECTION.



Jones Dept. Store

16 STEELE ST. SANFORD

MAY'S

Will Open About Sept. 10th in Belvedere Hotel Building
One of the South's Finest and Most Beautiful Jewelry Stores

WATCHES

Elgin
Hamilton
Bulova
Benrus
Longines
Wittnauer
Le Coultre
Crawford
Rima

DIAMONDS

Keepsake
Lady Crosby
Columbia

PEARLS

Deltah
Marvela
Richelieu

PINS and EARRINGS

Van Dell
Iskin
Lustern

SILVERWARE

National Silver Co.
International
Kirk
Rogers
Community
Manchester
Towle

TIFFIN AND RAINBOW ART CRYSTAL

PARKER AND EVERS HARP PENS

Tie Sets . . . Key Chains . . . Bracelets . . . Pendants . . . Chokers . . . American Queen and Carmen
Expansion Bracelets . . . Watch Chains by Simmons and Bigney.

Complete Line of Leather Goods by Dunhill of London . . . Forstner . . . Le Stage . . . Fraternal
Jewelry . . . Largest Selection of Watch Bands in North Carolina.

And EVERYTHING in JEWELRY.

MAY JEWELRY Co., INC

(Of Southern Pines)

M. A. YORK, CERTIFIED WATCHMAKER, IN CHARGE OF OUR REPAIR DEPARTMENT.

Ring Sizing, Stone Setting and Engraving