

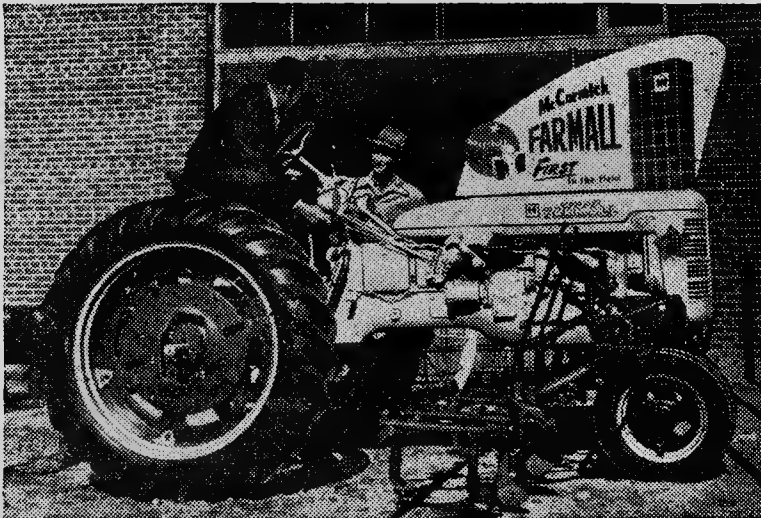
ANNOUNCING

We Take Great Pleasure In Announcing That The Carthage Truck and Implement Company

*Is now located in their new, modern building next door to the Moore County
Freezer Locker on U. S. Highway No. 15 In Carthage, N. C.*

The Carthage Truck and Implement Co., Is Your Dealer For

INTERNATIONAL HARVESTER TRUCKS TRACTORS SALES and SERVICE

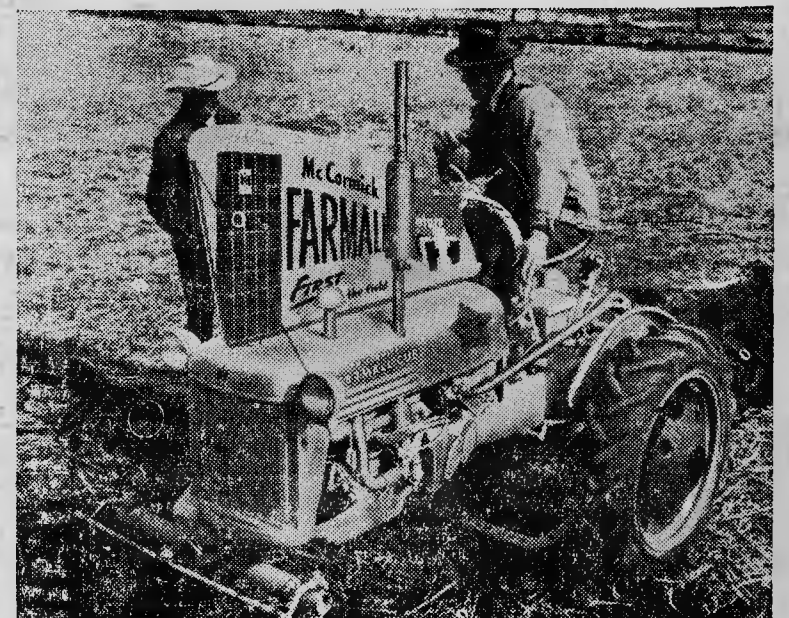


For farms of up to 120 crop acres, and for second-tractor power on larger farms, the Farmall C (above) is a versatile, easy-handling 2-row, 2-pow tractor. The Farmall C is popular with general farmers, vegetable and specialty-crop growers, estate owners and part-time farmers. The Farmall C, specially painted in gleaming white with red wheels, is being featured by International Harvester dealers during the Mid-Century Farmall demonstration campaign. Shown here with forward-mounted 4-row beet and bean cultivator.

Complete Hardware and Builders
Supply

Brixment — Johns-Manville Roofing
Metal Roofing — Plywood — Screen Wire
A Full Line of Sherwin-Williams Paints
and many other hardware items

International Refrigerators
Sales and Service



Farmall tractors painted white, with gold stars, red wheels and a blue and red "teardrop" display over the hood, are being featured by International Harvester dealers throughout the nation during a special Mid-Century Farmall demonstration campaign. Part-time farmers; small, medium, and large-acreage farmers; vegetable and specialty-crop growers; and estate owners are all invited to ask their local IH dealer for a demonstration. The Farmall Cub, smallest of five Farmall tractors, is shown here with a direct-connected McCormick plow. Other Farmall tractors painted white for the campaign are the Super-A and C.

We wish to thank sincerely our many friends and customers who have made this expansion necessary and possible — We are now better prepared to serve you and your needs — Come in and visit us — See our beautiful display room, which, when fully equipped, will contain the most complete stock of hardware and building hardware in this section of North Carolina.

Our fully equipped Service Department will render top quality repairs to your International Truck or Tractor as well as to all other makes.

Carthage Truck and Implement Co.

PHONE 278

CARTHAGE, N. C.

U. S. HIGHWAY NO. 15