

SECOND IN A SERIES

Candidates For Governor, Lt. Governor Questioned On Three Matters Of Statewide Importance By LWV

Last week The Pilot ran a story in which candidates for the U. S. Senate and House of Representatives were asked, and answered, a series of questions submitted by the League of Women Voters of North Carolina.

The questions and accompanying answers were made public by the League as a part of its voters service activities.

This week the league submitted three questions to candidates for Governor and Lt. Governor, both Democrat and Republican, of North Carolina. These questions, unlike those last week which dealt with national policy, are confined strictly to matters of importance in the state.

Answers to the questions were provided as follows:

Question "A"—
What measures looking toward more equitable apportionment of the General Assembly would you favor?

FOR GOVERNOR
Luther H. Hodges-D (incumbent, Raleigh)—"Have appointed a Study Commission—will await its recommendations."
C. E. Earle, Jr.-D, Charlotte—"That found to be just, and necessary."

Kyle Hayes-R, North Wilkesboro—"I would recommend legislation to put into effect the

constitutional requirements."
Thomas B. Sawyer-D, Belmont—"A democratic apportionment based on representation on a basis of population—which I worked for as a Senator in the 1951 Legislature."

Harry P. Stokely-D, Charlotte—"Membership in the General Assembly should be apportioned with each population census on the basis of full compliance with our State Constitution and our State's laws."

FOR LT. GOVERNOR
Luther E. Barnhardt-D, Concord—"We have a Commission, three members of which I appointed, directed to study apportionment of the General Assembly which will report to the 1957 Session. I prefer to study the report of this Commission when it is filed."

Kidd Brewer-D, Raleigh—Candidate had withdrawn when questionnaire was sent out.

Joe A. Dunn-R, Clinton—"I favor apportioning the members of the lower house from a population count, and in the upper house set up thirty districts by an equal area count."

Alonzo C. Edwards-D, Hookerton—"In a democracy I believe in as near equal representation by the people as possible. Reapportionment of representatives should be made as trend of population changes."

Gurney P. Hood-D, Raleigh—"A mandatory act should be passed requiring the apportionment of the General Assembly each 10 years after the census has been completed based on the population. The present system is very unsatisfactory."

J. V. Whitfield-D, Burgaw—"I view the North Carolina General Assembly as a legislative system somewhat on the basis of Congress. I feel that a county should have its representation increased or decreased in accordance with its population, with every county entitled to at least one representative in the House of Representatives. I do not think a county should have more than one Senator, but I do think we should lower the population requirement number for each member of the House, thus giving increased membership in the House for the more populous counties."

Question "B"—
What further steps leading toward separation of the prison system from the state highway department would you favor?

FOR GOVERNOR
Gov. Hodges—"Have announced repeatedly (see press 5-4-56) in favor of the idea. Now waiting Committee's recommendations."
Mr. Earle—"It should be separated. Should never have been combined in the first place."

Mr. Hayes—"I would recommend legislation looking to complete separation of the Prison system from the State Highway Department with a Director of Prisons."

Mr. Sawyer—"Putting into effect the recommendations of the MacCormick Report (Dr. A. H. MacCormick is the leading authority in the field)—which I worked very hard to try to get put into effect as a Senator in the 1951 Legislature."

Mr. Stokely—"The Prison Department should be completely separated from the Highway Department. The prisons could continue to furnish labor to the Highway Department but the administration of the two departments should be completely separate."

FOR LT. GOVERNOR
Mr. Barnhardt—"Before there is a complete separation of the Prison System from the State Highway Department, we should have a definite plan of work for the leisure time of the prisoners (not in competition with outside private business) and enlarged

rehabilitation program."

Mr. Dunn—"Complete separation."

Mr. Edwards—"All prisoners should be given gainful employment by one method or another. Up to the present the Highway Department has offered probably the most satisfactory employment to our prisoners."

Mr. Hood—"In 1931 when the State Prison was consolidated with the State Highway System it was known that the buildings at the State Prison were very inadequate. Since that time all of the buildings have been modernized, they have one of the best hospitals in the State, they have a separate Women's Prison and it is my understanding that the separate Women's Prison and it is my understanding that the prisoners are well fed and cared for."

"The only thing wrong with the State Prison and the Highway Commission is politics. Eliminate politics and your troubles will be solved."

"If the State Prison is separated from the Highway System it will be necessary to take more than \$1,000,000 from the General Fund to support the State Prison which will reduce the amount of money needed for our schools and other purposes."

Mr. Whitfield—"There is only one way to separate and that is to pass the necessary legislation for complete separation, set a date as a goal and work to it. I have found there is no easy way to solve controversial problems.

This particular problem has already been studied. If mistakes are made in the first law enacted, why, corrections can be made at the next General Assembly."

Question "C"—
What measures would you suggest for relief of the General Assembly in dealing with local bills?

FOR GOVERNOR
Mr. Hodges—"Statement of policy by Legislature and strong public opinion to be aroused. Think have law which would handle it properly followed."

Mr. Earle—"This has many ramifications. I doubt this expediency, due to local municipal credits, and bonds, which have to be discretely supervised in order to maintain credit, prompt payments, in all municipal borrowings, and sale of bonds. Mr. Eastering is referee in these matters at Raleigh, and I think that if you would discuss this with him, you might get valuable information."

Mr. Hayes—"I would recommend legislation placing the responsibility of all local self government under a general law which would make the county commissioners of each county responsible to the people for the salaries of all county employees."

Mr. Sawyer—"Complete 'home rule' for cities and counties— which I advocated in the 1951 Legislature in the N. C. Senate."
Mr. Stokely—"I believe that local governments should be given

full opportunity to administer local affairs as fully as feasible."

FOR LT. GOVERNOR

Mr. Barnhardt—"To relieve the General Assembly of the duty of dealing with many local bills, we will probably need a number of Constitutional Amendments and supplementing legislation."

Mr. Dunn—"No comment."
Mr. Edwards—"To invest more authority to county and city boards of commissioners."

Mr. Hood—"Local bills should not be passed by the General Assembly, the General Assembly should pass State Wide Legislation placing the authority in the governing bodies of the counties, cities, and other local units or commissions like the Local Government Commission and the State Board of Education. If necessary, which I doubt, the constitution should be amended."

Mr. Whitfield—"Having served five terms in the General Assembly I have always maintained

that the County Commissioners should be given the power to act on matters pertaining to the business of the counties, except where constitutional powers were involved.


pest problems?

Phone
Fayetteville 2-6731 Coll.

Free inspection



ORVIN
Since 1901
WORLD'S LARGEST



COUNTRY BOOKSHOP
Bennett & Penna. Ave. Telephone 2-3211

Delicious Home Cooked Meals

Friendly atmosphere. Open til 8 p.m. Ample parking space.
Groups invited. Call 2032. DIXIE INN, Vass.

6 YEARS OLD
86 PROOF

\$4.05
4/5 QUART



86 PROOF

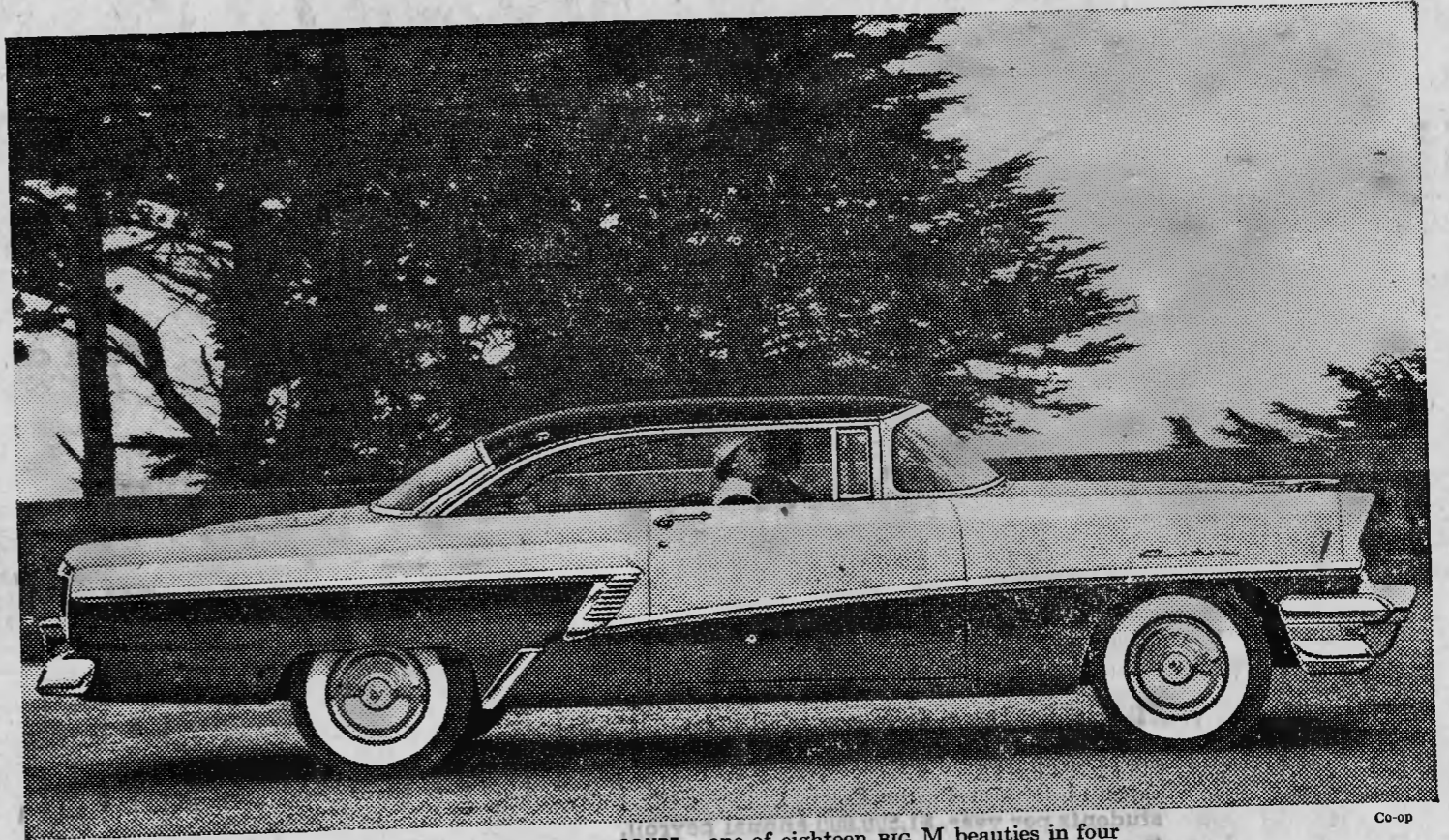
AMERICA'S FINEST
Kentucky
**STRAIGHT
BOURBON
Whiskey**

Bottled by C. D. DISTILLING COMPANY
NICHOLASVILLE, KY.

Bottled by C. D. Distilling Company, Nicholasville, Ky.
Distributed by Canada Dry Ginger Ale, Inc., New York, N. Y.

MERCURY ANNOUNCES INCREASED HORSEPOWER IN ALL 18 MODELS

— at no increase in price!



MERCURY CUSTOM HARDTOP COUPE—one of eighteen big M beauties in four price ranges that give you more usable horsepower and Safety-First Design.

Now! At no extra cost . . . you get **235-hp** in Montereys and Montclairs . . . **225-hp** in Medalist and Custom models when equipped with optional Merc-O-Matic Drive.

Mercury's new increased power gives you faster response than ever before . . . even more usable power for rapid acceleration and safer passing! THE BIG M Medalist and Custom give you more horsepower-per-dollar than any other make of car* and the highest standard horsepower in their price range.

To match the low-cost Medalist's power and high compression, you would have to pay at least \$173 more in any competitive car.* And only Mercury in its field gives you a 4-barrel carburetor as standard equipment on every model. Come in today. Prices start below many models in the low-price field.

*Based on a comparison of manufacturers' suggested list or factory retail prices for 4-door sedan models equipped with automatic transmissions and standard power.

Now—more than ever your **big buy** is

THE BIG MERCURY

JACKSON MOTORS, INC.

U. S. Highway 1

N. C. Dealers License No. 1909
Southern Pines, N. C.

Phone 2-5822



Announcing

THE NEW
AIRTEMP By CHRYSLER
A NEW DO-IT-YOURSELF KIT

Package Unit complete with all ducts and grills for every room in the house

As Low As \$695.00

If you prefer we can make installation for you

TERMS—Up to 3 years to pay.
Call or write for free estimates.

WE ARE ASSUMING ALL SERVICE RESPONSIBILITY ON CHRYSLER EQUIPMENT ALREADY IN SERVICE

Miller Heating & Sheet Metal Co.

Goldston, N. C.
Phone 3535

Southern Pines, N. C.
(Soon)