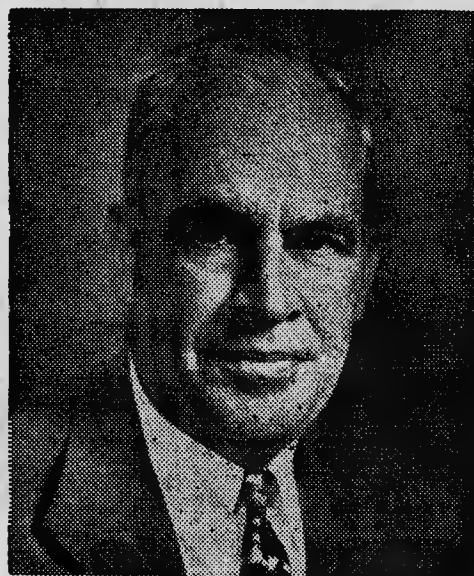


Performance - Not Just A Promise - Proves The

DEMOCRATIC PARTY

Is For You - Not The Favored Few



For Governor: Luther H. Hodges



For President: Adlai E. Stevenson

Better living for EVERYONE has been the result of Democratic plans and action over the years. How has it been during the Eisenhower administration? Here is one important example:

THE FARMERS' CASE AGAINST EISENHOWER

The Democratic Record (1949-52)

Farm income ROSE	15%
Farm prices ROSE	15%
Fixed parity was maintained at	90%

Democrats view the farm support program as "prosperity insurance"—for everybody, not just the farmer. THEY fought to restore firm 90% supports.

The GOP Record (1952-55)

Farm income FELL	26%
Farm prices FELL	18%
Sliding parity has always been BELOW	90%

Republicans view the farm program as mere "disaster insurance." They have cut farm supports for virtually every crop, scrapped firm 90% supports, and adopted "sliding" parity. The farmers' income took a big slide — DOWNWARD.

—And so it is with actions affecting LABOR, SENIOR CITIZENS, VETERANS, SMALL BUSINESS, SCHOOLS. Check the facts and you'll

VOTE DEMOCRATIC!

(This advertisement is inserted for a better America by the Democratic Executive Committee of Moore County)

W. Lamont Brown, Chairman