



Last-minute SHOPPERS SPECIAL!

It's Not Too Late



Catalog Orders placed late as noon Dec. 23 will be ready on Dec. 24

NEXT-DAY DELIVERY ON LATE ORDERS

A DIRECT WIRE to the Greensboro Catalog Order Plant permits this! SHOP IN PERSON or PHONE

CALL 695-8611

"Satisfaction guaranteed or your money back" **SEARS**
705 S. W. BROAD SOUTHERN PINES

FOR YOUNGSTERS, 9-13

Manly Wade Wellman, Former County Resident, Writes Prize-Winning Book

An award-winning book by Manly Wade Wellman of Chapel Hill "Settlement on Shocco: Adventures in Colonial Carolina," for young readers nine to 13, has been published Saturday by John F. Blair, Publisher, of Winston-Salem. Mr. Wellman is a former Sandhills resident. "Settlement on Shocco" is fiction based on the facts of regional history and has won the literary award sponsored by the Carolina Chapter Tercentenary Commission for prose fiction dealing with North Carolina history prior to the American Revolution. The story begins a little over 200 years ago in what is now the southern part of Warren County when a frontier family followed an Indian trail through the wilderness to Shocco Creek and there made a home for themselves.

By 1763, this family along with other settlers found it necessary to form counties, courts, county offices, and militia to protect themselves from exorbitant taxes, Lord Granville's unscrupulous rent collectors, dishonest land dealings, and Indian War. They were proud colonists who realized that their years of labor spent in building the frontier were endangered by King George's tyranny, and that they must soon assert themselves to be free from his oppression. Manly Wade Wellman was born in the Portuguese West African colony of Angola, the son of a medical missionary. He has published over 40 books, many of them dealing with North Carolina, where he has lived since shortly after World War II. Fourteen of his books are novels for young readers dealing with North

Carolina's past and present. Mr. Wellman lives near Chapel Hill and conducts a creative writing workshop at Elon College. When he is not writing, he spends much of his time studying Carolina history and folklore. The Chapel Hill writer lived in Pinebluff for about five years after the war and is widely known in this area.

FLOOR SANDING And REFINISHING
J. B. SHORT
Box 382 Southern Pines Phone OX 5-6411
Floor Covering Hardwood Floors Installed
Wall Tile Ceramic & Plastic Counter Tops
Aluminum Windows, Screens and Doors
All Work Guaranteed Estimates Free
tfn

SAFETY PRECAUTIONS NOTED

Accident Hazard Higher At Christmas Time, Medical Group Advises Parents

Christmas is a time of bright little lights on a tree in the parlor, of shiny glass ornaments and decorations, of filmy spun glass filaments, of toys that sometimes have sharp, rough edges, of lots of candy, nuts and other rich edibles.

These are a part of Christmas, and no one is suggesting there's anything wrong about it. The American Medical Association at this holiday season, however, points out once again that there are safety hazards at the Christmas season that aren't usually encountered during the rest of the year. A few simple precautions can help insure a safe Christmas for your household.

—Check over your old strings of Christmas tree lights and discard those that are worn or brittle. If there are very small children around your house, discard burnt-out bulbs with caution, so that baby can't get at them.

—Keep the glass ornaments and filmy glass "angel hair" out of baby's reach. The ornaments crumble readily into sharp slivers.

—Make absolutely certain that no toys coated with lead-based paint are included in Santa's pack. Lead poisoning is a danger should the child chew on the toy. Most manufacturers now avoid dangerous paints.

—Select toys with a minimum of sharp, rough edges, toys that won't burn quickly if flicked with a candle flame, toys that are large enough so that baby can't swallow them.

—Electrical toys, such as trains, also should be selected with safe-

ty in mind. Is the wiring intact and strong, or is it loose and flimsy?

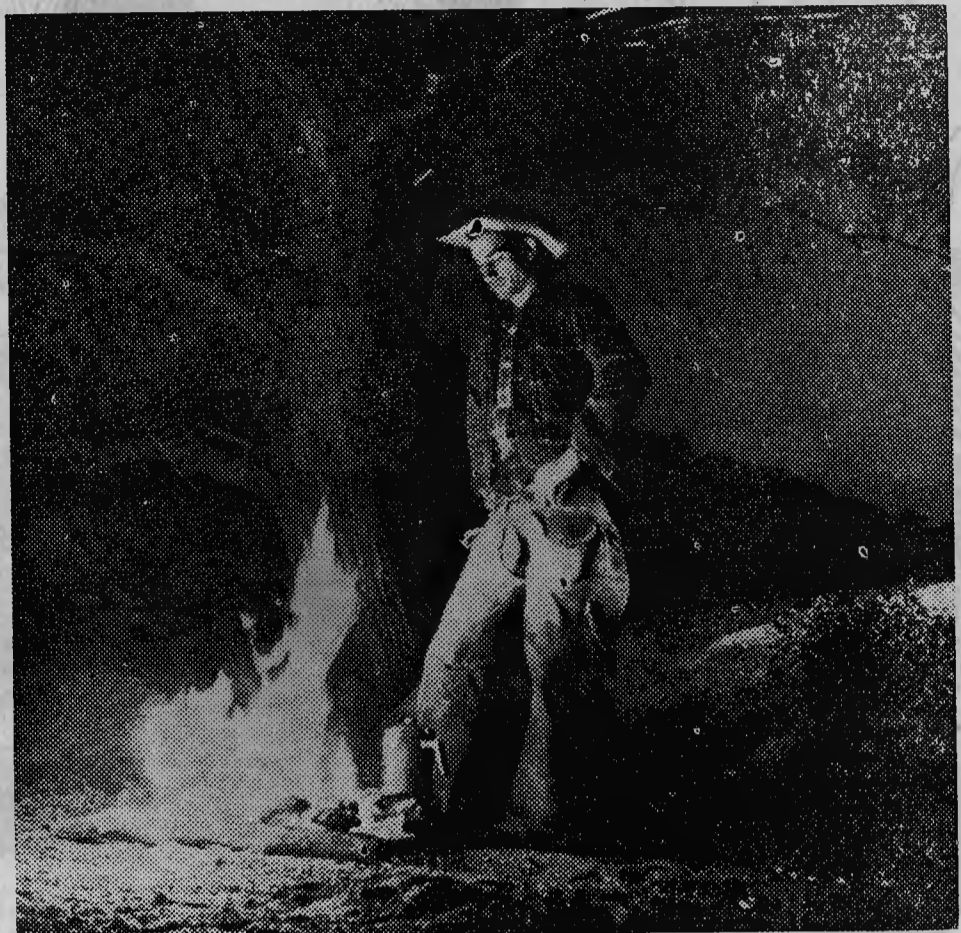
—Air rifles, sling shots, archery sets and other missile throwing toys are obviously dangerous if carelessly used. Set up target ranges and make certain the youngster is taught to use the toy properly and safely.

This list could be continued, but you can make your own. The prime objective of an article such as this one is to remind parents that in the bustle and excitement of Christmas, accidents can happen. Certainly no one wants to spoil the holiday with undue worry. Make your plans for a safe Christmas, and then enjoy it to the hilt.

Moore Co. Road Surfacing Listed

State Highway Commissioner Elsie Webb of Ellerbe and Rockingham reports the completion of more than 29 miles of road improvements in Moore, Richmond, Scotland, Hoke and Montgomery Counties during the months of October and November.

Moore County roads which were surfaced are: 1.4 miles SR 1112 from SR 1004 to Deep Creek; 0.1 mile SR 1230 from US 1 to US 15-501; 0.1 mile service road on US 1 bypass at Southern Pines; 1.4 miles SR 1414 from SR 1412 to SR 1415; 1.2 miles ST 1657 from US 15-501 to SR 1656; 2.6 miles SR 1484 from SR 1487 to SR 1479; 0.2 mile SR 1628 from SR 1006 to dead end; and 1.1 miles of streets in town of Vass.



AN AMERICAN HERO

The true cowboy: living American symbol of independent man. Today there aren't as many true cowboys around. But the spirit they stand for is part of all that is America.

That spirit lives in the professions, businesses and industries that serve you today—enterprises built and run by free and independent people. Businesses owned by investors—by people like you and your neighbors—who still prize their freedom and their individuality.

Yet some other people think that our federal government—rather than individuals—should own certain businesses. Our investor-owned electric light and power companies are one of their chief targets. These are companies built, run, owned by and employing people who believe in individual effort. They have served you well, and you have made them strong by your support as a customer.

When you consider what our country has always stood for, can you see why anyone should want our federal government to do any job it doesn't have to do—such as owning and managing the electric light and power business? Isn't it best to leave that to individuals, like you, who believe individual effort is the quality that will always keep our nation strong?

CAROLINA POWER & LIGHT COMPANY
An investor-owned, tax-paying, public utility company

KEEP UP WITH LATE VALUES IN PILOT ADS.

WILD TURKEY

8 YEAR OLD STRAIGHT BOURBON WHISKEY-101 PROOF



\$8¹⁰ FIFTH

AUSTIN, NICHOLS & CO., INC. NEW YORK, N.Y.

You don't have to burn money to keep warm

Professional study lets you and your builder examine all the facts, making sure your heating system is chosen with your welfare in mind.

HEATING FUELS COST COMPARISON IN SOUTHERN PINES				
	WITH NORMAL INSULATION		WITH EXTRA INSULATION (required for electrically heated homes)	
	ANNUAL FUEL COST	TOTAL 20 YEAR COST Installation, fuel, interest, depreciation, maintenance and repair	ANNUAL FUEL COST	TOTAL 20 YEAR COST Installation, fuel, interest, depreciation, maintenance and repair
FUEL OIL	\$121	\$3,860	\$ 75	\$2,720
NATURAL GAS	\$162	\$4,520	\$103	\$3,080
ELECTRICITY resistance heat	\$269	\$6,240	\$162	\$3,980

The cost of Natural Gas would be slightly less if used for cooking, etc.



Figures compiled by a registered engineer, based on the detailed plans of this average home with 1800 sq. ft. of heated area.

You put out less money for Oil Heat . . . because Fuel Oil puts out more heat!
EAST CAROLINA OIL HEAT COUNCIL

