

MAYTAG Sales & Service Parker Oil Co.

tfn ABERDEEN

PILOT ADVERTISING PAYS

SOIL TEST CAN TELL AMOUNT

If Needed, Extra Phosphorus Will Pay Good Dividends For Farmers

By F. D. ALLEN
County Extension Chairman

Extra phosphorus applied to soils low in phosphorus will pay good dividends.

Most of our growers apply some phosphorus to their soils at planting time. This phosphorus is applied in mixed fertilizers such as 5-10-10, 6-6-12, or 4-8-12. This is needed on practically all of our soils, but many of our soils need phosphorus in addition to the amount applied in the mixed fertilizer.

Where soils are low in this nutrient, it is advisable to broadcast superphosphate and disk it into the soil prior to the regular "at-planting" fertilization.

There are several reasons for this need for extra phosphorus. First, the phosphorus in fertilizers does not move far from the point that it is applied. Therefore, broadcasting and mixing throughout the plow layer assures you of an adequate supply of available phosphorus. Mixing throughout the soil can only be accomplished prior to seeding pasture and hay crops which remain on the soil for several years.

A second reason for broadcasting "extra" phosphorus is related to the capacity of the soil to "fix" phosphorus. Fixing means changing the phosphorus into forms which are not readily available to plants. Your red soils are usually high in iron and aluminum and have a large capacity to tie up or "fix" phosphorus. This means that broadcasting extra phosphorus in clay soils that are low in phosphorus is extremely important. This fixing capacity of a soil is somewhat overcome by placing fertilizer in bands at planting for row crops.

Soil acidity is another factor affecting fixation. Soils that are below pH5.5 have more soluble iron and aluminum; therefore, more phosphorus is fixed, making it important to lime these acid soils so that applied phosphorus can be used more efficiently.

The amount of phosphorus that should be applied depends primarily on the level of phosphorus in the soil, crop to be seeded, and the soil type. A soil test is the only practical way of determining the level of soil phosphorus. Results of a soil test sent in now can be obtained in seven to 10 days. Later in the year, it may take three weeks or longer.

4 Moore County Students Enrolled At Appalachian

Of the 3,030 students presently enrolled at Appalachian State Teachers College, four are freshmen from Moore County according to the registrar, Dr. Ben Strickland.

The Moore County students are Donnie M. Baxter, Joanne Bibey, Gary Elton Britt, and Janet Kay Howard. Home addresses were not given in the news release from the college.

Advertising is the sparkplug of our economy. It helps make mass distribution possible; that in turn calls for mass production. Mass production and mass distribution give most of us jobs and generate the prosperity upon which all of us depend.

Highway Group To Meet October 12

The Annual Meeting of U. S. No. 1 Highway Association will be held in Augusta, Georgia, Monday, October 12, with headquarters at the Town House Motel. The business session will open at 11 am, a dutch luncheon will be held at 1 pm and the meeting will close with a meeting of the new officers and directors starting at 2 pm.

President St. C. Bolin has made arrangements with several motels in Augusta to offer complimentary room accommodations for people attending the meeting who will arrive on Sunday, October 11. Men are privileged to bring their wives. Members of the association have been sent cards to return for room and luncheon reservations.

There will be no meeting on Sunday night for those who arrive that day.

Persons attending are also asked to notify Lester Rose, secretary-treasurer of the association, at P. O. Box 908, Raleigh.

Purpose of the association is to promote the use of No. 1 highway by the traveling public.

Dobbs House Restaurant

At

Whispering Pines Motor Lodge

OPEN ALL YEAR

Let us serve your party the finest meal you've ever had.

No matter what the size of your group... we'll be able to handle it in the best of style... with delicious food, excellent service and an atmosphere that can't be beat. Modest prices.

Open Daily 7 till 3 and 6 till 9

SUNDAY BUFFET 12 to 3 P.M.

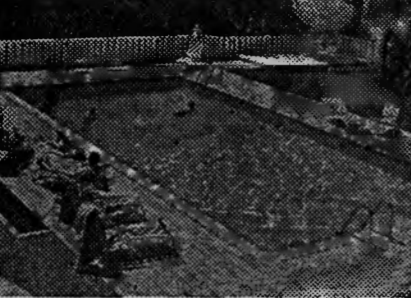
\$2.50 — Children under 10, \$1.50

Phone 692-7632

U. S. 1 - 3 miles North of Southern Pines



IF... YOU EARN \$7,000 OR MORE A YEAR YOU CAN OWN THIS SPARTAN POOL



Durable materials. Rugged galvanized steel sides—won't rust, corrode, crack, warp. Beautiful "Bakelite" vinyl interior never needs refinishing. 10-year guarantee. Five years to pay. Write or phone for more information.

Spartan GALVANIZED STEEL POOLS

We also feature and install the GUARANTEED WEATHER "CRYSTAL PALACE" Garden, Greenhouse, 'Patio and Pool Enclosures

The Laguna Co.

U. S. 1-South, just one-half block South of the Holiday Inn SOUTHERN PINES Ph. 695-7201

FREE DECORATOR SERVICE



MRS. DORIS COX

Want a "Yummy" come hither room everyone will love? Ask our help! We specialize in rooms guests rave about.

Dossenbach's **furniture home**

KENDALE SHOPPING CENTER SANFORD



\$4.00 4/5 Qt.
\$2.50 Pint

THE BOURBON DE LUXE DISTILLERY COMPANY, LOUISVILLE, KENTUCKY. 86 PROOF—CONTAINS 49% GRAIN NEUTRAL SPIRITS.

BUSINESS DIRECTORY

Where To Find What You Want In The Sandhill Area

SOCIAL STATIONERY : GIFT PRINTING WEDDING ANNOUNCEMENTS
All Types of Business Forms
Prompt Service — Reasonable Prices
Phone 2-7271 Southern Pines, N. C.
THE PILOT, Inc.



BILL'S AMOCO SERVICE
On U.S. 1 So. Southern Pines
"We Specialize In Service"
Bill McDonald Ph. 692-2989

POWER MOWERS

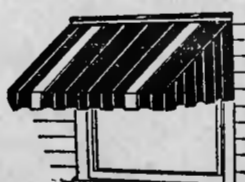
REPAIRED
ABERDEEN GARAGE
400 TARBELL ABERDEEN, N. C. WI 4-1581



SOUTHERN PINES COUNTRY CLUB
Open Year Round



ELECTRICAL CONTRACTORS
ABERDEEN ELECTRIC SHOP
FREE ESTIMATES
Phone WI 4-1370 Aberdeen, N. C.



AWNINGS and CANOPIES
CANVAS & METAL
Mfg. Since 1926
SANDHILL AWNING CO.
Ph. 692-3497 Sou. Pines, N. C.



Shearwood Travel Service
Phone 294-8122 Pinehurst, N. C.
AIR & STEAMER TICKETS
CRUISES — TOURS

SAVE at



McLEAN'S STYLE SHOP
If It's Fashion News — It's Here!
Aberdeen, N. C.
Windsor 4-1181—103 South St.

DAIRY QUEEN

Regular Season
11 A. M. — 11 P. M. Daily
US 1 between So. Pines & Aberdeen



COLLINS DEPT. STORE
Official Boy & Cub Scout
Equipment
Ph. WI 4-1213 Aberdeen, N. C.



CLARK & BRADSHAW
Auto Service
N. W. Broad St. Ph. 692-7171



Transit-Mix Concrete
Any Amount You Need
CONCRETE INC.
OF MOORE COUNTY
Phone 695-4522
U.S. 1 South Southern Pines



Sou. Pines Recapping Co.
Ph. 692-2546 S.W. Broad St. Ext.
Southern Pines, N. C.



Hughie E. Gilchrist
SHOE REPAIR SHOP
SOLES — HALF-SOLES — HEELS
SHOES DYED TO ORDER
West Penn. Avenue
Ph. 692-3180 Southern Pines



ROY TRAILER SALES U.S. 1 South
Phone 695-0673 Southern Pines, N. C.



HAWKINS ELECTRIC SERVICE CONTRACTING
Large or Small
655 S. E. Broad St. Phone 695-8395
Radio Dispatched Trucks



"Climate By Chrysler"
Quality Air-Conditioning
Know-How Service
Southern Pines Plumbing & Heating
U.S. 15-501 South
Southern Pines, N. C. — 692-2301



Sandhills Bonded Warehouse, Inc.
Agents For
AERO — MAYFLOWER
Crating - Packing - Storage
695-5691 U.S. 1 North
Southern Pines, N. C.



HOBBS INSURANCE AGENCY
Insurance and Service
695-7411
118 N. W. Broad St. Southern Pines



MILL OUTLET STORE
Dress Materials and Accessories
Draperies and Upholstery
650 S. W. Broad St.



LONG MEADOW FARMS
Country Fresh Dairy Products
Call 695-5602 For Home Delivery
Southern Pines-Pinehurst-Aberdeen-Charlotte



AMBULANCE SERVICE
POWELL FUNERAL HOME
Phone 692-6161
Southern Pines, N. C.



FIELDS PLUMBING & HEATING
Plumbing - Heating - Air Conditioning
Ph. 295-5952 Pinehurst, N. C.



Bigelow Carpeting
HALLUM FURNITURE CO.
Aberdeen - Rockingham



Shaw Paint & Wallpaper Co.
N.E. Broad St. Ph. 695-8241



ROY KELLY LANDSCAPE SERVICE
Midland Road
Serving
Pinehurst — Southern Pines
Kent Kelly, Mgr. Ph. 692-2251