

TACTICS SHOWN BY ARMY MOVES

Strategical Problems of Warring Nations Are Now Becoming Apparent.

KIEL CANAL IS BIG FACTOR

Capture of Waterway by Enemies of Germany Might Prove Turning Point of War—Importance of Paris and Berlin.

Notwithstanding the meagerness of details from Europe, the strategical problems for Germany and France have become more apparent during the last few days.

France must protect her frontier against German invasion and at the same time she must proceed as fast as possible towards the Kiel canal. That canal is apt to prove the turning point in the war if the triple entente gets control of it, according to a military expert writing for the Chicago Tribune.

Germany, on the other hand, must protect her French border and the Kiel canal and drive her forces into Russia as fast as possible.

The question now presented to Germany and France is where to attack.

The capture of Paris alone at present probably would not bring about a cessation of combat on the part of the French, as the news of war have been well provided further to the south.

Berlin is not Germany even to anywhere nearly as great an extent as Paris is France. The straight line distance from Namur (the fortress before which the Germans have established touch with their French antagonists) to Paris is 150 miles; to Berlin, 400 miles; to the Kiel canal, 300 miles. The distance from Mulhausen to Berlin is about 400 miles; to the Kiel canal, 500 miles.

But the distance from Paris to Mulhausen is about 250 miles, and from Namur to Mulhausen is 220 miles, and almost straight south by east of it, therefore away from Paris. While a

opportunity and advanced on Namur, Mulhausen, Colmar and the little strip in Lorraine, which were not defended, as it might be possible that the enthusiasm and popular clamor of the French would force an invasion of their lost provinces of Alsace-Lorraine. But it is highly improbable that a determined advance in force will be made on this line even should popular clamor demand it.

The German Plans.

Germany on the other hand has not only France to attend to but Russia as well. In considering her plans she also must take into account Austria. Should Russia be allowed to mobilize fully and concentrate, it is probable that she would be able to overwhelm Austria, first attacking on the Lemberg-Bucharest (Roumania) line. It is probable that Germany is acting with rapidity against Russia.

What press dispatches have drifted through indicate that 40,000 Germans landed some three days ago between Hango and Helsingfors in Finland. This force in all probability consisted of one army corps and one cavalry division, some additional heavy artillery, engineers and aeronautical troops.

From Warsaw to St. Petersburg there are 12 Russian corps, but as these are not fully mobilized one German corps is probably as strong in men as two Russian corps just now. The German corps which landed in Finland and therefore behind St. Petersburg is undoubtedly designed to hold the four Russian corps in that vicinity to keep them from going to the assistance of the other Russian corps further to the south.

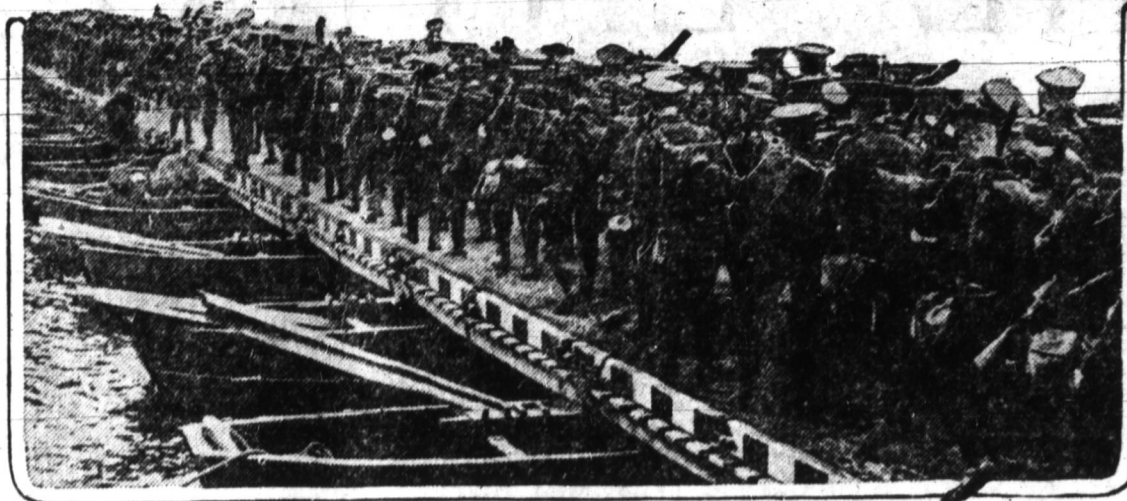
Again it was reported that the Russian government has decided to evacuate Warsaw, which was officially denied at St. Petersburg. Weighing this evidence, it seems probable that there has been a German advance from Intersburg in the direction of Vilna to hold the four Russian corps stationed in that district from doing any harm or going to any other place. Possibly three German corps, whose stations are close to Vilna, are engaged in that operation.

If the vigorous fighting of these four German corps, the one in Finland and the three against Vilna, is strong enough, eight Russian corps might probably be isolated and fully occupied with their own affairs and not able to move or concentrate anywhere else.

Austrians Invade Russia.

It is reported that 150,000 Austrians had been assembled in Galicia and that

BRITISH INFANTRY CROSSING A PONTOON BRIDGE



COMMANDERS OF FAMOUS COSSACK REGIMENT



YOUNG SERVIAN INFANTRYMEN

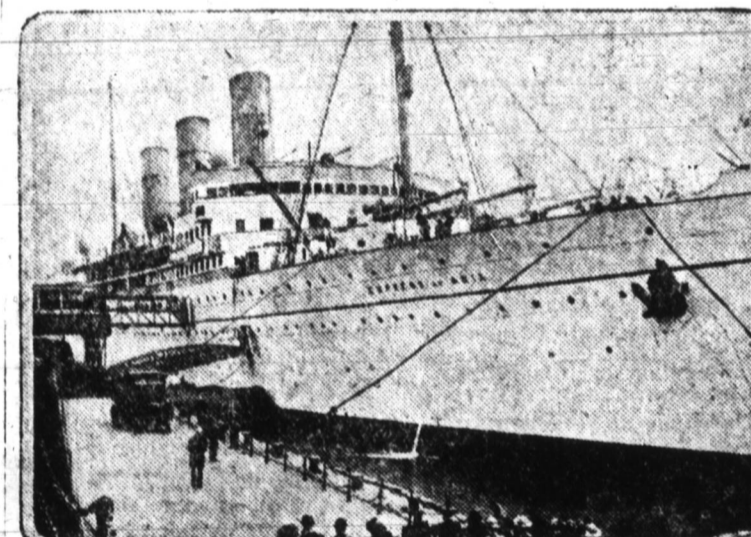


MIGHTY MONARCHS ALLIED IN WAR



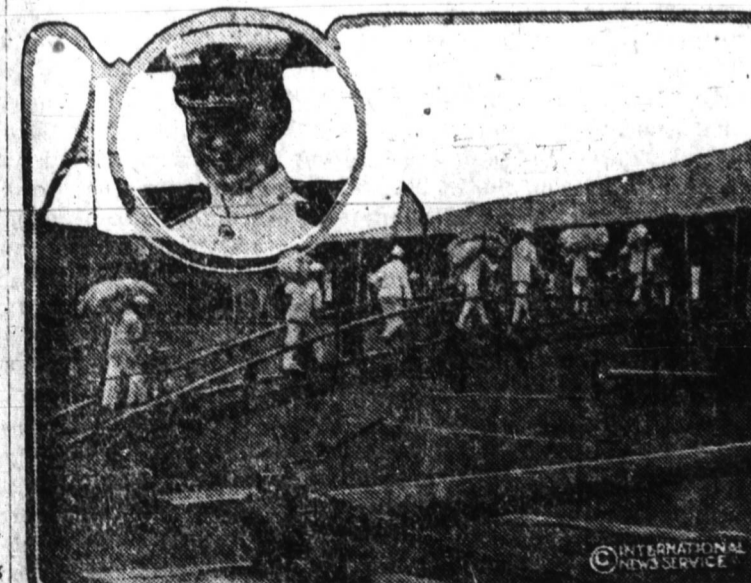
The King of England (right) and the czar of Russia, photographed together at one of their recent meetings.

COMMANDEERED BY THE BRITISH



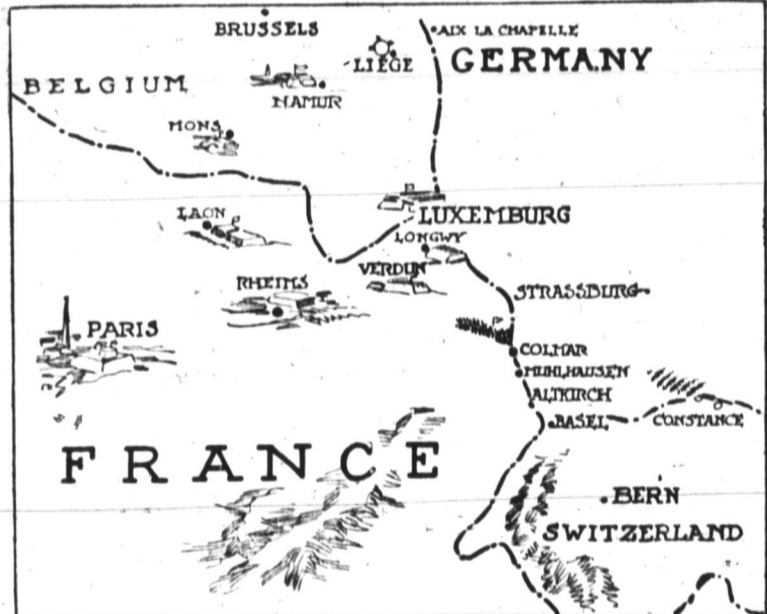
The Canadian-Pacific liner Empress of Asia, fastest steamship on the Pacific, commandeered by the British admiralty and armed at Hongkong as a cruiser.

FUNDS FOR STRANDED AMERICANS



Carrying the supplies aboard the cruiser Tennessee, to be taken to Europe to relieve the distress of American tourists. Insert is portrait of Capt. B. C. Decker, in command of the Tennessee.

THE FRENCH FRONTIER



march or line of operations directed on Berlin would involve a defeat of the German main army and such a great penetration of German territory probably would paralyze the defense—the distance is 400 miles. Every mile will be bitterly contested and every mile means thousand of lives and millions of money.

Kiel Canal Big Factor.

The Kiel canal is the deciding factor in the control of the sea. It is 300 miles from Namur. Many of Germany's great supply points are in the interval between. An advance on this line would be near the sea, where England could help with her ships. Once the Kiel canal is captured annihilation of the German fleet might result, which would give command of the Baltic sea to France and her allies and allow the unrestricted transport of Russian troops and material of war to the north German coast.

It therefore would appear that the strategy of France will aim at the capture of the Kiel canal, because it is the most important point strategically which Germany possesses. By this line of action France would utilize to the utmost England's great sea power.

In addition, by a direct invasion in the direction of the Kiel canal France would cover Paris and her communications better than by any other route. An advance via Mulhausen and Strasburg would be extremely dangerous and just what the Germans would like to see France do. Hence we see why Germany seized Liege at the earliest

44,000 of these were cavalry. This means that the three Austrian corps stationed in Galicia, or a little less than 100,000 combatants, with nine divisions of cavalry, about 44,000, have gone into Russia, but just where is left to the imagination.

Six corps, three German and three Austrian, and from 50,000 to 70,000 cavalry are probably advancing towards Brest-Litovsk. By the time these arrive there it is difficult to see how the Russians can have more than three full corps and 10,000 to 20,000 cavalry. Austrian troops have advanced along the eastern frontier that is just north of Roumania.

It seems probable that on the French frontier at the present time Germany has nine corps of the active army, assisted by one Austrian corps on the German extreme left, near the Swiss border. There probably are nine more corps of the first reserve and nine more of the second reserve also on the French frontier, which with all their auxiliaries amount to well over 1,000,000 fighting men.

It appears that if these million Germans care to remain on the defensive on the French border it will take a pretty goodly number of attackers to get them out of their intrenchments, if they ever can do it. Providing Austria and Germany are directing their main attack against Russia, France to reap any advantage must strike quickly and hard on a line as short, in a military way, as possible toward the Kiel canal.

HORRORS OF WAR TOLD BY FLEEING REFUGEES

Holland has become the asylum of Europe. People expelled from half a dozen countries are pouring into this country by every route.

From the Dutch-Belgian frontier, from Vise to Liege, the country is a wilderness. The villages of Berneux and Moulard were destroyed by shell, fire and flames.

A correspondent who traveled over

the battlefield in an automobile found evidence of a desperate defense on the part of the inhabitants and savage vengeance meted out by the German soldiers.

The correspondent saw seven bodies of civilians in a ditch. An old man with an umbrella still in his grasp was found dead on a road. Army wagons had passed over him.

The bodies of scores of German soldiers lay along the sides of the road. All their household goods had been abandoned by the fleeing inhabitants.

STUDYING THE WAR MAP



Kaiser Wilhelm, on the left, looking over a war map with his commander-in-chief, Gen. von Moltke.

The Kaiser has now gone to the front to command personally his armies that are trying to invade France.

Throw away the washboard. Use RUB-NO-MORE CARBO NAPHTHA SOAP. Save your back—save your temper—save your clothes—make washday play-day. "Carbo" kills germs. "Naphtha" cleans. Watch results.



RUB-NO-MORE CARBO NAPHTHA SOAP is harmless to the finest fabric and makes your wash sweet and sanitary. It does not need hot water.

Carbo Disinfects RUB-NO-MORE Carbo Naphtha Soap
Naphtha Cleans RUB-NO-MORE Washing Powder

Five Cents—All Grocers

The Rub-No-More Co., Ft. Wayne, Ind.

A HOME AND AN INCOME FOR LIFE

Ozark Mountain lands, partly improved, \$5 to \$25 per acre, easy terms. Along Mo. and No. Ark. Railway. Other big land bargains. Write or call for further particulars. OZARK TIMBER COMPANY, Southern Trust Building, Little Rock, Ark.

PIGS

Registered Berkshire pigs; fancy breeding; choicest individuals; prolific breeders; big type kind. A. C. Phillips, Watertown, Tenn.

In Siberia. "Pleasure party?" asked the first Cossack. "You might say so," answered the other. "We're going for a knouting."

You can safely place faith in Hanford's Balsam of Myrrh. Adv.

Not From the Burns Collection. "Where did golf originate, Sandy?" "It was first spoken in Scotia, lad."—Philadelphia Ledger.

Let's Be Charitable. The inventor of the first player piano is dead at eighty-five. Peace to his ashes. Let us forgive him. He never knew what his device would do to nervous folk in our noise-ridden American cities.

Unreasonable. George Bernard Shaw is one of the few vegetarians who have remained true to the faith, and in a recent letter to a woman, reproaching her for her fight against the cigarette when she still ate meat, Mr. Shaw said: "The lack of logic prevails everywhere! We call the tiger a ferocious and ravaging beast, but what would you ladies be called if, for example, the lamb chop had a voice?"

Couldn't Corner Him. "Count," said the lady to the foreign nobleman at the charity bazaar, "won't you buy this rose. It is only \$5." "I am very sorry," said the Count, with a courtly bow, "but the price is a little too high."

The lady kissed the rose. "And now, Count will you buy it?" "No, madame," he said, with a still deeper bow. "Now the rose is priceless."

Well Meant. On one occasion when the king and queen of Great Britain visited together very elaborate preparations were made for their reception. The city was lavishly decorated and one enterprising tradesman, desiring to display his loyalty, had the words, "Heaven bless them both!" outlined in paper flowers across the front of his shop. Unfortunately he forgot to remove a large business sign that was just above. The result read: "Ham and beef sandwiches." "Heaven bless them both!"

DISAPPEARED Coffee Ails Vanish Before Postum.

It seems almost too good to be true, the way headache, nervousness, insomnia, and many other obscure troubles vanish when coffee is dismissed and Postum used as the regular table beverage.

The reason is clear. Coffee contains a poisonous drug—caffeine—which causes the trouble, but Postum contains only the food elements in choice hard wheat with a little molasses.

A Phila. man grew enthusiastic and wrote as follows: "Until 18 months ago I used coffee regularly every day and suffered from headache, bitter taste in my mouth, and indigestion; was gloomy and irritable, had variable or absent appetite, loss of flesh, depressed in spirits, etc." "I attribute these things to coffee, because since I quit it and have drank Postum I feel better than I had for 20 years, am less susceptible to cold, have gained 20 lbs. and the symptoms have disappeared—vanished before Postum."

Name given by Postum Co., Battle Creek, Mich. Read "The Road to Wellville," in pkgs.

Postum comes in two forms: Regular Postum—must be well boiled. 15c and 25c packages. Instant Postum—is a soluble powder. A teaspoonful dissolves quickly in a cup of hot water and, with cream and sugar, makes a delicious beverage instantly. 30c and 50c tins.

The cost per cup of both kinds is about the same.

"There's a Reason" for Postum.—sold by Grocers.