

THE ENTERPRISE

Published every Tuesday and Friday by the ENTERPRISE PUBLISHING CO. Williamston, North Carolina

W. C. MANNING, Editor J. F. CROMER, Lessor and Manager

Subscription Price (Strictly Cash in Advance) 1 year \$1.00 6 months .50c 3 months .25c

Printed at the Post Office at Williamston, North Carolina as second-class matter.

TUESDAY, JUNE 14, 1922

ARE THE RAILROADS RESPONSIBLE?

Who is it that is throwing the free flow of the goods of commerce? Who is it that obstructs the handling of coal and timber as so much coal and timber is lost for the actual needs of the country?

PERMANENT INCREASE IS NEEDED IN RYE PRODUCTION IN THE U. S.

From an agricultural point of view there is need for a considerable permanent increase in the production of rye in this country, says the United States Department of Agriculture. In many localities rye will give better yields and more food per acre than wheat.

Rye is also harder than wheat. The rye belt of the United States extends across the country about 300 miles north of the winter wheat belt. In the present spring wheat area of the northern Mississippi valley winter wheat generally will not survive the winter unless given protection.

The risk in growing rye is generally somewhat less than it is with wheat, particularly spring wheat. Rust and hot weather do not affect it so unfavorably, and Hessian fly and other insect pests are not so liable to cause damage. Besides the growing

of rye for grain, there is a large use of it as winter cover and green manure. Its general adaptability and hardiness make it particularly desirable for this purpose, especially when grown in combination with many legumes, like hairy vetch, which also in the eastern states is being cultivated by use of this combination of cover crops.

Whether there is a market demand for rye its production in the United States is largely increased. A marked increase occurred during the war, following an enlarged foreign demand, small crops of wheat, and restrictions on the use of wheat in this country. This increased production has persisted, largely on account of maintained foreign demand, the rye crop in 1922 being more than double the 1913 crop. This increase in rye sowings is important in its significance as to the place of rye in American agriculture.

COTTON GRADING COURSE TO BE GIVEN AT THE STATE COLLEGE OF AGRICULTURE

Work will be given daily throughout the month of June and will include actual grading.

A course in cotton grading and stapling will be given in connection with the State College Summer school beginning today, June 12, and continuing for six weeks. Dr. W. A. Withers, the director, announced yesterday.

The work should be of special interest to cotton buyers, mill men and cotton growers in that the present United States cotton official standards are to be replaced by revised standards on the first of August of the present year. The revised standards will be used in the course and incidentally, it will be the first time they have been exhibited in North Carolina.

AS BUYER, SELLER AND SHIPPER, THE FARMER GETS THE WORST OF IT

Official figures from the Department of Agriculture and the Department of Labor disclose that the farmer's condition has not been improved by two republican tariffs or by any other legislation or action of the Harding administration. On the basis of prices in 1913, the index of agricultural

products is 129 while the index for all other commodities is 110. Agricultural products have a purchasing power of 109, compared with 1910, while the purchasing power of other products is 110. In plain language this means that the commodities which the farmer has to buy are 110 points higher than they were in 1913, while those which he has for sale are only 10 points higher.

In addition to the depreciation of his own products and the enhancement of every one else's, the farmer also pays a higher freight rate than other shippers. With 1913 as the base, the freight rate on agricultural products is now 106. The average rate on other products is 101. Through the operation of the republican tariff and the republican transportation law the farmer is in worse shape than other sufferers. Whether he is buyer, seller, or shipper, he gets the worst of it.

NOTICE OF RE-SALE

Under and by virtue of the authority conferred in me by a certain deed of trust executed by W. L. Bailey and W. A. Bailey to the undersigned trustee, and bearing date of January 2, 1917, and a record in the public registry of Martin county in book 0-1, at page 24, said deed of trust to secure the payment of certain note of even date and tenor therewith and the terms and stipulations in said deed of trust not having been complied with and at the request of the parties interested the undersigned trustee will on Monday, the second day of July, 1922, at 12 o'clock, m., at the court house door of Martin county, at Williamston, N. C., offer at public sale to the highest bidder for cash the following described tract or lot of land, to wit:

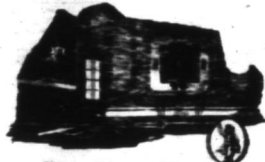
Beginning at the corner of W. L. Bailey and W. A. Bailey's store on Rogerson street and Main street, running with Rogerson street eighty five feet west to a stob, a corner; thence south fifty five feet with W. R. Rob-

erson's line to a stob, a corner; thence east eighty five feet with W. L. Roberson's line to a stob, a corner, on Main street; thence north with Main street fifty five feet to the beginning.

This is a re-sale of this property, a raise in the bid having been made according to law.

This the 29th day of May, 1922. DENNIS BAILEY, Trustee.

Dunning, Moore and Horton, 5-29-4tp. Attorneys.



Give Your Home That Well-Groomed Look

The rare tapestries and paintings in the homes of very wealthy people are beyond most of us. Still the most important decorative medium used in such homes can be well afforded in the tiniest cottage. Paint made of Dutch Boy white-lead and flitting oil adorns the walls of countless homes whose owners need not consider cost.

In your home, too, on walls, woodwork and ceilings, this restful flat paint can give to each room that well-groomed look. No glare—just a soft even finish that can be safely washed. And with the new finishes produced with paint your every fancy in the way of design and color can be nicely met.

You need not feel obligated if you ask us to talk it over. Any time. Our stock of paint materials is of the highest order.

ROEBUCK AND WHITE

Screen Doors and Windows

MADE TO ORDER

WILEY ROGERSON & COMPANY

Robersonville, N. C.

A VICTORY FOR AMERICAN MOTORISTS

The Crude Rubber Monopoly weakened when it came in contact with public sentiment. The press of the country today reflects the determination of the American motorist that tire prices shall stay at a reasonable level—and that America must produce its own rubber.

Firestone CUTS TIRE PRICES

10%

We announce a 10% reduction in tires and tubes effective June 11. The lowered cost of crude rubber and the special Firestone manufacturing and distribution advantages make this possible.

Firestone factories are organized on a basis of large volume, and effective production. Costs are down but quality is at its peak. Stockholder workmen are daily building many thousands of Gum-Dipped Cords—the best Firestone ever produced, and we believe, the leader on the market today.

Firestone cords took the first four places and eight of the ten money positions in the

Indianapolis sweepstakes, May 11, without a single tire failure.

Firestone Gum-Dipped Cords have set new standards in mileage, traction, comfort and safety. Car owners have expressed their approval of the extra value in Firestone Gum-Dipped Cords by increasing their purchases 194% in the past six months. We have replaced many expensive branches with warehouses. We now have 165 distributing points which are delivering Firestone tires to the consumer at the lowest cost in any history.

Follow the tide of economical tire buying—equip with Firestone Gum-Dipped Cords—and learn what Most Miles per Dollar means to you today.

Get a set of these Gum-Dipped Cords from one of the following dealers:

B. R. BARNHILL, Williamston, N. C.

L. A. PEEL & SON, Plymouth, N. C.

COX MOTOR COMPANY, Robersonville, N. C.

Most Miles Per Dollar



Makes Cleaning-Time Easy

Old Spring-cleaning buckets are out of style. A little RED SEAL Lye does the work better and a lot easier. The clever woman finds many ways of making it work for her.

Let us suggest a few of the many uses to you.

Write for booklet. Full directions in each can. Be sure and buy only the genuine RED SEAL Lye.

F. C. Young & Co., Williamston, N. C.



BOAT LINE

DETVEEN

Williamston, N. C.

AND

Norfolk, Virginia

Save 20 per cent to 33 1/3 per cent on your freight rates

STEAMER "CLYTIE" LEAVES NORFOLK EVERY MONDAY AND THURSDAY AT 6:00 P. M. FROM N. O. 1203 WATER ST. ARRIVES AT WILLIAMSTON EVERY WEDNESDAY AND SATURDAY AT 7:00 A. M. RETURNING LEAVES WILLIAMSTON AS SOON AS CARGO IS DISCHARGED AND RETURN FREIGHT LOADED.

HAVE YOUR SHIPMENTS FROM RICHMOND, PETERSBURG, N. Y., BALTIMORE, PHILADELPHIA, BOSTON AND PROVIDENCE, R. I. ROUTED VIA THIS LINE. WE MAKE CONNECTION WITH THE VARIOUS STEAMBOAT LINES OPERATING BETWEEN NORFOLK AND THESE POINTS.

OUR GREATLY REDUCED RATES WILL SAVE YOU MONEY.

Norfolk, Baltimore and Carolina Line C. D. CARSTARPHEN, Agent

WAREHOUSE FOOT OF MAIN ST. OFFICE, MAIN ST. WILLIAMSTON, NORTH CAROLINA

TELL THEM THROUGH THE ENTERPRISE YOU'LL SELL THEM YOUR MERCHANDISE

Harrison Bros. and Company

Summer Dresses

Just received a shipment of summer dresses, and we have a large assortment to show you—from \$3.00 up.

Bathing Suits, Caps and Shoes

Good old summer time is here, and you will sure want a bathing suit, and we have a large assortment for you to choose from.

Everfast Suiting

We have a line of Everfast cloth that is good for all kinds of children's clothing and ladies' dresses. We guarantee the color to be fast and if the goods should fade from any cause whatever, we will refund your money and pay you for making the garment.

Come in and let us show it to you.

Harrison Bros. & Co.

COME AND SEE IS ALL WE ASK WILLIAMSTON'S LARGEST DEPARTMENT STORE