

# Forty Youngsters Reporting For Football Practice Here

## Only Five Letter Men Are Back in Uniform

### Schedule Changes Being Considered Here This Season

### "Great" Team Believed Now In the Making in Local High School

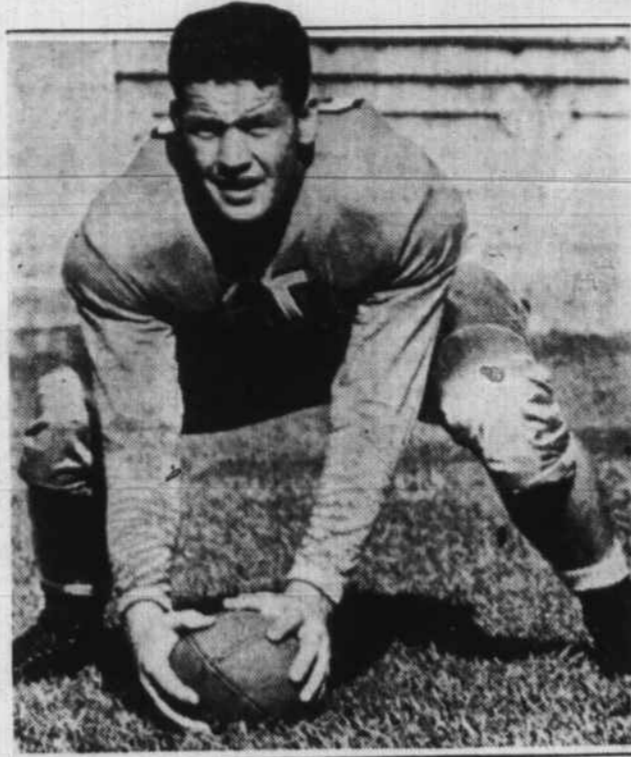
The Williamston High School boys adopted football as the style this fall. At the first call from Coach Edwards, 40 sturdy youngsters struggled through the first drills last Monday. The first day of hard work made no dent in the number out for the squad as all the boys are coming back every day to stand their punishment. Wednesday's practice was limited to the necessary "blackboard"

work because of rainy weather. Coach Edwards expected all the boys to be in good shape today for a real practice session with all the trimmings before the boys get their first week-end rest.

Only five lettermen returned to the squad for the present season: Cullipher, Bailey, Sullivan, Wynne and D. Roberson. Miller, who was a regular last fall at the opening of the season, but was forced to retire on account of injuries, is back to add great weight to the strength of the line.

Many of the boys who struggled along as substitutes last fall are bidding high for a regular berth this year. The linemen include: J. Manning, R. Griffin, Billie Peel, Rogers, Taylor, Pender, Godwin and B. Weaver. Those trying again for the backfield are J. Critcher, J. D. Wool-

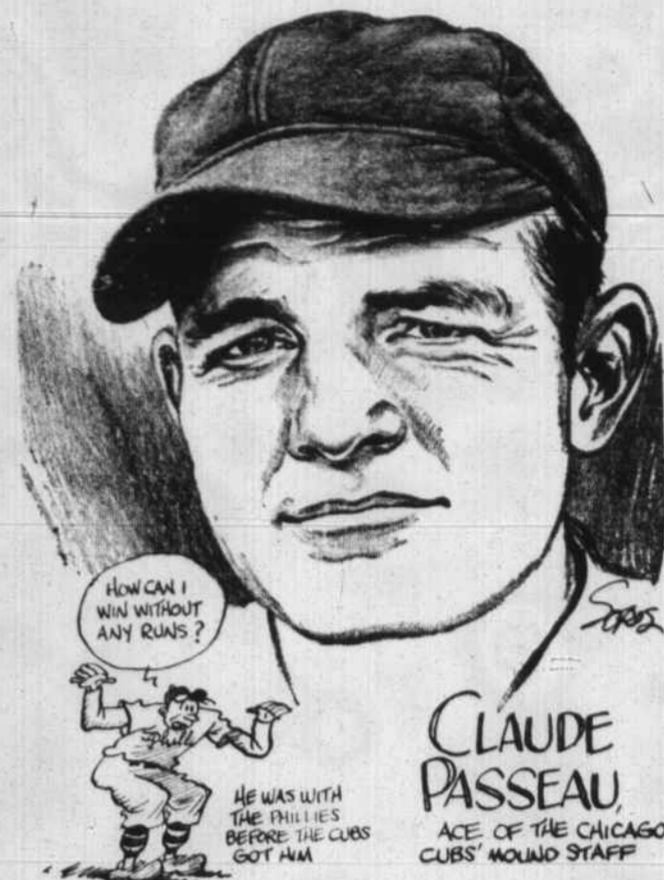
## U. N. C.'s Bob Smith



An important cog in Coach Ray Wolf's gridiron machine is Bob Smith, University of North Carolina center. Bob enters the

1940 season with a fine reputation, outstanding on both offense and defense, having gained high praise from rival coaches.

## CUBS' MAINSTAY . . . By Jack Sords



## Will Duke "Bow" On New Year's Day

According to pre-season dope, the Duke Blue Devils seem destined to receive an invitation to play in some "bowl" game next New Year's Day—that is, if Coach Wallace Wade's proteges can conquer a powerful Tennessee in its home stadium, and win the North Carolina classic with the Tar Heels.

The Duke-Tennessee game, to be played at Knoxville, is rated a toss-up, although it seems Duke's sensational sophomores of last year will break the tradition of beating Tennessee at home. And that Carolina-Duke game will worry Coach Wade as in the past for despite the fact that the Blue Devils are heavy favorites, anything can happen at this battle and usually does.

With the passing of George McAfee—the big Duke backfield star may be Frank Killian, although Wes McAfee, Jap Davis, Siegfried and an unlimited number of others are threats in themselves. The Blue Devil line should be slightly stronger than last year.

At Carolina, the Tar Heels will be hard to stop if Coach Ray Wolf can find a suitable man to fill George Strunweiss' shoes. Jim "Sweet" Lajane will pair up with Paul Severin. All-American end, to form one of the best passing combinations in the United States and with Harry Dunkle, leading punter in the nation, back in harness the Tar Heels will not have to take much pushing about.

Coach Peabody Walker is still without a passer at Wake Forest, and although the Deacons led the nation last year in ground gaining, the aerial department is becoming a big unit in present-day football. The Deacons' line is not expected to be as strong as last year with the loss of both regular tackles who played practically all of the time. But with a backfield contingent headed by John Polanski, Red Mayberry and Ringgold, Wake Forest is set to spring the usual number of upsets.

N. C. State and Davidson will round out the Big Five standings with little to look forward to. State is improving, but Coach Newton will not be able to push the Wolf-pack up into the top flight this season.

## Future of Organized Baseball Here in Uncertain State Now

The future of organized baseball in Williamston is in an extremely muddled state but recent developments are encouraging, to say the least. According to Coastal Plain President Ray Goodman, Martin's President J. Eason Lilley has already paid the annual \$30 franchise protection fee and reserved his players for another season.

Martin's manager, Red Swain, who it was rumored had been released, is still officially a chattel of the local club.

However, several adverse factors enter on the debit side of the ledger. Unofficial reports from a trustworthy source reveal that the Boston Red Sox, Rocky Mount Red Sox parent club, is planning to remove that city's franchise to Lynchburg, due to lack of attendance. This action lends credence to rumors that Rocky Mount, boasting a beautiful ball park, would seek a berth in the Coastal Plain circuit. Others regarded as anxious to snap up the local franchise, should President Lilley default: Washington, Smithfield, Dunn, Fayetteville and Wilmington.

ard, Weir, Mercer and Cunningham. With five of the "reasons" for the Green Wave's great team last year migrating to Mars Hill College, and others to State College and Clark's Drug Store, prospects for this fall seemed rather slim. But several of the bigger boys are coming to the rescue. Some of the Greenies showing real talent and hope include: William Lilley, Garland Wynne, R. Cherry, S. C. Griffin, Langley, Get-singer and Bateman. Several outside boys have come in for the shop work and are eligible for football: Howell Peel, Clifton Ward and Clyde Holland.

A few more midgets were added to the list: Carrow, Goff, Chesson, Crattick, C. Peel, Bachelor, Parker, Hargett and Clayton.

Plans are being completed for a nine-game schedule which will be available later.

Unofficial reports from the gridiron state that the locals will hardly be in a position to maintain the tough schedule in effect during the past several seasons. It has been pointed out that the youths, game as they may be, are not large enough to accept the punishment ordinarily dished out on the football field.

**CARD OF THANKS**  
We wish to express our appreciation to everyone for their kindness to us and to our daughter, Peggy, during her recent illness. Particularly, we thank Rev. Patrick N. Gallagher for the blood for the transfusion.

E. C. Harrison and Family.

## DUKE-TENNESSEE

One of the most important early season gridiron contests will be played between Duke and Tennessee, when they meet at Knoxville on October 5th.

Both teams are rated near the top of the national list and the outcome of the battle may decide which school will be represented at some "bowl" next New Year's Day.

Meeting once more, Coach Wallace Wade, of the Blue Devils, and Major Bob Neyland, of the Vols, two of the outstanding coaches of the United States, will be out to capture a victory. And when this pair go after a win, it is a beautiful and exciting affair to witness.

The experts say it is a toss-up, but Duke usually wins that kind.

## Home Refreshment

Buy the six-bottle carton



MIRACLE WHIP SALAD Dressing, 16-oz. jar . . . . . **19¢**

Unsweetened Grapefruit JUICE . . . . . 3 No. 2 cans . . . . . **20c**

Pender's Best FLOUR . . . . . 12-lb. bag . . . . . **39c**

Oleo HONEY NUT . . . . . 1-lb. ctn. . . . . **9c**

Fresh Pack Tender Green PEAS . . . . . 2 No. 2 cans . . . . . **15c**

**PURE LARD**  
1-LB. **7¢** 4-LB. **28¢**  
CTN. CTN.

Camay Soap . . . . . 4 cakes . . . . . **25c**

Large Chipso . . . . . pkg. . . . . **21c**

LAND-O-LAKES Aged Cheese . . . . . lb. . . . . **18c**

OUR PRIDE Triple-Fresh Bread, 10-oz. loaf . . . . . **7½c**

D. P. BLEND Double-Fresh Coffee . . . . . 2 lbs. . . . . **35c**

Franco-American Ready To Serve SPAGHETTI . . . . . 3 cans . . . . . **25c**

Franco-American Ready To Serve SPAGHETTI . . . . . 3 cans . . . . . **25c**

Franco-American Ready To Serve SPAGHETTI . . . . . 3 cans . . . . . **25c**

Franco-American Ready To Serve SPAGHETTI . . . . . 3 cans . . . . . **25c**

Franco-American Ready To Serve SPAGHETTI . . . . . 3 cans . . . . . **25c**

Franco-American Ready To Serve SPAGHETTI . . . . . 3 cans . . . . . **25c**

Franco-American Ready To Serve SPAGHETTI . . . . . 3 cans . . . . . **25c**

Franco-American Ready To Serve SPAGHETTI . . . . . 3 cans . . . . . **25c**

Franco-American Ready To Serve SPAGHETTI . . . . . 3 cans . . . . . **25c**

Franco-American Ready To Serve SPAGHETTI . . . . . 3 cans . . . . . **25c**

Franco-American Ready To Serve SPAGHETTI . . . . . 3 cans . . . . . **25c**

Franco-American Ready To Serve SPAGHETTI . . . . . 3 cans . . . . . **25c**

Franco-American Ready To Serve SPAGHETTI . . . . . 3 cans . . . . . **25c**

Franco-American Ready To Serve SPAGHETTI . . . . . 3 cans . . . . . **25c**

Franco-American Ready To Serve SPAGHETTI . . . . . 3 cans . . . . . **25c**

Franco-American Ready To Serve SPAGHETTI . . . . . 3 cans . . . . . **25c**

Franco-American Ready To Serve SPAGHETTI . . . . . 3 cans . . . . . **25c**

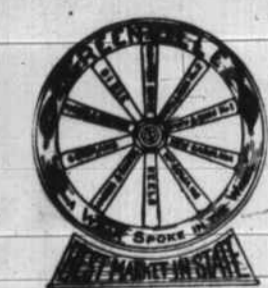
Franco-American Ready To Serve SPAGHETTI . . . . . 3 cans . . . . . **25c**

Franco-American Ready To Serve SPAGHETTI . . . . . 3 cans . . . . . **25c**

Franco-American Ready To Serve SPAGHETTI . . . . . 3 cans . . . . . **25c**

Franco-American Ready To Serve SPAGHETTI . . . . . 3 cans . . . . . **25c**

Franco-American Ready To Serve SPAGHETTI . . . . . 3 cans . . . . . **25c**



# Tobacco Is Selling Higher in GREENVILLE

"BEST MARKET IN STATE"

Monday's Sales 1,359,202 Pounds — \$240,422.81 — Average \$17.69

PRIMINGS, LEAF, TIPS; EVERY LEAF ON THE STALK IS SELLING FOR NEW PEAK PRICES

Don't forget U. S. Government figures prove that GREENVILLE always pays prices above the market level; and every cent you get above the market means extra dollars for your crop.

5 SETS OF BUYERS

5 FIRST SALES

DAILY REPORTS: WFTC — 12:00 . . . . . WGTC — 12:20 . . . . . WPTF — 12:25 . . . . . WGBR — 12:45

