

### Nation's Industry Greatly Influenced By Three Families

#### Voting Power Concentrated In Hands of One Percent Of Stockholders

Three families, the Rockefellers, the duPonts and the Mellons, have shareholdings of almost \$1,400,000,000 which are "so placed as to give them considerable influence if not control" over 15 of the 200 largest non-financial corporations in the United States, according to a report made to the Temporary National Economic Committee. Since the report limits itself to non-financial corporations, it does not deal with the holdings of financial houses such as J. P. Morgan's or the additional concentration that results from pyramid banking control.

Thirteen families, including these three, are reported to hold stocks amounting to \$2,700,000,000 which represents eight per cent of the total shares in these 200 corporations. The twenty largest shareholders in each of the 200 corporations averaged about a third of the total stock, and the majority voting power in these corporations is found to be concentrated in the hands of about one per cent of the stockholders.

These facts from the report were given out by Senator O'Mahoney, chairman of the Monopoly Committee. The report itself which was prepared by the Securities and Exchange Commission has not been made public, and Senator O'Mahoney

explained that he was citing these few findings from the report only because "a leak" had already occurred.

The report pulls the props out from under the belief that stock ownership is widespread and concludes that less than 9,000,000 individuals in this country hold even a single share of corporate stock. Most of these persons have only small amounts of stock and receive only a minor fraction of the dividends paid out.

Ten thousand persons, representing 0.008 per cent of the population, own one-fourth of all corporate stock; and 75,000 persons, representing 0.06 per cent of the population, own one-half of all corporate stock outstanding. At the other end of the scale, the report finds that half of the stockholders get annual dividends of less than \$109. Less than half a million persons derive a substantial share of their income from stock dividends.

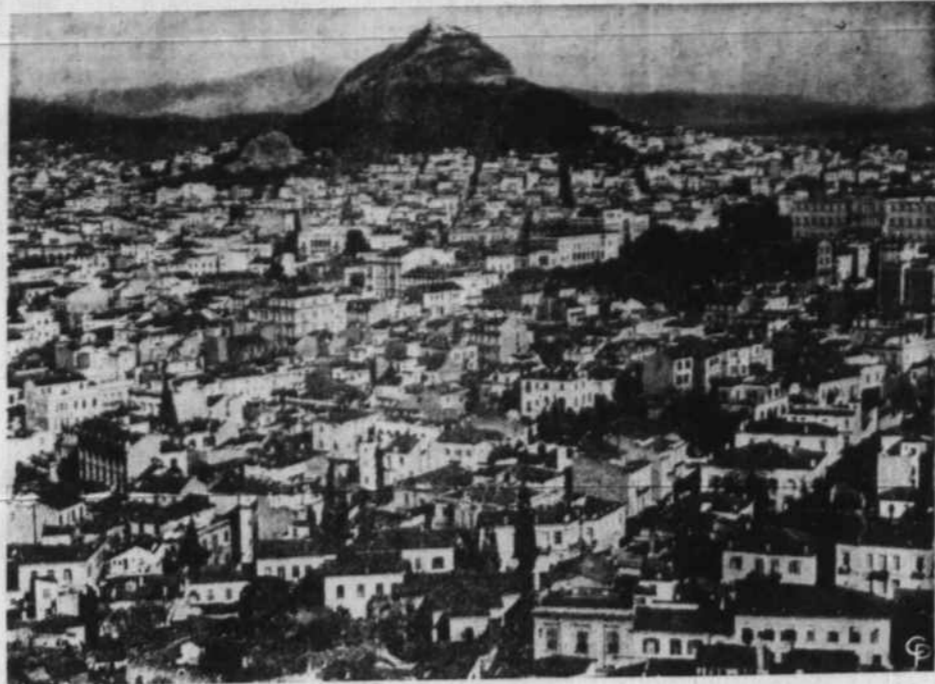
Foreign investors at the end of 1937 held common stock amounting to \$1,800,000,000 and preferred stock amounting to \$200,000,000 in the largest non-financial corporations in this country.

#### Mattress-Making Project Progressing Satisfactorily

The mattress-making project for low income farm families is progressing satisfactorily in Mecklenburg County, reports L. B. Barbee, assistant farm agent of the State College Extension Service.

W. B. Jones, assistant farm agent of Granville County, says it is almost amazing the way farmers of his county have turned to livestock, poultry and other live-at-home practices this year.

### Ancient Athens Threatened by Italian Bombs



Threatened with destruction from the air in the war between Greece and Italy, this is the historic and beautiful city of Athens, capital of Greece. Rising precipitously in the background is the Acropolis, crowned by the ancient Parthenon.

### V. F. W. Honors Head G-Man



In recognition of his "courageous and intelligent leadership in the exposure of fifth column sabotage of American ideals and institutions," J. Edgar Hoover, F. B. I. director, receives a gold medal from the Veterans of Foreign Wars, Making the presentation in Hoover's Washington office is V. F. W. Commander-in-Chief Joseph C. Menendez (right), of New Orleans.

#### Certified Irish Potato Seed Proves Worth To Grower

From one bushel of certified Irish potato seed, Howard Bradley, of Smithbridge township in Macon County harvested 20 bushels of potatoes, twice as much as from a bushel of uncertified seed.

#### Interesting Bits Of Business In The U.S.

First 150 industrial companies reporting earnings at three-quarter post of 1940 had a net, aggregate income gain of 31.9 per cent over same period of 1939. . . . Dun's Review barometer shows that in September "general business" was up 11 per cent in Florida, and 11.6 per cent in Iowa and Nebraska. . . . In Ohio, employment gained 8 per cent in September over previous year. . . . The "quiz rate", or percentage of employees voluntarily leaving their jobs because of opportunities elsewhere in August was 1.1 per cent; which doesn't sound very high, but it was higher than for any month since September of 1937—and will go higher as relative scarceness of skilled workers acts as boost to wages. . . . Retail sales volume indicates the draft is causing little or no curtailment in demand for retail goods.

#### Farm Families Of Warren Turning Out Mattresses

Low income farm families of Warren County are now turning out mattresses under the cotton surplus disposal campaign at the rate of 14 a day, reports Assistant Agent R. S. Smith.

### Plans For Cotton Referendum Are Made In This State

#### Growers Throughout Nation Will Vote On Issue December 7th

E. Y. Floyd, AAA executive officer of N. C. State College, has called upon county and community Triple-A committeemen and county farm agents to begin preparations for the cotton referendum which will be held December 7. Cotton growers throughout the Nation will vote at that time on whether they wish a marketing quota to apply to their 1941 crop.

Cotton marketing quotas have been in effect for the past three years. The 1940 quota was approved last fall by 91.2 per cent of the nation's growers. North Carolina farmers gave quotas a 89.8 vote of approval, 50,737 voting for quotas and only 5,767 voting against quotas.

"The secretary of agriculture declared a 1941 marketing quota in September," Floyd said, "when it was determined that the supply of American cotton on August 1, 1940, totaled 24,900,000 bales, or 137 per cent of the 'normal' supply. Under the Agricultural Adjustment Act a quota must be declared when supplies reach 107 per cent of normal."

"The national quota for 1941 is the same as the one in effect this year, and will make possible the marketing, through the quota program, of about 12 million bales during the year beginning August 1, 1941. This will mean that individual farm allotments will remain the same in 1941 as they were in 1940."

Floyd further pointed out that, with marketing quotas in effect, farmers who plant within their allotments may market without penalty all cotton which they produce in 1941. Farmers who overplant their acreage allotments or who have pen-

### Lime And Phosphate Aid Growth Of White Clover

Lime and phosphate are making for a better growth of white clover and blue grass in the pasture of C. W. Allen, a Yancey County farmer, thus crowding out the broomsedge, says Farm Agent R. H. Crouse.

alty cotton from a previous crop must pay a penalty of 3 cents per pound on all cotton marketed in excess of their farm marketing quotas.

**DR. V. H. MEWBORN**  
OP-TOM-E-TEST  
Please Note Date Changes  
Robersonville office, Scott's Jewelry Store, Tuesday, November 12. Williamston office, Peele's Jewelry Store, every Wed., 9 a. m. to 1 p. m. Plymouth office, Liverman's Drug Store, Every Friday, 10 a. m. to 4 p. m.  
Eyes Examined—Glasses Fitted Tarboro Every Saturday.

## HANES

UNDERWEAR

Sold By The

FOLLOWING FIRMS . . .

- Farmers Supply Co
- Belk-Tyler
- Darden's
- Martin Supply Co.
- Margolis Brothers

**Here's Royal's CARAMEL NUT CAKE**

Two smooth-textured, yellow layers, separated and topped with delicious Caramel frosting. It's light . . . rich . . . good. Ask your grocer for Royal's CARAMEL Cake.

**Royal CAKES**

ROYAL BAKING COMPANY • RALEIGH, N. C.

### Things To Watch For In The Future

University of Texas engineers have a fruit and vegetable quick-freezer to help farmers preserve their produce for an all-year market; they foresee "community" plants where produce can be quick-frozen and stored away under the grower's name, for releasing to market when demand situation is better. . . . Reducing candy, a special caramel; you eat one 15 minutes before a meal and it cuts your appetite for meat and potatoes, so the theory goes. . . . A home-use coffee extractor, in which you make your own coffee extract by a cold water drip method a whole pound at a time, then just mix the extract with hot water when you wish a hot cup. . . . A new household portable electric heater with this safety feature: it turns off automatically when tipped over.

#### Craven Cotton Crop Is Largest In Several Years

Craven County's cotton crop is the largest in years, due to no boll weevil attacks and the use of good seed, reports P. M. Cox, assistant farm agent of the State College Extension Service.

### Relief At Last For Your Cough

Creomulsion relieves promptly because it goes right to the seat of the trouble to help loosen and expel germ laden phlegm, and aid nature to soothe and heal raw, tender, inflamed bronchial mucous membranes. Tell your druggist to sell you a bottle of Creomulsion with the understanding you must like the way it quickly allays the cough or you are to have your money back.

**CREOMULSION**  
for Coughs, Chest Colds, Bronchitis

**"Now I'm unaware of underwear!"**

"Yes, sir . . . I'm telling you that Hanes mid-weight WINTER SETS are made for a man's comfort. You hardly know you've got them on! You're warm enough outdoors without sweating indoors. Easy to pull on and take off. . . . no buttons, draw strings or gadgets to fuss with. The all-round Lastex waistband s-t-r-e-t-c-h-e-s comfortably even if you've had a hearty meal. Another thing I like is the gentle athletic support of the Hanes Crotch-Guard."

Select one of the popular HANES WINTER SET styles. Your HANES Dealer will be glad to show them to you.

**HANES WINTER SETS 50c to \$1**  
THE GARMENT

Pick the set you like. Wear a sleeveless or short-sleeve shirt with a pair of Crotch-Guard Wind-Shields (figure at top) or Crotch-Guard Shorts (shown at left). All cotton (combed) or cotton-wool mixtures.

**BOYS' WINTER SETS 39c to 65c** THE GARMENT

**HANES HEAVYWEIGHT CHAMPION \$1 OTHERS, 89c to \$2**  
(at left) Ankle-length legs. Long or short sleeves. Knit to fit with full, accurate size. You can bend and stretch—without binding. Buttons, button-holes, cuffs and seams all sewed securely.

P. H. HANES KNITTING COMPANY, WINSTON-SALEM, N. C.

## Still Selling Tobacco

And we are having fairly large sales every day with prices as strong as any market in the state

ALL TOBACCO MARKETS WILL CLOSE

## Monday, Nov. 11th

TO OBSERVE ARMISTICE DAY

Our market will remain open for several days yet, so sell the remainder of your crop with the RED FRONT and CENTRAL WAREHOUSES in ROBERSONVILLE.

— We Have —

## FIRST Sale Tuesday

At The RED FRONT WAREHOUSE

JIM GRAY, ANDY ANDERSON and CHARLEY GRAY  
Props. Red Front & Central Whses. Robersonville

**CARSTAIRS White Seal**  
BLENDED WHISKEY

Price list:  
\$1.10 PINT  
\$2.15 QUART

FOR THE MAN WHO CARES

86.8 Proof, 75% grain neutral spirits. Carstairs Bros., Distilling Co., Inc. New York City

### Figure the Price Figure the Features Figure the Savings AND YOU'LL BUY CHEVROLET!

Price is important, of course . . . But most important of all is what you get for the price . . . Your own eyes and your own tests will tell you that you get the highest quality in the lowest price field when you get a new Chevrolet . . . That's why people have given Chevrolet leadership in motor car sales for nine of the last ten years!

**You'll Say "FIRST BECAUSE IT'S FINEST!"**

	CHEVROLET	FORD	PONTIAC
90-H.P. ENGINE	YES	NO	NO
CONCEALED SAFETY-STEPS	YES	NO	NO
VACUUM-POWER SHIFT AT NO EXTRA COST	YES	NO	NO
BODY BY FISHER WITH UNSTEEL TURRET TOP	YES	NO	NO
GENUINE KNEE-ACTION	YES	NO	NO
BOX-GIRDER FRAME	YES	NO	NO
ORIGINAL FISHER NO DRAFT VENTILATION	YES	NO	NO
TIPTOE-MATIC CLUTCH	YES	NO	NO

ONLY CHEVROLET HAS ALL THESE QUALITY FEATURES

Again CHEVROLET'S THE LEADER!

**Roanoke Chevrolet Company**