

### Why The World Is Not Flat When Seen By Human Eyes

Why does not the world appear flat, like a photograph, to human eyes?

We are able to judge the size of objects, distances, and to live in a three-dimensional world because of our knowledge gained from our visual experiences, says the Better Vision Institute. The size of an object, and its distance from the eye, are determined in a large measure by the changes in the muscles controlling the shape of the lens. For near objects the muscles bulge the lens; for distant objects they contract it. In childhood we learn from experience how to interpret these muscle changes. Sometimes, however, errors in visual judgment are made. A dragon fly moving closely to the eye, for example, may be mistaken easily for an airplane.

"Shadows and shading aid us in judging distances and to see objects in perspective and relief," says the institute. "In paintings and photographs we unconsciously interpret the flat surface in terms of depth because of the shadows."

**DR. V. H. MEWBORN OF-TOM-E-TRIST**  
Please Note Date Changes  
Robersonville office, Scott's Jewelry Store, Tuesday, February 11th.  
Williamston office, Peele's Jewelry Store, every Wed., 10 a.m. to 5 p.m.  
Plymouth office, Womble Drug Store, Every Friday, 10 a.m. to 4 p.m.  
**Eyes Examined—Glasses Fitted—Tartaroc Every Saturday.**

"Haze and dust in the atmosphere also assist the eyes. Because of particles in the atmosphere that diffuse light, far objects are less distant than near ones. City dwellers who go to the mountains are deceived at distances because of the clearer atmosphere.

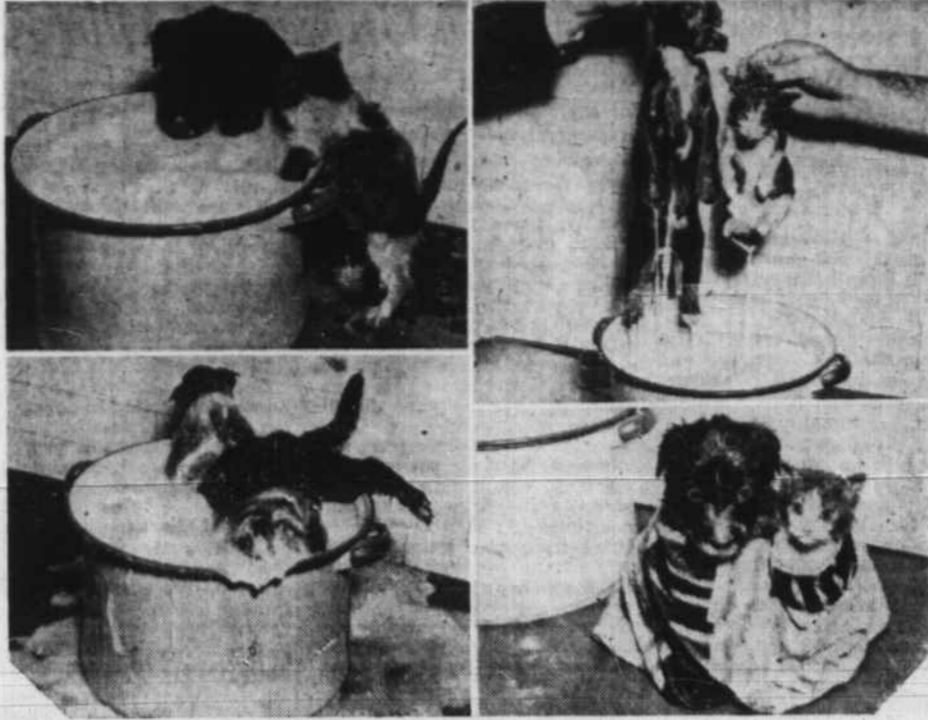
"Convergence of the eyes provides valuable clues for the creation of a three-dimensional visual world. Our eyes turn in slightly in focusing on an object," explains the institute. "For near objects they turn in more than for far objects. The fact that people are right-eyed or left-eyed also aids in judging distances. The muscles of the dominant eye will react more quickly than the muscles of the other eye. The tiny lag in time reaction is useful to the brain in making judgments."

"Perspective is also provided by the superposition of one object over the other. A near object will hide part of the form of a more distant object in the same line of vision. If a tree, for example, obscures part of the outline of a house, we know from experience that the tree is in front of the house."

"The two eyes of a person do not see exactly the same. They receive slightly different images which fuse into one in the brain. The old-fashioned stereoscope, in which each eye sees a different picture, well illustrates," says the institute, "how binocular vision creates visual depth. Each photograph in the stereoscope appears flat when viewed separately. When viewed together in the stereoscope, the result is a picture with three-dimensional depth."

"Seeing is a complex mental process, drawing heavily from memory and experiences of all the five senses," concludes the institute. "We have to learn from experience how

### A Puppy, a Kitten and a Bucket of Milk



Jack, the puppy, and Jill, the kitten with ancestry unknown, are the hero and heroine of these pictures. Finding a bucket of milk unattended in the Bide-a-Wee Home in New York City, they climb closer to the nectar, as shown, top, left. Then, ah—but you can see what happened, as shown bottom, left. The unhappy pair are rescued, top, right, and in the finale, bottom, right, they reflect on the fate which has left them sadder, wiser, and still hungry.

### Right-Hand Pitcher Has 'Southpaw' Eyes

The ball player most interesting to thousands of optical men in the United States is Paul (Dizzy) Trout, pitcher for the Detroit Tigers.

Because he is left-eyed, but pitches right-handed, he is regarded as somewhat of a scientific phenomenon in optical circles, reports the Better Vision Institute. Ordinarily "left-eyed" persons are also "left-handed," or in other words, they are "southpaw" all through the body.

"Dizzy Trout is unique in sports annals. In playing ball he suppresses his right eye and does virtually all his seeing with his left eye, but he pitches with his right hand," says the institute. "He is probably the only pitcher with left-eye dominance who is not a 'southpaw'."

to see correctly. For many months after birth the visual world of a child is limited. Depth of vision, which makes a three-dimensional world, is acquired only after considerable experience by the child."



### THE TERM "SCOTCH-IRISH" IS A MISNOMER.

"What's in a name?" has become a famous question, for many, many names are misleading. The Scotch-Irish are not a mixed race of Irish and Scotch ancestry.

The misnomer is of American origin, for it was applied to some immigrants that they might be recognized as a different group from those men and women who came directly from Scotland and from Ireland.

The compound name has a geographical rather than a racial meaning. The Scotch-Irish are a people whose blood is Scotch, although they came to America from Ireland. The story is an old one that goes back in English history to the time of Queen Elizabeth and the kings who followed her to the throne.

When Queen Elizabeth died and James came to the throne, Ireland was a thorn in England's side. There the inhabitants were poverty-stricken, rebellious; and above all they were Catholic. The British government was determined to break the power of the rival religious principles. King James planned to settle the northern province of Ireland, Ulster, by transferring the ownership of land to a Protestant population.

The king chose Scotch Protestantism to replace Irish Catholicism. The lands of Ulster were surveyed, and within a ten-year period more than 30,000 settlers from Scotland moved into that province.

The new inhabitants were one of the most industrious, law-abiding, and intelligent races in Europe. They were a proud people who maintained their habits, industry, religion and other traits as a separate culture from that of the Irish. Inter-marriage was almost unknown, and the two peoples remained two races. The frugal and industrious immigrants developed an economic prosperity favored by England. An act was passed to curb the manufacturing cities and the exports from Ulster. The wool growers and manufacturers were placed at the mercy of their English rivals. Their worship was greatly restricted. Political persecution followed.

No high-spirited, liberty-loving, energetic people would submit to such tyranny. Emigration by thousands was the answer to their economic and religious problems. From Ireland descendants of the Scotch settlers came to America. Many of these immigrants came to Carolina. In the new world they have been known as Scotch-Irish. These settlers have given the state of North Carolina more than one-fourth of our governors.

### Special Lenses To Protect The Eyes

Occupations with eye hazards are expanding rapidly under the national defense program, and to meet these new conditions thousands of workers are obtaining protective spectacles with hardened glass, recently developed in the United States, reports the Better Vision Institute.

"The new break-proof lenses, now being produced by several optical companies in this country, are suitable for use in hazardous occupations both for safety and for the correction of visual defects. In safety spectacles for persons with normal sight the glass is flat. For persons with visual defects the lenses are ground to the proper curvatures before hardening," says the institute.

"These new lenses, which will save thousands of defense workers for eye injuries, are made from special glass which is hardened by secret heat treatment. A steel ball can be dropped several feet on a lens made of such glass without breaking it."

### For "Union Now"



Chairman of Federal Union, Inc., Clarence K. Street is pictured at a "Union Now" dinner staged in New York's Waldorf-Astoria and attended by 2,000 persons. Speakers urged immediate federal union of the United States with Canada, the United Kingdom, Eire, the Union of South Africa, Australia and New Zealand.

### RESOLUTIONS OF RESPECT

Resolved, That the Farmers Mutual Fire Insurance Association of North Carolina, in annual session assembled at Raleigh, on this February 4th, 1941, go on record as expressing the deepest regret and sympathy to his family, in the loss of its long time counselor and valued friend, through the death of our Executive Committeeman, Mr. J. L. Coltrane, of Martin County, on December 29, 1940.

- John S. Watkins, Pres., Oxford, N.C.
- B. D. Stephenson, Vice Pres., Pendleton, N.C.
- Joe W. Barber, Sec. Treas., Raleigh, N.C.
- Executive Committee: T. Frank Parker, Raleigh, N.C.; M. L. John, Laurinburg, N.C.; W. H. Yarborough, Winston-Salem; Cicero H. Jones, Hillsboro, N.C.; S. E. Coltrane, Guilford College, N.C.

### NOTICE

North Carolina Martin County, In The Superior Court, County of Martin against M. O. Fouts.

The defendant, M. O. Fouts, above named, will take notice that an action entitled as above has been commenced in the Superior Court of Martin County, North Carolina, to foreclose the taxes on land in Martin County in which said defendant has an interest; and the said defendant will further take notice that he is required to appear before L. B. Wynne, Clerk of the Superior Court of Martin County at his office in Williamston, N. C., within thirty (30) days after the completion of this service of publication by notice and to answer or demur to the complaint of the plaintiff in this action, or the plaintiff will apply to the Court for the relief demanded in said complaint.

This the 4th day of Feb., 1941.  
L. B. WYNNE,  
Clerk Superior Court of Martin County.

### NOTICE OF SALE

Under and by virtue of the power and authority vested in the undersigned Mayor of Williamston by a resolution duly adopted by the Board of Commissioners of the Town of Williamston on the 3rd day of February, 1941, acting under the laws of North Carolina as provided for in Section 2588 of the Consolidated Statutes of North Carolina, the undersigned will on the 8th day of March, 1941, at 12 o'clock noon, at the courthouse door in Martin County offer for sale at public auction for cash the property described as follows:

Being a part of Lots No. 12 and No. 13 adjoining lot No. 14 of the Watts Grove property, having 65 feet frontage on Williams Street and adjoining the lands of A. J. Manning and the house which was formerly occupied by Raymond Cherry, as shown by map of same in the Register's office of Martin County in Land Division Book No. 1.

This the 5th day of Feb., 1941.  
J. L. BASSELL,  
Mayor of Town of Williamston, Coburn & Coburn, Attys. 17-41

**NOTICE**  
North Carolina, Martin County. In The Superior Court, County of Martin against Nellie A. Miller and others.

The defendants, Nellie A. Miller and husband, Perry J. Miller, Paul Kear, Carlton R. Kear, Helen L. Slicker, Georgia K. Longwell and M. O. Fouts, above named, will take notice that an action entitled as above has been commenced in the Superior Court of Martin County, North Carolina, to foreclose the taxes on land in Martin County in which said defendants have an interest; and the said defendants will further take notice that they are required to appear before L. B. Wynne, Clerk of the Superior Court of Martin County at his office in Williamston, N. C., within thirty (30) days after the completion of this service of publication by notice and to answer or demur to the complaint of the plaintiff in this action, or the plaintiff will apply to the court for the relief demanded in said complaint.

This the 4th day of Feb., 1941.  
L. B. WYNNE,  
Clerk Superior Court of Martin County.

**NOTICE OF SALE**  
Under and by virtue of the authority contained in that certain Deed of Trust executed to the undersigned Trustee on the 25th day of February, 1936, by J. S. Ayers and wife, Mary Ayers, said Deed of Trust being of record in the Public Registry of Martin County in Book P-3, page 73, said Deed of Trust having been given to secure certain notes of even date and tenor therein, and the stipulations therein contained not having been complied with, and at the request of the parties interested, the undersigned Trustee will on Monday, the 10th day of March, 1941, at 12:00 M., in front of the Court House door in the Town of Williamston, North Carolina, offer for sale at public auction to the highest bidder for cash, the following described real estate: A house and lot in the Town of Hamilton, N. C., on the East side of

Front Street, adjoining the lands of F. L. Haislip and S. D. Matthews, and more fully described by reference to Book X-2 at page 34, and being the same premises conveyed to the said May Ayers by Deed from T. B. Slade, Jr., Trustee.

This the 4th day of Feb., 1941.  
WHEELER MARTIN,  
Trustee.

**\$1.10 PINT**  
**\$2.15 QUART**

**CARSTAIRS White Seal**  
Blended Whisky  
For the Man Who Cares

86.8 Proof. 75% grain neutral spirits.  
Carstairs Bros. Distilling Co., Inc.  
New York City

**Reita Theatre—Washington**

Sunday-Monday February 9-10  
**"MARGIE"**  
with Nan Grey, Tom Brown and Mischa Auer

Tuesday February 11  
**DOUBLE FEATURE**  
"Straight Shooters," with Tim McCoy  
"On the Spot," Frankie Darro and Mary Kornman

Wednesday-Thursday February 12-13  
**"NEXT TIME WE LOVE"**  
with Margaret Sullivan and James Stewart

Friday-Saturday February 14-15  
**"UNDER TEXAS SKIES"**  
with the Three Mesquiteers

**WESTERN UNION**

ZK12 15=STLOUIS MO DEC 18 60\*  
DODGE BROS CORP=DET=

FLOATING POWER AND FLUID DRIVE  
MAKE DODGE RIDE SUPREME\*

REV O W HEGGEMIER  
522 E 8TH ST ALTON ILL.

**WESTERN UNION**

ZK117 20 DL=LOSANGELES CAL JAN 7  
DODGE BROS CORP=DET=

NEW FLUID DRIVE MOST OUTSTANDING  
FEATURE OF 1941 DODGE. ITS EFFORTLESS  
OPERATION MAKES DRIVING A PLEASURE.  
NEW BODY DESIGN BEAUTIFUL.

E M SLAUGHTER.

**WESTERN UNION**

ZK145 8=BA BROOKLYN NY JAN 16 228P  
DODGE BROS CORP=DET=

TWO MINUTE DEMONSTRATION SOLD ME  
ON FLUID-DRIVE\*

HOWARD F KASTNER.

**WESTERN UNION**

ZK7 21 NT=KIRKWOOD MO JAN 9 929A  
DODGE BROS CORP=DET=

AM CRAZY ABOUT MY 1941 DODGE.  
HANDLES LIKE SOFT VELVET, DODGE  
HYDRAULIC BRAKES AND LARGE WINDOW  
AREA ARE REAL SAFETY FEATURES\*

G L EICKKORN.

**THINK OF IT!...DODGE PRICES START AT ONLY**

**\$825<sup>†</sup>**

FOR THE BIG LUXURY LINER DE LUXE COUPE

(† This is Detroit delivered price and includes all Federal taxes and all standard equipment. Transportation, state and local taxes (if any), extra. See your Dodge dealer for cash budget terms.)

Prices subject to change without notice

**1941 DODGE**  
WITH OR WITHOUT FLUID DRIVE\*

**\*FLUID DRIVE ONLY \$25 EXTRA!**

Tune in on Major Bowes Original Amateur Hour, Columbia Network, Thursdays, 9 to 10 P. M., Eastern Standard Time.

**START THE DAY RIGHT**

**MAKE COFFEE Electrically**

Manning-Bowman Percolator **\$6.95**  
ONLY 95c DOWN

Manning-Bowman Percolator **\$9.50**  
ONLY \$1 DOWN

Sunbeam Coffeemaster **\$16**  
ONLY \$1.50 DOWN

Eight-cup Electric Percolator as sketched above, in non-tarnish, lustrous chromium, with solid walnut handle. All inside parts of pure aluminum; lining of easy-to-clean chromium.

Distinctive design in smart chromium finish and trimmed with ivory Arinite, as illustrated above. Capacity, 8 cups; with all the superior Manning-Bowman features.

100% automatic. Set it and forget it. After coffee is made it automatically sets itself to keep it hot. It's as simple as A-B-C. Made of unbreakable gem-like chromium plate and trimmed with jet-black Bakelite.

**YOUR ELECTRICAL DEALER . . . . . or VIRGINIA ELECTRIC AND POWER COMPANY**

**DIXIE MOTORS, Inc**  
WILLIAMSTON, NORTH CAROLINA