

Size Of Farms Has Been Increased In The Cotton Region

Mechanization Favors Expansion: Trend Is Toward Day Labor

The Cotton Belt has in recent years seen a marked increase in the size of plantations and a shift to wage labor at the expense of tenants. These findings appear in a study just released by the WPA, "The Plantation South, 1934-1937." This study surveys 246 typical plantations with 4,000 resident tenant and laborer families.

The increase in size of plantations was accompanied by a rise in the acreage devoted to cotton. The average cotton yield jumped 70 per cent from 1934 to 1937, an increase that cannot be explained by climatic changes alone.

Although the number of tractors per plantation increased by about 50 per cent from 1934 to 1937, mechanization continues to be comparatively slight. The number of resident families per tractor on the plantations dropped from 25 to 18.

At the same time the cropland operated by wage laborers rose from 36 to 41 per cent from 1934 to 1937. Of the total cropland operated by wage laborers, the proportion planted to cotton rose from 22 to 36 per cent.

Although plantation size and area devoted to cotton increased, the average number of resident families per 1,000 acres of cropland decreased from 36.5 to 34.2 during this period. This decline took place among renter, share tenant and cropper families per 1,000 acres increased very slightly.

Considerable space is devoted by the WPA study to the problem of income on the plantation, but no information is supplied on the income of wage laborers and their families although these operated over two-fifths of the cropland in the latter year.

Gross cash income per plantation rose 41 per cent between 1934 and 1937. Nevertheless, gross cash income of croppers and share tenants rose only 16 per cent in the same period and was only \$385 in the latter year.

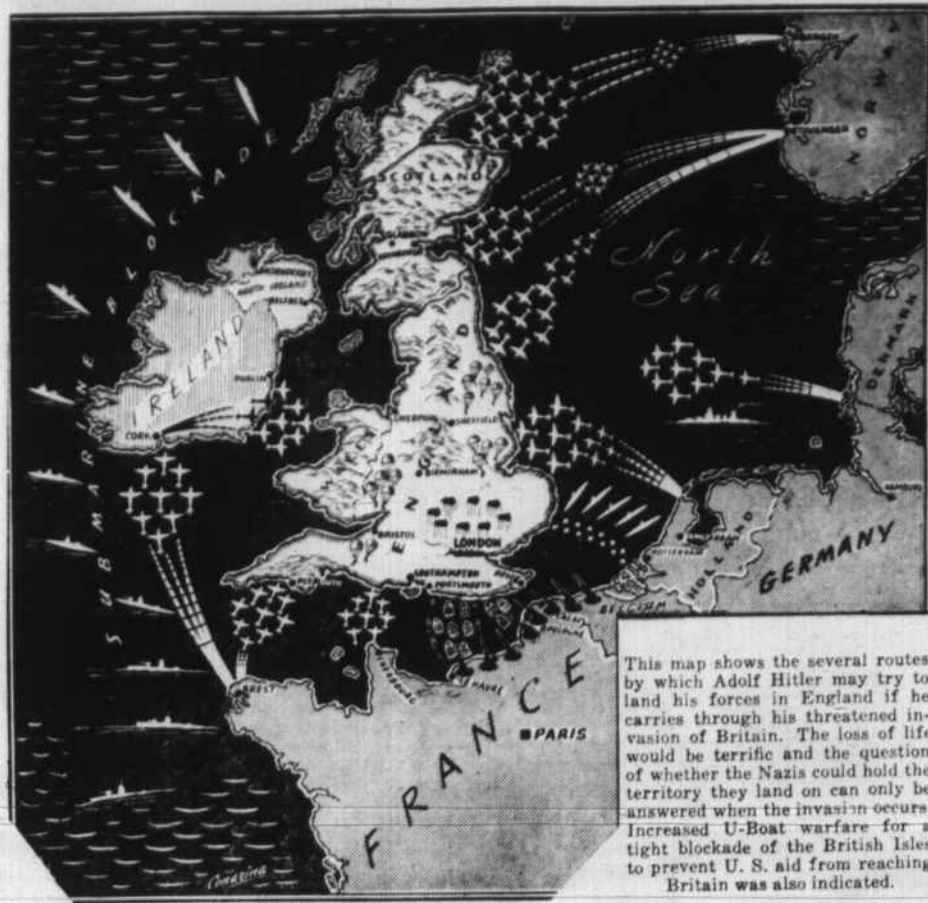
The failure of tenant income to keep pace with planter income has a number of causes. One is the fact that the planter is the marketing agent for the cropper. "In eating as the marketing agent, the operator may exercise his prerogative by selling the product at once or holding part or all of the crop for speculative purposes. In either case, he credits the tenants' accounts for the product at prevailing market prices, at the time of settling in the autumn."

Net cash income of planters rose 42 per cent, even more than gross income, whereas net cash income of croppers and share tenants rose 14 per cent, or less than gross income, reaching only \$300 in the latter year. On 14 per cent of the plantations studied, even with 12-cent cotton in 1937, "cropper and other share tenant net incomes were less than \$200, including home-use products" (valued at about \$100). "In 1938, with 8-cent cotton, the proportion of such tenants having less than an adequate amount of money to carry them through the winter was at least 35 per cent of the total or from 350,000 to 400,000."

Part of the low income of croppers and tenants is due to the very unfavorable leasing arrangements forced on them, part to the practice of subsistence advances charged against their accounts by what the croppers call "the bossman's crooked pencil." Part is also explained by the interest rates which the planters charge the croppers for advances.

In 1937 subsistence was advanced to tenants for an average of 3.4

Possible Routes of Hitler's Promised 'Knockout'



This map shows the several routes by which Adolf Hitler may try to land his forces in England if he carries through his threatened invasion of Britain. The loss of life would be terrific and the question of whether the Nazis could hold the territory they land on can only be answered when the invasion occurs. Increased U-Boat warfare for a tight blockade of the British Isles to prevent U. S. aid from reaching Britain was also indicated.

Crisis Flares in the Orient



Americans in Japan, China and Indo-China have received renewed, urgent notice to leave the Far East as a sudden crisis flares in the Orient. A Japanese battle fleet was said to be concentrated off Hainan, Indo-China, with other Jap warships off Bangkok, and new Japanese demands on the Dutch East Indies, Siam and Indo-China were reported. Dutch merchantmen in the Far East were ordered into harbor.

Business Continues At A Rapid Pace

While war drums beat louder with Nazi thrust to Balkans and Japan's movements in Far East, the hum of drill, lathe and saw in the United States matches the crescendo as the re-arming and "building an arsenal for democracy" drive goes forward at an ever faster pace. Practically every business index continues to reflect that progress. Plant-expansion contract awards by Army and Navy for January are an example: They totaled \$375,685,332 worth — more than half as much, in that one month, as the total for the final seven months of 1940. Highlights of recent construction awards give an idea of where and "what for" some of the chunks of this money are going. Ordnance depots, at around \$8,000,000 apiece, for Anniston, Ala., Fort Wingate, N. M. and Hermiston, Ore. . . . New \$10,000,000 aircraft manufacturing and assembly plant for Omaha, Neb. . . . An additional \$6,000,000 was allocated for additional construction and operation of an ammunition-loading plant at Ravena, O., bringing the total awards for this particular project up to better than \$48,000,000.

Two Stores Listing Hardware Specials

With spring at hand and with greatly enlarged stocks, Williamston's two hardware stores will play a prominent role during dollar days the last three days of this week.

Recently purchasing the stock, good will and fixtures, George Harris, Jr., is already prepared to cooperate 100 per cent in the special trade event.

The Woolard Hardware Company, under the direction of Jodie D. Woolard, is cooperating on a greater scale than ever before.

4-H Boys Will Produce About 300 Broilers In '41

A large number of Franklin County 4-H Club boys are making preparations to produce from 100 to 300 broilers this year, according to Edwin P. Barnes, assistant farm agent.

Unusual bargains are being offered by both stores, and the wise shopper who would be prepared for action on the farm and in the garden and yard will certainly want to visit these stores and equip their tool houses with standard equipment. The stores are anticipating the exacting customer's needs in paints, varnishes and every conceivable hardware item.

'Dollar Days' Values At Harrison Shoppe

The Harrison Shoppe, located next to the post office on Main Street, is directing a strong appeal to exacting shoppers for Williamston's big semi-annual dollar days. Handling nationally-advertised merchandise, the shoppe is making golden opportunities available to those who would get the very best at advantageous prices. See the latest in styles and take advantage of the special prices in effect at the Harrison Shoppe during dollar days in Williamston.

DAVIS SPECIALS

- 75c CREOCOD 68c
- 60c Mouth-Wash and Tumbler . . . 49c
- 1.50 Dot Perkins Cleansing Cream \$1.
- Russian Mineral Oil 39c pt. 69c qt.
- Dayol-Hot Water Bottles and Fountain Syringes, 2-yr. guar. . . 89c
- Modess or Kotex 20c
- 40c Castoria 34c
- Cashmere Bouquet Soap, 4 bars . . 26c
- 50c Ipana Paste 39c
- 50c Hinds Cream 39c
- 1.20 Syrup Pepsin 97c
- Prophylactic Tooth Brushes (New Nylon) 23c
- 50c J. and J. BABY TALC 39c
- (75c value)—25c Pepsodent Paste or Powder, and 50c Tooth Brush . 48c
- 40c Squibb DENTAL CREAM . . . 34c
- 25c Squibb DENTAL CREAM . . . 19c
- \$1.00 value—Shaving Cream, Lotion, Double-edge Blades . . . 59c
- 500 Venida Facial Tissues 25c
- Quart Norwich Milk Magnesia . . . 69c
- 4 rolls Blue-Kross Tissues 25c
- Two 25c Lifebuoy Shaving Cream 33c
- Penslar Castoria 24c
- 15c Putnam Dye 10c
- 50c Jergens Lotion 39c
- 35c Bromo-Quinine 29c
- 10c Lux Soap 2 for 15c
- 50c S. & D. Milk Magnesia 39c
- Pint Rubbing Alcohol . 19c
- (\$1.50 value)—75c Lucky Tiger Shampoo and 75c Hair Tonic . . . 69c

PHONE US FOR PROMPT DELIVERIES — 25 for Soda — 26 for Drugs. NO CHARGE FOR CUPS AT OUR FOUNTAIN — COME IN AND ENJOY A DELICIOUS FOUNTAIN COCA-COLA — MADE JUST THE WAY YOU LIKE IT — With orange, with lemon, semi-sweet, lots of ice or little ice. A Fountain COCA-COLA is a "tailor-made" drink—We'll make it to suit your own individual taste.

Davis Pharmacy



Thurs., Fri., Sat., March 6-7-8 — Williamston

1L BEST GRADE SHEETING \$1.00 59c Children's DRESSES 2 for \$1 Five 25c TOWELS \$1.00 Ladies' Spring HATS \$1.00 Announcement! CURITY BABY DIAPERS At DARDEN'S STORE	EASTER DRESSES Priced From \$2 to \$5 Ladies' Spring SWEATERS \$1.00	5 Pairs HANES SHORTS \$1.00 Five HANES SHIRTS \$1.00 5 prs. Bachelor Friend SOX \$1.00 E. and W. DRESS SHIRTS \$1.00 \$1.00 OFF on MEN'S SPRING SUITS During DOLLAR DAYS	Ladies' Quadriga SMOCKS \$1.00 \$1.00 OFF ON ANY LADIES' SPRING COAT SOLD FOR CASH During DOLLAR DAYS	WEMBLEY NOR-EAST NON CRUSH SPRING TIES \$1.00 Ladies' Quadriga PRINT DRESSES \$1.00 Ladies' Quadriga HOUSE COATS \$1.00 LADIES' SLIPS \$1.00 China Tickets ARE STILL GOOD. SAVE THEM!
---	---	---	---	---

Darden's Department Store



10 QUARTS
 100 per cent Pure
MOTOR OIL
\$1.00

- 6 quarts 100 1/2 Pure Pennsylvania MOTOR OIL \$1.00
- One Set (6) END WRENCHES \$1.00
- FORD V-8 PISTONS and PINS Fitted Sets of 8 — EACH . . . \$1.00
- Ignition Coil for Model A Ford \$1.
- SPEEDOMETER CHAIN and HOUSING, Complete, Model A Ford . . \$1.00
- Electric Iron, guaranteed 1 yr. \$1.00
- 7 MAZADA LIGHT BULBS—30 to 100 Watt — SPECIAL . . . \$1.00
- 1 Can SIMONIZ-CLEANER 1 can SIMONIZ WAX and 5 Yds. POLISHING CLOTH, All for **\$1.00**
- Eight-Cup PERCOLATOR, for \$1.00

WESTERN Auto STORE
 W. J. MILLER WILLIAMSTON