

FIRST AERIAL PHOTO TO SHOW UNCLE SAM GUARDING PANAMA CANAL.

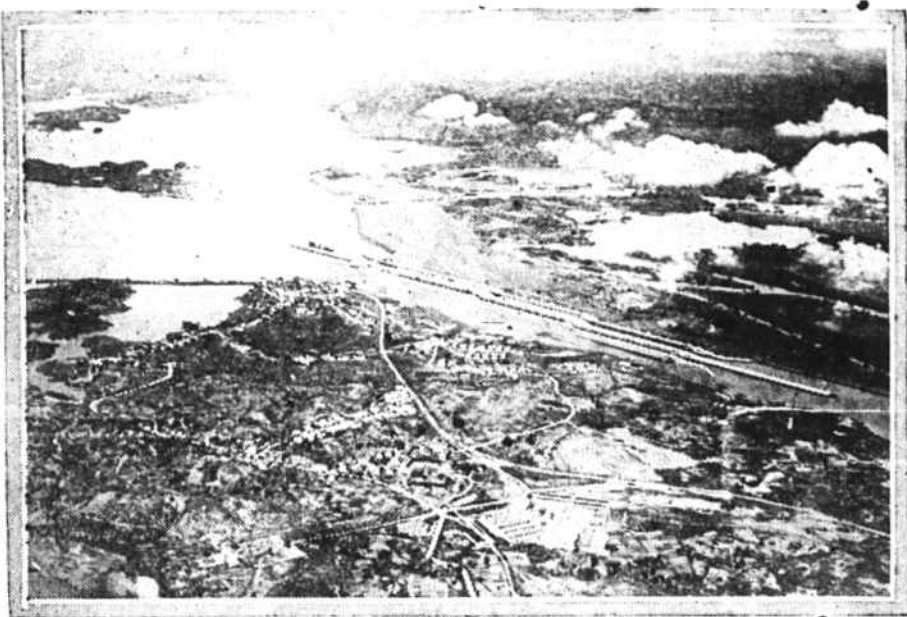


Photo shows an unusually clear photograph, showing the entrance to the Panama Canal, Limon Bay and the city of Colon. France Field, the army air base, is seen in the foreground.

## Christmas Eve Caroling Observed In 1,154 Cities

Survey by the National Bureau for Advancement of Music Shows Wonderful Growth of Delightful Old Yuletide Custom from a Total of Only 31 Cities in 1918

New York, November 15 — From a traceable total of thirty in 1918 the number of cities and towns in the United States that observe the fine old custom of outdoor Christmas caroling had increased in 1922 to 1,154, according to an elaborate survey just issued by the National Bureau for the Advancement of Music from its offices in New York. It is expected that Christmas of now less than two months away, will be greeted by merry carolers in close to 2,000 communities in every State in the Union.

The survey of convenient size and appropriately printed in green and red in the Yuletide spirit, is headed "Christmas Caroling in 1922." A short history of outdoor caroling in the United States as revealed in the bureau's records is given, followed by a map of the United States, on which, in red, is indicated all towns and cities in which caroling groups sang throughout the streets, in parks, public squares, etc., in December 1922. Following that is a printed complete list, alphabetically arranged according to the bureau's records, the custom was observed last year.

"Ten years ago," says the Advancement Bureau in its survey, "outdoor Christmas Eve Caroling, especially by itinerant groups through the streets of town and village, was almost unknown in this country. The beautiful old custom that had once been universal in England had all but died."

"The widespread adoption of the Community Christmas Tree did much to bring the carols to public attention again. Yet the singing of the charming old Yuletide songs for the public benefit was all too infrequent and the general absence of the 'waits,' the traveling bands of carolers, in their picturesque red cambrie capes, was particularly regrettable."

"The National Bureau for the Advancement of Music, which is interested in extending more widely the influence and utilization of music among the American people, saw in the Christmas caroling one of the most inspiring uses of song, as a satisfaction to the singer, a joy to the community, and a means of expressing the Christmas spirit. In 1917, therefore, shortly after its own inception, the Bureau, at the suggestion of C. A. Grinnell of Detroit, began working actively for the country-wide expansion of the custom. It pointed as a model to the splendid organization for Christmas singing that has been worked out on a city wide scale in Detroit. As a further aid to the movement the Bureau issued its booklet, 'Christmas Eve Caroling Being Revived,'

giving a brief outline of the history of the custom and instructions for procedure to those interested in carrying out the plan locally.

"By this time the movement had made considerable advance, and in the first edition of the booklet, a year after efforts were made to revive the movement, 30 cities and towns in which the outdoor caroling had been introduced were included. There were undoubtedly more than this number, but the Bureau had not full facilities for tracing them. By the time the second edition was published in October 1920, the list was more than trebled and it has continued to grow with astounding rapidity ever since, as the following figures taken from the bureau's record will show:

- 30 cities and towns Dec. 1918.
  - 110 cities and towns Dec. 1919.
  - 330 cities and towns Dec. 1920.
  - 667 cities and towns Dec. 1921.
  - 1154 cities and towns Dec. 1922.
- "The total for 1922 does not include 200 cities and towns in the



The safe deposit box of every wealthy man, when opened by his heirs, usually discloses some "cats and dogs" among his investments. A life insurance policy in the Equitable, however, is always worth 100 Cents on the Dollar at maturity.

**THE EQUITABLE**  
LIFE ASSURANCE SOCIETY  
of the UNITED STATES

**ALVIN T. HALEY**  
SPECIAL AGENT  
214-215 Hinton Building  
ELIZABETH CITY, N. C.

previous surveys from which no reports were received as to 1922. Undoubtedly a large percentage of

high at any price

Substitutes are generally more expensive in the end than genuine articles. Housewives have learned—they KNOW this is true where bakings are concerned.

Self rising flours are classed as substitutes for plain flour and good powder. The use of these special mixtures is very liable to result in false economy, failures and waste on bake day.

Remember there is a big difference, in many ways, between biscuits and other bakings made from these so-called self-rising flours and those made from good plain flour and a dependable leavener. Try the experiment—make a baking from each—convince yourself.

You will find the baking made from flour and baking powder far more attractive in appearance. It will raise higher—retain its full food value and taste better. For best results, do not fail to use Calumet, the Economy Baking Powder, and a reliable brand of plain flour.

Just think of it—the sale of Calumet is 2½ times as much as that of any other brand. It contains only such ingredients as have been officially approved by the United States Food Authorities. It is pure and sure.

You save when you buy it—you save when you use it.

PACKED IN TIN  
—KEEPS STRENGTH IN

them observed the custom.

"The response of the public scattered from coast to coast and from the Canadian border to the Gulf of Mexico, furnishes convincing evidence that the outdoor Christmas caroling has struck a popular cord and fulfills a popular desire.

"Some of the cities were large, others small. Some had caroling groups enough to cover the entire area, others for but one or two districts; while in still others carols were sung around the Christmas tree only. The information was gathered from newspaper clippings from all parts of the country, as well as by direct correspondence, and it is probable that many cities were overlooked. No pieces were included where the caroling was simply an indoor or church event."

New York led all states in the number of towns and cities reported as having observed the caroling custom in 1922. Its total was 111. Pennsylvania was second with 93, Massachusetts third with 86. California had 85, Illinois 71, Ohio 56, New Jersey 54, Georgia 50.

Every state in the Union is recorded in the list at the end of the survey. The District of Columbia and Alaska also appear.

The number of annual observances, as indicated by the list, run from one to five. Detroit, Michigan, is the only city recorded as having had five observances.

Communities that are taking up Christmas caroling this year for the first time can get full information in regard to the custom from the National Bureau for the Advancement of Music, 105 West Fortieth street, New York City.

# PENDER'S YELLOW FRONT STORES

Cash and Carry Economy Grocery Bulletin  
LOOK FOR THE YELLOW FRONT

SALT RIB PORK, for seasoning, lb. 15c

QUAKER'S or MOTHER'S OATS, pkg. 10c  
D. P. OATS, 3 pkgs. for 25c

D. P. COFFEE, 1 lb. sealed pkg. 33c  
Packed in double lined, germ and dust proof sanitary bags. Saving over the costly decorative tin containers from 4c to 8c per pound.

CITRON, fancy drained, lb. 60c  
ORANGE or LEMON PEEL, lb. 30c  
ATMORE'S MINCE MEAT, lb. 21c  
BRAZIL NUTS, lb. 20c

PLUM PUDDING, N. B. C. Individual can 8c  
Libby's, No. 1 can 25c No. 2 can 43c

COCOA, D. P. Brand, ½ lb. can 15c  
We respectfully request you to try this COCOA.

GINGER ALE, Gosman's, 16 oz. bot. 12½c  
D. P. PEAS, Extra sifted, fine flavor, can 27c  
VINEGAR, D. P. 16 oz. bot. 12c qt. bot. 19c  
½ gal. 35c gallon 68c

MACKEREL, extra large white, each 10c

D. P. EGGS, selected, doz. 42c  
Extra selected in cartons 45c  
We pride ourselves on the quality of our eggs. Large fancy stock. Every one guaranteed.

SHOE POLISH, 2-in-1, all colors, can 10c

SWIFT'S PREMIUM MILK, Empire Brand, Hams, lb. 29c tall can 10c

FLOUR 12-lb. 24-lb. 48-lb. 98-lb.  
Wonder Self Rising 45c 33c 81.65 83.25

OLD DUTCH CLEANSER, 4 can for 25c

D. P. CAKE, Choice of Pound, Layer or Raisin, lb. 25c  
We recommend this cake to our customers for its very superior quality.

# SOY BEANS

We are in the market for soybeans all the time. For the past two years, by boosting the markets, we have made it possible for the farmers to realize an average of 40 cents per bushel more than they would have gotten otherwise. It is our policy to help the market all we can at all times. Before selling—SEE US.

**Brock & Scott Produce Company**

PHONE 184 BURGESS STREET

# FORD

We can make immediate delivery on all types of Ford Cars.

**Auto & Gas Engine Works**

C. W. GATHER, Pres.  
105 N. Water Street. PHONE 233

# The Right Place to Buy Stoves, Ranges, Heaters

STANDARD MAKES, LARGER LINES, LOWER PRICES  
BETTER SERVICE.

**Quinn Furniture Company**