

# Christmas Boxes For Six Years On Board The Ice-Bound Maud

By NEA Service  
Nome, Alaska, Dec. 24.—Some of the men on the schooner Maud...

Isolated helplessly by the polar ice, so isolated from civilization that no help can reach them...

Their leader, Captain Roald Amundsen, famous Arctic and Antarctic explorer, is back in the United States, having temporarily abandoned his proposed airplane flight across the north pole.

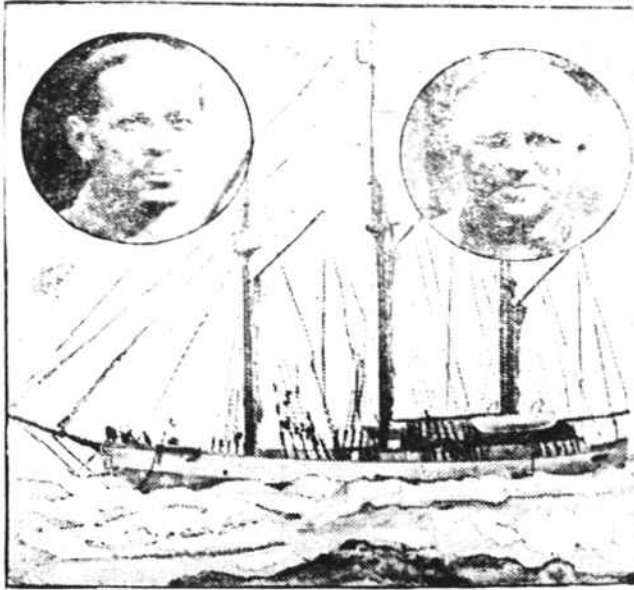
**A Polar Christmas**  
If ever there were a dreary setting for Christmas Day, it is the one of maddening cold and trackless ice wastes surrounding the crew of the 260-foot schooner Maud...

But they will have their Christmas just the same; they are not to be denied this one day of celebration, this clinging remnant of an almost-forgotten world...

Imagine, then, that it is Christmas on board the Maud. Inside the little, gaily decorated cabin sit half a dozen men, eagerly watching Captain Oscar Wisting, their present leader and Prof. H. V. Sverdrup, scientist of the expedition.

In front of Captain Wisting is a huge box marked, "To be opened Christmas Day, 1924." The captain pries open the lid while the men look on expectantly.

First, and best of all, there are



THE SCHOONER MAUD. ABOVE, PROF. H. V. SVERDRUP (LEFT) AND CAPTAIN OSCAR WISTING.

letters from the loved ones at home—letters that have been lying in that box for more than a year and a half, which, nevertheless, are seized eagerly and read avidly, and bring unashamed tears to their eyes.

**Presents for All**  
And, separately wrapped, are presents for each of the crew. From the family, from friends and from kind-hearted Norwegians and Americans who were let in on the secret and insisted on contributing.

So the letters are read and the presents are distributed, and the crew then sits down to its Christmas dinner.

But that is not all. Shut off though they are, they are, within reach of the wireless that probes the ether for them regularly from the Norwegian coast.

The Maud's big radio will be kept busy this Christmas Day receiving

and sending greetings between the firesides in Norway and the frozen wastes at the top of the world.

When men, cut off from the world as these are, with no assurance of

**A Sterling Silver Pencil for \$1.50.**

This value cannot be duplicated. Full line of Eversharp Pens and Pencils.

All pencils engraved free by our Expert Engraver

**LOUIS SELIG**  
Leading Jeweler

**Franc and Lebanon Belle Flour**  
are absolutely finest in quality sold by the leading grocers.  
—Distributed By—  
**A. F. TOXEY & COMPANY**  
Water Street.

**A MERRY Christmas**  
May this be the happiest of all for you and yours is the wish of the—  
**Auto & Gas Engine Works, Inc.**

## FOREIGN BORN POPULATION—INCREASING IN SOUTHWEST

Washington, December 24.—The center of foreign-born population of the country is located in Allen County, Indiana, 19.8 miles east of New Haven, having taken a south-westward trend after two decades of southeastward movement.

"The change in direction of the movement of this center, from east to west is due principally to the increase in foreign born white population in the State of California," says the Bureau. "The total increase in the foreign born white population of the United States was 367,209 and the increase in the states of Texas, California and Arizona was 316,222 or 86 per cent of the total increase."

## ENGINEERS CONTRACT FOR BIG SKYSCRAPER

Cleveland, Dec. 24.—The contract for the new Brotherhood of Locomotive Engineers \$4,000,000 29-story office building, at the southwest corner of St. Clair avenue and Ontario street, has been awarded and the work of wrecking the building now on the site is under way. The contract calls for completion of the work in 16 months.

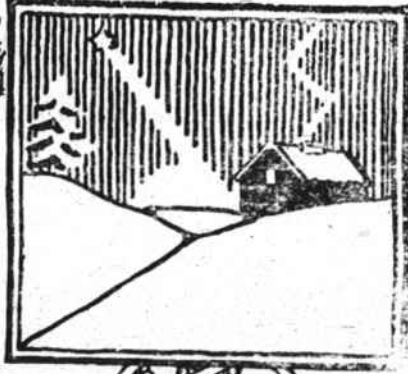
The Brotherhood Building Company will construct the building. It will be of steel, with white exterior, similar to the present engineers building on the opposite corner, which is owned by the Brotherhood of Locomotive Engineers.

**ARIDOR**  
Candy Caddy

The jar alone has a retail value of \$1.25 and is a practical necessity in the home.

Your druggist or grocer will deliver you a caddy with 2 pounds of

**Weatherly's**  
high grade candies for \$2.  
At this price you get two pounds of candy for practically the cost of one.



# Christmas Thoughts

May your Christmas Day be one long to be remembered in the coming years, because of its cheer and happy friendship; and may the New Year of 1924 be one of brightness and sunshine undimmed by the sorrows of tears—

**OLIVER F. GILBERT**

For MITCHELL'S DEPT. STORE  
PEOPLES BARGAIN STORE  
GILBERT'S BARGAIN SHOP

