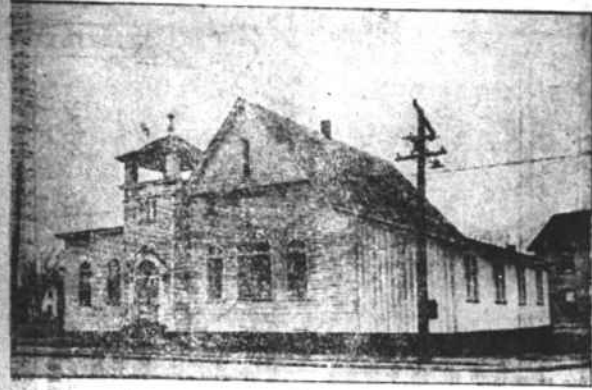


CALVARY BAPTIST CHURCH



REV. R. F. HALL

Calvary Baptist Is The Youngest City Church

For Number of Years Sunday School Was Held in Little Chapel, Then Rev. R. F. Hall Volunteered Without Pay, and a Real Church Was Organized

The youngest church in Elizabeth City is the Calvary Baptist on Riverside Drive, which was organized April 19, 1921, with 19 charter members. This membership has now grown to about 100.

The organization of this church was largely the result of many years of faithful and efficient effort on the part of members of Blackwell Memorial Baptist Church of this city. A Mission Sunday School was conducted in the present building, which has since been enlarged, every Sunday afternoon for many years, with E. F. Aylett, S. S. Davis and C. J. Ward, assisted by women members of Blackwell Memorial, as leaders.

The Sunday School grew until tired of a preaching service was felt and it was then that Rev. Romulus F. Hall, already in the city and serving two rural churches, consented to preach at the mission each Sunday night. This church was organized, Mr. Hall served this mission without compensation and at its organization was formally called and still serves as pastor. Since that time a \$2,500 annex has been added to the building. Last year Calvary Baptist Church raised about \$2,000 on building debt and current expenses.

The two country churches of which Rev. Mr. Hall is pastor are Berea and Corinth, near this city, both having preaching

ten C. Davis.

The following have served as pastors since 1900: J. B. Ferber, D. P. Harris, W. E. West, P. S. C. Davis, W. R. Haight, C. Roy Angell and R. F. Hall.

Mr. Hall has been pastor of Berea since June, 1919. Under his pastorate Berea has completed an annex with eight modern Sunday school rooms. Berea has preaching service every Sunday morning at 11 o'clock.

Corinth Baptist Church is situated on the concrete road which is a part of the State Highway from Elizabeth City to Edenton and is only two miles from the heart of Elizabeth City. This church was organized in 1891 with 17 charter members and now has a membership of 297.

Here also Mr. Hall has served as pastor since 1919. Corinth has a fine Sunday School with an average attendance of about 200, a woman's Missionary Society, a Sunbeam Band, and two B. Y. P. U.'s. Corinth is now planning to build 18 modern Sunday School rooms to meet the growing needs of the church. The preaching service is held every Sunday afternoon at 3:15 o'clock.

Rev. R. F. Hall was born in Sampson County in 1890 and was educated at Wake Forest College and at the Baptist Theological Seminary at Louisville, Kentucky, receiving his A. B. degree from Wake Forest in 1918 and completing his course at Louisville in 1919. The same year he married Miss Bessie Stanton of Rowland and there are two children, Edith and Horace Douglas.

In addition to his duties as pastor of three churches Mr. Hall has been the Associational Director of the Seventy-five Million Campaign, which was launched five years ago and is now being completed, November 23-30 having been designated as completion week. On November 1 Mr. Hall issued a letter to the Christian workers of the association urging them to organize for the final effort to put the campaign over the top.

The standard set during the Seventy-five Million Campaign is to be maintained if the Baptists of the South carry out their present program. Apportionments on

this basis have been made in each state and the financial goal of the Chowan Association for 1925 is \$45,000. This apportionment was recommended by the pastors and executive committee and also by the association itself in its last annual session at Warwick on September 24, 1924. The apportionment of each church is as follows:

Ballards Bridge \$1,500; Bell Haven \$210; Berea \$500; Bethel \$600; Beulah \$200; Blackwell Memorial \$6,000; Calvary \$100; Center Hill \$900; Chapel Hill \$400; Coinjock \$160; Columbia \$500; Cool Springs \$420; Corinth \$900; Creswell \$300; Ebenezer \$500; Edenton \$5,500; Elizabeth City First \$5,500; Englehard \$50; Eure \$200; Eureka 700; Gatesville \$900; Geneva \$50; Great Hope \$200; Gum Neck \$100; Hartford \$1,650; Hobbsville \$200; Huddle \$25; Indian Town \$25; Macedonia \$100; Monticello \$350; Middle Swamp \$500; Moberg \$225; Mt. Pleasant \$650; Mr. Sinai \$325; North Lake \$50; Oak Grove \$80; Oak Ridge \$110; Olivet \$75; \$50; Whiteville Grove \$450; \$400; Pleasant Grove \$25; Poplar Branch \$225; Powells Point \$225; Providence \$500; Ramoth \$1,000; Rehoboth \$100; Reynoldson \$500; Riverside \$500; Roanoke Island \$125; Rocky Hock \$25; 640; Roduco \$100; Roper \$225; Ross Bay \$25; Salem \$500; Sandy Cross \$2,100; a, 344m. 0; Sandy Cross \$1,500; Sawyer's Creek \$2,100; Shady Grove \$25; Shiloh \$1,900; Sound Side \$800; South Shore—; Summerset \$25; Swan Quarter \$150; Travis \$150; Warwick \$1,500; Whale's Head \$150; Whiteville Grove \$450; Wodville \$250; Yeopim \$400.

Clothing That Every Boy Is Wanting Now

- Overcoats for Boys, ages 12 to 16 yrs., \$6.50 to \$12.50
- Overcoats for Boys, ages 6 to 14 yrs., all full lined of all wool materials in the most popular colors, \$9.95 to \$12.50
- Markinaws—the short coat for real Outdoor Boys in a beautiful range of plaid back patterns, Sizes 10 to 14 yrs., \$ 9.95; Sizes 15 to 18 yrs., \$10.95
- A complete line of Boys' Hats and Caps to go with any Suit or Overcoat.
- Boys' Outing Gowns, sizes 6 to 18 yrs., \$1.00
- Two Pants Suits for Boys—sturdy wearing well made suits of good materials and in the best patterns, sizes 6 to 18 yrs., \$9.95 to \$16.50
- Boys' Slipover Sweaters—these numbers are the best values and are in the most wanted colors, \$2.95 to \$5.50
- Boys' Coat Sweaters in all colors, sizes 26 to 36, prices ranging from \$1.95 to \$6.50
- Boys' Outing Pajamas, sizes 8 to 18 yrs., \$1.50

Rucker & Sheely Co.
Elizabeth City's Best Store



CHILDREN

It is comparatively easy to indulge one's pride too much in the matter of smoothing the way for children.

It takes strong winds to make strong trees, and problems and struggles are necessary for the production of strong characters.

Childhood habits are vitally important.

Give your children practise in the formation of good habits—open an account for them here, and by precept and example help them keep it growing.

Carolina Banking & Trust Co.
Columbia, - ELIZABETH CITY, - Hertford

WHILE THE WEATHER MAN IS SMILING UPON US

and, before the days grow shorter, we invite your attention to some items which have especial interest at this season:

MADEIRA AND ITALIAN LINENS

A large and attractive display of these goods at prices that are equally attractive.

OTHER THINGS FOR THE HOUSEHOLD

Bed Spreads, Sheets and Pillow Cases, Blankets, Towels.

ALSO NUMEROUS PERSONAL ARTICLES, TO WIT;

Hosiery, Handkerchiefs, Umbrellas, Gloves, Etc.
It will be a pleasure to show you at your first opportunity.

FOWLER & COMPANY

OUR ANNUAL CLEARANCE SALE of PIANOS

PRICES AS LOW AS

\$75

OTHERS AT

\$100 \$125
\$150 \$175
\$200

UP

Terms as Low as \$25.00 Cash

Included in this sale are Pianos of the following manufacturers—
KNABE, KHANISH & BACH, LESTER, STEIFF, STORY & CLARK, STARR, LINDEMAN, BREWSTER, LUDWIG, STEGER, BRADBURY, CONCORD, BRINKERHOFF AND MANY OTHERS.

That have come to us by way of exchange—these pianos are being overhauled and put in first class condition and offer a rare opportunity for you to get a good serviceable piano at practically one-fourth the regular price. This lot of 35 Pianos includes Grands, Uprights and Player Pianos—Pianos that will be good for home, school, or church work. If you have the remotest need of a piano it will pay you to attend this big sale.

Sale Now In Progress
Act Quickly Before It Is Too Late
Pianos at Practically Your Own Price

PLAYERS AS LOW AS

\$325 \$350
\$375 \$400
\$450 \$500

Pay as Little as \$25 Cash
Weekly Payments as Small as \$1.50
Pay as Little as \$5.00 Per Month



DUFF PIANO COMPANY

304 Main Street

Write For Complete Bargain List

Elizabeth City, N. C.

"LARGEST PIANO DEALERS IN NORTH CAROLINA"