

Cap Anson Best Known Ball Player

PREMIER BATTER IN ALL BASEBALL

And if He'd Had Speed in Base Running Commensurate with Stick Skill Would Have Been Marvel

By JOHN R. FOSTER
(Copyright, 1924, by The Advance)
The baseball season of 1923 will be the 40th anniversary of the National League. In commemoration of this anniversary, which will be fittingly recognized during the coming season by the various clubs of the league, John R. Foster, former sportswriter and now editor of the Advance, has written a remarkable series of articles about the National League. These articles will deal with the history of the league and its founders and how they happened to create it; the first teams of the league; the 35 greatest players of the league; its first leading pitcher; its first leading batter; its greatest season; its early championship and the development of the league.

There is no ball player, past or present, who was known as well as "Cap" Anson, and who is known by reputation, even to this day, as well as he was. Even Babe Ruth, with the modern popularity which has attached to the mighty mauler of home runs, has not the fame that attaches to this wonderful product of Marshalltown, Iowa, the greatest ball player in some respects that the National League or any league ever produced. Anson was not the shrewd organizer that some ball players proved to be. He was not the keen

business man of some of his contemporaries but he was a leader and a rugged, conscientious, highly honorable and absolutely honest fighter. He did not know what trickery meant and was so guiltless himself that he was the victim of others. He had a strong aversion to what he called "Baltimore baseball" and never could be induced to play it although now and then it was perpetrated under his very nose by some of his own players but usually as retaliation or to fool the "old man."

intense quality, and did supplant the old time methods where runners stopped when they were about to be touched and allowed themselves to be touched. A player who tried to get away was considered "no gentleman."

great batters but never one who batted for 21 years as he did. During part of this time he led his league. His best batting average was .421 in 1887 and he might have made it higher that year if his impatience had not got the better of him. He would not wait to receive a base on balls. In 1887 a base on balls was scored as a

base hit. Anson began to play ball at Rockford, Ill., on the same team that made Albert G. Spalding famous and he went to Chicago when Spalding went there. He played third base at first, a fact

little known to those who have associated him always with first base. Had Anson been a faster runner his batting averages annually would have increased in proportion. Continued on page 7



Put Flowers on Your Gift List

- CHRISTMAS CORSAGES;
- BASKET ARRANGEMENTS CUT FLOWERS.
- BOXES CUT FLOWERS.
- BLOOMING POTTED PLANTS.
- CHRISTMAS CEMETERY WREATHS.
- SINGING CANARIES.

WHEN YOU DESIRE the beautiful in flowers, arranged and delivered when and as you specify; we await your commands.

DO NOT DELAY—PLACE YOUR ORDER TODAY.

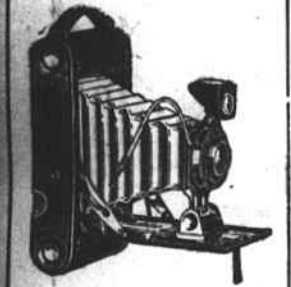
Ryan Floral Co., Inc.

8 South Road St.

Phone 842.

FIREWORKS!

GET YOUR
Christmas Fireworks
— AT —
Smithson's
ON
Newland Road
ALL KINDS AND PRICES RIGHT



Why Don't You Give a CAMERA

\$2.00 to \$60

From the smallest little Brownie to the most elaborate Kodak, we have every wanted size and style and model that you can possibly wish.

There's a Camera for every purpose at a price for every purse. Surely Old Santa cannot think of a more appropriate Gift than a Camera.

Louis Selig

Quality Since 1882
Main & Water Sts.

Quitting Business Sale

Now Going On

— at —

Mitchell's

"A Wise Christmas Present"

Have you a son? Phone 542-J. I will call and explain to Ma and Pa the wisdom of the 20 Pay Accelerating Endowment Policy for your School and College Son.

Should he live through this period of your financing him, the policy then 4 to 6 years old will have a collateral security. A great stepping stone for his start in business—(Ask your banker). Age from 10 yrs. \$1,000 to \$5,000. The premium is very low. The dividends are paid beginning end first year. Hence a very low net cost.

BARLOW HARRELL
DIST. AGENT.
The Union Central Life Ins. Co.

Have you a son coming home Christmas or going to college next season?

PHONE 542-J.
(Not in Directory)

666

Is a prescription for Colds, Grippe, Deague, Headache, Constipation, Biliousness. It is the most speedy remedy we know.

Light a Christmas Candle every week

Join Our Christmas Club

For a **Brighter Christmas**

BEGINNING now and ending a few weeks before next Christmas, this Club offers you the ideal means for accumulating, week by week, a splendid sum of money before the next Yuletide rolls 'round.

In fact, the plan is so simple, so comprehensive in its scope, that it is the ideal way to practice systematic thrift for any purpose. Take, for instance, any one of the many Clubs that we offer. The weekly payments do not amount to much and there is a class that represents a weekly sum that you could spare without the slightest hardship or inconvenience. And then see what a fine sum you will have at the end of the fifty weeks! You can provide more than enough for all of your Christmas needs—enough more to care for the more serious needs—sufficient to start a permanent fund for your protection and the protection of your loved ones in the days to come.

Light your first candle by joining our Christmas Club today

Carolina Banking & Trust Co.

Hertford, ELIZABETH CITY, Columbia

Holiday Footwear

—FOR GIFTS AND FOR YOURSELF—

We have just the right Shoes for Daddy, Mother, Brother, Sister, Grandmother, Granddaddy, Uncle, Aunt and the Baby, and also wish to call your special attention to our stock of special numbers for the College Boys and the Hunting Man.

"Make Your Selections Today"

Owens Shoe Company

HINTON BUILDING

"HIS" GIFT! NECKWEAR

Here's a selection that was purchased to satisfy every variety of taste—hence is so all-embracing as to include the preferences of all men.

Broad Silk—
50c, \$1, \$1.50, \$2
Wool Crepe—
\$1.00
Silk Knit—
50c-\$1.00

Rucker & Sheely Co.

Elizabeth City's Best Store

MAVIS

FACE POWDER

It does two remarkable things—protects and preserves the skin and gives it beauty. Lastingly fragrant with irresistible Mavis perfume. In white, flesh, rose and Rachel.

VIVAUDOU

Jefferson Standard Life Insurance Company

Julian Price, President. Greensboro, North Car.

In "our own country"—North Carolina—where we are intimately known we have more insurance in force than any other Company; and each year, for the past several years, we have written more than any other Company.

We issue policies on the lives of both male and female at ages 9½ to 65, with or without double indemnity and disability, and upon the participating or non-participating plan, in amounts of \$1,000.00 to \$100,000,000.00.

INSURANCE IN FORCE, over \$215,000,000.00
ASSETS, over \$25,000,000.00

Without the confidence and support of the old Home State we could not have gone so far and so fast. We show our appreciation of this faith by investing our funds in first mortgage loans in communities from which we receive our business, which helps our State, its people and our Company.

S. S. CARTWRIGHT, Special Agent
305 Hinton Building.
Elizabeth City, N. C.

CAN YOU SPARE A CHILD?

Famo and Lebanon Belle Flour are absolutely flours of quality sold by the leading grocers.

—DISTRIBUTED BY—
A. F. TOXEY & COMPANY
Water Street.

By Charles McManus

PAPA! WHAT DOES B-R-I-E-F SPELL?

BRIEF!

WHAT DOES IT MEAN?

TO CONDENSE A LONG SENTENCE INTO AS FEW WORDS AS POSSIBLE

I KNOW A LONG SENTENCE WITH ONLY TWO WORDS TO IT

WHAT IS IT?

TWENTY YEARS!!

USE SULPHUR TO HEAL YOUR SKIN

Broken Out Skin and Itching Eczema Helped Over Night

For unsightly skin eruptions, rashes or blotches on face, neck, arms or body, you do not have to wait for relief from torture or embarrassment. declares a noted skin specialist. Apply a little Mentho-Sulphur and improvement shows next day.

Because of its germ destroying properties, nothing has ever been found to take the place of this sulphur preparation. The moment you apply it healing begins. Only those who have had unsightly skin troubles can know the delight this Mentho-Sulphur brings. Even fiery, itching eczema is dried right up.

Get a small jar of Rowley Mentho-Sulphur from any good druggist and use it like cold cream.

PERFECT HEALTH

Tutt's Pills keep the system in perfect order. Regulate the bowels and produce

A VIGOROUS BODY

A sovereign remedy for sick headache, constipation.

Tutt's Pills