

CORN STOVER—A GOOD FEED FOR LIVE STOCK.

Valuable For Several Reasons.

West Raleigh, N. C., Aug. 27. —Stover has its chief value for feeding those animals at light work, those being fattened slowly, and for those being simply maintained through the winter months. The majority of farmers probably do not realize that it contains a considerable part of the total nutrients of the corn crop. As a rule, about one half the total weight of the corn crop is found in the ear, the other half being the stalk and leaves. About 75 per cent of the digestible portion is in the ear and about 25 per cent in the stover. When all the nutrients are taken together the ear furnishes about 60 to 65 per cent of the digestible nutrients and the stover from 35 to 40 per cent.

Stover is not so well suited for animals which are being fattened rapidly or those which are giving large quantities of milk; although, with these kinds of animals, it is so valuable that the farmer cannot afford to disregard it.

EXPERIMENTAL PROOF.

In some work done at the Iredell Branch Station, stover was found to be exceptionally valuable in feeding stockers which were being carried over the winter when fed in conjunction with corn silage. The Massachusetts Station, as a result of four years experiments, found that moderately thin yearling steers lost only 33 pounds per head when wintered on whole corn stalks or corn stover alone. Corn stover will, therefore, furnish nearly a maintenance ration for animals which are merely being carried through the cold months. In some trials at the Nebraska Station, two year-old steers, fed one half alfalfa hay plus one half corn stover, did nearly as well as those fed clear alfalfa hay, similar amounts of grain being fed in both cases. Trials at the New Hampshire Station show that shredded corn stover may be considered a good substitute for timothy for winter feeding of horses when fed with concentrates. In some trials conducted at the Wisconsin Station, where corn stover was fed to some milk cows, it was found that 42 pounds of stover was somewhat superior to 13 1/2 pounds of good mixed hay. In a second trial it was found that 11 1/2 pounds of clover hay produced somewhat more than 33.3 pounds of corn stover. Reduced to tons, it was found that one ton of mixed clover and timothy hay was worth three tons of corn stover, and that one ton of clover was somewhat superior to three tons of corn stover. The hays were fed in conjunction with good grains.

A few years ago the Missouri Station conducted a series of experiments to determine the value of corn stover for getting yearling steers through the cold months. It was found, in brief, that one ton of timothy hay, when fed to young animals of this kind, was worth about three tons of corn stover. Of course, when young animals of this sort are fed corn stover a small ration of cottonseed meal should be used as a supplement. —DAN T. GRAY, Chief, Division of Animal Industry.

Corner-Stone Laying.

On next Wednesday afternoon, September 5th, at 3:00 o'clock the corner-stone for the new Creswell Graded School building will be laid with the impressive ceremonies of the Masonic Fraternity, and everybody is cordially invited to be present and rejoice with the people of that community in the consummation of their heroic endeavors to place

EARLY SHOWING OF Latest Fall Clothing



Copyright Hart Schaffner & Marx

The Celebrated HART, SCHAFFNER AND MARX CLOTHING

Complete Line of the Latest Modes in Fall and Winter Suits.

This Brand of Clothing is Known the World Over.

A Suit to Correctly Fit Every Figure.

HART SCHAFFNER & MARX CLOTHING

AT

\$22.50 \$25.00
\$27.50 \$35.00

With a Guarantee of Quality and Workmanship.

We also have a complete line of LADIES' COAT SUITS of best quality and style



Copyright Hart Schaffner & Marx

Copyright Hart Schaffner & Marx

CAHOON'S

PLYMOUTH'S SHOPPING CENTER

their children in proper line for the higher duties and responsibilities of life.

The school building, to cost \$15,000 00, may not seem so great to the people of larger and more wealthy towns, but to Creswell it means great sacrifice—a sacrifice only understood by those who have learned to live the life dedicated to the future betterment of humanity.

These people seem to have learned the lesson well that "It were better never to have lived at all, than to die and leave the world no better than they found it," and we commend their spirit of sacrifice and progress to other sections of Washington County, Plymouth not excepted.

Good speeches will be made on the occasion, and while we take it for granted that all residents of the immediate school district will co-operate in making this a great day for Creswell, we also trust that all others who can do so will be present and rejoice with them.

We Do JOB PRINTING!

NOTICE OF MORTGAGEE'S SALE.

Under and by virtue of authority contained in a certain mortgage executed by W. E. Belange and M. E. Bologna to T. J. Basnight on the 28th day of November, 1911, and transferred and assigned by the administrator of T. J. Basnight, H. S. Basnight, to the undersigned, B. F. Chambers, now owner of the debt secured, I shall, on the 17th day of September, 1917, offer for sale at the court house door in Plymouth, at twelve o'clock M., for cash, the following described tract of land, situate, lying and being in Washington County, Skinnerville Township, bounded and described as follows: Beginning at A. Newberry's corner on the lane and running south thirty-five (35) yards and cornering at an oak post; thence east 140 yards and cornering at a gum; thence north 35 yards to A. Newberry's corner; thence back 140 yards to the first station, containing one acre, more or less.

This 16th of August, 1917.
H. S. BASNIGHT, Admr. of T. J. B.
B. F. CHAMBERS, owner of debt.
L. W. GAYLORD, Atty.

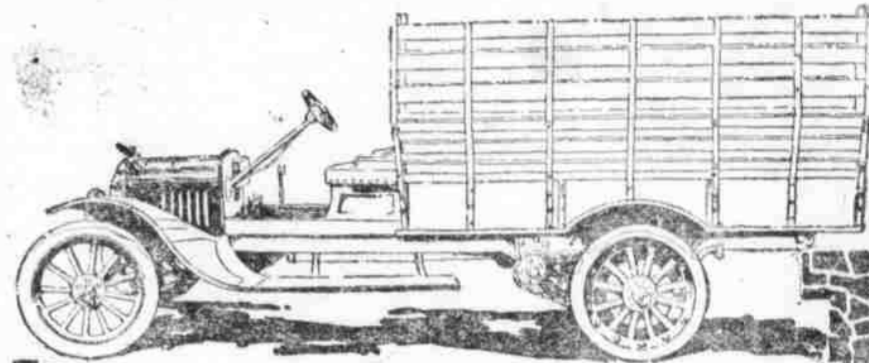
Subscribe to the Beacon.

NOTICE OF SUMMONS.

Sarah J. Moore vs. Nathan Moore
The defendant above named will take notice that an action entitled as above has been commenced in the Superior Court of Washington County for an absolute divorce, and the said defendant will further advise that he is required to appear at the next term of the Superior Court of the said county, to be held on the 1st Monday before the 1st Monday in March, 1918, at the court house in said county, in Plymouth, N. C., and answer or demur to the complaint in satisfaction, or the plaintiff will apply to the court for the relief demanded in said complaint.
This Aug. 9, 1917.
C. V. W. AUSBON, C. S. C.

Mr. P. L. Rea of Rea's Beach wishes to announce that the resort is now open to visitors and that the price of admission is 50¢. For the use of a bath-room the charge is 10¢. He also states that he can furnish desirable parties with a house to be used in having house-parties.

Smith Form-a-Truck \$350



Do All Your Hauling With One Smith Form-a-Truck

SMITH Form-a-Truck will keep your horses on the farm doing real farm work.

And it will do even more than this for you. In one piece of equipment it will give you every type of farm body, if you use the famous Eight in One Convertible Body furnished at slight additional cost.

You don't have to maintain extra wagons.

One Smith Form-a-Truck with this body does it all. Keep your boy on the farm by using Smith Form-a-Truck with the Eight in One Convertible Body. He knows how to drive a Ford, and enjoys it.

With this Eight in One body he can do all of your farm hauling for you—let you spend your time on the work that brings bigger crops—better stock.

Or if you drive yourself, you won't have to start away before sunrise and get back at dark.

Get up at the usual time—do your your chores—start away an hour or two later than you ordinarily would. Have an hour or two more time to spend in town doing the errands you want to do, and get back from two to three hours earlier.

That's what thousands of farmers are doing with Smith Form-a-Truck. It is what you can do and what you will do if you want to get real efficiency and save real money.

Use Any One of Six Chassis

Using any one of six chassis, Smith Form-a-Truck combines with any Ford, Maxwell, Dodge Bros., Buick, Chevrolet or Overland chassis to make a fully guaranteed one ton truck. It gives you real truck construction that will stand up under the hardest hauling you could ever do.

When You Are in Town, Drop In

When you are in town drop in and see Smith Form-a-Truck. It will pay you well.

Plymouth Garage Motor Co.

The careful man doesn't forget to take a life preserver with him on life's voyage. Storms of adversity may come. A Bank Account makes you feel safe.



IF YOU HAVE NEVER BEEN IN OUR BANK, COME IN AND LET US SHOW YOU OUR INSTITUTION. WE ARE PROUD OF IT.

YOU DON'T KNOW HOW EASY IT IS TO START A BANK ACCOUNT WITH US, UNTIL YOU HAVE "TRIED." WE WILL GLADLY ADVISE YOU ABOUT YOUR MONEY MATTERS FREE OF CHARGE. THAT IS OUR BUSINESS.

BANK WITH US

WE PAY 4 PER CENT ON CERTIFICATES OF DEPOSIT.

The Washington County Bank.

Plymouth N. C.

Sow a Winter Cover Crop.

For the best Northern and Western seeds, see Roanoke Milling Co.

We have in stock a few bags of good seed rye at an attractive price. We also have a good supply of crimson clover seed that can be purchased in small quantities. Our prices on winter seed oats are most reasonable.

See us before you buy elsewhere, and learn if our prices are not the best that you have had.

We also carry all kinds of feeds. Come and see us when in need of horse, cow or hog feed.

ROANOKE MILLING COMPANY.

Plymouth, N. C.