

## ASHEVILLE BUSINESS DIRECTORY

Use it to Plan Your Shopping Trip, or for Mail Inquiries.  
The Firms Listed Will Serve You Well.

**Advertising.**  
BOOKLETS designed and written. 63 American Bank building. Gill.  
WEEKLY NEWSPAPERS. Western North Carolina territory. Rates? Gill.

**Automobiles.**  
BIG LINE USED CARS. Cash or credit. OK Auto Co.  
CHEVROLET distributors. Livery and auto service. Chambers & Weaver Co.  
CASH talks. Used cars. Every make. Overland Asheville Sales Co.

**Cafes.**  
BOARD of Health says: "Cleanest in town." (24) Broadway Cafe.  
HOMEMADE candies, restaurant, soda. Club Cafe and Candy Kitchen.

**Department Stores.**  
H. REDWOOD & CO. clothes, hats, underwear, etc., for everybody. Dry goods, rugs, Butterick patterns.

**Drug Stores.**  
MEET your friends here. 43 Patton avenue. Paramount Drug Co.

**Furniture.**  
WHEN you see a Furniture Ad think of Green Brothers.

**General Mechanics.**  
WRITE or see McTary & Son for your Truck Body.

**Groceries.**  
CUT RATES. Groceries amounting \$5.00 or more. Tweed & Collins.

**Hardware.**  
BUILDERS' hardware a specialty. Northrup McDuffie Hardware Co.

**Jewelers.**  
THE House of Gifts. 52 Patton avenue. Chas. E. Henderson.  
GLASSES fitted. Expert watch repairing. 15 Church. H. M. Frost.  
J. E. CARPENTER, Jeweler. Watch repairing specialty. 16 North Pack Square.

**Kodak Finishing.**  
EXPERT work. Eastman agency. Mail orders solicited. Brown Book Co.

**Kodak Supplies.**  
KODAK developing, printing, mail orders. Amateur supplies. Robinson Photo Store.

**Laundry.**  
THE Nichols way for Laundry Satisfaction. Asheville Steam Laundry.

**Loan Office.**  
FINKELSTEIN'S Loan Office. Jewelry, trunks, leather goods. 23 Biltmore avenue.

**Monuments and Tombstones.**  
MONUMENTS, Tombstones, Cut Stone, Tile. C. S. Gudger, 51 Broadway.

**Musical Instruments.**  
FALK Music House. 76 Patton avenue. Phone 206.

**Men's and Boys' Furnishings.**  
J. W. NEELY & CO. for Stein-Bloch Smart Clothes.

**Office Supplies.**  
OFFICE SUPPLY CO., typewriters, adding machines, safes. 91 Patton avenue.

**Optometrist and Optician.**  
CORRECT GLASSES. 52 Patton avenue. (Henderson's Jewelry store.) Dr. Denison.

**Photographers.**  
HIGGASON STUDIOS, 60 1/2 Patton avenue. Opposite post office. Artistic portraiture.

PELTON STUDIOS, Pack Square. High-grade portraiture and commercial photography.

**Pianos Tuned.**  
REPAIRED. Expert work. All guaranteed. Elks building. Williams & Huffman.

**Printing.**  
PRINTING, Bookbinding, Loose Leaf Binders. Hackney & Moale Co.

**Real Estate.**  
W. T. ROWLAND & CO. Farms. "It Can Be Done."  
REAL ESTATE. Insurance, 18 South Pack Square. Phone 1346. Lorick Co.  
REAL ESTATE BROKER. See James W. Behen, 11 1/2 Church street.  
ASHEVILLE Realty Investments. American Bank building. Henry T. Sharp Co.  
If interested in Asheville Real Estate talk to John Acee.

**Roofing.**  
METAL SHINGLES, Guttering, Spouting. 95 Patton. A. L. McLean Co.

**Seeds.**  
STRIKER SEED COMPANY, wholesale and retail seed merchants. Poultry supplies.

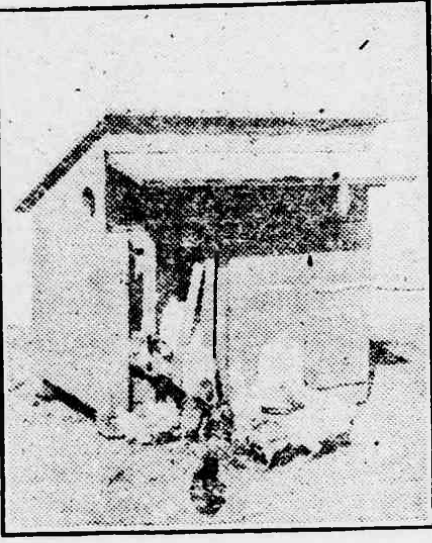
**Sporting Goods.**

**Tire Repairs.**  
SEND us your tires and tubes. Asheville Steam Vulcanizing Co.

## Poultry Farming

### BROODING CHICKS.

Care Should Be Taken That They Be Kept Warm and Free From Drafts.  
Hatching the chicks is the least of the poultryman's worries. Far more important than the hatching is the brooding, which offers all kinds of opportunities for loss if not handled properly, writes a correspondent of the Farm and Fireside. Do be very careful about drafts or sudden changes in temperature in the room where the brooders are kept. The chicks, especially during the first few weeks, are particularly susceptible to irregularities of this kind. That does not mean that there should not be plenty of fresh air in the room, but if it is the least bit cold screens should be placed by the windows so that the air does not strike the chicks directly.  
The brooders themselves should be kept at all times warm enough for the



BROOD COOP USED AT GOVERNMENT POULTRY FARM, BELTSVILLE, MD.

chicks to be thoroughly comfortable without crowding, which is often fatal to them. Enough brooders should be provided so that each chick will have plenty of room without being forced outside the brooder at night.  
When the chicks first come out of the incubator they have in their bodies unabsorbed the yolk of the egg, which nourishes them for at least thirty-six hours, so that no food is necessary at first. The water and fine grit are essential to start the digestive organs to do their proper functions. We fed dried breadcrumbs and finely chopped hard boiled eggs as a first feed, feeding this every three hours for the first three days.  
Then we gradually substituted rolled oats ground in a meat grinder and mixed this at first with breadcrumbs, as they had to be taught to relish this diet.  
By the end of the first week we had begun on the grain food, which we didn't mix ourselves, but bought in the form of commercial chick feed. We fed this every three hours for the first week and then every four hours at the rate of one-half pint for a hundred chicks, which is what they can clean up in about ten minutes. In between times they had before them a hopper containing a mixture of one part of finely sifted beef scraps, one part of fine charcoal and two parts of finely sifted bran, with the addition of one part of cornmeal in the second week, also omitting to sift the bran.  
During the first week we fed them also beet or turnip greens in the meat grinder, offering this about once or twice a day and gradually giving it to them often in the second week. We also had cabbage leaves when we had it, and this they relished greatly, and, of course, we kept charcoal and grit before them constantly.

### EASILY-MADE HOPPER

Poultry on Range Should Have Supplemental Dry Feed.

Mash tends to promote rapid and uniform growth of fowls and is economical—Device illustrated is efficient.  
The feeding of dry mash to farn poultry on range is not practiced as generally as it should be. Dry mash is composed of finely-ground grains, and usually contains some animal protein in the way of beef scrap, fish scrap, etc. This dry mash is intended to supplement the grain ration and to be an additional source of supply to the chickens on range.  
Dry mash always accessible to poultry helps to promote a rapid and uni-

### CARE OF YOUNG TURKEYS.

Absolutely no food at all should be given young turkeys until the third day after hatching, and then the important question is less what to feed than how much. Boiled egg mixed with rolled oats, rubbed fine, and a good third of cracker crumbs is the best food. Don't let them have much, just a bite or two. Don't be over-protective to the often told tale that a baby turkey has no appetite. Some of them are as greedy as pigs, and their digestive apparatus is so delicately adjusted that a few bites too much upset them. Leave corn and corn products entirely out of their menu for best results and keep a varied assortment of grits always in reach.

### CURE FOR SCALY LEG.

The hatching season is here. Those who hatch by lens should see that they do not have scaly legs, as they interfere with good hatches and the chicks get the infection from the old hen. Take the kerosene can and go through the henhouse after dark, take each fowl from the roost, and give those that have scaly legs a good bath of kerosene right on the legs and put them back on the roost. One application is generally sufficient, and in a few weeks' time the scales will all have disappeared.

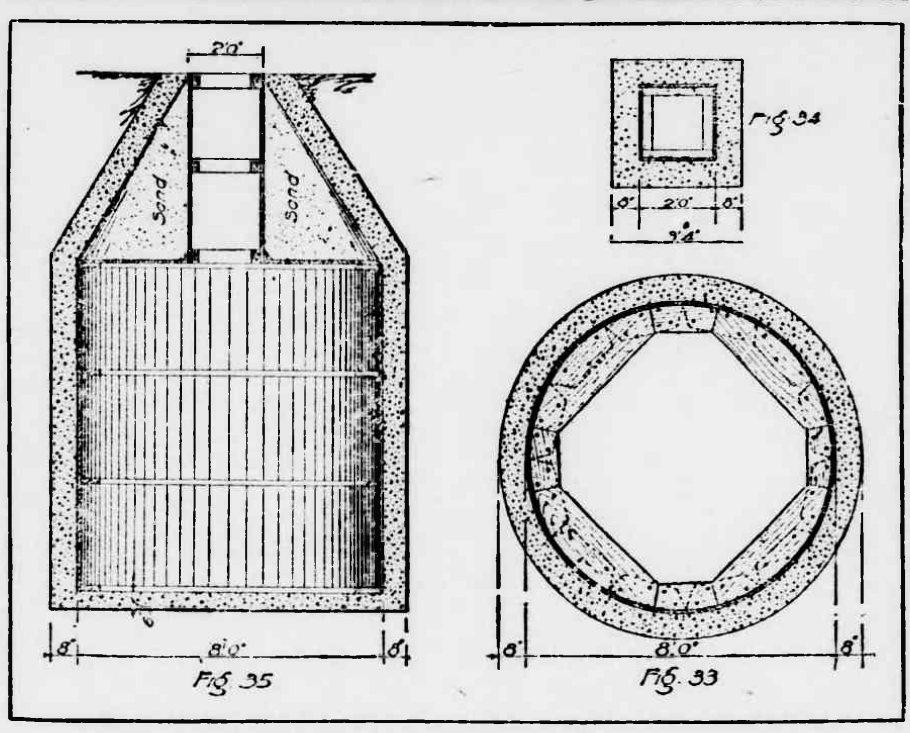
### OVERCROWDED BROODERS.

The average brooder will safely handle just about half the number of chicks for which it is claimed to be made. Crowding is almost certain to bring dire results. Be chary of the homemade brooders with lantern heat. There is danger of asphyxiation unless it is properly constructed.

### BE PREPARED.

Hatching the early chicks when one is not prepared to care for them will cure the chicken fever every time.

## METHOD OF BUILDING CONCRETE CISTERN



PLAN SHOWING HOW CONCRETE CISTERN IS MADE.

The following article and illustrations describe in detail the best method of building a concrete cistern:  
Make a circular excavation 16 inches wider than the desired diameter of the cistern, or allow for a wall two-thirds the thickness of a brick wall that would be used for the same purpose, and from 14 feet to 16 feet deep. Make a cylindrical inner form. (See Circular Form) the outside diameter of which shall be the diameter of the cistern. The form should be about 9 feet long for a 14-foot hole, and 11 feet long for one 16 feet deep. Saw the form lengthwise into equal parts for convenience in handling. Lower the sections into the cistern and there unite them to form a circle (Fig. No. 35), blocking up at intervals 6 inches above the bottom of excavation. (Withdraw blocking after filling in spaces between with concrete and then fill holes left by blocking with rich mortar.)

### REMOVING FRAMES.

Let concrete set for a week, then remove one of the floor boards and let the sand fall gradually to the bottom of the cistern. When all boards and forms are removed they can be easily passed through the two-foot aperture and the sand taken out of the cistern by means of a pail lowered with a rope. This does away with all expensive forms and is perfectly feasible. The bottom of the cistern should be built at the same time as the side walls and should be of the same mixture, six inches thick.

### MAKING CONCRETE.

Make concrete of one part Portland cement, two parts clean, coarse sand, and four parts broken stone or gravel. Mix just soft enough to pour. Fill in space between the form and the earth with concrete, and paddle it to prevent the formation of stone pockets, using a long scumming for the purpose, and also a long-handled paddle for working between the concrete and the form. To construct the dome without using an expensive form, proceed as follows: Across top of the form build a floor, leaving a hole in the center two feet square. (Fig. No. 34.) Brace this

### TRY GROWING FEW FILBERTS

No Other Nut Comes Into Bearing Earlier—Try Them in Experimental Way at First.

Probably no other nut comes into bearing earlier than the filbert, of which the common hazel nut is a species. Inasmuch as its near relative, the hazel nut, is so widely distributed throughout the country, it seems well worthy a trial on a small scale. Plant the nuts in the fall. They may be purchased wherever nuts are usually sold, and an investment of 5 or 10 cents is all the expense needed unless one desires to try some known variety, when the bushes may be obtained from a nursery.  
There is no certainty as to the quality of the nuts which may be obtained from the seed, but some sort of an edible fruit is almost certain, and one should try them in an experimental way at first, anyhow. They are said to be very susceptible to fungus attacks, but although there is no information of any experiments, it is believed that bordeaux mixture will overcome this. If you are interested in nuts and care to try an experiment, it may be worth while to plant a handful of filberts.

### ECONOMICAL FEED FOR PIGS

With Grain and Pasture, Skim Milk Will Make Rapid Gains—Provide Ashes and Salt.

Skim milk is one of the best feeds for young pigs. With grain and green pasture it will make economical gains on pigs.  
Experienced feeders find that the best way to feed it is to give the pigs one pound of grain to three pounds of skim milk. Then if the pigs have a pasture to run on you may expect them to make rapid gains.  
After the pigs are weaned they may lose flesh or at least make gain very slowly unless fed a feed rich in protein to make bone, muscle, frame material, mineral matter, etc. If fed skim milk and grain they will not disappoint you.  
Pigs should have access to ashes and salt. A good plan is to mix about two quarts of salt to one bushel of ashes, put the mixture in a box with low sides and put in reach of the pigs. Keep dry.

### PEAS OFTEN BECOME "BUGGY"

Standard Method of Preventing Infection Is to Fumigate With Carbon Bisulphide.

Peas often become "buggy" in the winter. The standard method preventing infestation of all kinds of grubs is to fumigate with carbon bisulphide. Be sure that your stored grains are not injured when it is so easy to put the bugs out of business.

## THE NEW OLIVER NINE

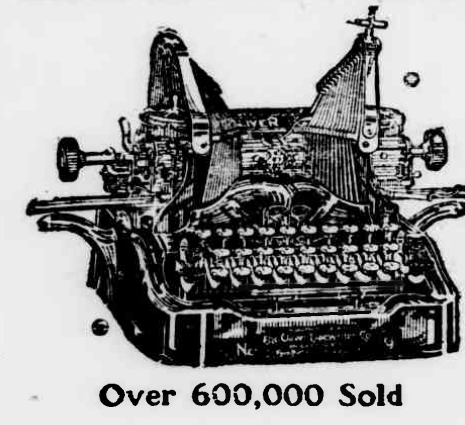
**A TYPEWRITER REVOLUTION**  
New Machines for Half the Former Price

At the very height of its success, the Oliver Typewriter Company again upsets the typewriter industry. Just as it did in 1890, when it introduced visible writing and forced all others to follow. Now this powerful Company—world wide in influence—calls a halt to old expensive ways of selling typewriters. It frees buyers of a wasteful burden.  
A company strong enough, large enough and brave enough to do a big, startling thing like this, deserves a hearing.  
The full facts are set forth in our amazing exposure, entitled "The High Cost of Typewriters—The Reason and The Remedy." One copy will be mailed to you if you send us the coupon below.

**HOW WE DO IT**  
Henceforth the Oliver Typewriter Company will maintain no expensive sales force of 15,000 salesmen and agents. Henceforth it will pay no high rents in 50 cities. There will be no idle stocks.  
You, Mr. User, will deal direct now with the actual manufacturer. No middlemen—no useless tools. We end the waste and give you the savings. You get the \$51 by

**SAVE \$51**  
This Oliver Nine is a twenty-year development. It is the finest, costliest, most successful typewriter we ever built. It is yours for 10 cents per day in monthly payments of \$5.00. Everyone can own a typewriter now. Will any sane person ever again pay \$100 for a standard typewriter when the Standard Visible Oliver Nine sells for \$49?

Send today for your copy of our book and further details. You'll be surprised.



Over 600,000 Sold

**The Latest Model**  
Do not confuse this offer of The Oliver Typewriter Company itself of a brand new, latest model 9 with offers of second hand or rebuilt machines.  
This is the first time in history that a new, standard \$100 typewriter has been offered for \$49. We do not offer a substitute model, cheaper, different or rebuilt.  
Read all the secret facts in our document, entitled "The High Cost of Typewriters—The Reason and The Remedy." The coupon below mailed today will bring you one copy.

### FREE TRIAL

No money down—no C. O. D. After you read our book you may ask for an Oliver for five days' free trial. Be your own salesman. Save yourself \$51. You decide in the privacy of your own office or home, as you see the Oliver. Then if you want to own an Oliver you may pay at the rate of 10 cents per day.  
Mail the coupon now for "The High Cost of Typewriters—The Reason and The Remedy." It rips off the mask. Cut the coupon out now.

THE OLIVER TYPEWRITER COMPANY  
1223 Oliver Typewriter Bldg., Chicago, Ill.

THE OLIVER TYPEWRITER COMPANY,  
B-7 Oliver Typewriter Bldg., Chicago, Ill.

Do not send a machine until I order it. Mail me your book, "The High Cost of Typewriters—The Reason and The Remedy," your de luxe catalog and further information.  
Name \_\_\_\_\_  
Street Address \_\_\_\_\_  
City \_\_\_\_\_ State \_\_\_\_\_

### ADMINISTRATORS' NOTICE

Having qualified as administrator of the estate of M. L. Jones, deceased, late of Transylvania County, N. C., this is to notify all persons having claims against said estate to present the same to the undersigned within twelve months from

this date, or this notice will be plead in bar of their recovery.

All persons indebted to said estate will please make immediate payment.  
This July 21, 1917. G. T. LYDAY, Administrator.  
D. L. ENGLISH, Atty., 7-27-6tc-dle



## Let's Beautify Our Town

What are YOU willing to do to make our town a prettier and cleaner place in which to live?  
A very little bit of money, a little time, and a little PRIDE will work miracles in many cases. You will be tickled with the change yourself and the whole community will thank you.

MILLER SUPPLY CO.  
BREVARD, N. C.  
Machine Shop and Office Near Station.

Note—For general repair and improvement work, no lumber will give greater satisfaction than North Carolina Pine, properly painted. We sell it.

### CERTIFICATE OF DISSOLUTION

State of North Carolina—Department of State.

To all whom these presents may come—Greeting:

Whereas, it appears to my satisfaction, by duly authenticated record of the proceedings for the voluntary dissolution thereof by the unanimous consent of all the stockholders, deposited in my office, that the Toxaway Western Railroad Company, a corporation of this state, whose principal office is situated in the town of Toxaway, county of Transylvania, state of North Carolina (E. G. Moltz being the agent therein and in charge thereof, upon whom process may be served), complied with the requirements of Act 21, Revised of 1906, entitled "Conditions," preliminary to the issuing of the certificate of dissolution.

Now, therefore, I, J. Bryan Grimes, secretary of state of the state of North Carolina, do hereby certify that the said corporation did, on the 30th day of July, 1917, file in my office a duly executed and attested consent in writing to the dissolution of said corporation, executed by all the stockholders thereof, which said consent and the record of the proceedings aforesaid are now on file in my said office as provided by law.

In testimony whereof, I have hereto set my hand and affixed my official seal at Raleigh, this 30th day of July, A. D. 1917.  
J. BRYAN GRIMES,  
Secretary of State.

### Professional Cards.

ROBT. L. GASH W. E. BREESE, JR.  
**GASH & BREESE**  
LAWYERS  
11 to 17 McMinn Building  
Notary Public.

**DR. J. Y. MCKINNEY**  
DENTIST  
Office Pickelsimer Building.

**DANIEL LEON ENGLISH**  
Attorney and Counselor at Law  
Brevard, N. C.  
Real estate law and abstract of titles a specialty.

**ERNEST H. NORWOOD**  
Architect and Builder  
Remodelling and Repairing a Specialty

**Clayton, Clayton & Fisher**  
Attorneys-at-Law  
BREVARD, N. C.

**WELCH GALLOWAY**  
Attorney  
Practice in all the Courts  
Brevard, N. C.

**CHAS. B. DEEVER**  
Attorney-at-Law  
Office Cooper Block

**ALLISON & ALLISON**  
Attorneys-at-Law  
In Old Cooper Building  
BREVARD

**COLEMAN GALLOWAY**  
Attorney-at-Law  
Cooper Block,  
Brevard, N. C.

**CONNETTE LODGE**  
NO. 237 I. O. O. F.  
Meets every Monday night.  
Visitors welcome.

**DUNN'S ROCK**  
LODGE NO. 267  
A. F. & A. M.