

ASHEVILLE BUSINESS DIRECTORY

Use it to Plan Your Shopping Trip, or for Mail Inquiries.
The Firms Listed Will Serve You Well.

Advertising.
BOOKLETS designed and written. 63 American Bank building. Gill.
WEEKLY NEWSPAPERS. Western North Carolina territory. Rates? Gill.

Automobiles.
BIG LINE USED CARS. Cash or credit. OK Auto Co.
CHEVROLET distributors. Livery and auto service. Chambers & Weaver Co.
CASH talks. Used cars. Every make. Overland Asheville Sales Co.

Cafes.
HOMEMADE candies, restaurant, soda. Club Cafe and Candy Kitchen.

Department Stores.
H. REDWOOD & CO., clothes, hats, underwear, etc., for everybody. Dry goods, rugs. Butterick, patterns.

Drug Stores.
MEET your friends here. 43 Patton avenue. Paramount Drug Co.

Furniture.
WHEN you see a Furniture Ad think of Green Brothers.

General Mechanics.
WRITE or see McKary & Son for your Truck Body.

Hardware.
BUILDERS' hardware a specialty. Northrup McDuffie Hardware Co.

Jewelers.
THE House of Gifts. 52 Patton avenue. Chas. E. Henderson.
GLASSES fitted. Expert watch repairing. 15 Church. H. M. Frost.
J. E. CARPENTER, Jeweler. Watch repairing specialty. 16 North Pack Square.

Kodak Finishing.
EXPERT work. Eastman agency. Mail orders solicited. Brown Book Co.

Kodak Supplies.
KODAK developing, printing, mail orders. Amateur supplies. Robinson Photo Store.

Laundry.
THE Nichols way for Laundry Satisfaction. Asheville Steam Laundry.

Loan Office.
FINKELSTEIN'S Loan Office. Jewelry, trunks, leather goods. 23 Biltmore avenue.

Musical Instruments.
FALK Music House. 76 Patton avenue. Phone 206.

Men's and Boys' Furnishings.
J. W. NEELY & CO. for Steinbloch Smart Clothes.

Office Supplies.
OFFICE SUPPLY CO., typewriters, adding machines, safes. 91 Patton avenue.

Optometrist and Optician.
CORRECT GLASSES. 52 Patton avenue. (Henderson's Jewelry store.) Dr. Denison.

Photographers.
HIGGASON STUDIOS, 60 1/2 Patton avenue. Opposite post office. Artistic portraiture.

Pelton Studios. Pack Square. High-grade portraiture and commercial photography.

Pianos Tuned.
REPAIRED. Expert work. All guaranteed. Elks building. Williams & Huffman.

Printing.
PRINTING, Bookbinding, Loose Leaf Binders. Harkney & Moale Co.

Real Estate.
W. T. ROWLAND & CO. Farms. "It Can Be Done."
REAL ESTATE, Insurance, 18 South Pack Square. Phone 1346. Lorick Co.
REAL ESTATE BROKER. See James W. Behen, 11 1/2 Church street.
ASHEVILLE Realty Investments. American Bank building. Henry T. Sharp Co.
IF interested in Asheville Real Estate talk to John Acee.

Seeds.
STRICKER SEED COMPANY, wholesale and retail seed merchants. Poultry supplies.

Sporting Goods.

Tire Repairs.
SEND us your tires and tubes. Asheville Steam Vulcanizing Co.

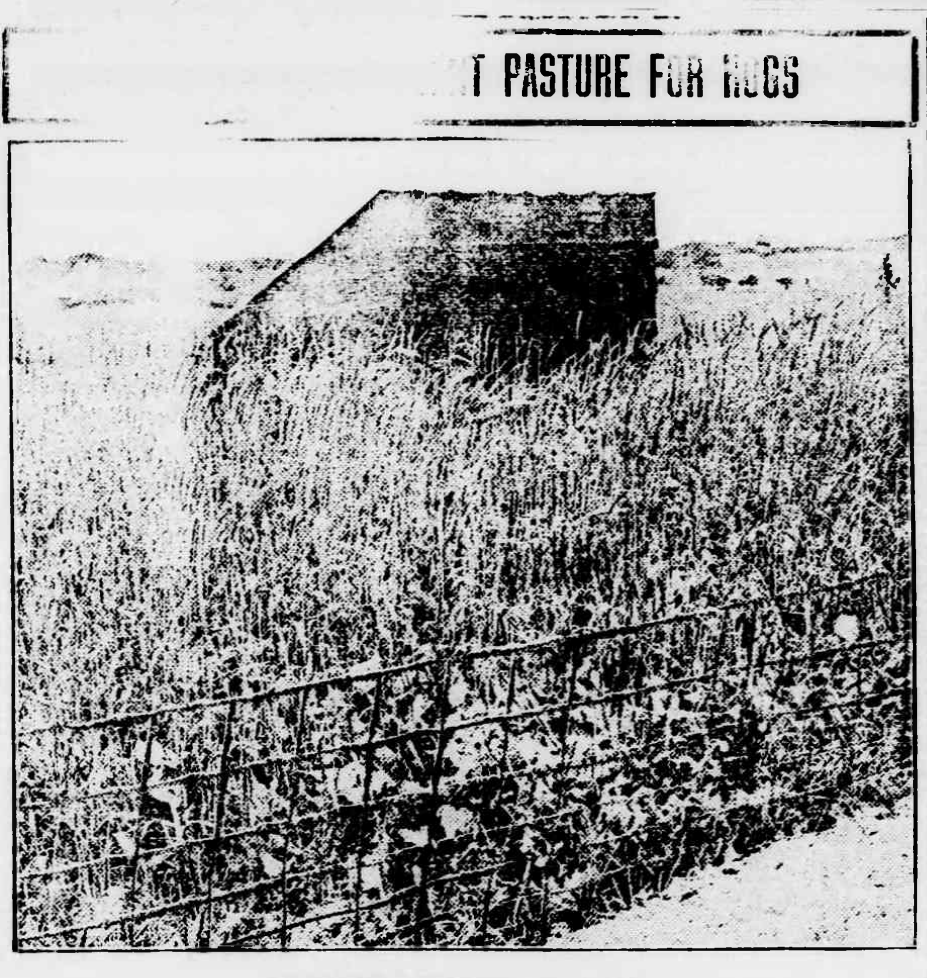
POULTRY WISDOM.

As a means to weeding out poor layers and raising the standard of production, pedigree breeding is unsurpassed. Many cases of disease in the poultry yard could have been prevented if the drinking vessels had been scrubbed occasionally to rid them of disease germs. The best sized eggs are produced by the regular layers, while the sporadic producer usually has an assortment of sizes. Fix up a sheltered corner for the early broody. A newspaper in the bottom of the nest helps keep the eggs warm. It stunts chicks and young hens to get short of grit and shells. If we allow eggs for hatching to get too old or too cold we may expect bad luck with the incubator.

HARDENING CHICKS.

Importance of Regulating the Temperature Under the Hovers.

The New Jersey station calls attention to the importance of the proper regulation of the temperature under the hovers in brooders, says the Orange Judd Farmer. The brooder is thoroughly cleaned and adjusted, and the temperature regulated and maintained uniformly at 98 to 100 degrees two or three days before the chicks are transferred from the incubators. In order that they may feel no sudden change when transferred. Maintain this temperature for two days after the chicks are placed in the brooder. Thereafter gradually lower the temperature beneath the hover until it is about 95 degrees at the end of the first week, 90 at the end of the second and 80 at the end of the third. Continue this so called hardening off process so that at the end of the sixth week the chicks will be receiving little artificial heat, depending upon the climatic conditions and temperature in the brooder house. The chicks thus gradually become accustomed to conditions met in the colony house and on



PASTURE FOR HOGS

AN ACRE OF RAPE AND RYE.

When sown in September, or earlier, an acre of this kind of pasture affords, on the average, grazing for six 100-pound fattening pigs from the middle of October to May, provided a half ration of grain is used as a supplement.

By C. B. WILLIAMS, Chief, Division of Agronomy, N. C. Experiment Station, West Raleigh.

The rape plant closely resembles the ruta-baga during its early stages of growth; in fact, so close is this resemblance that often an experienced grower cannot distinguish between them. Its root system, however, is more like that of the cabbage. It likes cool weather and will grow during any portion of the year after severe freezing weather is passed. It will endure pretty severe cold weather in the fall and winter without being materially injured; in fact, it may be used for pasturage after being frozen, provided stock are kept off while it is frozen. It does not make much growth during the hot, dry months of mid-summer. Under ordinary conditions the plants will attain a height of 18 inches to 2 feet or more. The Dwarf Essex variety of the crop is best suited for us under Southern conditions.

Possibilities of the Crop.

Farmers are becoming more and more interested in the production of green crops for fall, winter and early spring grazing. Especially is this true of those who are engaged in the raising of hogs and poultry. For winter pasturage an acre or two of this crop will supply many tons of nutritious feed at the time of the year when green feeds are scarce. It has been fully demonstrated by repeated trials that an acre of rape properly seeded on good rich land will produce as much pork when used as a hog pasture as the same acre of land cultivated in corn. The rape can be grown much cheaper than the corn, as it will not require any cultivation, and the preparation of the seed-bed and seeding will be about the same for both. The hogs will harvest the rape crop, while the corn must be harvested by the farmer himself. It should be remembered, however, that the acreage of rape that can be profitably utilized for pasturage on the average farm is limited, it usually not being more than two or three acres.

In feeding experiments at the Alabama Station running for 147 days (November 9-April 5) with pigs weighing approximately 45 pounds each at the beginning of the experiment, it was found that the two lots of pigs fed on a ration of two parts of corn and one part of wheat shorts and allowed the use of a rape pasture during the period, produced pork on an average of 34.4 per cent less cost per pound, counting the cost of providing the rape pasture, than did another lot fed on the same ration and confined in dry lots. In other words, the lots fattened on rape pasture, supplemented with the necessary amount of the ration of corn and wheat shorts, made very satisfactory profit, while the lot fattened on the ration of corn and wheat shorts alone in dry lots afforded little or no profit.

Soil and Its Preparation.

Rape is best adapted for growth on a deep, rich, mellow, loamy soil that is fairly well stored with humus. It does not do well on the very light sandy or stiff clay soils because they are deficient in organic matter. Any soil that will produce wheat and corn well will be found suited for the growth of rape. In preparing the land it should be well broken, then thoroughly harrowed into a fine, clean seed bed, as is usually done for turnips or ruta-bagas. If the land has a liberal application of manure the previous year, so much the better. On average land it will be well to apply broadcast over the land, just after breaking and before harrowing, about 300 to 500 pounds per acre of a fertilizer containing 8 to 10 per cent available phosphoric acid, 4 to 6 per cent potash, and 3 to 4 per cent nitrogen.

Seeding.

For the Coastal Plain and Piedmont sections, the spring seeding may be made during March or early in April, and the fall seeding any time between August 20 and October 15. In the mountain section the spring seeding will have to be made in April and the fall seeding during the latter part of July or early in August in order to get best results. The rape seed are

See If Your Diamond Is Genuine.

Here is a test that can be made when a diamond is quite clean and dry. Place on the surface of a diamond a tiny drop of water. Now take a needle or pin and try to move the drop about. If the diamond is genuine, experts say, the drop can be rolled intact. On the other hand when the gem is an imitation the water spreads directly it is touched with the needle point.

Marvelous Banyan Tree.

The giant banyan under which Alexander is said to have camped with 7,000 men, now measures nearly 1,000 feet across the head, contains about 3,000 trunks and forms a dense canopy through which the sunshine never penetrates. Several other species also propagate in like manner.

Why Not Swat Him?

Another form of the double-distilled essence of pest whose framework above his shoulders is composed of reinforced concrete, is the omnipresent nuisance who insists upon breasting the current of pedestrian traffic of a crowded street on the wrong side of the pavement.

"Speed the Parting."

The Departing Guest—"I hope my two weeks' stay here with you hasn't proved a big additional expense to you." Mrs. Invrwing—"Oh, no! George and I have what we call a 'Catastrophe Fund' that we've saved for just such emergencies."—New York Times.

A USEFUL PAIN

Brevard People Should Heed Its Warning.

Have you a sharp pain or a dull ache across the small of your neck? Do you realize that it's often a timely sign of kidney weakness? Prompt treatment is a safeguard against more serious kidney troubles.

Use Doan's Kidney Pills. Profit by this nearby resident's experience.

M. Kelley, farmer, R. F. D. No. 4, Waynesville, N. C., says: "Doan's Kidney Pills have always been a help to me for sore back. I have been troubled considerably in this way ever since the war. Whenever I feel an attack coming on I get Doan's Kidney Pills and take them. I am always sure of good results and I am glad to recommend them."

Price 60c. at all dealers. Don't simply ask for a kidney remedy—get Doan's Kidney Pills—the same that Mr. Kelley uses. Foster-Milburn Co., Props., Buffalo, N. Y.—Advertisement.

Always Patronize News Advertisers.

THE NEW OLIVER NINE

A TYPEWRITER REVOLUTION

New Machines for Half the Former Price

**Was \$100
Now \$49**

At the very height of its success, the Oliver Typewriter Company again upsets the typewriter industry. Just as it did in 1910 when it introduced visible writing and forced all others to follow. Now this powerful Company—world wide in influence—calls a halt to old expensive ways of selling typewriters. It frees buyers of a wasteful burden.

A company strong enough, large enough and brave enough to do a big, startling thing like this, deserves a hearing.

The full facts are set forth in our amazing exposure, entitled "The High Cost of Typewriters—The Reason and the Remedy." One copy will be mailed to you if you send us the coupon below.

HOW WE DO IT

Henceforth the Oliver Typewriter Company will maintain no expensive sales force of 15,000 salesmen and agents. Henceforth it will pay no high rents in 50 cities. There will be no idle stocks.

You, Mr. User, will deal direct now with the actual manufacturer. No middlemen—no useless tools. We end the waste and give you the savings. You get the \$51 by

SAVE \$51

This Oliver Nine is a twenty-year development. It is the finest, costliest, most successful typewriter we ever built. It is yours for 10 cents per day in monthly payments of \$3.00. Everyone can own a typewriter now. Will any sane person ever again pay \$100 for a standard typewriter when the Standard Visible Oliver Nine sells for \$49?

Send today for your copy of our book and further details. You'll be surprised.

FREE TRIAL

No money down. No C. O. D. After you read our book you may ask for the Oliver for five days' free trial. Be your own salesman. Save yourself \$51. You decide in the privacy of your own office or home, as you see the Oliver. Then if you want to own an Oliver you may pay at the rate of 10 cents per day.

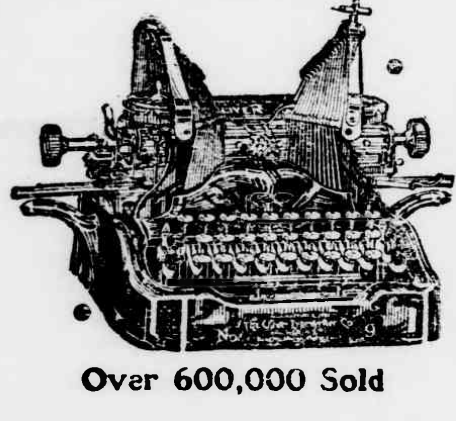
Mail the coupon now for "The High Cost of Typewriters—The Reason and the Remedy." It rips off the mask. Cut the coupon out now.

THE OLIVER TYPEWRITER COMPANY
1223 Oliver Typewriter Bldg., Chicago, Ill.

THE OLIVER TYPEWRITER COMPANY,
B-7 Oliver Typewriter Bldg., Chicago, Ill.

Do not send a machine until I order it. Mail me your book, "The High Cost of Typewriters—The Reason and the Remedy," your de luxe catalogs and further information.

Name _____
Street Address _____
City _____ State _____



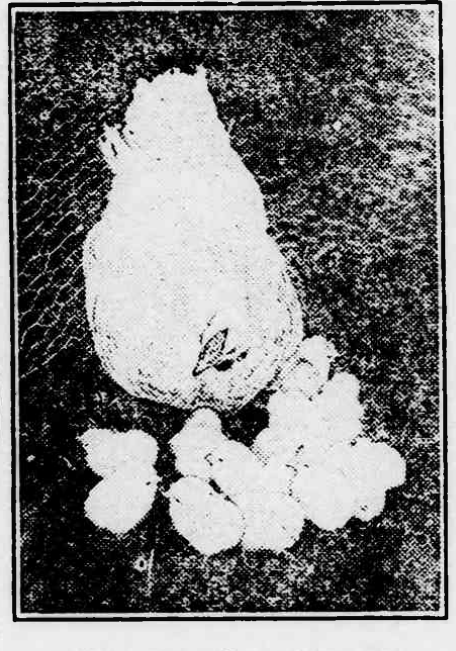
Over 600,000 Sold

Would Doom Species.

Harold was recovering from a case of typhoid fever and the doctor said he must drink plenty of buttermilk. Harold despised buttermilk, but he bravely drank the required amount. One day when the nurse brought in an exceptionally large glass he looked at it sadly and said: "Gee, I just wish every buttermilk cow in the world was dead!"

Use for the Broken Clock.

If a small clock is beyond repair do not throw it away. An excellent idea is to set it aside to be used in case of illness. It will be found just the thing to place in the sick room to indicate the next time for taking medicine. As each dose is given to the patient turn the hands to the hour when the following dose is to be given. In this way all danger of errors is eliminated.



RESULT OF NATURAL INCUBATION.

the range. Run the lamps and stoves as uniformly as possible and avoid variations in temperature from day to day or from night to day. See that lamps and stoves are adjusted to meet any extreme changes in weather. The action of the chicks is an indication of whether or not they are receiving the proper amount of heat. If the temperature is right they will form a loose circle at night. If they are chilled they will tend to pile up against each other, often smothering some and weakening the rest. The proper temperature is the most important factor in artificial brooding.

Poultry Manure.

Poultry manure is more valuable than that of any other common farm animal, and it should be properly handled to prevent waste. Frequent cleaning of the house is necessary, and an absorbent should be used daily—fine dry loam or road dust or mixtures of these used with sand plaster and acid phosphate. Sawdust may also be used with good results. Sifted coal ashes, too, may be used, but not wood ashes or lime.

Analyses and value per ton of manure of different animals:

Animal	Nitrogen, per cent.	Phosphoric acid, per cent.	Potash, per cent.	Value per ton
Poultry.....	2.600	2.000	2.500	\$7.00
Sheep.....	.768	.391	.351	3.30
Hogs.....	.840	.350	.320	3.20
Horses.....	.490	.250	.450	2.21
Cattle.....	.820	.280	.440	2.92

Brooder Briefs.

From 300 to 1,000 chicks may be comfortably brooded in one flock with a colony brooder. However, the specified capacity of any machine should not be overcrowded. Proper attention to all the chicks is impossible if they are crowded under a hover. There should be good ventilation under the hover at all times. It is well to keep the curtain raised a trifle. The house should not be allowed to become damp. At the Pennsylvania State college experiment station it is the practice to clean the hover about once a week or oftener if necessary and the brooder house about every two weeks.

Professional Cards.

ROBT. L. GASH W. E. BRESEE, JR.
GASH & BRESEE
LAWYERS
11 to 17 McMinn Building
Notary Public.

DR. J. Y. MCKINNEY
DENTIST
Office Pickelsimer Building.

DANIEL LEON ENGLISH
Attorney and Counselor at Law
Brevard, N. C.
Real estate law and abstract of titles a specialty.

ERNEST H. NORWOOD
Architect and Builder
Remodelling and Repairing a Specialty

Clayton, Clayton & Fisher
Attorneys-at-Law
BREVARD, N. C.

WELCH GALLOWAY
Attorney
Practice in all the Courts
Brevard, N. C.

CHAS. B. DEEVER
Attorney-at-Law
Office Cooper Block

ALLISON & ALLISON
Attorneys-at-Law
In O. Cooper Building
BREVARD

COLEMAN GALLOWAY
Attorney-at-Law
Cooper Block
Brevard, N. C.

CONNESTEE LODGE
NO. 237 I. O. O. F.
Meets every Monday night.
Visitors welcome.

DUNN'S ROCK
LODGE NO. 267
A. F. & A. M.