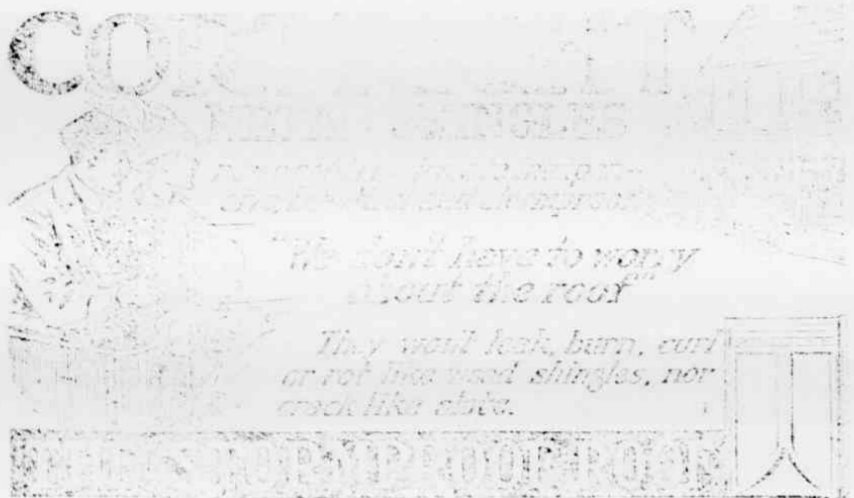


## A HOME destroyed by FIRE

Fire Insurance the only safeguard.  
Is your home insured? Is your business protected?  
You may insure just before the FIRE  
But not one minute after the BLAZE  
The smoke of an hour may carry away  
the earnings of a lifetime.  
The cold autumn winds bring a most  
dangerous season for FIRE.

SEE US  
**GALLOWAY & MINNIS, Agts.**



MILLER SUPPLY CO., BREVARD N. C.



## Is Your Bedroom Cozy?

That spot in which most folks are born and die, that haven where they find rest and intimacy between those two great journeys certainly should be as comfortable, convenient and inviting as taste and means will permit.

### We Specialize

in bedroom furnishings. Our beds are designed for solid, old-fashioned comfort. Our wardrobes, dressing tables, chiffoniers, dressers, clothes chests, and the like, are sure to strike your fancy. And prices?—It is an economy to trade with us.

Our Word Is a Guaranty of Honest Values

**HOME SUPPLY COMPANY**

C. M. COOKE, Proprietor, BREVARD, N. C.

### MONEY SPENT ON HIGHWAYS

Over \$300,000,000 Expended for Construction and Maintenance in United States in 1915.

More than \$300,000,000 was spent on highway construction and maintenance in the United States in 1915. Of this amount 16 Southern states spent approximately \$52,000,000. The state of California has voted \$15,000,000 to be spent in perfecting the state highway system and not a single county failed to give the empowering measure a majority. Ohio is raising of a \$50,000,000 highway bond issue and the state of Illinois will put to its voters at the 1918 election the question of issuing \$60,000,000 in highway bonds, the interest and retiring fund for which is to be provided for by an increase in the motor vehicle registration fees.

Let Us Print  
Your Sale Bills

## Personal Mention

Look through these columns; see if the names of your guests are there. If not, you have neglected your duty toward them. It does not cost anything. Telephone, write or bring your news to News office.

Mr. and Mrs. J. S. Silverstein spent Monday in Asheville.

R. W. Everett of Penrose was a visitor to Brevard on Monday.

County Agent R. E. Lawrence spent Sunday in Greenville.

Mrs. Ida Bryant and Mrs. Barton spent Friday and Saturday in Asheville.

Miss Mary Jane King left recently to enter the Bessie Tift College at Forsythe, Ga.

N. M. Hollowell, former editor of the News, is expected here on a visit the last of the week.

F. D. Clement and son, Ted, went to Charlotte Sunday on business, returning Tuesday night.

Mrs. A. N. Jenkins, with two children, left Thursday for a visit to Mrs. H. L. Steele at Biltmore.

Harold V. Smolberg returned this week from New York city, where he has been for the last ten days.

J. K. Barclay and family have left their summer home at Chestnut Hill and returned to Greensburg, Pa.

Mrs. H. Thos. Shipman, with her son, Hays, left last Friday for a visit of several weeks to her sister, Mrs. J. R. Withers, of Davidson.

Rev. John R. Hay leaves next Monday on a two weeks' vacation, which he will spend with his parents at Liberty Hill, S. C.

The Transylvania County Baptist Association has given an order to the Brevard Printery for the publishing of the minutes of the last meeting.

J. S. Bronfield left recently in his car for Blumont, Va., where his wife and children are visiting. They will be with him on the return trip.

Lewis P. Hamlin, who is now carrying on his law studies in the office of George Smathers, of Asheville, spent the week-end in Brevard visiting friends.

Hilbard Booth returned recently from New York city, where he has been for several weeks attending to the disposal of plays and other literary productions. He was accompanied by his son, DeJing.

C. S. Osborne and J. T. Dean left the first of the week for a three days' squirrel hunt in the forests of Jackson county. During Mr. Dean's absence W. J. Puetto had charge of the Champion Shoe Shop.

Mrs. G. C. Witmer, and daughters leave Monday, to be gone for a few months. Mrs. Witmer and Miss Matilda will go to New York city for the winter season in the metropolis, and Miss Mary will visit friends in Columbia, S. C.

Sam B. Allison, who enlisted in the navy last May, was here visiting recently on leave of absence. He is now a fireman on the United States ship Bridgeport, the converted German vessel, Bremen, and is stationed at Boston, Mass.

Charles Bennett, who went with the last call to Camp Jackson, was given a seven months' discharge to finish his dental studies and be ready for a commission in the medical reserve corps. After a visit home, he left Thursday to re-enter the Atlanta Dental College.

Misses Hattie and Daisy Orr, who left home the latter part of September, are now with their brother, G. L. Orr, at Tacoma, Washington. They expect to remain in the far West for a considerable time, visiting not only at Tacoma, but also at Vance, Washington, where another brother, Clifford Orr, resides.

Ralph B. Fisher left Monday on an extended trip to several southern places. He will stop at Columbia and visit the Transylvania boys at Camp Jackson, and will go from there to Augusta, Ga., where he will be the guest of Percy Verdery at the A. R. C. Academy. After this he expects to visit Jacksonville, Fla., for a few days, and then go to Wrightsville, Ga., where he will act in a legal way in behalf of Will Cannon, charged in this county with bigamy.

The news wishes to express thanks to M. B. Baynard of Brevard, Route 1, for the gift of several very fine Rutabagas, which took second prize at the Fair. They belonged to a crop of 40 bushels raised on one fourth of an acre.

### COLT ATTENTION IN SUMMER

Young Animal Should Be Placed in Dark Stall During Day—Encourage It to Eat Grain.

The colt should be left in a cool, dark stall during the day if the mare is worked, asserts Dr. C. W. McCampbell, associate professor of animal husbandry in the Kansas state agricultural college.

For the first few weeks the mare should be brought to the barn in the middle of the forenoon and the colt allowed to suckle. The colt should be left with the mare at night. Encourage it to eat as soon as possible—preferably cracked oats with bran. If oats are not available a ration consisting of four parts of corn, three of bran, and one of flaked meal by weight may be substituted.

Let the colt have clover or alfalfa hay as soon as he will eat it. See to it that he has access to clean, pure water at all times. If the mare and foal are running in the pasture a creep should be made where the colt can have access to grain.

### Diversified Ads

Are Business Builders

One cent a word for each insertion; each initial or abbreviation counting as a word.

CASH PAID for chickens, eggs, wool and hides. City Market. 9-11-16  
LOGS WANTED—We pay cash. Miller Supply Co. 3-2-16

FOR RENT—Piano at \$3 a month. Apply at once to Mrs. G. C. Witmer. 10-19-16

TOWN LOTS, farms and timber lands for sale. Frank Jenkins, Brevard, N. C. 11-16-16

FOR MILK AND CREAM call on C. E. Osborne, "the Jersey milk and cream man." 10-19-16

FOR SALE—Horse and Mule and Well Bred Pigs. W. L. CARMICHAEL. 11-26-16 tp. Brevard, Route 2.

FOR RENT—Store room in Dunn's Rock building, next to post office. M. M. Chapman or T. H. Shipman. 10-12-16

FOR SALE—A good sized box full of paper scraps, splendid for packing purposes. Call at News Office.

WANTED TO BUY—FARM, not over 500 acres suited to stock. Must have some level. Near high school if possible, also good roads. W. 11-22-16

PIANO AND ORGAN CHEAP—A very fine high grade piano and a sweet toned handsome organ for sale cheap for cash or on easy terms. Write to P. O. box 1558, Richmond, Va.

## ANNOUNCEMENT

The recent War Tax on Theatres and Moving Pictures necessitates an increase in price of admission. The law requires that all children not in arms as well as adults shall pay this tax. The greater part of exhibitors have advanced there 10 cents admission to 15 cents and are keeping the 5 cents admission the same.

Whether we can give you a high class feature at 15 cents remains to be seen, but we shall endeavor to do it. The admission for a time will be adults 15 cents. Children not in arms and under 12 years of age 5 cents.

**Brevard Amusement Co.**  
F. D. CLEMENT, Manager.

## Big Coupon Offer

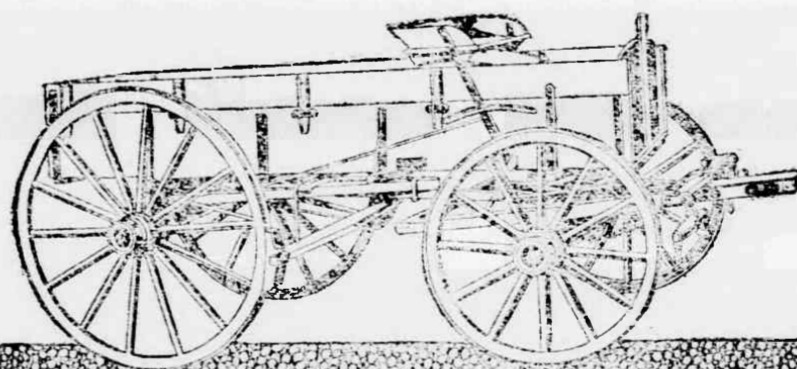
### AT Duckworth Drug Co.

With each 25c cash purchase or for cash on account we will give one coupon. Where you have accumulated 20 of these and return to us with \$1.78 we will deliver to you without further cost a two quart

### ALUMINUM PERCOLATOR

worth \$3.50. If you like your coffee and want to economize and save coffee as well as time, don't fail to get one of these at less than manufacturers price.

## THE NISSEN WAGON



A Southern Made  
Wagon  
For Southern Farmers

### WHAT FARMERS FOUND OUT ABOUT WAGONS

In certain sections of North Carolina wagons are subjected to unusual service.

Over almost roadless mountains, with heavy loads, up steep ascents and down the sides of steep descents these wagons are going daily.

They withstand in this section more use, abuse and strain in a year than most wagons do in a lifetime.

No medicine pains will suffice. The margin of strength must be food and ample.

Right here in this rough section is where our Long Sleeve Steel Spoke proved itself practically unbreakable, and the only spoke consistent with Nissen stability.

And farmers in this section will hardly have any but J. I. Nissen Wagons with long sleeve steel spokes and Mitered Spoke Wheels.

The tough materials from which they are made, the ample generosity in every part, and the use of wrought iron where many makers employ malleable or cast-iron makes them withstand the hardest usage. They are literally the force of war.

We make every part of these Nissen Wagons in our own shops. We know the materials in every part. It is impossible for a wagon materially better to be made.

You may never see your wagon to such strenuous service, but wouldn't you like to have a wagon that resists wear like this wagon does—the wagon that "stands up"? Ask your dealer to show you the famous J. I. Nissen Wagon with Mitered Spoke Wheel. If he cannot supply you, write us for the name of a dealer who can.

The Nissen Wagon Co.  
Winston-Salem, N. C.



## Farmers Supply Company

As now built by the sons of the founder of the wagon industry in the South, it is conceded to be the lightest running, most durable and satisfactory wagon on the market.

It is built in different styles to meet the requirements of all work and all sections where wagons are used.

Here are some points about the Nissen Wagon that the Farmer should consider:

The best material in every part.

No useless and cumbersome parts.

The spokes will not become loose in the hub.

It is light running, durable and built for service.

It is guaranteed to give satisfaction.

Come in and examine the Nissen Wagon.