



Swimming

FRANKLIN

IN THE HEART OF

THE WESTERN NORTH CAROLINA MOUNTAINS

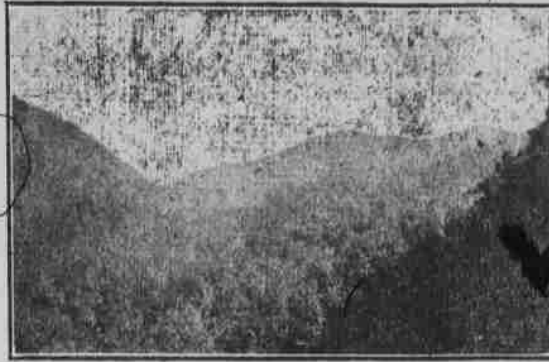


Bait Casting

LOCATION

To him who would find health and inspiration among the cloud-tipped heights, Western North Carolina issues a clarion call. Here rise peaks to an altitude of 6,500 feet, from the summits of which one looks out across a panorama of serried mountain ranges, flashing waterfalls, somber valleys, rushing rivers, which, for sheer beauty, is duplicated nowhere else in the entire South.

Franklin, on the headwaters of the Little Tennessee river, is situated in the very heart of this natural grandeur. Franklin is the terminus of the Tallulah Falls Railway, 58 miles north of Cornelia, Ga., 136 miles northeast of Atlanta, Ga., 70 miles southwest of Asheville, N. C. Franklin is reached over the Tallulah Falls Railway by one passenger train daily, connecting with train coming out of Atlanta at 6:20 A. M. From Asheville Franklin is reached by Southern Railway and daily bus line service from both Dillsboro, N. C., and Bryson City, N. C. By auto over the Asheville-Franklin-Atlanta Highway. In addition to passenger train service, two new seven passenger Studebakers will be used as a double daily bus service from Cornelia to Franklin. This service begins April 1, 1924.



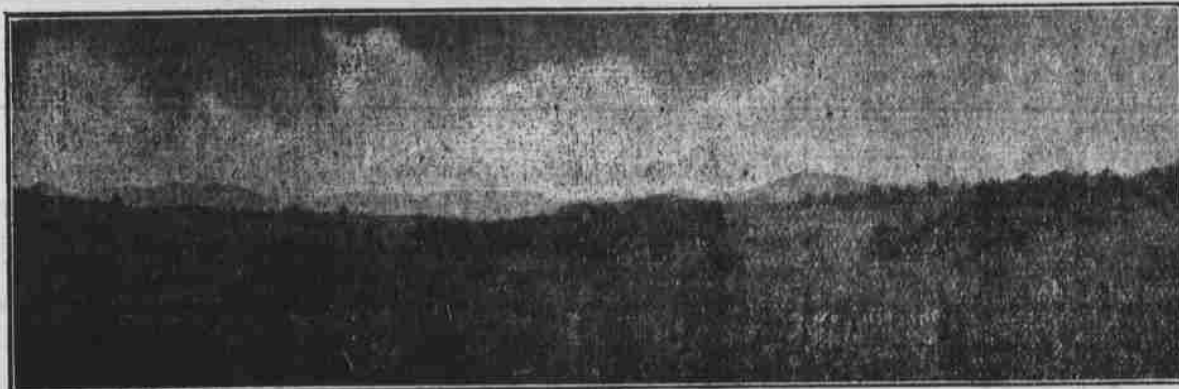
RECREATIONAL FEATURES

Franklin offers many recreational features to the tourist. Our sporty 9-hole golf course is within ten minutes walk from all hotels, and is much used during the season. Good caddie service is always available. A small weekly greens fee is charged for use of the golf course.

Several of the hotels have tennis courts; other courts will be placed at the disposal of tourists without charge. Swimming and horseback riding are also popular, and ample facilities are provided for both.

Our newly-graded highways render motoring through the mountains a real delight. The highway from Franklin to Bryson City, lying along the crest of the Cowee Mountains, furnishes, we believe, the most thrilling scenic effects east of the Rockies. Many natural attractions which were once inaccessible can now be visited by a ride of only a few hours in your motor car. Cullasaja Falls, Burningtown Falls, Wayah Bald (5,400 feet altitude), Cherokee Indian Reservation, Nantahala National Forest (with many miles of scenic trails for horseback riders), are all within short distances and may be reached by auto. These drives offer many superb and inspiring views.

A motor road has recently been completed from Franklin to the top of Trimont Mountain. This road, although only three miles long, gives an increase in altitude from 2,250 feet to 3,700 feet. From this elevation one obtains a broad and comprehensive view of the entire Nantahala and Cowee mountain ranges.



NATURAL ATTRACTIONS IN VICINITY OF FRANKLIN

- Trimont, 3 miles, recently built motor road to top, altitude 3,700 feet.
- Wayah Bald, 20 miles, motor road, altitude 5,400 feet.
- Wine Spring Bald, 19 miles, motor road, altitude 5,500 feet.
- Siler Bald, 17 miles, motor road 15 miles, National Forest trail 2 miles; altitude 5,000 feet.
- Standing Indian Bald, 23 miles; motor road 15 miles, National Forest trail 8 miles; altitude 5,567 feet.
- Rocky Face, 10 miles, motor road, altitude 4,500 feet.
- Satulah Mountain (near Highlands), 26 miles, motor road, altitude 4,750 feet.
- Whiteside Mountain, 34 miles, motor road, altitude 4,900 feet.
- Lower Cullasaja Falls, 12 miles, motor road.
- Upper Cullasaja Falls (Dry Falls), 18 miles.
- Burningtown Falls, 11 miles, motor road.
- Horseshoe Bend view from Asheville-Franklin-Atlanta Highway, one of the greatest scenic attractions in Western North Carolina, 18 miles.
- Numerous public Camp sites and 75 miles of graded trails in Nantahala National Forest.
- Macon County has 17 peaks 5,000 feet and over, and 27 peaks between 4,000 and 5,000 feet altitude.



SUMMER CAMPS

There are two summer camps for girls located near Franklin.

Camp Nikwasi, for girls from 14 to 18, is situated 1 1/2 miles from Franklin, on a beautiful 90 acre wooded tract. New camp buildings with electric lights and running water in each room. Pretty lake for swimming, horses, athletic sports, etc. Season of 1924, July 1 to August 29. For illustrated booklets, rates and other information write Miss Laura M. Jones, Director, Franklin, N. C.

Camp Taukeetah, for growing girls, is situated four miles from Franklin, in the heart of the Carolina mountains. Lake for swimming, horses, athletic sports, hiking—the out-of-doors in its most inspiring form. Season July 1 to August 29. For illustrated folder and other particulars write Miss O. Patton, Director, Franklin, N. C.



ASHEVILLE-FRANKLIN-ATLANTA HIGHWAY

Franklin is on the Asheville-Franklin-Atlanta Highway, one of the scenic highways of the South, lying through the picturesque mountains of North Georgia and Western North Carolina. Not only is this highway the most beautiful from a scenic standpoint, but it is the shortest possible motor route from Atlanta to Asheville, and the only route through the incomparable mountains of North Georgia and Western North Carolina that will be open for motor travel for a period of several years.

INVITATION

Franklin wants the summer tourist. She offers an unsurpassed climate, wonderful scenery, modern conveniences, varied amusements, and a big heartfelt WELCOME that is spelled in large capitals.

For illustrated booklets, maps, folders, hotel list, or information of any character, address

BOARD OF TRADE, FRANKLIN, NORTH CAROLINA

FISHING

The Little Tennessee river runs through the edge of Franklin. This stream, in the fishing line, holds a very unique position; it is the only stream south of the Great Lakes and east of the Mississippi that is stocked with genuine muskellunge. During the "muskie" seasons, spring and fall, fishermen go hundreds of miles for a try at these gamest of all the larger fresh water species. Yet here we have them in Western North Carolina, the real, genuine muskellunge, and in numbers to always insure you a day's sport when you go out after them. Elsewhere in this folder is shown a morning's catch of muskellunge made by Mr. J. W. Roper, of the Western Electric Company. Mr. Roper took these fish within one mile of Franklin on an artificial minnow.

Two of our mountain streams, the Nantahala river (15 miles out) and the Cullasaja river (12 miles out) are well stocked with rainbow trout. On each of these streams a local fishing club has a camp, and controls several miles of stream. Both rivers are patrolled summer and winter, and are restocked each year. In this manner has been built up what we honestly believe to be the best trout fishing in the entire South. The man who can handle a fly will always make a good catch on either the Nantahala or Cullasaja. Tourists are extended the privileges of both camps.

ALTITUDE AND CLIMATE

Franklin's altitude is 2,250 feet. There are no mosquitoes, no malaria, and NO HOT NIGHTS. Our midway situation between the extreme cold of the North and the enervating heat of the South gives us what is, without doubt, one of the best all-year climates in the world. The annual mean temperature of Franklin is approximately 55 degrees. The warmest month is July with an average mean temperature of from 71 to 72 degrees, with the thermometer at night registering in the lower sixties. High above humid, sultry, and less favored sections, isolation is intense during the day and radiation active at night, conducive to sound, restful restful sleep. Close, oppressive periods so common during the summer months in many portions of the country are absolutely unknown here.



Muskellunge

FINTON SCHOOL OF MUSIC

To students of music throughout the South Franklin will this summer offer an unusual opportunity. Mr. Louis Finton, well known New York teacher of piano, for twenty years associated with Letchetizky, assisted by an able corps of teachers, including Miss Edwine Behre, formerly of Atlanta, will hold the summer session of the Finton Music School here, beginning June 1st and running three months. Courses for both artists and teachers will be given. Miss Irene Weaver, one of the Efa Ellis Perfield teachers, will give normal courses during the same period.

Mr. and Mrs. E. C. Kingsbery will turn over their beautiful home, "Summer Hill," to the Finton School. No more ideal setting could be found, we believe, in the whole of Western North Carolina.

For literature, rates, and other particulars regarding the Finton School of Music write Miss Edwine Behre, 45 West 39th St., New York, or Miss Irene Weaver, Franklin, N. C.

MODERN CONVENIENCES

Franklin has 800 population; paved streets; 4 1/4 miles concrete sidewalks; electric light and power plant; municipally owned waterworks; bakery; ice manufacturing plant; public library; up-to-date moving picture theatre; chapters of leading fraternal organizations; modern fire department; two dairies, making deliveries twice daily; local and long distance telephone service; improved public camp ground; six doctors, three dentists, eight lawyers, two hospitals; five tourist and two commercial hotels; numerous boarding houses; four modern churches, Methodist, Baptist, Presbyterian, Episcopal; high class retail mercantile establishments, supply houses, garages, etc.

WATER SUPPLY

Franklin's city water is electrically pumped from a drilled well 231 feet in solid rock. The supply is more than adequate, and analysis shows that there is no purer and more healthful water in the world.



Falls



Trout Pool