

### Classified Ads and Legals

**RATES:** One cent per word per insertion, minimum of 35¢. Cards of Thanks, one cent per word, 50¢ minimum. Resolutions of respect, memoriams, obituaries, one cent per word.

**ALL ABOVE ADVERTISING STRICTLY CASH IN ADVANCE**

**CONCRETE BLOCKS** for building homes, stores, barns, garages or foundations. Sold at plant or delivered. Call or write W. A. Hays, below bridge in Franklin. Phone 903, Highlands, N. C. 6-21tf

**FOR MONUMENTS** See Sylva Memorial service next to Ritz Theatre on Main Street, Sylva, N. C. Mar 20 tf

**FOR SALE—1943 GMC** 2½ ton 6 x 6 truck. Can be seen three miles up on Cope Creek. Call or see Harold T. Greer, Sylva Hotel, phone 15. 13\*-14\*

**FOR SALE—5-room house**, wired for electric stove, 1½ blocks from Main street. Would like to sell at once, will give possession at time of sale. See Mrs. B. F. Reed or Frank Crawford at Jackson County Bank. 13-14\*

**THE TRUTH about Catholics** . . . Is the Catholic church really Catholic? You should know the REAL FACTS. Write for free information to Box 305, Whiteville, N. C. 10-19

#### Notice To Public

This is to notify all persons that the undersigned will not be responsible for any debts except those contracted by herself.

This the 22nd day of Aug., 1947.  
MRS. AMY BRYSON,  
Cherokee, N. C.

#### Help Wanted, Female Registered Nurse

Prefer single girl or woman experienced, for position at Fontana Village, North Carolina in Medical Facility manned by 1 Doctor and 2 Nurses for permanent residents and resort guests. Come direct to Fontana for interview, or write Assistant Resident Manager, Fontana Dam, North Carolina.

#### Samuel M. Edwards Qualifies For Duty

Samuel M. Edwards, husband of Mrs. Nellie Francis Edwards of Webster, N. C., has qualified for Supply Corps duties afloat and ashore after completing a course of instruction at the Naval Supply Corps School, Bayonne, N. J.

Supplies of chicken meat in the second half of 1947 will be below last year. Prices may decline from present levels this fall, and there will be fewer turkeys for the coming holidays.

According to an announcement from the USDA, hog prices are expected to continue high until marketings of pork increases in the fall.

### Gifts For The Bride

STERLING

GORHAM'S GREENBRIAR . . . INTERNATIONAL PRELUDE

CRYSTAL

Heisey's Orchid

HAVILAND CHINA

Available in October

Lilius Jewelry Company

RITZ BUILDING

SYLVA, N. C.

### Juvenile Education Insurance

- No need to worry about your child's college education if you provide for him a JUVENILE EDUCATION INSURANCE policy. It is much more economical to begin his insurance while he is young.
- We will be glad to have you call for an interview and let us explain fully this opportunity for you as well as your child.

Mrs. John R. Jones

Phone 156 or 0903

Sylva, N. C.

### SOCIETY

#### Young People Enjoy Social In Love Field

Last Wednesday evening Misses Juanita Norton, Ethel Haskett and Nola Higdon were hostesses at a social in Mr. Dennis Hidon's meadow. Several interesting games were played and a debate, "Resolved that the word 'Obey' should be taken out of the marriage vow" with Mary Vance taking the affirmative and Hayes Conner the negative. The decision was rendered in favor of the negative side. Boone Jackson from East LaPorte and Jo Retta Montieith were looking for the hidden treasure, but before leaving they caused much fun by Boone dressing in woman's full attire and Jo Retta in a man's costume. This was very amusing to everyone. Lemonade, cookies, and marshmallows were served to the fifty persons present for the occasion.

#### Jessica Buchanan Observes Birthday

Little Miss Jessica Buchanan entertained several small guests on Saturday afternoon, August 30, at the home of her parents, Mr. and Mrs. Jesse Buchanan, the occasion being her third birthday anniversary. Several games were enjoyed by those present and a delicious sweet course was served. The children were given paper hats and balloons as favors.

Children making up the guest list were Judy Campbell, Nancy Gail Corbin, Phyllis Ann Woodard, Nancy Brown, Lydia Belle Bryson, Gail and Margaret Painter, and Sybil Warren; Eddy Baldrige, Jimmy Crawford, John Herbert and Roy Allison Bryson, Dan Edward Fincannon, and Keith Campbell.

#### Mrs. Montieth Hostess For Legion Auxiliary

On Friday evening Mrs. O. E. Montieth was hostess for the August meeting of the William E. Dillard unit of the American Legion auxiliary. The president, Mrs. Dan Tompkins, presided over the business session.

The chapter voted to give a donation of \$25 to be used as relief for the children of needy veterans. It was announced that all dues should be paid at the September meeting.

The guest speaker for the meeting was Mrs. Clarence Bales of Robbinsville, a charter member and officer of the William E. Dillard unit which was organized in 1924. Mrs. Bales told about its organization and some of its early activities. She then made a most informing talk on Universal Military Training as proposed by the American Legion.

Peggy Jo Sutton, one of the girls sent by the local unit to Girls State at Greensboro college last spring, made a report on her stay there. The auxiliary is very much pleased with the work done at Greensboro by Miss Sutton and Miss Mary Soderquist, also sent by the unit, from Sylva High this year. Plans are to send two other girls from another high school in the county next spring.

Special guests at the meeting were Mrs. David Hall and Mrs. Ellen Bryson, two charter members of the William E. Dillard unit. Mrs. Montieth served a salad course to her guests.

Record slaughter of cattle and calves is in prospect for 1947 which will result in a sharp reduction in the numbers of cattle and calves on farms.

Strong demand and prospects for smaller output is likely to keep farmers' prices high in the next few months, according to BAE.

July crop reports pointed to a two percent smaller production than in 1946. The wheat crop is a record and several other crops will be large.

### Variety of Salad Recipes

By BETSY NEWMAN  
DO YOU vary your salads as you do meat dishes, fish, vegetables, etc.? With a vegetable pan in your refrigerator to keep vegetables cold and crisp, a few tins of shell fish, fish, pimientos, etc., on your pantry shelves, you can whip up a salad—and vary them too—very easily. When it is summer, however, and fruit as well as vegetables are plentiful, the salad possibilities become more numerous. Today I'm donating some ideas on the subject of salads.

**Today's Menu**  
Fish or Macaroni and Cheese  
Panned Cabbage Salad  
Molasses Squares Coffee

**Molasses Squares**  
1 c. sifted flour ½ tsp. baking soda  
½ tsp. salt ¼ c. brown sugar, firmly beaten  
¼ c. molasses packed into cup  
Mix and sift flour and salt; add shortening to molasses and stir over low heat for 2 min., until shortening is melted. Add soda and sugar, stirring well until sugar is dissolved. Cool. Add well-beaten egg and sifted dry ingredients and mix well. Bake in a greased 9-inch square pan in a moderate oven (350 F.) about 30 min. Cut in 2-inch squares. This amount makes about 30 squares. Nutmeats or raisins may be added for a richer mixture.

**Asparagus Salad**  
6 rings cut from French dressing  
green pepper 24 stalks cold  
¼ tsp. tomato boiled asparagus,  
catsup fresh or  
Lettuce leaves canned

Cut pepper rings about ¼ inch wide. Slip four stalks of cold asparagus through each ring and arrange on crisp lettuce leaves. Place each serving on a salad plate or arrange attractively on a platter with serving spoon and fork. Serve with French dressing to which tomato catsup has been added. Serves 6.

**Lettuce and Onion Salad**  
2 lettuce hearts 1 Spanish onion  
French dressing

Strip off and set aside for some other purpose the green leaves of the lettuce; wash hearts, pull them to pieces or cut into sections, and drop into ice water to crisp. Peel the Spanish onion and cut it into thin shavings. Shake the lettuce in a colander or wire basket to free it from water or dry on a towel (putting it into a cloth bag and whirling bag around a few times will also dry it satisfactorily). Fill the salad bowl with alternate layers of lettuce and onion slices, sprinkling each layer with a little French dressing.

**Pear Salad**  
3 pears Few finely chopped nut meats  
Cream or cottage cheese Lettuce leaves  
Strips of pimento or green pepper French dressing

Peel, cut pears in halves and core. Fill core space with cream or cottage cheese with which you have blended a few of the chopped nut meats. Serve on lettuce leaves, with French dressing or any other dressing you prefer, and garnish with strips of pimento. Serves 3. Fresh peaches could be used in place of pears.

pays for when she buys the article. After reading all labels, cards or booklets that come with new equipment, put away any printed directions or guarantees in a safe place. It is wise to keep a record of the place and date of purchase, and the name and address of the manufacturer.

A cotton square does not have to be but five days old before it is subject to attack by the boll weevil.



AT A CONTEST in Long Branch, N. J., Dolores Mendes, 18, of Newark, was chosen "Miss New Jersey." Dolores, who sings and plays the guitar, will represent New Jersey at the annual "Miss America" beauty pageant to be held next month at Atlantic City. (International)

### STATE COLLEGE HINTS TO FARM HOMEMAKER

By VERNA STANTON  
Assistant State Agent

Act quickly if you spill acid on your dress or any other fabric, warn textile chemists of the U. S. Department of Agriculture. Even a fairly mild acid like lemon juice or vinegar may change the color or damage the cloth.

First, rinse the stain several times with cool water to stop the action of the acid. Then apply baking soda or ammonia water. Water alone may not restore color, but ammonia may. If soda is used, sprinkle it on both sides of the stain, moisten with water and allow to stand several minutes. Then rinse well with water. If ammonia is used, hold the dampened stain over an open bottle of strong ammonia water.

Read before using is an obvious but often neglected rule for getting your money's worth in service and satisfaction from any new household equipment, home economists of the U. S. Department of Agriculture remind housewives. Careful reading of every word of print that comes with a new article, large or small, is well worth the housewife's time, especially today when new designs, materials and finishes are coming on the market. A few minutes of reading in advance of using may save costly repairs or poor service.

Manufacturers go to considerable trouble to print advice on the proper care and use of their products. The woman who discards all printed matter as "just advertising" or because she thinks she knows enough without reading may be throwing away money. The printed advice is part of what she

### Beta P.T.A. Has First Meeting

The Beta Parent Teacher Association held its first meeting of the new school year on Monday afternoon, Sept. 1, in the school lunch room. Twenty-three members were present.

Mrs. Allen Ginn, president, was in charge of the meeting. In giving her plans for the year Mrs. Ginn stated, "We are hoping for a most successful year in our P.T.A. work of the Beta graded school."

During the business hour the following committees were named: membership, Mrs. Maxine Punnell, chairman, Mrs. West Barnes, Mrs. Carrie Ward, and Mrs. David Paris; hospitality, Mrs. Florence Smith, chairman, Mrs. Ed Erwin, and Mrs. Frank Bumgarner; publicity and reporter, Mrs. Eloise Kirkpatrick. It was decided to give \$1.00 to the room having the most mothers present at each monthly meeting of the P.T.A. Mrs. Hensley's room was the winner at the September 1 meeting.

Other officers of the association include besides Mrs. Ginn, president, Mrs. Florence Smith, secretary, and Mrs. Roy Reed, treasurer. It was voted that the first Monday of each month would be the regular meeting day of the association. Refreshments were served by the Beta 4-H club girls.

It is extremely important to get collars that fit the horse or mule, and then be sure that hames are the right size for the collar.

#### Odd Fact

A Bronx woman had her handbag snatched by three boys who tossed it away when they found it apparently contained nothing but a pair of gloves. In the fingers of the gloves the woman had hidden \$1,410, later found intact.

### LOOKING BACKWARD

From the Files of The Ruralite of 15 years ago

The North Carolina 1947 spring pig crop totaled 831,000 head, an increase of 6 percent over last year.

Custom rate for combining wheat in North Carolina averaged \$3.90 per acre in 1945, compared with \$2.90 in 1938.

In 1938, North Carolina oat producers harvested 12 percent of their oat acreage with combines, in 1945, 44 percent of the oat acreage was harvested by combines.

High prices received by North Carolina farmers on June 15 for cotton, meat animals, and poultry products, pushed the index for all farm products to 261 percent of the 1910-14 average.

To avoid sore necks or shoulders, each work animal should have an individual collar, kept exclusively for that animal.

### WOODMEN OF THE WORLD

Life Insurance Society

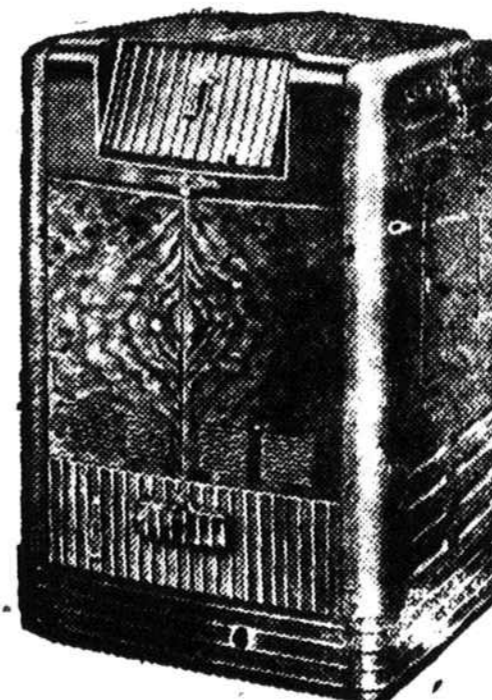
Fraternity Protection Service

BRITTON M. MOORE  
Sylva Representative

Sylva, N. C.

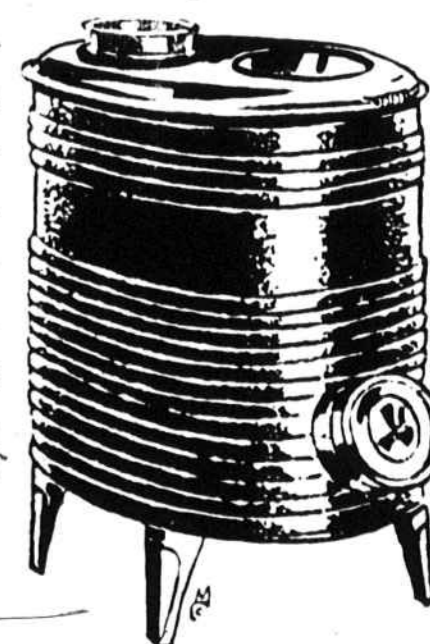
## Do The Wise Thing Now!

CONSTANT COMFORT



This beautiful Cabinet type WARM MORNING heater will give you perfect comfort—24 hours a day.

FOR QUICK HEAT

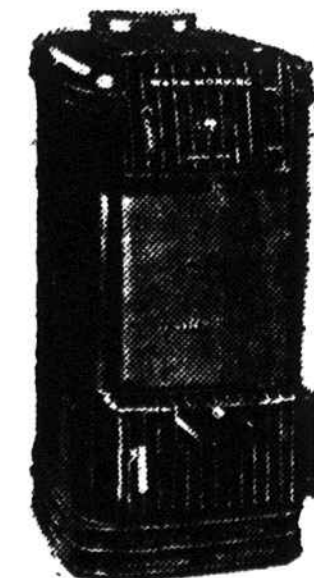


Use one of our fine heavy sheet iron wood heaters. Burn in it any type of wood.

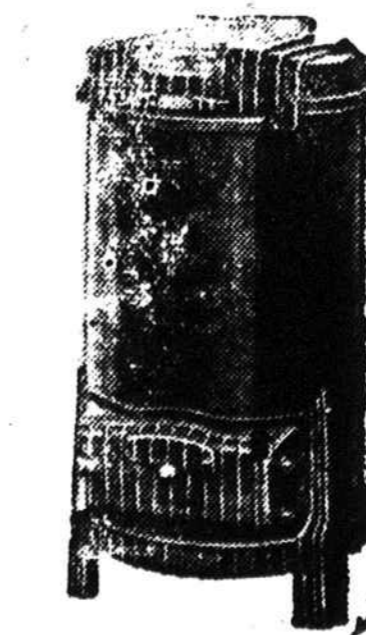


FINE FOR KITCHEN OR LAUNDRY

Our laundry heaters are fine for the kitchen or laundry. Easy on fuel.



FOR SMALL HOME



YOU KNOW THIS STOVE

for economy in price and fuel there is none better than this type of WARM MORNING.

This type WARM MORNING is ideal for a small home . . . holds fire 24 hours a day.

MANY OTHER TYPE STOVES AND HEATERS IN STOCK FOR EVERY SIZE HOME, SHOP OR BUSINESS . . . BUY BEFORE PRICES ADVANCE.

"Your Credit Is Good With Us . . . Use It"

FOUR FLOORS OF FURNITURE

## Jackson Furniture Company

"EVERYTHING FOR THE HOME"

SYLVA, N. C.

PHONE 128