

Mrs. Buchanan Attends Library Association Annual Convention

Mrs. Lillian B. Buchanan, librarian of Western Carolina Teachers college, is attending the annual convention of the American Library Association in Atlantic City June 13-19.

She is especially interested in attending the special sessions of Teachers College librarians, at which outstanding library architects will be present.

While on her trip Mrs. Buchanan will also attend, on June 17, an Alumni dinner of Columbia University's Library school, from which she received her B. A. Degree in 1939 and her M. A. in 1944. On June 15 she will attend the Newberry-Caldecott Prize dinner at which the American Library Association will present the Newberry prize and medal to the author of the best book for children written last year, and the Calde-

GAY NEWS

Mrs. J. C. Browning has returned from Cramerton where she visited her daughter, Mrs. Jack Collins, for a week.

Monroe L. Wilson, Charlie R. Wilson, Charlie Cope, and Mrs. Leonard Cope motored to the Veterans' hospital at Swannanoa for a visit with Mr. Leonard Cope who has been a patient there for sometime.

Mr. J. C. Browning was the dinner guest of Mr. and Mrs. Walter Wilson.

Mr. and Mrs. Quinton Bishop spent the week-end with Rev. and Mrs. Joe Bishop.

Miss Lorina Bishop, who has completed her training at the Mission hospital, Asheville, spent the week-end with her parents, Mr. and Mrs. Dave Bishop.

Mrs. A. C. Allison and little grandson, Jerry Cope, were the dinner guests of Mr. and Mrs. Mann Woodard Sunday.

The most attractive thing we have in our community is the spring of Mr. and Mrs. Eldon Watcote prize for the best illustrated children's book of last year.

Movie To Be Shown On Cancer Control

The Cashiers and Glensville Home Demonstration clubs will sponsor a health project on cancer control at the Glensville high school at 3 p. m. Tuesday, June 22. The pictures to be shown are: "Mr. William Goes to Town," "Choose to Live," "Miracle Money", and "Traitor Within".

The public is cordially invited to attend.

PIANO BARGAINS

Nice selection of new ESTEY SPINET PIANOS

\$100 Discount for 30 days.

Also carload of Factory Rebuilt Pianos. Small cases, Standard Makes, fully guaranteed, easy terms, no interest or carrying charges. Drop us a card. We deliver anywhere.

MAGNESS PIANO CO

Forest City, N. C.

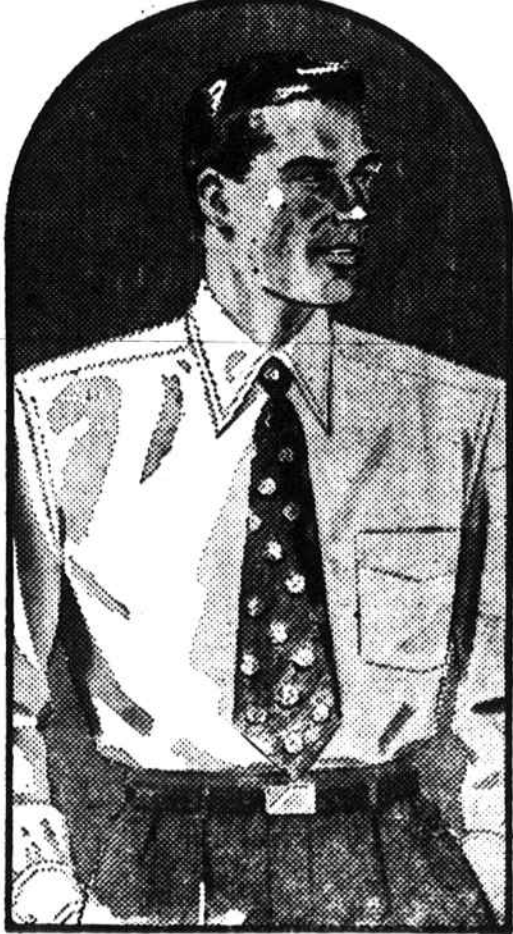
FATHER'S DAY

JUNE 20TH

Gift Suggestions at The Men's Store

WINGS SHIRTS

with **Aeroplane Cloth Collar**



Our Father's Day Gift Suggestions are Value-Packed. Male-Minded Wearables that DAD would select himself, but would rather get as a gift from you. We've casual, comfortable clothes for loafing-finishing touches for his business apparel in famous names that DAD knows and swears by. B.V. D. and Wings Sport Shirts, long and short sleeves - solid colors and checks. Pajamas, robes, socks, Wimbley ties in wool, silks and knits. SWANK Jewelry that he will be proud of. And he will be doubly pleased if you choose his Gift at

Collar Guaranteed to Outlast the Shirt

This is it...the Aeroplane cloth collar for which WINGS shirts are famed! So strong that it will resist laundering and outlast the shirt where it wears out fastest . . . at the collar. And your smartly tailored WINGS shirt is cut full, to give you all the roomy comfort you want. Sanforized, too (maximum shrinkage 1%).

\$3.50

Tune in William L. Shirer every Sunday (time) (station)

The Men's Store

Main Street

Sylva, N. C.

son of the Zion Hill section. The spring is about 75 feet from the house but no trouble to get a nice cold drink. They send the bucket down on a wire and have a windlass that you work with your hand in bringing the pail of water back. No trouble, and cold water any time you wish.

Meat production in 1948 will probably be around 10 per cent less than the 23.4 billion pounds produced in 1947. This expected total output will be the smallest since 1941 but larger than in any year before that.

REECE-HAMPTON TO SHOW NEW FORD CARS FOR FIRST TIME FRIDAY, 18TH

(Continued from page 2)

tioned, contribute to smoothness of operation. These include the new cooling system, intake manifold, redesigned combustion chambers and improved crankcase ventilation system as well as other features.

The 114-inch wheelbase, convenient for parking and in moving through heavy traffic, has been retained.

The new six develops 95-horsepower, providing better acceleration in passing and heavy traffic.

The V-8 develops 100-horsepower. OTHER FEATURES — Interior styling is colorful and practical. Traditional, neutral-toned automobile fabrics have been discarded for new tweeds, broadcloths and mohairs which retain the ability to absorb hard family usage.

Hardware is massive and attractive. Door handles and other hardware are much easier to operate. The doors have new type locks which eliminate all possibility of persons being locked out of the car with the keys inside.

The flight panel dash provides centralized grouping of instruments for quick, easy reference in line with the driver's view of the road. Fuel level, oil pressure, water temperature and battery charge indicators are placed outside the rim of the speedometer. The glove compartment on the right hand side has been enlarged.

Chrome trim, both inside and out, has been reduced.

There are two lines of cars, the Ford and the Ford Custom. Both styles in both lines include the 4-

door sedan, two door sedan and club coupe. Convertible and station wagon models are obtained only in the Custom line and the three passenger coupe only in the Ford line.

There are eight durable new exterior colors—Bayview Blue Metallic, Birch Gray, Sea Mist Green, Arabian Green, Colony Blue, Gun Metal Gray Metallic, Midland Maroon Metallic and Black.

Two additional colors—Faz Red and Miami Cream—are available in the convertible only.

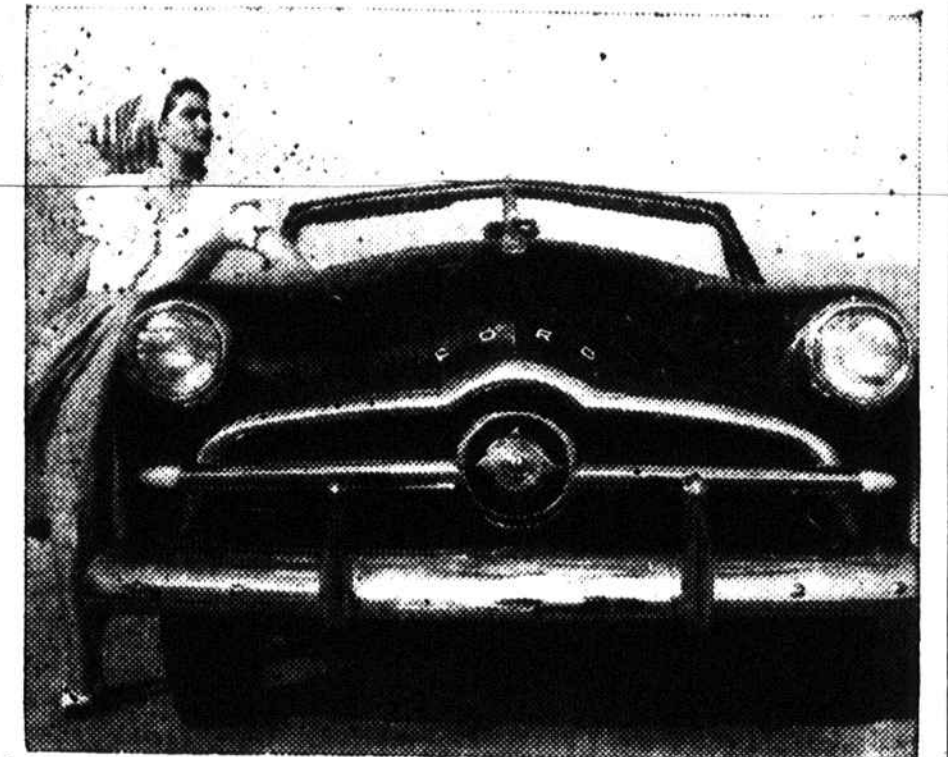
PRESENTING IN PICTURES

the 1949 FORD

CAR OF THE YEAR—



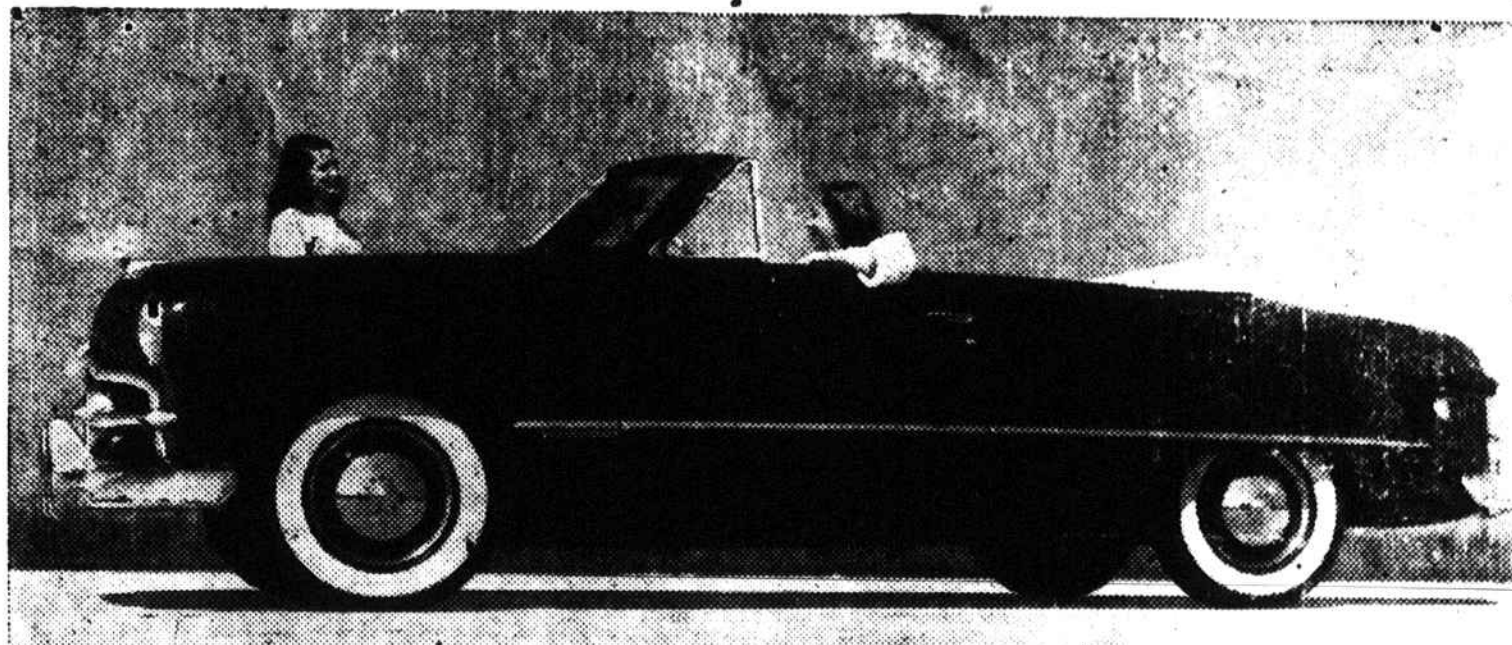
The revolutionary new Ford four-door sedan for 1949 is lower, wider, roomier and provides nearly 25 per cent more visibility.



The smooth, flowing lines of the 1949 Ford passenger cars are accented by the simplicity of the air-coop grille. Fresh air for the pressurized ventilation system also enters through the grille.

SEE and DRIVE IT June 18

AT OUR SHOW ROOMS



The distinctive styling of the 1949 Ford convertible features smooth, flowing contours, full fender-width body and luxurious interior appointments. Completely new, the convertible chassis is doubly reinforced.

TWO SIZE MOTORS

V-8

6

100 HORSEPOWER

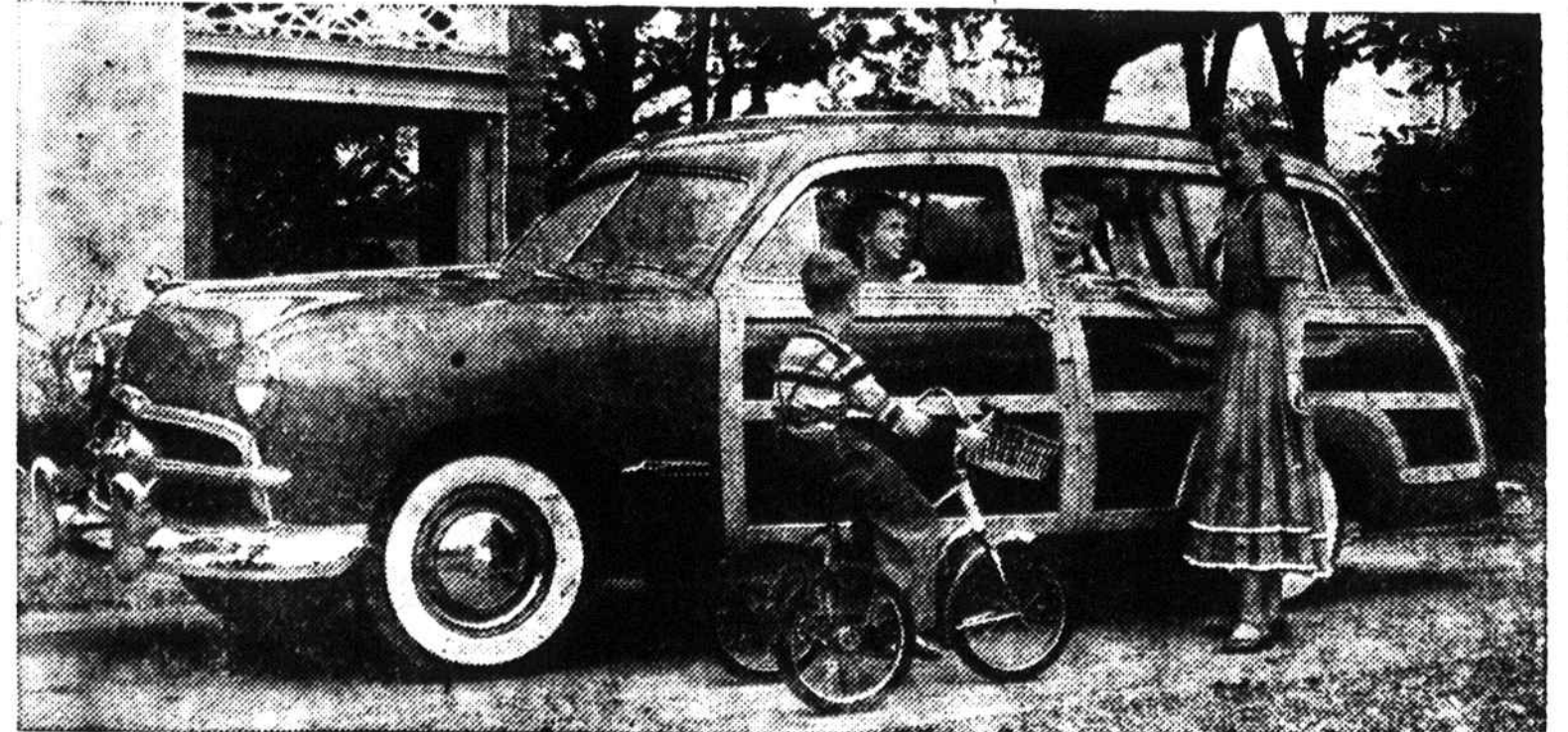
95 HORSEPOWER

239 CUBIC INCHES

226 CUBIC INCHES

COMPARATIVE SPECIFICATIONS

	FORD FOUR-DOOR SEDAN	
	1948	1949
Wheelbase	114 Inches	114 Inches.
Curb Weight	3414 Pounds	3175 Pounds.
Overall Length	196.08 Inches	196.75 Inches.
Maximum Width	73.25 Inches	71.7 Inches.
Height, Loaded	66.15 Inches	62.75 Inches.
Tread—Front	58 Inches	56 Inches.
Rear	60 Inches	56 Inches.
Brake—Type	Hydraulic	Hydraulic.
Front Spring	Transverse Leaf	Independent Coil.
Rear Spring	Transverse Leaf	Longitudinal Leaf.
Drive	Torque Tube	Hotchkiss.
Differential	3-4-Floating Spiral Bevel, 4 - Pinion Differential.	Semi-Floating, Hypoid, 2-Pinion Differential.
Tire Size	6.00 x 16	6.00 x 16.
Front Seat Width (Hip Room).	55.3 Inches	61.5 Inches.
Front Seat Shoulder Width.	54.25 Inches	57.2 Inches.
Width of Body at Center Pillar.	55.6 Inches	61.0 Inches.
Rear Seat Hip Room.	51.5 Inches	60.0 Inches.



The 1949 Ford station wagon is new and revolutionary in every respect. It is the first to use two extra-width safety doors; the first full size eight-passenger wagon to employ all-steel construction. Wood panels are bolted directly to the steel frame. Extra strength built into chassis and body assure trouble free operation.

REECE-HAMPTON MOTOR CO., INC.

PHONE 30

WOODY R. HAMPTON, Manager

CULLOWHEE ROAD