

Pipe the Pooch!



NOTHING could be doggier than a pipe-smoking pooch, rigged out in a huge bow-tie and wearing the look of an expectant prize-winner. The pup appeared at the Miami, Fla., Dog Show. (International)

Wife Preservers



When you are buying an electric iron, try it for weight. An iron weighing no more than four pounds saves energy in lifting.

It Happened HERE AND THERE

How long should it take evolution to grow web-footed humans? If padding about in the rain helps, well, it won't be long now!

Any fact in the rumor that Ralph Smith is considering becoming a preacher?

If you happened to notice Joe Poppewell waving his arms about up on the square the other day, he wasn't preaching—just directing the placing of that new sign and clock atop his building.

Little groups of two or three here and there on the street with their heads together—must be that election time is growing near.

Overheard—about as many different ideas on the Wednesday afternoon closings of the stores as there are people discussing it.

Household Hint

Adhesive mending tape makes an easy-to-apply carpet binding for worn edges.

Read Herald Want Ads.

Beta P. T. A. Presidents Honored



Darrington, Wash. News

By G. W. Clayton

Our weather has changed at last. It is much warmer and now it is raining and melting this snow. Boy, will the ground look good to us again. If it should turn real warm and the wind start blowing everything on the old Skaget River would wash away. Of course, it may do just like it did last year—go away slow. Then everything will be O.K. We sure hope it does.

Our roads and streets are getting pretty bad. I have been wondering what was the coldest weather any of you old timers could remember having back there in Jackson county? It was 14 below here on January 25th. Now I want to tell you—that is COLD.

I can remember seeing Scotts Creek frozen when I was a boy, but I don't remember how cold it was then. I will find out how much snow has fallen here this winter and let you know later. When it gets a little warmer the

Shown above are the past and present presidents of the Beta Parent-Teacher Association. Reading left to right, Mrs. Milas Ward, Mrs. Joe Davis and Mrs. Allen Ginn, past presidents, and Mrs. Joe Clyde Fisher, present president.

snow will start sliding on White Horse Mountain. Sounds like low thunder, tons and tons of snow in motion. At times, if there is no fog, we can see it.

But with all the bad weather, folks, this is the prettiest place yet. It won't be long till we can hear the timber falling, the Donkey winch, the logging trucks roaring, and we will be on the job, drawing those pay checks and forget what a rough winter we had.

The people have been blessed with good health in spite of the weather, not even many colds.

Why don't you people write more often to our paper?

HAVE YOU RENEWED YOUR SUBSCRIPTION?

These officers were honored in a special anniversary meeting on February 1 in observance of the sixth anniversary of the organization. Past president's pins were presented Mrs. Ward, Mrs. Davis and Mrs. Ginn by Mrs. Gertie Moss.

SYLVA DRIVE-IN THEATER At The Airport

12 shows each night. 7 p.m. and 8:40. Adults .40. Children under 12 free.

THERE WILL BE NO \$1.00 PER CAR NIGHTS IN THE FUTURE.

Section reserved for colored

Thursday and Friday BEAUTIFUL BLONDE FROM BASHFUL BEND

In Technicolor Starring: Betty Grable and Cesar Romero. A good comedy.

Saturday EACH DAWN I DIE

Starring James Cagney and George Raft. Also comedy.

Sunday and Monday HELLZAPOPPIN'

Starring Olsen and Johnson, Martha Ray and Hugh Herbert. With that cast, something has to pop. Also comedy.

Tuesday - Wednesday SOUTH OF PAGO PAGO

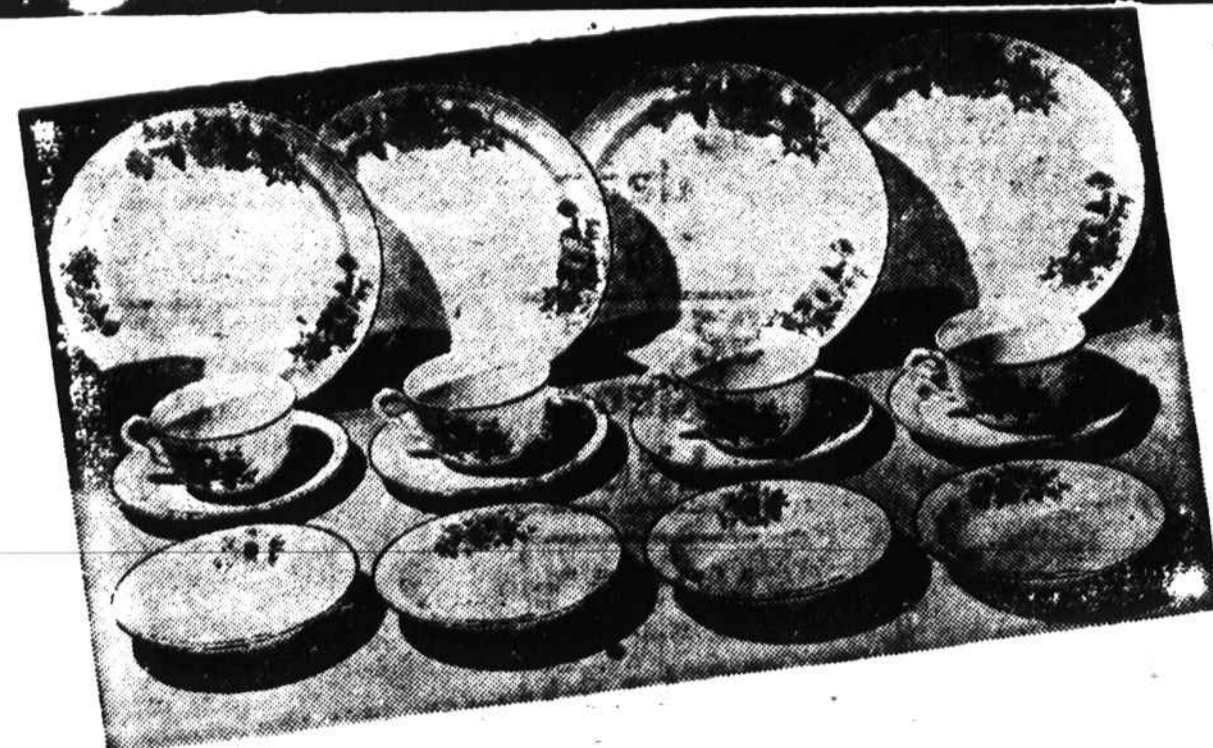
Starring Jon Hall and Frances Farmer. A good South Sea island picture. Also comedy.

Thursday - Friday TRADE WIND

Starring Joan Bennett and Frederic March.

There is a surprise in store for you next Saturday—be sure to read the ad.

DIXIE-HOME OFFERS Opportunity of a Lifetime!!



HALL CHINA Springtime Pattern

at a saving of 40% with purchase card obtainable at Dixie-Home Stores.

16 Starter Set only \$3.99

SMOKED PICNICS 4 to 8 Lb. Sizes 33c

For Economical Baking Rose Royal Flour 25-Lb. Bag \$1.65

Shortening SNOW DRIFT 3-Lb. Can 75c

Dixie-Home MAYONNAISE Pint Jar 31c

Alaska PINK SALMON No. 1 Tall Can 37c

Del Mar NIBLET'S CORN 2 12-oz. Cans 27c

LIBBY'S CANNED MEAT

VEAL LOAF 7-oz. can 27c LUNCH TONGUE 1/2 can 31c DEVEILED HAM 1/4's can 18c BRAINS 10 1/2-oz. can 27c Potted Meat 2-1/2 cans 27c

Junket Quick FUDGE 12-oz. Pkg. 30c

Pure Vegetable WESSON OIL Pint Bot. 27c

SWIFT'S Cleanser 2 Cans 23c

U. S. Good Best CHUCK ROAST Lb. 49c

Small Lean SPARE RIBS Lb. 39c

Pinky Pig PORK LINK SAUSAGE Lb. Carton 49c

Smoked Center Cut Economy Cut HAM Lb. 89c Lb. 69c

Big Tender GREEN GIANT PEAS No. 303 Can 20c

Dixie-Home PEANUT BUTTER Lb. Jar 35c

Red Sour Pitted CHERRIES No. 2 Can 25c

Southern Gold MARGARINE 1/2 Lb. Colored Sticks Lb. 36c

Campbell's VEGETABLE SOUP 2 No. 1 Cans 25c

Delicious with Chicken Ocean Spray CRANBERRY SAUCE No. 300 Can 15c

Veri-Best Produce

Extra Fancy Carolina YAMS 4 Lbs. 30c

U. S. No. 1 Irish POTATOES 10 Lbs. 35c

Fancy Florida Pole BEANS 2 Lbs. 21c

Fresh Green COLLARDS Large Bunch 10c

Fresh Mustard or TURNIP GREENS Lb. 10c

ROME BEAUTY BAKING APPLES 3 Lbs. 23c

Fancy Yellow Crook Neck SQUASH Lb. 10c

Crisp California Iceberg LETTUCE 2 Heads 25c

Extra Large Juicy LEMONS Doz. 29c

LUX FLAKES Large Pkg. 25c	IVORY Soap 2 Large Bars 25c	LUX Toilet Soap 3 Reg. Bars 22c
RINSO Powder Large Pkg. 25c	DIAL Soap Reg. Bar 25c	PALMOLIVE Soap 3 Reg. Size Bars 21c
PALMOLIVE Soap Bath Size Bar 10c	LIFEBUOY Soap 3 Reg. Bars 21c	CRISCO Shortening 3 Lb. Can 75c

DIXIE-HOME SUPER MARKETS

As advertised in MADMOISELLE



Cobbie in genuine Cobra only \$10.95

Feel the softer, smoother difference in this hand-selected reptile. And just see how graceful and flattering—this young sandal with its slim ankle strap and lofty wedge. Fit-Tested, of course.

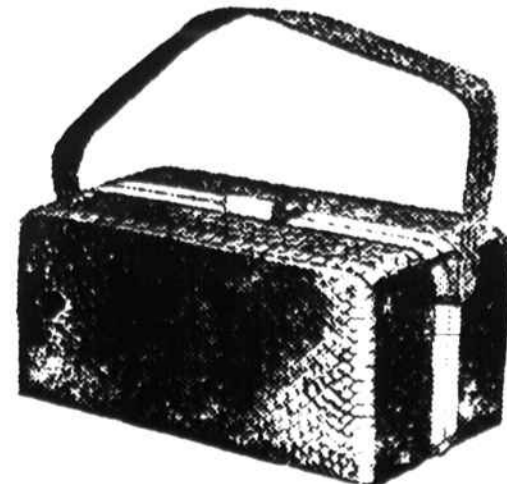
Red Cross Shoes

America's unchallenged shoe value \$8.95 to \$10.95

This product has no connection whatever with The American National Red Cross



Matching handbags of genuine cobra... only \$10.95 plus Federal Tax



SCHULMAN'S DEPT. STORE Style Center of Sylva