

STATE COLLEGE FARMER'S AID

QUESTION — Do you advise planting round grains of seed corn?

ANSWER — The round kernels are just as good for planting as flat ones — and a lot cheaper. So says Dr. F. J. Bell, seed and small grain specialist for the State College Extension Service. Actually, asserts Dr. Bell, the round kernels which grow near the end of the cob contain the same germ plasma, have the same germinating ability, and will produce just as good stands as flat kernels grown toward the center of the cob. Since the round grades sell at considerably lower prices, farmers can save money by purchasing this type of seed corn. The grower will need a different type of seed drill plate from that used with flat kernels, but this equipment can be bought very easily and at small cost. Dr. Bell says corn planters at one time came equipped with flat grades only. Now, he adds, plates may be obtained for round grades also, and there is no reason why a farmer should hesitate to plant this type of corn.

QUESTION — Where can I get information on how to control insects in tobacco plant beds?

ANSWER — This information is given in Folder No. 76 of the State College Extension Service, copies of which may be obtained free from the local county agent or by writing the Agricultural Editor, State College Station, Raleigh. The title of the folder is "Tobacco Insect Control in North Carolina." It includes three tables — one for insects in plant beds, another for insects attacking newly transplanted tobacco, and a third for those attacking older tobacco.

The world food situation generally continued to improve in 1949 and at the beginning of 1950 food consumption in most deficit areas was at the highest level since the war.

GLENN FUNERAL HOME
BURIAL INSURANCE
Phone 65 . . . Sylva, N. C.
8:28tf

WOODMEN OF THE WORLD
Life Insurance Society
Fraternity Protection Service
BRITTON M. MOORE
Sylva Representative
Sylva, N. C.

How To Relieve Bronchitis
Creomulsion relieves promptly because it goes right to the seat of the trouble to help loosen and expel germ laden phlegm and aid nature to soothe and heal raw, tender, inflamed bronchial mucous membranes. Tell your druggist to sell you a bottle of Creomulsion with the understanding you must like the way it quickly allays the cough or you are to have your money back.
CREOMULSION
for Coughs, Chest Colds, Bronchitis

Start the 30-day Camel Mildness test today

CAMELS ARE SO MILD that in a coast-to-coast test of hundreds of men and women who smoked Camels — and only Camels — for 30 days, noted throat specialists, making weekly examinations, reported

Not one single case of throat irritation due to smoking **CAMELS**

WOMEN'S HOUSE GOV. DANCE SLATED FOR FEBRUARY 25

Miss Freda Arnold, President of the Women's House Government Association, announced Friday that the Annual Dance sponsored by the Association will be held in the Breese Gymnasium from 8:30 to 12:00 o'clock midnight on Saturday, February 25, 1950. Carrol Henry's "Buccaneers" will provide the music. This will be a reappearance for this group of talented musicians. They were here for the Christmas Dance this year.

Miss Arnold said in interview today that the traditional Valentine theme will be abandoned this year in favor of what she called a "Blue Moon" theme. It has been very difficult to obtain a satisfactory date for this year's dance, Miss Arnold stated, and as a result the dance comes almost two weeks after Valentine Day. The Intramural Program, the regular basketball schedule and the Wrestling Team's home appearances have combined to keep the gym under constant contract.

Complimentary guest invitations can be secured in the usual manner this year, by contacting Miss Ann Albright, Dean of Women. If housing is desired for overnight guests, arrangements should be made as quickly as possible.

Miss Arnold has named the various committees in charge of the Dance and released the names of the Chairmen of these respective committees today. Miss Rose Cook is in charge of decorations, Miss Pat Edwards is Invitation Chairman and Miss Frances Finiger and Miss Opal Davis are serving as Co-chairmen of the popular refreshment committee.

Folder Published On Milk Sediment

Hints to dairymen on how to "Keep Sediment Out of Milk" are offered in a new folder by that title which was published this week by the State College Extension Service.

Issued as Extension Folder No. 78, the publication was prepared by John A. Arey, in charge of extension dairy work. It is illustrated with a number of photographs. Arey defines sediment as "any foreign matter which may be found in milk." Examples are dust from the air, insects and dirt, or hair from the cow's body. Some of it dissolves and cannot be removed even by the best type of filter strainer.

Although often invisible, sediment may lower the quality of milk to such an extent that it will be rejected by the milk plant, says Arey. He adds that the sale of milk containing sediment is forbidden by public health regulations.

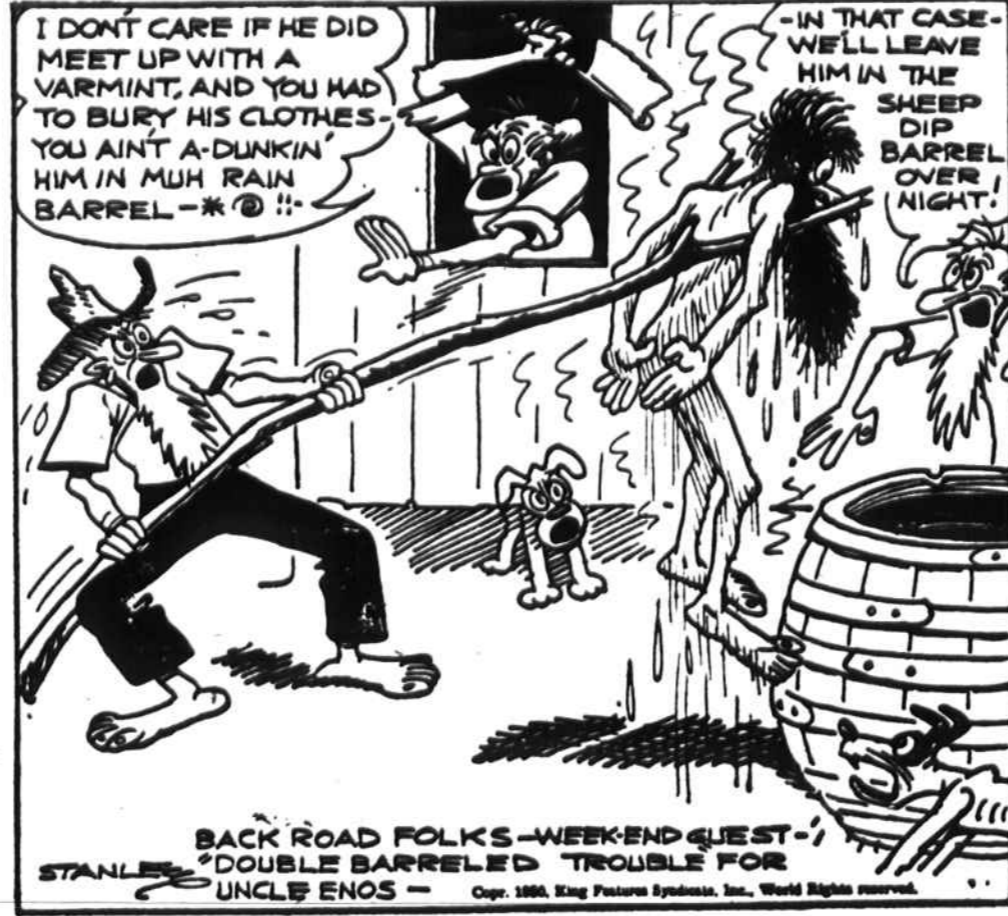
Asserting that "Clean milk can be secured by exercising reasonable care", Arey offers a number of suggestions which he believes will be helpful for dairymen. Among these are:

Keep stall or lounging place clean and well-bedded; keep hair on the cow's udder, flank, belly, hind legs, and tail closely clipped; brush animals each day, before milking, clean and massage udder and teats with a cloth taken from warm water containing a chemical sterilizer; keep milk utensils properly cleaned and stored in a place free from dust and flies.

Copies of the folder may be obtained free from the local county agent or by writing the Agricultural Editor, State College Station, Raleigh.

Most chemicals used as insecticides are poisonous to human beings and animals.

THE OLD HOME TOWN



Consumers Urged To Eat More Eggs

Miss Mary Johnston, Jackson County home demonstration agent for the State College Extension Service, this week urged housewives to take advantage of abundant egg supplies by using eggs not only for breakfast but in lunch and dinner menus as well.

Miss Johnston explained that egg production in December, according to the U. S. Bureau of Agricultural Economics, was 12 per cent above December of the previous year and 50 per cent above average production for the month for the past 10 years. Production has remained high in the past few weeks, she added, and generous supplies of eggs are in prospect through April.

Under the heavy output, egg prices had dropped sharply by mid-January, the home agent said, and both farm and retail prices were at the lowest levels since 1942.

Miss Johnston pointed out that the combination of more eggs at reasonable prices offers consumers a chance to help their food budgets by using eggs not only for breakfast but also in lunch and dinner menus.

Major reasons for the increased egg production, it was explained, are warm weather, which has increased the rate of production per hen; and larger laying flocks on farms. She said potential lay-

Ruff Takes Trip

Professor Glenn W. Ruff, of the College Music Department, recently made a trip to the central part of the State, visiting various high schools, making contact with the band instructors, and interviewing student band members regarding the possibility of their attending WCTC after their graduation from high school.

Mr. Ruff stated in interview that such contacts are necessary in building up the music program of any college, and that steps should be taken through the Public Relations Department of the college to make such contacts possible. Mr. Ruff further stated that the College Band and the College Chorus were full time jobs in themselves, and that he, with all this work coupled with an additional teaching load, is unable to find the time to make adequate contacts with high schools throughout this and neighboring states.

"The two top advertising media of any college," Ruff stated during interview, "are a good band and a good football team."

The number of work stock (animals three or more years old) on U. S. farms January 1, 1949, was only slightly more than one-third of the 1920 number.

ers on U. S. Farms on January 1 totaled 439,144,000, or 6 per cent more than in the previous year.

Singing Convention At Johns Creek 19th

It has been announced by convention officers that a singing convention will be held at John's Creek church at Cowarts on Sunday, February 19, beginning at 1:30 p.m.

All singers and quartets are invited to attend and take part in the program.

"Rice curls," a new snack food prepared from ground rice, have attractive commercial possibilities and offer a new outlet for the nation's rice crop, says the U. S. Department of Agriculture.

Baby Clinic To Be Held Weekly In Sylva

The District Health Department, Sylva, announces that beginning March 2 a Well Baby Clinic will be conducted once a month at the C. J. Harris Community Hospital by Dr. R. D. Daniels. Clinics will be held the first Thursday in each month, from 9:00 A.M. to 12:00 noon. This clinic is intended for routine check up on the health, care, and feeding of infants under the age of two years, who are apparently in good health.

Many Filipinos still suffer from undernourishment.

To Relieve Misery of

COLDS

take 666

LIQUID OR TABLETS - SAME FAST RELIEF

ALL KINDS OF KEYS MADE

Western Auto Associate Store

Thru February...
Treat The Family To Luscious

Cherry-Vanilla

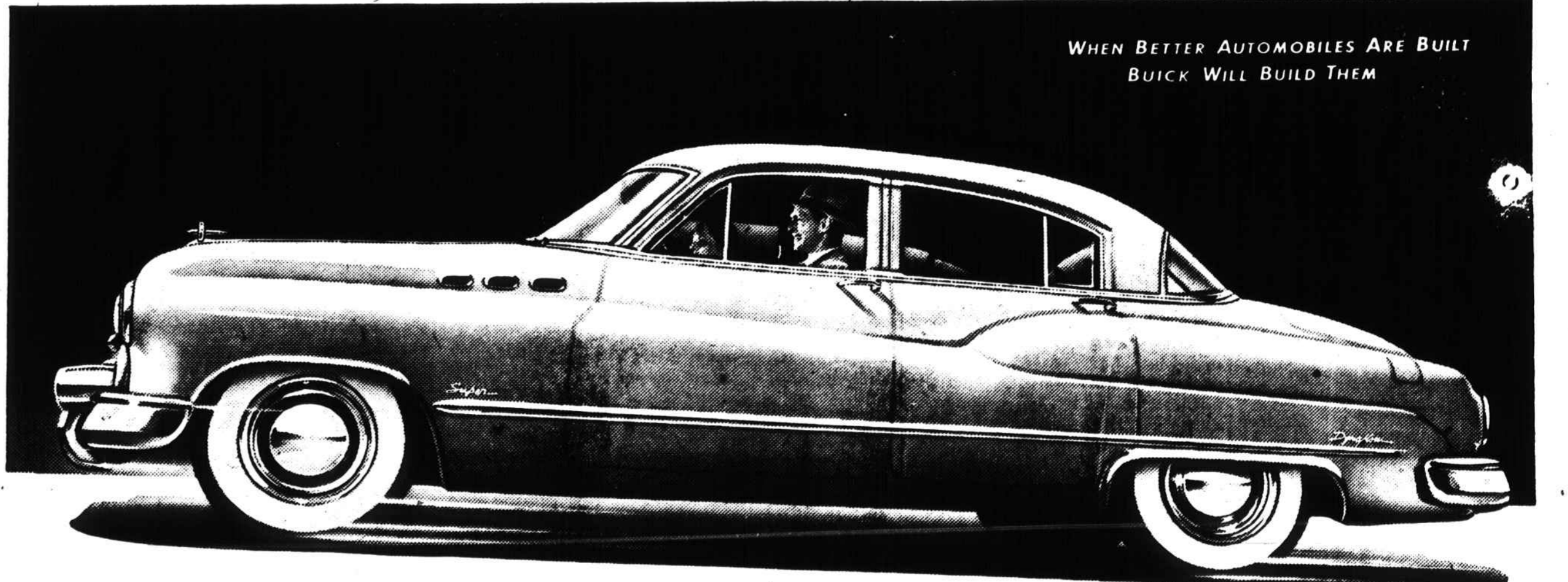
From the Land of the ICE CREAM Star!

They'll love its delicate, sweet cream flavor and the abundance of tender-sweet, tree ripened cherries in each rich, creamy spoonful of Pet Cherry-Vanilla Ice Cream!

It's delicious, refreshing - the perfect February dessert, for, like all Pet Ice Cream, Pet Cherry-Vanilla is made only of daily fresh whole milk and daily fresh sweet cream. Take home a pint or two, today!

COMPARE
The Quality, Texture and Flavor of Pet Ice Cream with any other! You, too, will agree, Pet Ice Cream tops them all!

Taste the Fresh Cream in Pet Ice Cream



BUICK STYLE IS HERE AGAIN!

NO question now as to who has the ball on automobile styling!

Take a look at almost any blockful of new cars — and you will see once more the sweep and dip of tapering fenders that Buick pioneered — and that the whole country went for with a joyous whoop and holler.

They're a little smoother now, of course, rounded a bit — and are molded right into the body. And they flow sweetly into rear-fender forms that look for all the world like a jet plane's power plant.

Then look how wonderfully they are topped off in the upperstructure — with wide, curving, one-piece windshields, and with smart, Buick-originated wrap-around back windows!

Yes, Buick style is here again. The sleek, swift-lined style that has put Buick right in the fashion forefront of postwar America.

And you can have it in a choice of many sleek and roomy models, ranging in

price from just above the lowest brackets to the fine-car field.

Come in to see your Buick dealer — and start traveling in the smartest styling of the times.

WHATEVER YOUR PRICE RANGE

"Better buy Buick"

Your Key to Greater Value

Phone your BUICK dealer for a demonstration — Right Now!

HOOPER MOTOR COMPANY

Main Street

Sylva, N. C.