

Winners of Recent Student Teacher Contest At WCTC



Miss Student Teacher Rogers and Mr. Student Teacher Nelson.



Runners-up Stott and Cotter.

STATE COLLEGE FARMER'S AID

QUESTION — How should plant beds for Turkish tobacco be prepared?

ANSWER — In the same manner as those for flue-cured tobacco, according to W. D. Lewis, Turkish tobacco specialist of the State College Extension Service. Since a large number of plants is required to set an area of aromatic tobacco where plants are set in 20-inch rows and five inches in the drill, the grower should seed 100 square yards of plant bed for each quarter-acre of tobacco. The bed should be located on a southern or southeastern slope where the soil is fertile and well-drained. The site should be free of shade. After the soil has been worked, says Lewis, 150 pounds of 4-9-3 fertilizer should be used for each 100 square yards of bed. After the seed have been sown, the bed should be covered with regular tobacco plant bed canvas. If the season is dry, the bed should be watered at seed germinating time.

QUESTION—Are pecan trees valuable as a sideline source of

THE OLD HOME TOWN



income?

ANSWER — The best way to answer this question is to cite the experience of a Columbus County farmer, W. J. Collier of Route 1, Whiteville. Collier has 20 pecan trees around his house and yard. They are useful for both shade and nuts. During the past season he gathered 1,496 pounds

of nuts and sold them for 22 to 25 cents a pound. His receipts were \$328.63, slightly more than twice the amount of his county taxes. However, pecan trees will not grow in all types of soil. Before a farmer begins this enterprise, he should consult his county agent for complete information.

QUESTION — Where can I get

March 2 Opening Date For Well Baby Clinic

A Well Baby Clinic conducted by Dr. R. D. Daniels will begin Thursday, March 2, at C. J. Harris hospital, and will be held the first Thursday in each month.

The clinic is for a routine check up on the health, care, and feeding of infants under the age of two years who are apparently in good health.

information about pasture for hogs?

ANSWER — Write to the Agricultural Editor, State College Station, Raleigh, and ask for a copy of Extension Folder No. 67, "Graze Hogs for 12 Months," which has recently been revised. This publication, prepared by Jack Kelley, animal husbandry extension specialist at State College, emphasizes the importance of thorough planning in order to have pasture every month in the year. Kelley says Ladino clover makes one of the best hog pastures for dry sows, boars, and hogs being fattened for market. This is a permanent pasture, he says, and should not be used more than one out of every three years for sows nursing pigs in order to control worms. Ladino clover should be seeded in August and September, so that there will

New Registration System

St. Louis, Mo.—(I. P.) — A streamlined registration system this year permitted most of the 5,500 day students at Washington University to register in approximately a half hour to forty-five minutes each. The change was brought about by separating the advisory functions from the sectioning process.

All class changes and problems were taken care of in Francis Gym while the actual signing and sectioning took place in the Field House, thus preventing the lengthy line-forming which previously occurred when one student at the head of the line had some difficulties to be solved.

Household Hint

A spot on furniture, such as a dresser, made by spilling cologne, may be removed by rubbing with oil and cigaret ashes if the finish isn't gone. Rub in a circular motion, then wipe off with clear oil and wax polish, as you like. Shelled woods are particularly susceptible to stains from cologne, as the alcohol dissolves the finish.

be plenty of grazing from early spring until late fall.

HAVE YOU RENEWED YOUR SUBSCRIPTION?

STATE COLLEGE HINTS TO FARM HOME-MAKERS

RUTH CURRENT
State Home Demonstration Agent
A tipsy pan on the range is both unsafe and inefficient, household equipment specialists remind homemakers. Before buying a saucepan or frying pan, make sure that it stands steady on a flat surface and that the handle is not so heavy as to throw the pan off balance. An unsteady pan can tip and spill hot food or water, does not cook food evenly and, especially on an electric range,

Use Herald want ads for results—



TAKE A SECOND LOOK AT YOUR OLD SHOES

Don't throw your old shoes away until you've brought them in to Blue Ribbon Shoe Clinic, where old shoes can be repaired to give you weeks of additional wear.

BLUE RIBBON SHOE SHOP

Phone 114 Sylva

wastes heat. Look for the pan that "hugs the stove," fits the burner or electric unit underneath, and has a close-fitting lid.

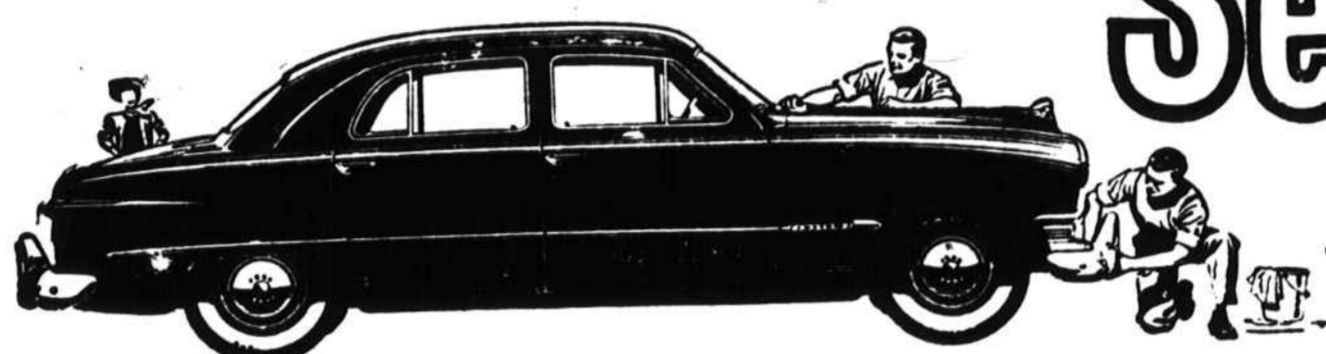
When white cotton or linen goods, such as sheets, curtains, or tablecloths, have stayed long in storage, sometimes the fabric isn't white as it once was. It has yellowed in spots or all over. A textile chemist says to try the simplest remedy first. Launder the yellowed article carefully and hang it in the sun to bleach as it dries. Or, dampen the discolored area and spread the article out in the sun.

If sun bleaching fails to work, a commercial packaged bleach may be used. Follow the directions on the package. If a bleach solution is made at home, one of the safest to apply is sodium perborate in a cup of water and soak the stained place for a minute or two. Rinse, and repeat if necessary. To treat a larger stain, prepare the solution in larger proportions. Whatever the kind of bleach, be sure to wash it out of the fabric at once, after treatment.

One cause of yellowing during long storage is a chemical change that comes with aging of the fiber. Heat of some storage places, such as attics, and also light may hasten this effect. Soap left in a fabric for a long time may cause yellow stain. So may tea and coffee, which often produce faint stains at first which darken with time. Iron rust is another yellow stain which can develop, due to some iron compound in blueing or wash water.

Storage trouble with such stains on white goods can be reduced by pre-storage care. Have articles thoroughly clean before storing, the textile chemist advises. Wash out any soap or bluing. If fabrics have been treated with chlorine bleaches in laundering, neutralize the chlorine with a little vinegar in the rinse water and thenrinse in clear water.

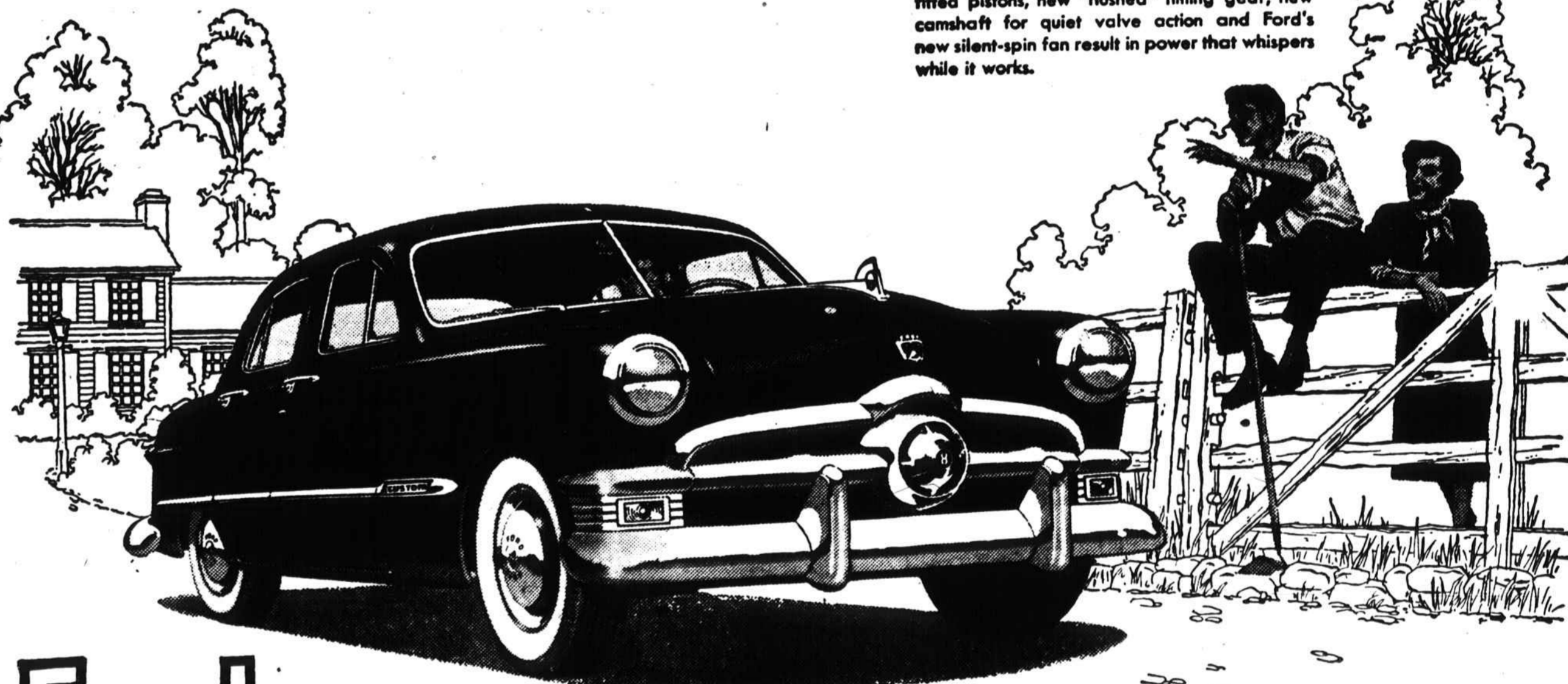
Then store the articles where they will get best possible protection from heat and from light.



See the quality

Hear the quality

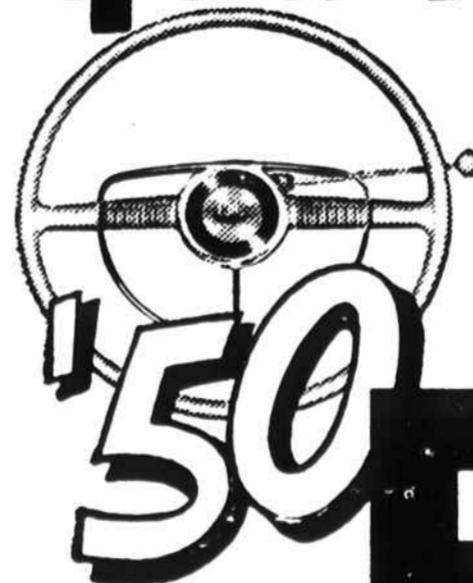
Before you look at that amazingly low price tag, look at Ford's "Fashion Car" styling. It's more beautiful than ever. Run your finger over the baked-on enamel. It's "built to live outdoors." Feel the long-lived upholstery. Look where you will—you'll see Ford's quality.



Ride herd on Ford's 100-horsepower V-8 engine. Sure, Ford's the liveliest power in its field, yet it never raises its voice. New super-fitted pistons, new "hushed" timing gear, new camshaft for quiet valve action and Ford's new silent-spin fan result in power that whispers while it works.

Feel the quality

Feel Ford's easy "Finger-Tip" Steering... feel the 35% easier action of King-Size Brakes... get the solid "feel" of Ford's 13-way stronger "Lifeguard" Body now "sound conditioned" for silence. Feature after feature will show you why Ford's the one fine car in the low-price field.



"TEST DRIVE"
THE '50 FORD AT YOUR FORD DEALER'S
It will open your eyes!

FORD

Reece-Hampton Motor Company, Inc.

Cullowhee Road

Sylva, N. C.

Famed Fashion Academy Selects Ford as "Fashion Car" Again This Year!

ATTENTION FARMERS!

AAA CERTIFICATE HONORED HERE
Top Grade Seeds and
International Fertilizers and Phosphate

FARMING AND GARDENING TOOLS

PLENTY OF GALV. ROOFING; 5-V-R COR.

NORGE ELECTRICAL APPLIANCES

We Deliver - - - - Plenty of Parking Space

SYLVA COAL & LUMBER CO.

"The Complete Hardware Store"

Phone 71

Sylva, N. C.