

HAVE YOU RENEWED YOUR SUBSCRIPTION?

DEEP WELL DRILLING

WITH MODERN EQUIPMENT

6 in. and 8 in. Wells

FOR PRICES CALL

E. L. ERWIN

Phone 218-J
SYLVA, N. C.

Also Plumbing and Heating

STATE COLLEGE HINTS TO FARM HOME-MAKERS

Do housecleaning the easy way. With the day's work in mind, plan the sequence of tasks. Have all equipment on hand before starting a task. Have the proper supplies and tools and know their correct usage. Before doing each specific job, analyze the sequence of procedure — whether to work from left to right or right to left, from top to bottom or bottom to top. See hints several weeks ago. Find the correct body position to do each job with the least amount

Wins Beauty Award



AFTER BEING CHOSEN "Miss Miami Beach of 1950," Betty Baucom, 19, holds the trophy that goes with the title. She will represent the city in the contest to select "Miss Florida." If she wins, she will compete in Atlantic City for the title of "Miss America." (International)

GRAZING CROPS HELP REDUCE FEED BILLS

Providing an ample supply of succulent green feed for poultry will not only reduce feed bills considerably but will also result in healthier flocks, three State College specialists declare in a revised bulletin published this week.

According to the specialists, young tender grass or green feed probably contains more protein, vitamins, and minerals than any other feed. When green feed is missing from the chickens' diet, it must be supplied in the form of feed supplements.

The six most widely used grazing crops for poultry, according to the bulletin, are Ladino clover, alfalfa, lespedeza, ryegrass, crimson clover, and soybeans. The cover of the publication arranges these crops for a year-round grazing schedule: ryegrass and crimson clover for winter; Ladino clover for early spring; alfalfa for late spring; soybeans for summer; lespedeza for autumn and other crops for late fall.

The bulletin was prepared by S. H. Dobson, extension agronomy specialist; C. F. Parrish, in charge, extension poultry work; and R. L. Lovvorn, formerly professor of agronomy for the Agricultural Experiment Station. Copies of the publication, entitled "Grazing Crops for Poultry" and issued as Extension Circular No. 239 (Revised), may be obtained from the local county agent or, by writing the Agricultural Editor, State College Station, Raleigh.

of strain and effort. Learn to make the left hand work as well as the right. Eliminate superfluous motions. Save steps. Bring in all supplies at once, carry out all trash in one large container. Watch for new products on the market that will help lighten tasks. Rest frequently. The same amount of work can be done in less time and done more uniformly if time for rest periods is allowed before becoming too tired. All members of the family should be given responsibilities in caring for the home. There should be a place for everything and all family members should be trained to return things to their proper places. Know how to care for the different surfaces and materials to be found in the home. Many books and pamphlets are available giving this type of information.

Make your own wall cleaner. A good many cleaning agents can be compounded at home as an aid to more efficient cleaning. The following recipes are taken from the circular, "Timesavers for Housecleaning Days," revised by a home management specialist. For badly soiled smooth-painted walls 1 cup sal soda, 1 cup household ammonia, 1 cup vinegar, and

4 quarts water. Add soda, ammonia, and vinegar to the water and mix thoroughly. Apply to the wall with sponge or cloth. Rinse well with clear water. Wipe dry. For polishing furniture: 1-2 pint raw linseed oil, 1-2 pint turpentine—mix and store in a covered can or jar. Label plainly. Shake well before using. Or the following mixture may be used: 1-2 pint boiled linseed oil, 1-2 pint turpentine, and 1-2 pint vinegar.

It's MISS AMERICA for beauty

Just one look will tell you why the '50 Ford is a style show all by itself... why it's the only car in automotive history to twice receive the Fashion Academy's Gold Medal Award as "Fashion Car of the Year" (and two years in a row, at that!)



It's MR. BIG for size

No other car in Ford's field offers so much hip and shoulder room. The '50 Ford is big and feels big. The minute you take this great car out on the road you'll feel its luxurious big car comfort, its effortless "Finger-Tip" steering and its solid roadability. A ten-minute "Test Drive" will convince you that the '50 Ford is truly Mr. Big for spaciousness, for comfort, for performance and for value.



And Champion of its Class for ECONOMY

'50 FORD

Here's real evidence of Ford's extraordinary gas economy. In the official AAA supervised Mobilgas Grand Canyon Economy Run, a '50 Ford Six equipped with Overdrive* won in its class—the three full-size cars in the low-price field. Low first cost, low operating cost and high resale value mark Ford—V-8 or "Six"—as the "Big Economy Package" in its field. "Test Drive" at your Ford Dealer's today. (*Available at extra cost.)

"TEST DRIVE" IT AT YOUR FORD DEALER'S

Reece-Hampton Motor Co., Inc.

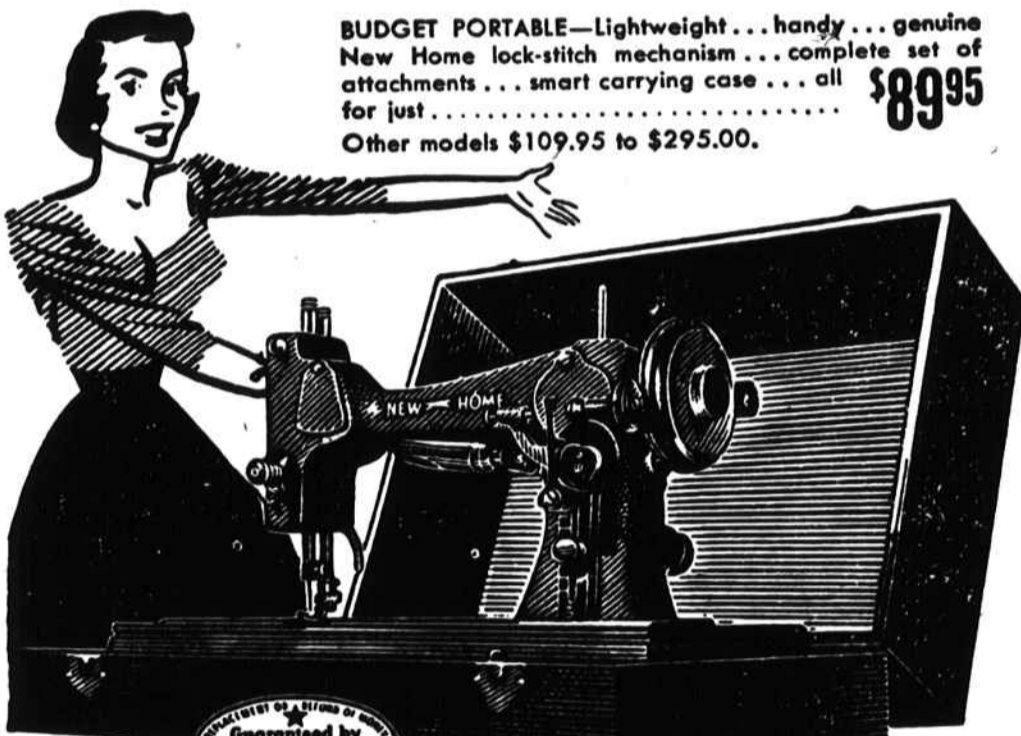
Cullowhee Road

Sylva, N. C.

Come in now! Money saving bargains! Free gifts!

90th ANNIVERSARY SALE!

FREE plastic thimbles, pins and tape measures! Exciting savings on attachments and accessories... the finest New Home sewing machines in 90 years. Come in today! Celebrate the 90th Anniversary of America's finest sewing machine, New Home.



BUDGET PORTABLE—Lightweight... handy... genuine New Home lock-stitch mechanism... complete set of attachments... smart carrying case... all for just \$89.95
Other models \$109.95 to \$295.00.



FREE HOME DEMONSTRATION
Absolutely no obligation. Call or come in now.

Jackson Furniture Co.

Main Street

Sylva, N. C.

ANNOUNCING

INSTALLATION OF NEW

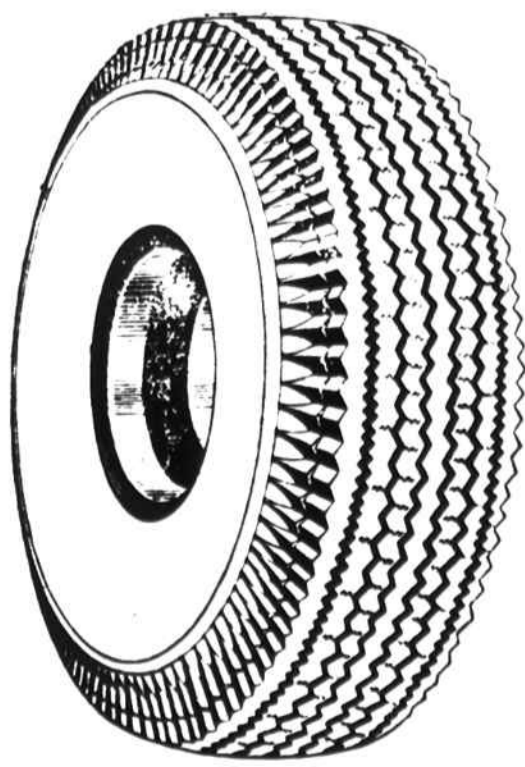
LODI PASSENGER MOLD

WITH NEW FULL CAP

TAKES STANDARD AND LOW PRESSURE

TIRES FROM ALL PASSENGER CARS

GUARANTEED LONG LIFE SERVICE



BUILT LIKE A NEW TIRE

SEE US FOR
YOUR NEXT RECAP JOB

Sylva Tire Company

Phone 58

Sylva



No chip on our shoulder!

Despite our occasional "voice of protest" against certain practices in the inter-city commercial transportation field today, the Southern Railway isn't "mad" at anyone.

But we do feel that we have an obligation to you... and to ourselves... to speak out strongly against a situation which is not only strangling America's railroads... but threatening this country's basic, free-enterprise system of which the railroad industry is the keystone.

The self-supporting, tax-paying railroads welcome fair and honest competition. But is it fair to require them to compete for business with air, water and highway carriers who offer their services at less than cost... because your tax dollars... and ours... "make up the difference"? Is it good for America?

We don't think so. America's strength was built... not on tax-dollar handouts... but on fair play and self-reliance. Let's build a strong transportation system... in all its forms... the same way. The American way! The railroad way!

Ernest E. Rorand
President

SOUTHERN RAILWAY SYSTEM

