

# ARE YOU READY???

COOL NIGHTS AND MORNINGS ARE HERE  
You Will Want Your  
Sweaters - Skirts - Jackets, Etc.  
Ready For School Wear

If you haven't already had your heavier clothing cleaned, bring them in Now, or FOR PICK-UP AND DELIVERY — DIAL 2461

## Edwards Cleaners

MARSHALL, N. C.

### November 1-20 Designated For Christmas Overseas Mail

The period November 1 to November 20 has been designated for the mailing of Christmas parcels to members of our Armed Forces overseas. The term "Armed Forces overseas" includes personnel of our Armed Forces, members of their families, and authorized United States civilians employed overseas who receive their mail through an APO, New York, N. Y.; San Francisco, Calif.; New Orleans, La.; or Seattle, Wash.; or Fleet Post Office, New York, N. Y.; or San Francisco, Calif.; or Navy Post Office c/o Postmaster, Seattle, Wash.

Time of Mailing — Parcels:  
By surface mails—November 1 to November 20.  
By airmail—December 1 to December 10.

Size and Weight Limitations:  
By surface mails — 70 pounds is the maximum weight except that a limit not to exceed 50 pounds applies to certain overseas

destinations addressed through New York, N. Y. 100 inches in length and girth combined is the maximum size except that smaller limitations apply to certain overseas destinations addressed through New York, N. Y.

By airmail:  
2 pounds is the maximum weight and 30 inches the maximum length and girth combined.

Preparation:  
Boxes for overseas transmission must necessarily be of strong construction on account of the great distance these parcels must be transported and the handling and storage they must undergo. It is necessary that all articles for overseas delivery be packed in boxes of wood, metal, solid fiberboard, or strong double-faced corrugated fiberboard.

It is also desirable that all fiberboard boxes be securely wrapped in heavy paper, which materially strengthens the package.



Pictured above are members of the Post Office Dedication Sponsors' Committee; left to right: James I. Story, chairman; Vernon C. McCarthy, W. F. Holland, Clyde M. Roberts, W. B. Zink, Mrs. S. C. Rudisill, J. J. Ramsey, Delmer Payne, Robel Bedmon, and the Rev. L. Richard Mellin. Absent when picture was made were Mrs. Fred O. Tilson, J. H. Sprinkle, John Lackey, Mrs. C. D. Bowman, P. R. Elam, Mrs. H. B. Ditmore, the Rev. D. D. Gross and Mrs. Janie Ramsey.

Each box should be well tied with strong cord. Boxes should contain sufficient cushioning material so the contents will be tightly packed to prevent any rattling or loosening of articles within the package. Unless completely pack-

ed and tightly filled, boxes are likely to be crushed.

Customs preparation:

Customs declarations on Form 2966 or 2976A completed by the senders are required on parcels addressed through certain APO's

and NPO's.

Prohibited articles:

In addition to the usual articles normally prohibited in the mails, matches of all kinds and lighter fluid may not be mailed to overseas military addresses. Cigar-

ettes, other tobacco products, and coffee are prohibited in parcels addressed to the military post offices which are listed and can be determined by inquiry to your local post office.

Postage:

The domestic rates of postage are applicable, and postage must be fully prepaid. When fourth-class parcel-post rates are applicable, the zone rate from the post office where mailed to the post office through which the parcel is addressed will be charged. Air-

mail weighing not to exceed 8 ounces is chargeable at the rate of 6 cents per ounce, and these articles weighing over 8 ounces are chargeable at the rate of 80 cents a pound.

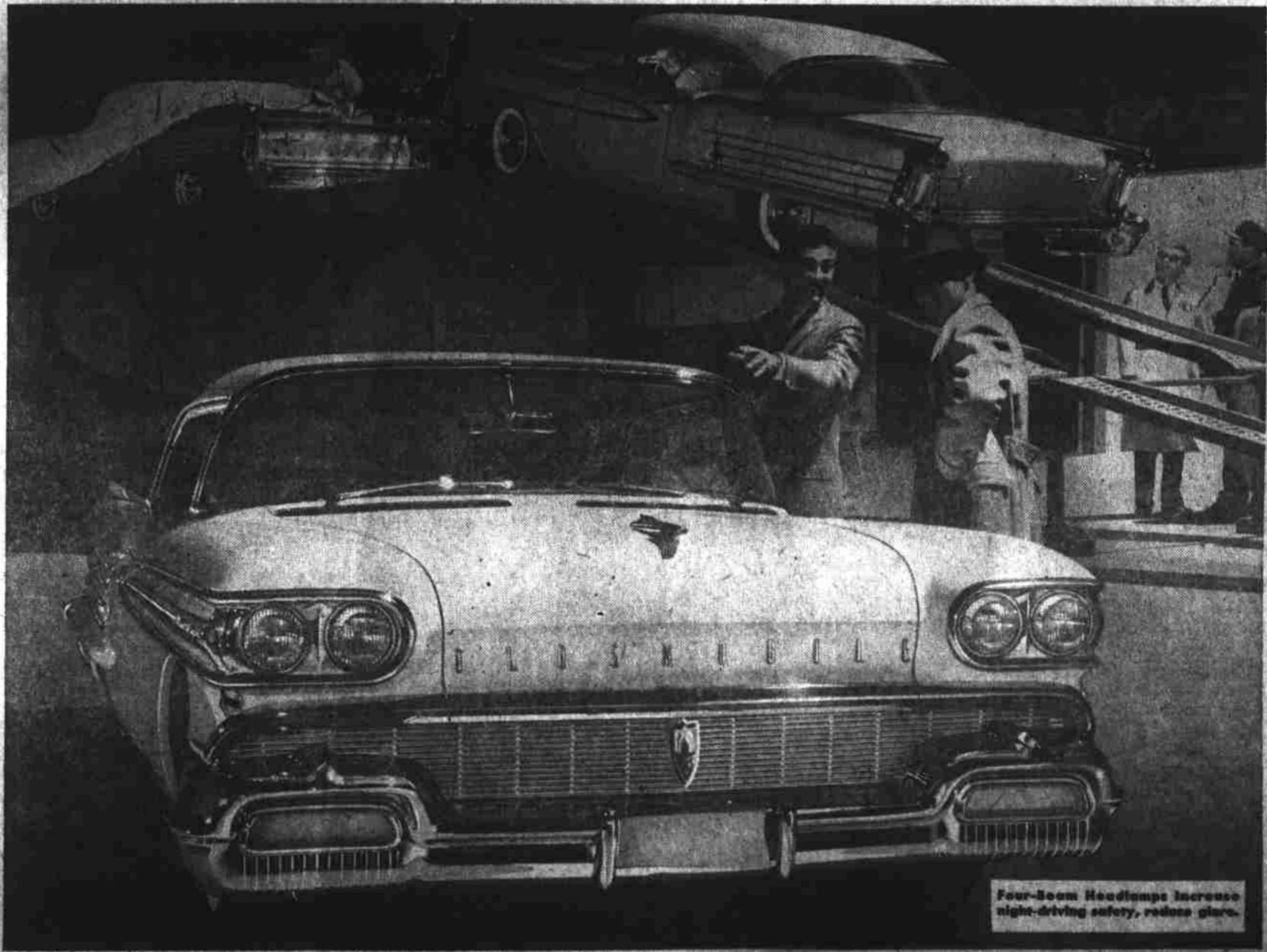
Addressing:

Addresses must be legible and complete and should be prepared in typewriting or ink. The correct forms of address for overseas military personnel are illustrated in displays at the local post office.

THE NEW ROCKETS ARE HERE...BRINGING YOU

# OLDSmobility

...THE NEW WAY OF GOING PLACES IN THE ROCKET AGE!



Four-Beam Headlamps increase night-driving safety, reduce glare.

## FOR 1958... OLDSMOBILE CREATES A NEW CLASS OF CARS!



New, more efficient Turbo-Diesel engine gives you outstanding performance. Removable top provides an open-air atmosphere for you and your family. Turbo-Diesel engine gives you up to 25% greater fuel economy.

In the 1958 Oldsmobile you'll find most everything you've ever wanted in a motorcar—outstanding styling, smart, tasteful design, delightful new features, short new Buick Engine performance, superior comfort, latest new colors and fabrics. And most important of all, you'll find real economy—worth spending money! As never before, Oldsmobile for '58 gives you the big-car size, big-car comfort and handling, big-car performance, and big-car value. Own your Oldsmobile for '58. You'll know the difference that comes from the new Turbo-Diesel Headlamps on the sparkling Turbo-Diesel. It's the biggest value in Oldsmobile's 50-year history!

NOW ON DISPLAY... AT YOUR AUTHORIZED OLDSMOBILE QUALITY DEALER

We Are Proud . . . . . of the fine new addition to our community and we join with the rest of Madison County in extending our heartiest  
**Congratulations**  
TO THE NEW  
**Post Office**  
**J. H. Eads**  
MARSHALL, N. C.

**Congratulations**  
TO  
THE  
NEW  
**Post Office**  
**Sprinkle-Shelton**  
**Wholesale Co.**  
MARSHALL, N. C.