

THE NEWS - RECORD

Volume 73, Number 52,

Marshall, N. C.

15 CENTS PER COPY

January 23, 1975

New Fire Alarm Reporting System Is Installed Here

Friday, Jan. 17, the Marshall Volunteer Fire Department acquired a new fire alarm reporting system which will increase efficiency, indicate immediately what manpower is needed, and dispatch men to needed areas. Called the Kellogg Fire Alarm Reporting System, the Marshall Department is the second in the county to have the system installed, Mars Hill being the first. It operates on the same telephone number, 649-3333, as before. When 649-3333 is dialed, the caller is placed in immediate contact with 12 firemen's homes. The call is carried on the fireman's own personal telephone without the need for an additional phone. A fire call can be distinguished from a regular, personal call by the continuous ring of the phone's bell rather than the usual intermittent ring. Should a fireman not be at home when a fire call is received, his phone

will ring until the last person on this circuit hangs up. Should an alarm be called while the fireman's phone is in use, a tone will be heard by the person using the phone indicating he should hang up. His phone can then receive the fire call. This does not delay the call to other firemen. Members of the fire department ask that the

public dial 649-3333 ONLY TO REPORT A FIRE! If there is need to talk to someone at the fire department on a non-emergency basis, 649-2660 will connect the caller to the non-emergency phone at the fire department. Personal call, etc., made to 649-3333 will disturb up to 12 families and may cause needless hardship.

Jurors Drawn For Special Term

A list of jurors has been drawn for the Special February 3 term of superior court for the trial of civil cases. The Hon. Robert W. Kirby will be the presiding judge.

The list of jurors follows: Roy Shadley, J. J. Jones, Abner Wilde, Faye Revis Norton, Lou Reese, William Phillips, Sonny Franklin, Frank Peterson, Lillian Mae Beck, Betty Jean Broughton, Gordon Allen Ball, Pearl Gosnell, Cleo English, Alice Reece, Tommy Rathbone, Cleland Snyder, Van Jamerson, Carl Everett Laws, Wayne Willis, James Wade Thomas, Joseph P. Garrison, Muncie Cantrell Wallin, Lida E. Ball, Bruce Bradley, Buddy Blackwell, Elzie Scoggins, Mrs. M. A. Revis, Mrs. Mallie Clark, Roger Murray, Melva A. Sexton, Mack Norton, Jean Roberts Allison, Troy R. Collins, Nova Shook, Tarshel John Peek, Larry Peek, David Marlor, Porter Graham, David Jack Honeycutt, Grace P. Goforth, Charlie Gowan, Arnold Brown, Carl Norton, Maggie Jane Massey, Nancy A. Clark, Clarence Henderson, Mrs. Roten Ebbs, James Edmonds, Jr., Zella Ballard, Blake Ray, Jr., Patterson Wilds, Howard Allen Teague, Wanda Shepherd, Myrtle A. Rice, Brant Johnson, Bernice L. Wright, Leo Caney Willett, Patricia Ann Norton, Sadie Christie, Louise Smith, Gordon Moore, Claude Dale Keener, Daniel K. Sobush, Tom Caldwell, Gayle Isensee.



REMEMBER WHEN? The above picture(s) were taken March 19, 1936 showing Marshall's Main Street with snow banked on both sides. This was one of the deepest snows ever recorded in the county.

French Broad Co-Op To Hike Power Rates

French Broad Electric Membership Corp. will increase rates for electricity, effective on bills of Feb. 1. The power cooperative receives wholesale power from Carolina Power and Light Co. at substantially higher rates under a contract which took effect at the beginning of the year.

As was announced last July, CP&L initiated a 64 per cent rate hike for its electric cooperative customers, to be placed into effect with the Jan. 1 expiration of the contract. Due to the tremendous impact of this wholesale rate increase, French Broad Electric Membership Corp. is forced to raise its rates approximately 39 per cent with the cooperative absorbing a considerable portion of this increase so as to relieve financial hardship upon its consumers as much as possible, according to a company spokesman.

Under the new contract, CP&L will also place into effect a fuel adjustment clause on purchased power. This has been sanctioned by the Federal Power Commission as a flow through charge for the increase in cost of fuels used in the production of electricity. The fuel adjustment is based upon a calculation of what amount of electricity can be generated from an amount of coal or diesel fuel. Because these two commodities have risen tremendously in cost and the price has not stabilized, this factor will vary from

month to month, the spokesman said. This charge being passed on to French Broad Electric Membership Corp. as a flow through adjustment leaves the cooperative with no other choice but to pass the fuel clause adjustment in addition to the rate adjustment to its consumers. This hike is the first major rate adjustment to be placed upon the consumers of French Broad Electric Membership Corp. since 1966.

Madison County Is A First

The Madison County Bicentennial Committee is pleased to announce that Madison County is the first western North Carolina county to be recognized as a Bicentennial Community. In honor of this accomplishment, a recognition program will be presented at the Madison High School at 1:30 p.m. on Tuesday, Jan. 28. The Rev. Spencer LeGrand, pastor of the Marshall Baptist Church, will give the invocation. Bob Edwards, superintendent of public schools, will introduce the speaker, Tom Mallonee. Dr.

Wheeler, a representative of the North Carolina Bicentennial Committee, will present the Bicentennial Flag. Music will be presented by James Thomas, a member of the music faculty of Mars Hill College. The public is cordially invited to attend.

Opposition Aired To Phone Rate Hike

Customers from several areas voiced opposition to Western Carolina Telephone Company's proposed rate hikes in a State Utilities Commission hearing held Thursday in Buncombe County Courthouse. Dr. Joseph Godwin of Mars Hill asked that approval of the hike be withheld until a petition asking that his town

be tied into the Asheville exchange. He called present service "substandard." He voiced further opposition to long distance rates for calls outside "an immediate environment." A resolution passed by the McDowell County Board of Commissioners opposing the rate hike was presented by its clerk, Mrs. Judy Wright.

Western Carolina and a sister firm, Westco, hiked rates about 20 percent in December under a state law regulating temporary rate increases under bond. Should the commission reject the telephone companies' rate increases, increases collected since December will be returned to the customer with interest.

Edmisten Vows Action On Crime Rate

North Carolina Attorney General Rufus Edmisten promised action on consumer protection and rising utility and crime rates in the state in Asheville last Thursday in a round of activities. Among his activities, the youthful Attorney General was the featured speaker at the annual membership luncheon meeting of the Better Business Bureau of Asheville and Western North Carolina held at the Holiday Inn West.



Edmisten vowed to back up the BBB in its consumer protection endeavors with "the full force of the attorney general's office." And Edmisten told a press conference prior to the BBB meeting that he felt speedy trials and stern punishment were the best deterrents to a spiraling crime rate. "I'm not so sure these interim (utility) rate increases are legal," the attorney general said, adding that he has said as much in court suits recently filed. He said he has also questioned whether the State Utilities Commission actually had the authority under the law to grant the interim rate increases. "I think the power companies must realize that they must tighten their belts just

like anyone else," Edmisten said. Edmisten praised the fine efforts of the BBB for its accomplishments during the past year and especially praised Dan Packard, president of the BBB, for leading the active work of the

Bureau. "In my opinion, the Asheville and WNC BBB is the best in the state and perhaps the best in the nation," Edmisten said. At the directors' meeting following the luncheon, 10 new directors were elected and various officials and workers in the BBB were recognized and honored. Jim Story, a member of the board of directors representing Madison County, and Dean Shields, of WMMH, attended the meeting.

Unused 1973 Burley Quotas To Be Lost

Several questions have been asked recently about the farmers who will lose pounds in 1975 because of undermarkings. It seems that Madison County has only 56 farms who will lose pounds. The majority of these farms are involved in an estate where several heirs, some out of state, would be required to sign the lease or farms that have out of state operators or owners. The ASCS office has notified each of these farm operators about the number of pounds their farm will lose in 1975 unless a lease and transfer agreement is properly signed by February 15. The reason these farms are losing quota is because there were pounds carried forward

from the 1973 crop year and not grown in 1974. These 1973 pounds can not be carried on to 1975 therefore will be lost unless leased by February 15. The Agricultural Stabilization and Conservation Service is very interested in helping these farmers not lose these pounds. The approximately 28,000 pounds involved on these 56 farms could mean income to the farm operators as well as to the farms who lease these pounds. If anyone is interested in contacting these persons to execute a lease, please contact the ASCS Office and review our list. REMEMBER, February 15, is the deadline for leasing these 1973 pounds.

Flu Epidemic Reported In Many States

The southeastern United States is experiencing an influenza epidemic, with deaths exceeding the epidemic threshold for the first time this winter, the National Center for Disease Control reported Friday. Outbreaks of the Type A Port Chalmers influenza strain are now spreading to the Midwest and New England states, the CDC's Morbidity

and Mortality Weekly Report showed. Dr. Lawrence Corey, head of the center's influenza surveillance section, said the current influenza vaccine is effective against the Type A Port Chalmers flu, which is the predominant strain now occurring in the nation. The CDC keeps no national totals on the number of persons who die from pneumonia

and influenza, but it bases its reports on a "statistical sampling on a regional level." Deaths are reported weekly to the CDC from the vital statistics offices of 121 U. S. cities which contain approximately 70 million persons grouped in various regional areas. The CDC estimated that 530 persons would die throughout the nation from pneumonia and influenza during the second week in January of this year.

"When at least 50 or more deaths than normally expected are reported this indicates a substantial increase which we define as the 'epidemic threshold,'" Corey said. The center determines the areas where an epidemic is under way by using mathematical formulas it has developed to assess conditions in various regions. The CDC's report said the flu epidemic is occurring in Georgia, Florida, North Carolina, South Carolina, Kentucky, Tennessee, Alabama and Mississippi. The report also includes West Virginia, Virginia, Delaware and the District of Columbia in the geographical area reporting epidemics, but Corey said conditions in those states constitute only flu outbreaks, not epidemics.

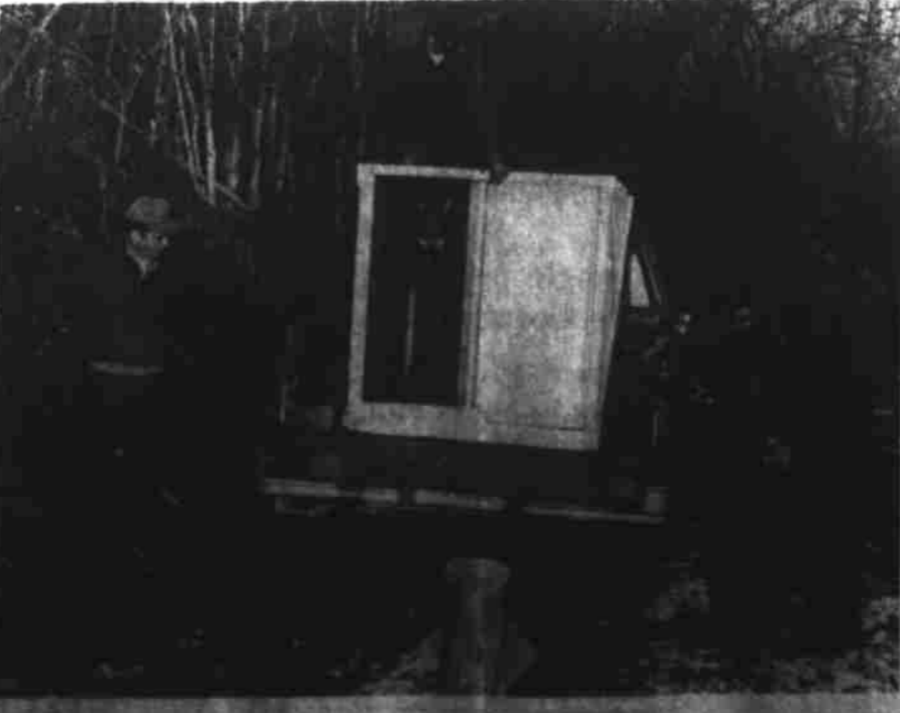
Stocking Of Deer On Bluff Mountain

North Carolina's new deer restoration program got underway Friday, Jan. 17 with the first release of deer on

Bluff Mountain in Madison County. This is the first deer release in western North Carolina since 1967 when 29

wild trapped deer were placed on the Totaway Area. This first delivery of deer to Bluff Mountain was made by Game

Management Technicians from Burnsville, Crossnore and Marion. These technicians had trapped the deer from game lands in Avery, Burke, Caldwell, McDowell, Madison, Mitchell and Yancey counties.

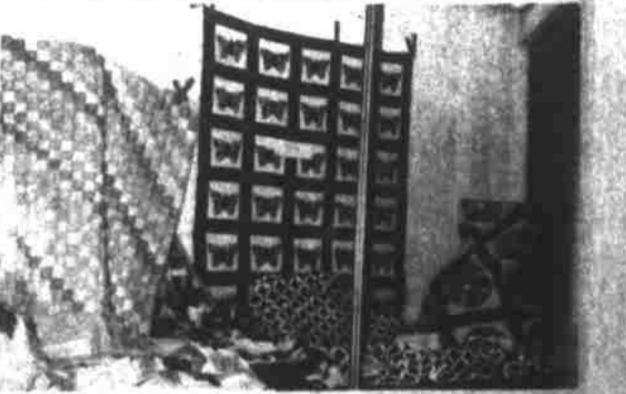


PICTURED ARE (left to right) L. D. Harrow, Don Wilson, John Conners and Joe McFee. These men are Game Management Technicians making the first deer release on Bluff Mountain Deer Restoration Area.

Ski Day At Wolf Laurel A Success

By BILL ALVERSON Sunday past, Jan. 19, proved to be both exciting and fun-filled for approximately 200 Madison County residents who made their way to Big Bald Mtn. to take part in "Madison County Day at Wolf Laurel." Some came to ski and some just came to watch, but all in all everyone had a good time. The weather was a pleasant 41 degrees and only a couple of times did the skiers get sprinkled by rain. No accidents were reported, but

from talking to some of the participants, sore muscles were expected. Many thanks are in order to the staff at Wolf Laurel, the News - Record, Marshall Radio WMMH, and the Student Council of Madison County High School for their efforts in helping promote a successful "Madison County Day at Wolf Laurel." Because of the interest and enthusiasm displayed in this program, another such ski day will be planned for late March.



LIBRARY WINDOWS this month are displaying new and old quilts. In the window next to the Post Office are the new quilts: a Dresden Plate, Butterfly and Pansy quilts done by Mrs. Ada B. Payne. The Cathedral Window was done by Mrs. Orin Ponder, the Variety quilt was made by Mrs. Davis Boone and a Puff quilt by Mrs. Minerva Metcalf. In the other window are two old quilts made in the Crazy quilt pattern of silk about 50 years ago by Mrs. Van Davis. Two Flower Garden patterns, a Dutch Rose, a Star and a Crazy quilt are displayed which were made by Mrs. Lillie Martin after she was 70 years old.

Land Utilization Survey Now Underway

All landowners of ten or more acres are urged to cooperate with their county officials by accurately reporting their 1974 crops and livestock in the 1975 Land Utilization Survey to be conducted in January. Landowners will make their reports directly to the township listers, or in counties where the survey is done by mail they will complete and return the questionnaire to the person responsible for collecting the data. The information reported by the landowner is confidential and is available to the landowner only. The law prohibits the use of such information for tax

purposes. "It is impossible to overemphasize the importance of accuracy in the individual reports. The information is a yearly history of the activities, crops, livestock, etc. of the individual tracts. This information is invaluable in many ways to the individual landowner as in the instance of establishing future crop allotments, the possible allocation of fertilizer, gas, fuel oil and farm machinery and marketing quotas," advised Ed Weller of the Crop Reporting Service, N. C. Department of Agriculture.