

THE MADISON HIGH BETA CLUB elected its members last week for the current school year, including: Sheila Ammons, Dwayne Buckner, Debra Bullman, Alice Caldwell, Alred Docleery, Ken Edwards, Steve Fish, Elaine Fore, Lynn Gibson, Michael Griffin, Holley Hough, Kevin Johnson, Darlene Justice,

Brenda Keller, Greg Lisenbee, Stan Mace, Steve Mace, Sherry Maynard, Vera Melvin, Kathy Pack, Danny Plant, Foster Sawyer, Sheila Shelton, Sherry Shelton, Brenda Stephens, Robbie Waites, Debbie Wood, Gina Worley, Delores Wyatt, and Diane Young.

Madison Manpower Graduates

(Continued from Page 1)
for students who never have held full-time jobs.

Graduates from the Walnut center are: Vivian Bechtol, Jimmy Boyd, Judy Buckner, Carl Chandler, Danny

Chandler, Jimmy Chandler, Patty Chandler, Gary Frady, Karen Frisby, Wanda Gosnell, Kay Hamilton, Cherie Henderson, Don Lunsford, Doug Lunsford, Neal Lunsford, Oliver Norton, Stella Norton, Kathy Reed, Pam Reed, Wilma Reed, Rebecca Roberts, Carrie Shade, Otis Shade, Anita Shelton, Mary Ethel Shelton, Roger Swann, Mark Stubbs, Reba Tipton, David Treadway, Kanda Tweed, Ricky Tweed and Diana Wheeler. Class speaker was Roger Swann, and instructors were Ralph Hamlett and Ann Van Brock.

Graduates from the Hot Springs center are: Greg Lamb, David Lisenbee, Billie June MacCarter, Billy Moore,

Chester Pettit, Randy Rice, Larry Rice, Joy Roberts, Tina Shelton and Phillip Stamey. The class speaker was Joy Roberts. Instructors were Linda Biggers and Mildred Shelton, aided by Locella Lewis.

Graduates from Greater Ivy are: Kathy Bailey, Sandra Blankenship, Mildred Buckner, Carl Chambers, Eveline Gosnell, Nola Harwood, Edmond Metcalf, Sheila Metcalf, Linda Myrick, Donna Poor, Larry Shepard and Barbara Wheeler. Class speaker was Kathy Bailey, and instructors were Fran Hensley and Butch Phillips.

Overseeing the program from A-B Tech have been Bill Shetley and Kay Roupe.

Wallin And Ramsey Will Perform At WCU

Cas Wallin and Evelyn Ramsey of Marshall will join many of the best mountain musicians for miles around to perform in Cullowhee Sept. 29 as Western Carolina University celebrates its 90th anniversary and the fifth annual observance of Mountain Heritage Day.

Wallin and Ramsey are scheduled to perform in the auditorium at 3:45 p.m. Also, Byard Ray of Asheville will perform in the same place at 1:55 p.m.

Masters of ceremonies for the musical portion of the day's events will be Glenn Bannerman, who is well known to area audiences for his long association with the Mountain Dance and Folk Festival held each summer in Asheville.

In Service

Marine Pfc. Ricky W. Brown, son of Roy and Corena Brown of Route 1, Hot Springs, has reported for duty with 2d Marine Division, Marine Corps Base, Camp Lejeune.

A 1977 graduate of Madison High School, Marshall, he joined the Marine Corps in February 1978.

DOCUMENT DELUGE

LOS ANGELES (AP) — U.S. industry today has an estimated 265 billion documents in storage and is creating new documents at a rate of 30 billion each year, according to AM International, a business-machine manufacturer.

Bannerman, professor of recreation and outdoor education for the Presbyterian School of Christian Education in Richmond, Va., will preside over the activities of a host of singers, instrumentalists and dancers.

Among the groups scheduled to perform are the Harry Cagle Country Cousins of Sylva, the Dutch Cove String Band of Canton, the Gott Family Band of Marshall, the

Hornby Valley String Band, the Machen Spirituals of Elizabethton, Tenn., the Luke Smathers String Band of Can-

ton, the Stoney Creek Boys of Asheville and the Mountain Women's Cooperative Band from Swannanoa.

Bids To Be Taken For Firewood Sales

Joe Wallace, district ranger of the French Broad Ranger District in Hot Springs an-

nounced today that Firewood Sale Bid Sheets are available for the next week for 27 small firewood areas. These sales are on a closed bid basis. Ranger Wallace stated these sales are being made available to help meet the demand for firewood which cannot be met through the Free-use Firewood Program.

Sales will be made to the highest bidder. Bids must be received by 10 a.m. Sept. 28.

For information contact the U.S. Forest Service in Hot Springs.

J.C. Snead, a PGA star, played baseball in his younger days in the farm system of the Washington Senators.

Citizens Urged To Register For Voting

Madison County voters who would like to vote in the upcoming general election Nov. 6 should be sure they are properly registered. Marshall, Mars Hill, and Hot Springs will all be electing a mayor and three aldermen to direct their town governments, and those who wish to participate in the election by casting ballots should register at the city hall of their town by Oct. 8. If you have any questions about your voting status or the procedures involved, contact your own city hall.

The filing period for candidates for election has begun, and will end at 12 noon on Oct. 5, 1979.

Francisco Vasquez de Coronado crossed the Arkansas River in 1541. Coronado explored the Zuni and Hopi territories, discovered the Grand Canyon and Rio Grande and opened the American southwest to further exploration.

ROBERT GREASON CUSTOM CONSTRUCTION

EXPERIENCED IN ALL PHASES OF BUILDING CONSTRUCTION, ADDITIONS, REMODELING, AND RENOVATION

CALL 649-2417

Marshall

(Continued from Page 1)

slide show, and so on. We'll try to have it on a Sunday afternoon, and I think Richard Kingston is going to give a short harpsichord concert for us."

The meeting ended on a rousing note, as several team members pointed out that whether the town wins the award or not, it will have learned and gained a great deal from preparing for this judging. Several others commented that Marshall should not solicit any kinds of industry that would upset or damage the pleasant environment and lifestyle its residents have grown to love.

"When that TV commentator from Asheville took a picture of the chicken walking across Main Street," said Bill Stump of Arbee Manufacturing Co., "at first I was irritated at his poking fun at us. Then I came to my senses and realized that we're 100 miles ahead of him. If a chicken can get across our street without having to worry, then a child can get across safely. And that's something to think about."

Ramsey

(Continued from Page 1)

sure made it turn that fellow loose."

We got back down to the house and Obay asked if I'd like to go with him to feed his fish. He has two large ponds and a small one, all watered by springs from the mountain. He raises brim and smallmouth bass and takes great pleasure in feeding them with bread crumbs every day. He told me to move along the bank a few feet; I did. Then he moved along after me and pointed out that a cloud of brim were watching him and following him. They paid no attention to what I did; I had no bread crumbs, and they knew it.

I pretty well knew that he wouldn't be eating or selling these pet fish, but I asked the question anyway: "What do you do with the fish?" I asked. "I talk to 'em," he grinned.

IRS Office

The Asheville office of the Internal Revenue Service is moving from South French Broad Avenue to Suite 400 in the Northwestern Bank Building, 1 West Pack Square in downtown Asheville.

The IRS said that the new office opened for business Sept. 17. Office hours are from 8 a.m. to 4:30 p.m.

Taxpayers needing assistance with federal tax returns are encouraged to call the toll-free line, 1-800-829-8888. (Occasionally, this line is monitored to ensure accurate and courteous responses. No record is made of the caller's identification).



VENTRILOQUIST CAROL DAVIS will be performing Sept. 17-23 at the annual Festival in the Park at Freedom Park in Charlotte. Performing artists and craftspersons from all over the state are invited to this annual event to demonstrate their talents and to make North Carolinians more aware of the arts. Mrs. Davis is the former Miss Carol Shelton, daughter of Mr. and Mrs. Vader Shelton of Marshall.

DURING SEPTEMBER
10% OFF ON THE LOG HOME
OF THE MONTH

THE MADISON
(3 B.R.)



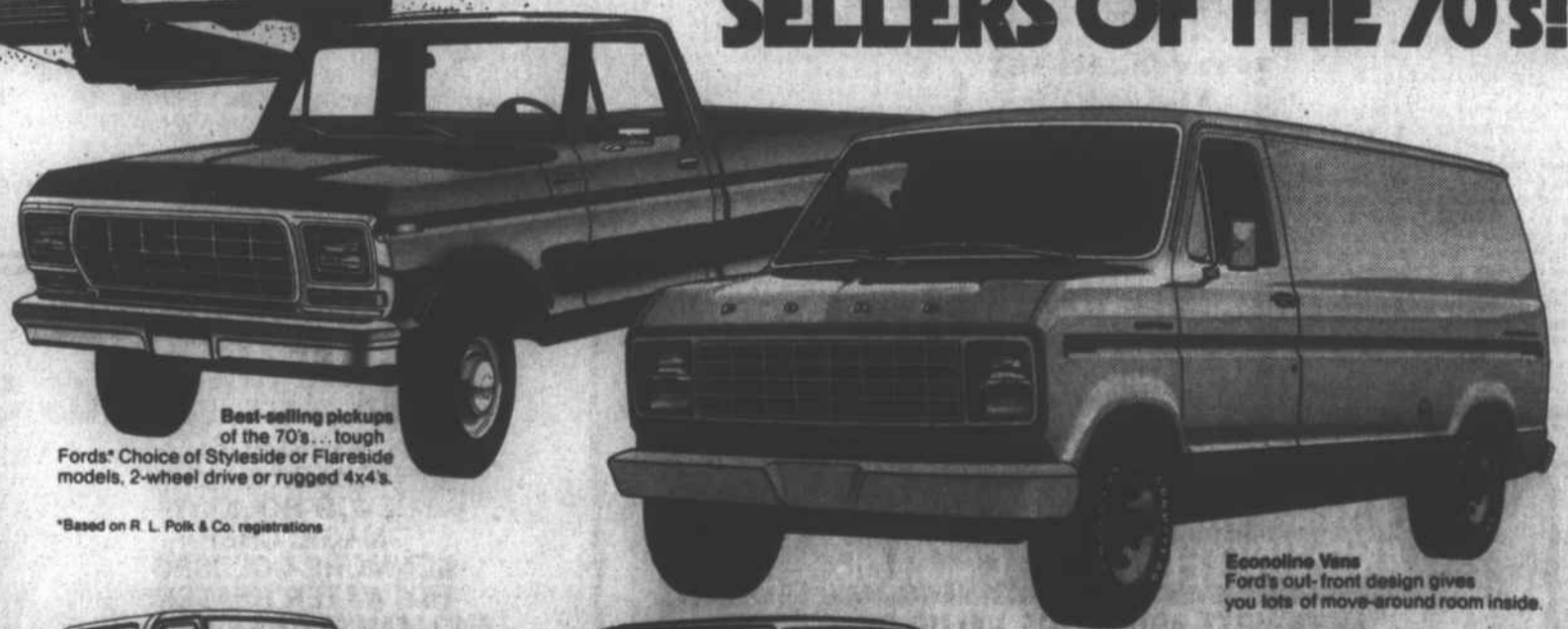
(SAVE \$1,280) (1,296 SQ. FT.)

TIMBERLINE REALTY CO.

214 Parkway Office Building
170 Woodfin Street
Asheville, North Carolina
704/258-1380

WE'RE CELEBRATING FORD TRUCK WEEK

WITH OUR BEST DEALS... ON THE BEST SELLERS OF THE 70's!



Best-selling pickups of the 70's... tough Fords' Choice of Styleside or Flareside models, 2-wheel drive or rugged 4x4's.

*Based on R. L. Polk & Co. registrations

Econoline Vans Ford's out-front design gives you lots of move-around room inside.



Broncos Tough Ford 4-wheelers that invite comparison. Roomy comfort for six with optional bench seats.



Club Wagons designed to bring the whole gang and their gear together. Seating for up to 15 with Super Wagons.



Sporty Ranchero the personal pickup with full-size comfort and capacity. Whatever Ford you pick... there's a great deal waiting for you.

PIONEER FORD INC.

MAIN STREET

MARSHALL