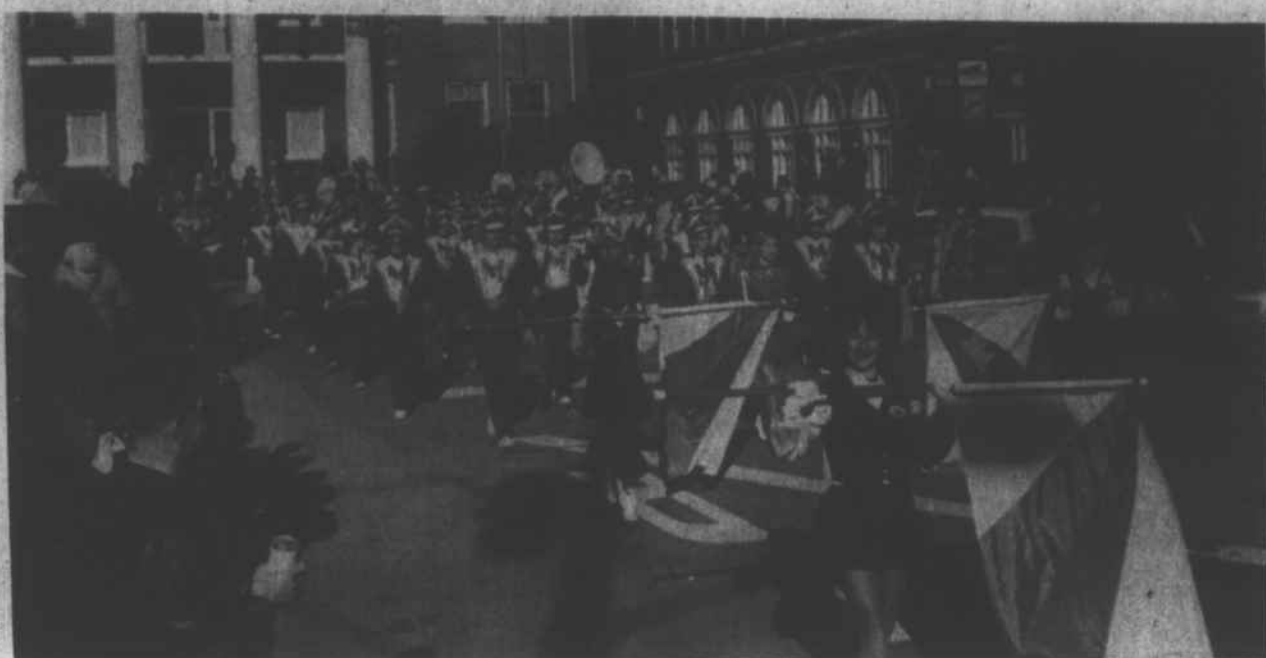


# Marshall Christmas Parade Begins Holiday Season

Photos By N. Hancock



MADISON HIGH SCHOOL marching band, directed by Harry Owenby, provided cadence and music for the Marshall Mer-

chants Association Christmas parade held Saturday.

SANDY DEITZ, 1981 Madison High School homecoming queen, shares a smile and a wave to bystanders near the Marshall Post Office.



STEPHEN RANDALL, 1½, was thoroughly engrossed in the clogging teams that performed in front of the courthouse on Main Street.

MISS JUDY JACKSON along with Brian Moore, 4, (left) and Jeffrey Moore, 3, take advantage of the

steps at the Department of Social Services building to watch the Christmas procession.

JONATHAN (left) and Wesley Bullman give it their all as the Walnut Ridgerunners clogging

team stomp out sophisticated syncopated steps involved in precision team clogging.



PARADE SPECTATORS gathered around the intersection of Main and Bridge streets to

watch the Marshall Hillbilly Cloggers during a brief stop in the parade.



"YES, VIRGINIA, there is a Santa Claus," as Virginia Collins, 13, found out Saturday as she rode the Marshall Fire Department fire

engine with the jolly old man himself, Virginia aided Santa in tossing candy to youngsters who lined the parade route.



RANDY RIDDLE show signs of fatigue as the Marshall Hillbilly Cloggers perform their routine for parade watchers.

YOUR LEADING  
**CAROLINA**  
Chevrolet  
DEALER

**CHEVY**  
**IS NO.**

1

IN  
SMALL  
CAR  
SALES

YEAR - END  
CLEARANCE SALE  
USED TRUCKS

- 1980 FORD COURIER PICK-UP, 4 Speed
- 1980 MAZDA PICK-UP, 4 Speed
- 1977 CHEVROLET 1-TON DUAL WHEEL, Long Wheel Base, Flat Bed
- 1977 CJ-5 JEEP, Big Tires, A Good Buy

☆☆☆

USED CARS

- 1980 CHEVETTE, 2 Door, Automatic, Air
- 1977 CAMARO COUPE, Automatic, Air
- 1974 VOLKSWAGON, 4 Speed, Good Condition
- 1976 AMC PACER, 6 Cyl., Automatic, Air, Clean
- 1975 FORD LTD, Automatic, Air, Good Condition

SEE and DRIVE  
THE ALL NEW  
1982 S-10 TRUCKS  
FRENCH BROAD  
CHEVROLET CO. INC.

Main Street
Dealer No. 2456
Marshall