

# BIG AUCTION SALE

## OF THE BUCK GUY PLACE

now owned by D. B. Denning

### FRIDAY, JANUARY 30th, 1920

This valuable farm has been cut into small tracts and will be sold at your own price.  
Land adjoins the lands of John Sorrell and W. R. Denning in Grove Township, Harnett County.  
Don't fail to come.

EASY TERMS

BAND CONCERT

CASH PRIZES

Standard Realty & Sales Co.

H. P. STEVENS  
Manager

Selling Agents, Raleigh N. C.

### PRETTIEST CARS IN TOWN

**AMERICAN**  
Balanced Six

New straight line body, Stromberg Carburetor, heavy Crown fenders, Beauty, Comfort and Dependability in every line.

In Stock in 5-passenger, Roadster and Sedan models.

You are bound to Recognize these beauties when you see them in Dunn streets.

Watch them and then ask for Demonstration.

**Smith & Prince**

#### FOR SALE OR RENT

140 acres of lands near Coats, N. C. about half cleared one good dwelling and one small tenant house. Will sell cheap for cash or on easy terms or will rent and furnish Fertilizers. Call at once.

W. H. LANE

At Lane's Stables.



Enjoy your family circle under bright, safe, convenient electric light

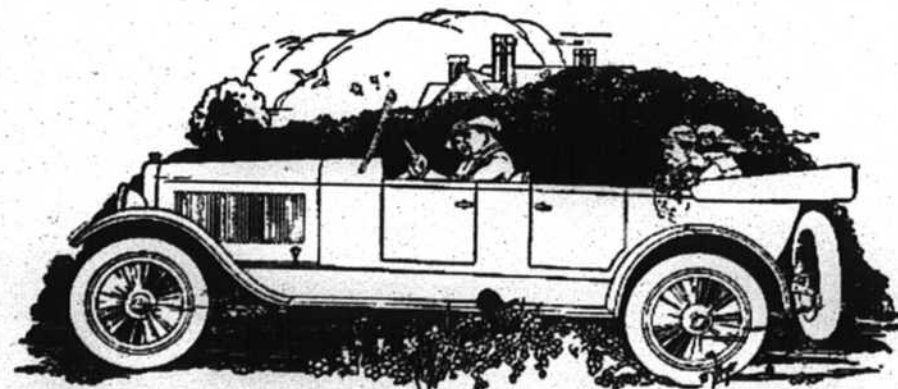
**DELCO-LIGHT**  
The complete Electric Light and Power Plant

E. J. HUDSON, Dealer Dunn, N. C.

#### SUPREME COURT GIVES WETS ANOTHER SETBACK

Washington, Jan. 12.—Steps to bring test proceeding for the determination of the constitutionality of the prohibition amendment to the Federal constitution, received a setback today when the Supreme court denied, for lack of jurisdiction, motions filed on behalf of the Retail Liquor Dealers Association of New Jersey seeking permission to institute an original suit for that purpose. The denial, however, does not determine the efforts to expedite determination of the question for motions filed by the State of Rhode Island asking similar permission were argued today and remain to be acted upon. As the Federal amendment becomes effective Friday, action on the Rhode Island motion within the next few days is anticipated.

### CHANDLER SIX Famous For Its Marvelous Motor



### Thousands Choose The Chandler Dispatch

MANY admirers of the Chandler Six choose the Chandler Dispatch. For two years this model has outsold all other cars of the so-called sport type. Its popularity is one of the high spots in motordom.

The new series Dispatch is a snappy, handsome car, seating four adults in perfect comfort. It is of most beautiful design, and finish; mounted on the standard Chandler Chassis, famous for its mechanical excellence.

You are asked to pay much more for cars which might perhaps be compared with the Chandler. And cheap cars sell for but little less.

#### SIX SPLENDID BODY TYPES

Seven-Passenger Touring Car, \$1895  
Four-Passenger Roadster, \$1895  
Four-Passenger Dispatch Car, \$1975  
Seven-Passenger Sedan, \$2395  
Four-Passenger Coupe, \$2795  
Limousine, \$3395  
(All prices f. o. b. Cleveland)

E. V. GAINEY, Dealer, Dunn, N. C.

CHANDLER MOTOR CAR COMPANY, CLEVELAND, OHIO

INFANTRY HELLS MANY IN  
EPIDEMIC RAGING IN JAPAN  
according to a cablegram received to-  
day from Tokio. The government  
has taken emergency measures to  
prevent the epidemic from spreading  
to other parts of the country.

The rivalry of two trade unions at  
Maynard, Mass., resulted in a walkout  
of 20 per cent of the operatives of a  
large woolen mill.

ASHEVILLE HOTEL PROJECTED  
TO COST OVER A MILLION  
Asheville, Jan. 21.—If plans which  
are now under way materialize as

expected, announcement will be made  
within a week of the decision to erect  
in Asheville a hotel to cost \$1,250,000.  
Local committees are busy this  
week, working with investors, who  
are here ready to finance the hotel  
if the proper site can be secured, and  
it is believed that this site can be  
decided on within the next week.