

PATTY ARBUCKLE IS THROUGH WITH ACTING

Los Angeles, Jan. 31.—Roscoe C. "Patty" Arbuckle announced last night that he had signed a contract to direct moving pictures for a comedy moving picture corporation and "that he was done with acting."

"My greatest ambition is to make people laugh and make them happy and I can do it best as a director of comedies," he said in a prepared statement. "This is my chance to make good in the right way and in the profession that I know and love and in a way that will meet the approval of all. I start work at once, and from now on you will hear from me only through the medium of the comedies that I direct."

The comedian recently announced he would appear in a film being made

in a Hollywood studio. Religious and other organizations in various parts of the country protested against the reinstatement of the actor because of the nature of testimony produced in his trials for manslaughter in connection with the death of Miss Virginia Rappé in San Francisco last year which ended in his acquittal.

Some citizens object to the ship subsidy bill because the ships will get the subsidy and the public will get the bill.—Nashville Southern Lumberman.

WHO ARE THE POOR?
The teaching of all history, as Geo. H. Stevenson says in our thought for the week, is that the farmer can never—in fact no one can ever—prosper as a mere producer of raw materials. Then men who dig coal

live in huts; the men who sell and handle it in fine houses.

The men who cut timber and run lumber-saws live in shacks and cabins; the men who manufacture lumber and sell it are well housed. The men who grow cattle and make small profits; the packers and distributors are prosperous. The men who make peanuts are poor, the cleaners and distributors are wealthy. The men who make cotton and tobacco and sugar cane live humbly; those who buy and handle and manufacture these products live more prosperously.

And so the farmer is fighting today for a larger share of the wealth.

While there is a difference of opinion about capital punishment, all good farmers agree that it is all right when applied to scab bulls.

that he erases. He is fighting to be something more than a producer of raw materials. He is fighting to get and keep for himself the profits that come from handling and distributing—and wiser handling and distributing—of the products of his toil. He is fighting to bring about a realization of the prophecy uttered nearly three thousand years ago—

"They shall build houses and inhabit them; and they shall plant vineyards and eat the fruit of them. They shall not build and another inhabit; they shall not plant and another eat."—Clarence Poe.

BOLL WEevil INJURY THIS YEAR

Raleigh, Jan. 17.—All of the area of a line drawn through from Hickory in Catawba County to Salisbury in Rowan, across to Raleigh in Wake and to Washington and Beaufort in Beaufort and straight through Hyde County to the coast was first invaded by boll weevil in 1922 and is due for only light injury this year, says Franklin Sherman of the Division of Entomology, N. C. Extension Service. Mr. Sherman says that the injury will be heavier near the line and to the eastward but it will be in 1924 before this section will be seriously hurt and that the cotton grower has this one other chance to make nearly a

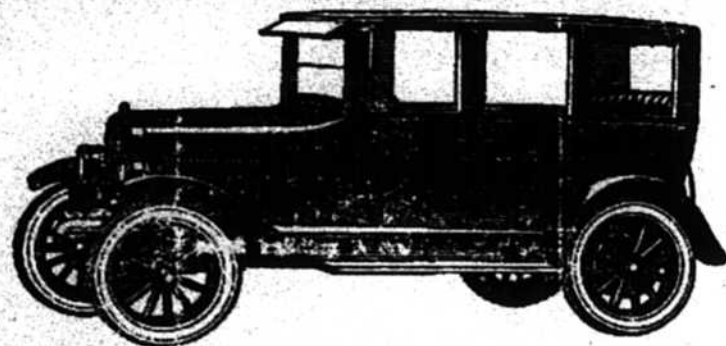
and the farmer should inform himself correctly about the best methods.

and crop of cotton if he uses good cultural methods and picks up the fallen squares.

The heavy rains of 1922 will be one of the line mentioned. West of a line from Murfreesboro to Raleigh the cotton farmers will lose from 10 to 20 per cent of their crop, with heavier loss to the south. Here good cultural methods, picking squares once each week to the end of July and use of the dust poison in the more heavily infested areas should be practiced.

West of a line from Lumberton to Greenville, the injury will probably run between 20 to 30 per cent, and east of this line, the injury will be from 30 to 50 per cent. On the west side, good cultural methods should be practiced to the fullest extent and the dust poison used. East of this line, though the farmers do not depend so greatly on cotton, they should make still further reductions in acreage and fight the weevil for the remaining acreage by using the dust method, better seed, better cultivation and fertilization and pick the fallen squares and burn them.

Mr. Sherman will be glad to furnish information about the boll weevil to any farmer who will write him at Raleigh or who will call at his office. He states that now is the time to make preparation for fighting the pest



Plus Value in Brimming Measure

The New Overland Sedan gives you everything that other sedan values of today would lead you to expect, plus:

- greater comfort. Triplex Springs (patented) which provide riding qualities not duplicated in any other car of the same size.
- greater beauty. The hood is higher. The lines are longer. The steel body is finished in Royal Blue.
- greater economy. Twenty-five and more miles to the gallon of gasoline. Six Timken bearings in front and rear axles. Oversize, first quality Fisk Cord tires.

The New **Overland**
Sedan \$860
Touring \$525 Roadster \$525 Coupe \$794
All prices f. o. b. Toledo

E. V. GAINEY, DEALER
Dunn, North Carolina

"Strong and Well"

"I wish you could know how much I am improved since taking the Cardui," writes Mrs. Nannie Brown, of Black Rock, Ark. "You wouldn't know me for the same weak invalid I was before I took it. At my... I had to keep off my feet or I would fall. I couldn't do my housework, and just got where I'd most as lief be dead as living. Some one told my husband of Cardui. He got

it for me and I took three bottles before I stopped—then off and on for the last three years just as a tonic. I saw a decided improvement after my first bottle. I used the three, and was able to do my work with ease, and now I sew for my family and for others. I am feeling fine, and strong and well."

Take Cardui! It may be just the medicine you need.

CARDUI
The Woman's Tonic

Ford
TRUCK CHASSIS
New Price
\$380
F. O. B. DETROIT

The Ford One-Ton Truck Chassis has proved its ability to reduce transportation costs in practically every line of business where there is a hauling problem. It is economical, efficient, dependable. At the new low price you will agree it represents a value that has never before been offered in the commercial car field. Place your order now for reasonably prompt delivery. Terms if desired.

J. W. THORNTON
Phone 177 DUNN, N. C.

BUTLER BROTHERS

Rather Than to Carry Over For Another Season We Will Sell Our Entire Stock Of

Automobile Robes

At And

BELOW COST

These Robes are now on display in our show windows and if you want one at a sacrifice price, now is the time to buy one. They will last years are cheaper now than they will ever be again. Full size and any color, wool and plush. Look in window at these beauties—then step in and let one of our salesmen sell you one.

5A PLUSH ROBES 5A Plush Robe, very warm, absolutely fast colors; perfectly clean; repels dirt and dust and don't absorb it; colors retain brightness. Was \$42.50, now \$25.00	PURITAN WOOL ROBES You will find these Robes to be an exceptionally good value. Warm, durable colors, and long life. They formerly sold for \$8.50; now to be closed out at \$5.48
5A PLUSH ROBES This Robe is also a great bargain. We sold them formerly at \$15.50, now \$10.48	LEADER WOOL ROBES This is all the name suggests and if you will ever need a Robe, buy this one, was \$12.50, now \$7.98

Butler Bros.
DUNN, NORTH CAROLINA

You Wouldn't Pay \$800 to \$1000 for Such Things

Yet That is Exactly What You May Do, if You Don't Know the Facts

Everything that goes into or on a motor car costs money. The buyer must pay for it.

So when you consider the two types of closed cars that sell under \$2000 think of what you are buying.

If you use a closed car to impress by its luxury appearance, then get the most you can for your money in the way of dome lights, vanity cases, clocks and such fittings.

But if you have first regard for car performance, look to the chassis. All reliability and low cost of operation begins there.

What Hudson Gives

The Hudson Coach is mounted on the famous Super-Six chassis. More than 120,000 owners know its reliability. And now with the new improved Super-Six motor, there is found a smoothness and motoring charm that thrills.

The \$1625 you pay for the Hudson Coach goes for qualities that are essential to genuine utility. Closed bodies mounted on cars comparable to the Super-Six in performance and enduring reliability cost \$800 to \$1000 more than the Hudson Coach.

Confirm this by comparing open car prices. The difference between open and closed car prices, for the most part, represents what you pay for fancy body fittings.

The Coach Endures

The Hudson Coach provides every closed car comfort. It is sturdy, long lasting, and good to look at. You will be proud of it.

But your greatest gratification will come from the performance of the car. In the Super-Six no one ever need give way when real motor performance is concerned.

Note the New Prices—Reduced \$100 to \$200

Speedster.....\$1425	Coach.....\$1525
7-Pass. Phaeton.....\$1475	Sedan.....\$2095

Freight and Tax Extra

D. P. S. MOTOR COMPANY, Dunn, North Carolina