

STOCK EXCHANGE MADE DEFENDANT

Suit For \$100,000 Damages
Filed As Result Of Piggy
Wiggly "Corner"

New York, Oct. 31.—A bill of complaint seeking \$100,000 damages from the New York Stock Exchange and affiliated firms, as a result of the Exchange's action following the "corner" on March 20th of the stock of Piggy Wiggly Stores, Inc., has been prepared by the law firm of Ewing, Alley and Voorhes on behalf of Frank C. Milton and Walter L. Smith, of Memphis, Tenn. Papers in the suit are being served on the defendants and will soon be filed in supreme court at Mineola, N. Y., the attorneys stated today.

Test Case
While counsel for the plaintiffs asks that it be made clear that Clarence Saunders, former president of the Piggy Wiggly Stores, Inc., who engineered the "corner," was not involved in any way in the present action, no secret was made of the fact that the proposed suit would be in the form of a test action to determine the legal right of the New York Stock Exchange to postpone the date of delivery of the stock which had been sold "short."

Ordinarily deliveries of stock sold on one day must be made by 2:15 o'clock the following afternoon. The plaintiffs in the present action will charge that the Stock Exchange, the clearing corporation and the individual members of Exchange committees entered into a conspiracy to "protect" members who had sold Piggy Wiggly stock "short" and were unable to make deliveries on March 21, the day following suspension of the stock by the Exchange.

Want Damages
The plaintiffs aver they were damaged to the extent of \$100,000 by the failure of three Stock Exchange firms—James F. Bennett and Company, Chicago, and Clark, Childs and Company, and A. A. Houseman and Company, both of New York, to deliver a block of 500 shares of Piggy Wiggly stock on March 21, the day following the purchase of the same.

The complaint will state that the plaintiffs bought 50 shares of stock through the Chicago firm on March 20; 300 shares being obtained from Clark, Collins and Company at 77 1-2 and 200 shares from A. A. Houseman and Company at 78, but that a ruling of the stock clearing corporation permitted the sellers of the stock, who had sold it short, to delay until March 26 in making actual delivery.

Charges Conspiracy
It will be charged that "many members of the New York Stock Exchange had sold many shares of Piggy Wiggly stock short for the purpose of depressing its market value," and that the action of the defendants in suspending trading and later postponing delivery on contracts entered into before the suspension was ordered "was illegal, unauthorized and void."

Officials of the Stock Exchange or the firms named as defendants declined to discuss the suit. Counsel for the complainant stated they had received a letter, however, from Exchange officials, offering to cooperate in bringing about a speedy

hearing of the case. Trading in the common stock of Piggy Wiggly Stores, Inc., was suspended by the governors of the Exchange at the close of business, March 20, after the stock had fluctuated sensationally throughout the day, jumping from 72 to 124 and then falling back almost as rapidly to 82, where it closed 10 points above the final quotation of the previous day.

HOT RETORTS TO IMPERIAL WIZARD

Catholics And Jews Take Sharp
Exception To Statements
Of Klan Head

Washington, Oct. 26.—Replies were issued yesterday on behalf of the National Catholic Welfare Conference and the executive committee of America to the address delivered at the Assembly of Orthodox Rabbis of Dallas, Tex. last night by Dr. W. H. Evans, Imperial Wizard of the Ku Klux Klan, outlining the Klan's attitude toward the Catholics and Jews.

Father John P. Burke, general secretary of the Catholic conference, declared Dr. Evans' statement regarding the Catholics in America had made the issue clear cut, adding that "it is for Americans to decide whether they will stand with their country or with the Klan."

Challenging the Klan to a joint debate Rabbi Simon Glazer, of the Great Synagogue, of New York, declared the question at issue was whether Jewish Americans are to be considered Americans, or according to the Klan, whether they must first be converted as Americans.

"The statement reported in today's press as made by W. H. Evans, Imperial Wizard of the Ku Klux Klan," said Father Burke's statement, "reveals without further question that the Klan's intolerance for the negroes, Jews and Catholics. Up to the present, in spite of statements and evidence to the contrary, the Klan has denied that it persecuted any of the above named."

"Evans states that the President of the United States is subordinate to the Priesthood at Rome; that the parochial schools of the country are a proof of divided allegiance on the part of Catholics. He offers no proof of these statements. He can not offer proof. They are deliberate, malicious misstatements, refuted completely, if refutation were needed, by the official declaration of the American bishops on American's entrance into the war; by the thousands of Catholics buried over seas; by the fact that the first American officer killed was educated in a Catholic school, and the last American killed was a Catholic priest."

"The Klan, through its official representative, sets at naught the declaration of independence, the Constitution of the United States and the constitution of every state in the United States. According to the Klan, the foundation on which our country was built religious and radical tolerance, can not endure."

The counties winning first prizes for agricultural exhibits at the State Fair this year are those which employ farm agents, Columbus county, with a new program of agriculture fostered by County Agent J. T. Lassar, won first place.

Wants Fortune, But Wants "Right Girl"

Taton, Calif., Oct. 30.—A wife by November 11 will be worth \$62,000 to J. P. Cominsky, 23, an employe of the Great Western Company here. A year ago an uncle left that sum to young Cominsky, provided he married by Armistice Day, 1923. Otherwise the \$62,000 goes to charity. As the deadline draws near Cominsky fears he may not find the "right girl."

Willis—What makes you think it is easier for a rich man to land in society than for an immigrant to land in America?

Gillis—In the former case the literacy test isn't as strict.—Life.

Error In Numbering Of One-Dollar Bills

Washington, Oct. 31.—Officials of the Bureau of Engraving and Printing have discovered an error in the numbering of several hundred thousand one-dollar bills, but announcement was made at the Treasury Tuesday that none of the bills had been released from the government engraving plant. The error, it was said, confused serial numbers of two issues, but was discovered in the final checking up.

The official statement explained that even had any of the bills been distributed they would not be acceptable as legal tender.

Mexican Bean Beetle Spreading In State

Raleigh, N. C. Oct. 30.—"It seems

as if life is just one bug after another," says Prof. Franklin Sherman, chief Division of Entomology. "While our eastern farmers are all safe over the boll weevil, our friends in the mountains have cause for uneasiness over the Mexican bean beetle."

"This insect became established in Alabama about 1919 and has spread chiefly to the northeast with some indications of a preference for rather high cool climate. It invaded our counties of Cherokee and Clay in 1921 and by the end of 1922 was in some six or eight counties. Meanwhile it spread across north Georgia and into South Carolina, and also through Tennessee and into Kentucky. During 1923 it has spread into the southwestern part of Virginia and into Ohio."

"Messrs. Mitchell and Harris of our force have just returned from a scouting tour to determine the limits of its spread in our State for this year. They have found it

in portions of the counties of York, Rutherford, Cleveland, and Lincoln, this presumably representing its northward spread from South Carolina. We also know it to be in Madison, which evidently is a result of spreading up the French Broad River from Tennessee. And of course our own State-bred beetles are spreading from county to county through our mountains. It is already known to be at Swannanoa in Buncombe.

"Mr. Crawford of this division has been located at Bryson City for the season, where he has made studies and tests looking toward the control of this pest. He is working in the light of facts already established by State and Federal workers in Alabama. While the control of this beetle presents some peculiar difficulties, yet there are methods which promise well, and these will be worked up for publication before next planting season."

"The insect is of the lady-beetle family, and can both crawl and fly freely. It is about one-fourth inch long, yellow or brassy with small black spots. A closely related species with larger spots is often found on pumpkin and squash. This new-comer has a decided preference for beans, especially the table varieties.

"On a recent trip I went into Cherokee county to sense the attitude of the people who have now had it in full force for two years. Some think it has been less destructive than last year. In many gardens early beans were eaten up, but later plantings, though damaged, have made a fair crop."

"It looks to me as if it will present as serious an issue, with regard to table beans as the common potato beetle did with regard to Irish potatoes fifty year ago."

THE BARNES & HOLLIDAY CO.

Undertakers and Embalmers

A full line of Coffins, Caskets and Burial Robes.
Service any time, anywhere.

Day Phone 11

Night Phone 70

Mammoth Dress Sale

Thursday, Friday, Saturday---November 8, 9, 10

Quality considered, the prices offered during this three-days' sale of Dresses are such as has never before been offered the buying public of Dunn and the Dunn District. In looking over our stock we find that our buyers bought too many Dresses and must get them out we are going to sell them during these three days at prices which will mean a great saving to you.

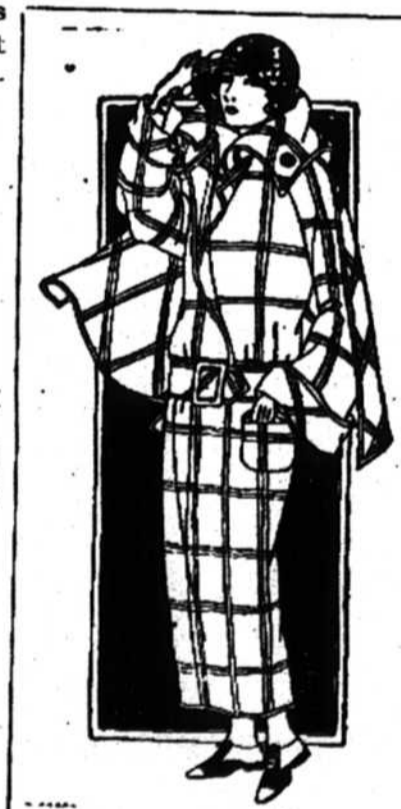


One big lot silk, wool and velvet dresses, all this season's goods of the newest materials, styles and shades, priced at \$37.50 to \$50, to be sold during these three days at—

\$29.50

One big lot Dresses, all newest materials in Silks, Wool and Velvets, values from \$29.50 to \$37.50 Your choice during these three days only—

\$22.50



ONE LOT DRESSES IN SILK AND WOOL, VALUES FROM \$22.50 TO \$30.00, WILL BE SOLD DURING THESE THREE DAYS ONLY AT

\$18.50

These Prices Will Prevail Only From Nov. 8th to 10th Inclusive

The FLEISHMAN BROS Co.

The Dependable Store
DUNN, N.C.



A Buick for Business

With its roadsters for 1924, Buick has again created a new standard of roadster utility and attractiveness. Not only the appearance of this four-cylinder two-passenger model convey in full its story. The famous Buick valve-in-head engine provides even greater flexibility and acceleration than before. The proved Buick four-wheel brakes assure more than ample safety for any emergency.

Business of today demands a sturdy, powerful, safe and dependable car—one that remains constantly in service. This new two-passenger, four-cylinder Roadster is one of Buick's contributions and answers to this demand.

GREEN'S BUICK SERVICE STATION
DUNN, NORTH CAROLINA
BUICK MOTOR COMPANY
FLINT, MICHIGAN