

SCOTT'S SCRAP BOOK

By R. J. SCOTT

One of the biggest trees in the world is the Banyan tree at BONGKASA, ISLAND of BAHU. It covers 400 ACRES OF GROUND AND IS USED AS A NATURAL TEMPLE.

**SCRAPS**

**Buck**  
NEWSOM ONCE PINCHED FIVE HINNINGS WITH A BROKEN LEG.

HOW MANY MILES OF SNOW FENCES ARE USED IN THE U.S. TO KEEP SNOWDRIFTS OFF HIGHWAYS?  
ABOUT 18,400 MILES.

THE WORD MUCKEY COMES FROM THE NAME OF A HAWK.

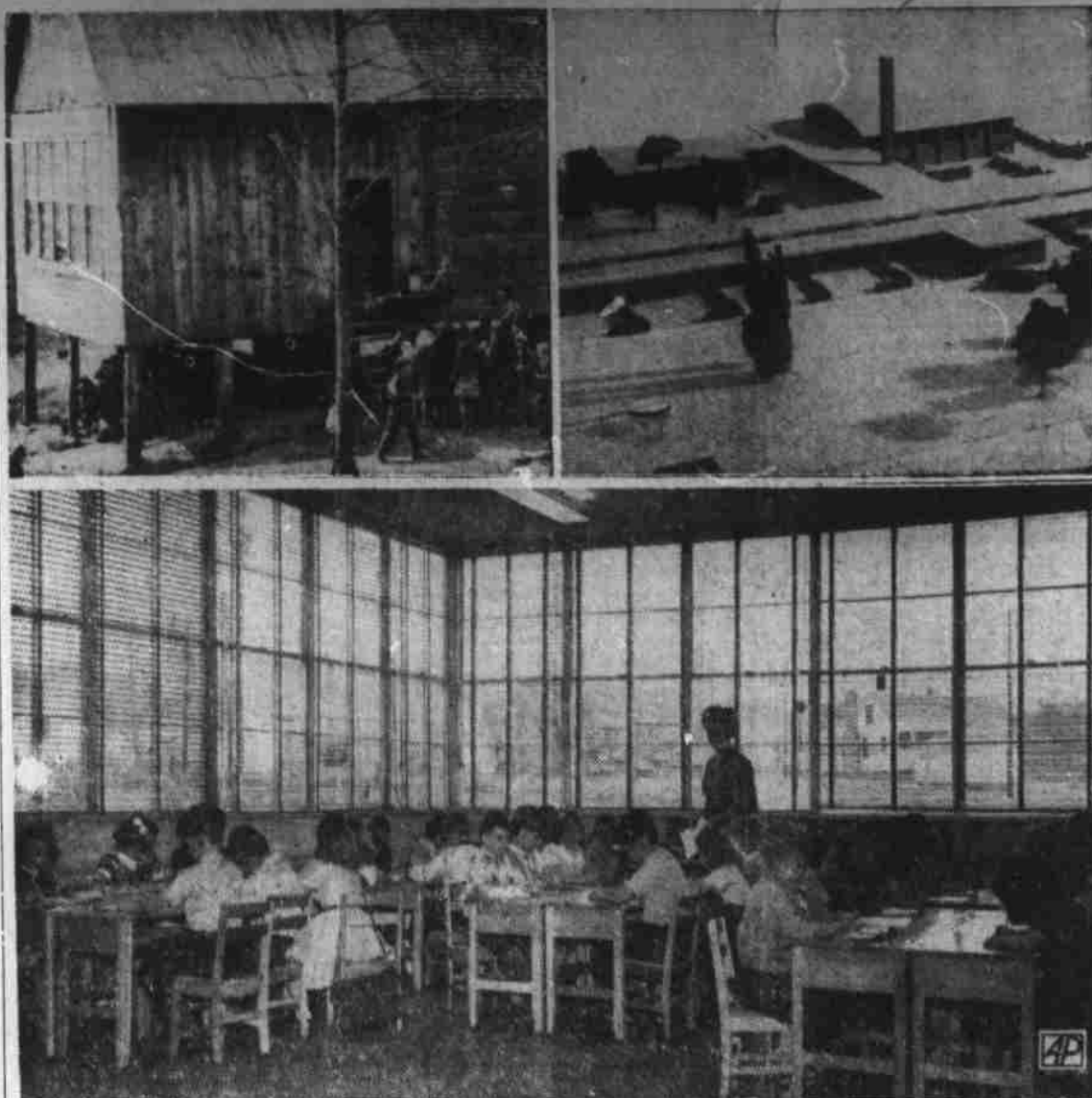
CAR-TUNES

By WATKINS CHEVROLET CO.



"Don't shoot it Pappy! WATKINS CHEVROLET will trade us a good used car for it."

'Before' and 'After' In State School Architecture



A new style is dawning in North Carolina's \$100,000,000 school house construction program. The old style country school, such as the Ranger School (upper left) in Cherokee county with four teachers and 125 pupils, soon will be a thing of the past. In its place will be built schools similar to the architect's drawing (upper right) of the St. Paul's Elementary school in Robeson county for which contracts have been let. The new style of construction affords a maximum of natural light for class rooms. A typical example of this is a class room (bottom) in the new Chantilly school at Charlotte. (AP Photos).

Demonstrations On Pastures Being Held

Launched this morning was the first of a series of demonstrations illustrating the best methods for renovating pastures and seeding Ladino clover and orchard grass.

The initial demonstration was held at the farm of Manson Medford in the Iron Duff community, with Community Chairman Jarvis Caldwell in charge.

County Agent Wayne Corpening explained that for these demonstrations, scheduled for organized communities throughout the county, Haywood farm equipment deal-

ers are supplying the machinery, with the only cost to the individual farmer that of supplying the seed.

These demonstrations are to be carried out on one to five acres on each of the farms selected.

This afternoon, another demonstration is scheduled at the farm of Marshall Kirkpatrick in Lower Crabtree. Mr. Kirkpatrick is chairman of the Lower Crabtree community.

The remainder of the schedule for this week and early next week: Friday morning—farm of P. N. Higgins in Morning Star, Community Chairman Noel Fisher in charge; Friday afternoon—farm of Hominy Community Chairman Hershel Hipps;

Saturday morning—farm of Ray Stevens in Saunook, the Rev. Fernando Stevens, community chairman, in charge;

Monday afternoon—Harley Francis farm in Ratcliffe Cove, Chairman R. C. Francis in charge;

Tuesday, 9:30 A. M.—Mrs. Thad Cathey's farm, South Clyde, chairman William Osborne in charge.

No Business Boom Foreseen in 1950

CHICAGO (UP)—A University of Chicago finance professor says that business is more likely to slump than boom in the last half of the year.

Garfield Cox, dean of the university's school of business, said he believes, however, that this will be a year of overall stability.

He made the forecast at a symposium on "the business outlook for 1950."

"A large federal cash deficit during prosperity is in the long view seriously disturbing, but it seems unlikely to generate renewed price inflation in 1950," Cox said.

"The wholesale price index is not likely to move very far from its present level. Public spending probably will increase no more than business spending shrinks.

"Unless bad weather cuts crop yields, any strength the general price index shows in the next few months is likely to be more than canceled later in the year."

Cox predicted that the nation's personal income total would run close to last year's \$212,000,000,000.

**FONTANA VILLAGE**  
NORTH CAROLINA

**NOW OPEN!**

- Excellent Food
- Good Fishing
- Bring Your Camera

Come now, this week-end, to beautiful Fontana Village, high in the Great Smokies near world's 4th largest dam. Enjoy wonderful meals... catch fighting bass... plenty to do for the whole family. Rates are reasonable—stay as long as you wish.

**FREE COLOR FOLDER**

Write: Res. Mgr., P. O. Box 637  
FONTANA VILLAGE, N. C.

MILK RUN FOR FIREMEN

STARKVILLE, Miss. (UP)—The fire department answered an alarm at Mississippi State College dairy barn, but found they were just in for a milk run. The students had decided that a silo was too old for further use and had set it on fire, forgetting to notify the fire fighters.

BANDIT IS PROMISED

CAMBRIDGE, Mass. (UP)—A young bandit who had been James, druggist, and was of \$80 told him: "This is the time I ever did this. It's a pity. I'll return the money. James is still waiting for a date."

**MR. FARMER** — We Can Help You Increase Your Yield With Our Proven

**DEPENDABLE FERTILIZERS**

and **CERTIFIED SEEDS**

Bring In Your PMA Orders For

SEEDS	FERTILIZERS
* White Dutch Clover	* 18%, 20% and 30% PHOSPHATE
* Ky. Blue Grass	* 2-12-12
* Ladino Clover	* 0-9-27
* Orchard Grass	* 0-14-14
* Alta Fescue	

We have a complete line of all other seeds and Fertilizers—

**HAYWOOD COUNTY FARMERS CO-OP INC.**

Phone 722 Depot St.

**2 1-2 PER CENT PENALTY ON TAXES AFTER APRIL 1st**

**Pay Your Haywood County Taxes NOW And Avoid Further Penalty!**

**SAVE YOURSELF AN ADDITIONAL PENALTY BY PAYING NOW!**

**SEBE BRYSON**  
Haywood County Tax Collector

**ATTENTION FARMERS!**

**Ford TRACTOR WITH Dearborn FARM EQUIPMENT GETS MORE DONE**

- ★ Faster
- ★ Easier
- ★ Cheaper

Here is an example of how easy it is to own a FORD TRACTOR and DEARBORN FARM EQUIPMENT by using the convenient Dearborn Two Crop Equal Payment Plan...

Ford Tractor, Delivered and Demonstrated	\$1375.00
12" Dearborn Moldboard Plow	192.00
Dearborn Tandem Disc Harrow	214.00
	\$1781.00
Plus Tax	27.18
Also monthly payments if desired. 3.2% Interest. No carrying charges.	\$1808.18
Down Payment	733.18
Balance	\$1075.00

Balance of \$1075.00 to be made in two Crop Equal Payments of \$572.44 in November 1950 and \$572.44 in November of 1951. There is absolutely NO Carrying Charges... Just a small interest charge.

**TAKE ADVANTAGE OF THIS EASY WAY TO OWN A FORD TRACTOR AND DEARBORN FARM EQUIPMENT!**

Don't let the weather or anything else keep you from making the most out of your farm.

**CALL US FOR A DEMONSTRATION TODAY!**

**FORD TRACTOR**

- ★ WORKS MORE HOURS
- ★ SAVES MORE HOURS
- ★ GETS MORE DONE

— ALL YEAR 'ROUND!

**Mountain Supply Company**  
Waynesville  
Phone 461