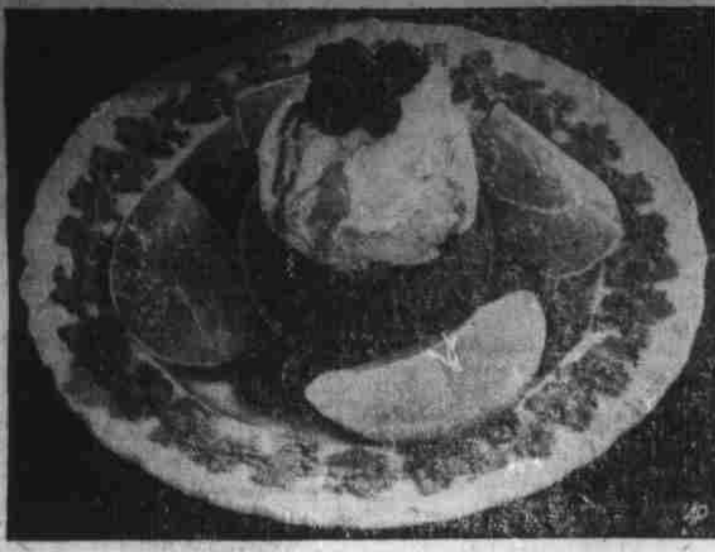


Sunshine on the Table



PEACH MELBA . . . Quicky dessert favorite.

By CECILY BROWNSTONE
Associated Press Food Editor

There are lots of canned peaches around these days so why not try this fruit for springtime meals? For a weekday or Saturday lunch, team them with such nutritious and delicious dairy foods as cheese and milk—Papa, Mamma, and the kids will be bursting with vitamins. I particularly like cottage cheese with the peaches, as shown in

the salad pictured here, but cream cheese is delicious, too. For color contrast on your salad add strips of green pepper, a black olive and lettuce. For texture contrast serve with crisp rye wafers. If anyone in your family is dieting serve the salad without dressing, the cottage cheese "as is," and the crisp rye wafers without butter. For non-dieters add sour cream to the cheese, bring on a savory French dressing, pass the butter!

For a dinnertime dessert you might try doughnuts peach-Melba style. I like my doughnuts plain, but if you have a compulsion to fancy them up, combine doughnuts, ice cream, peaches and frozen raspberries for a quick Peach Melba.

What to do with the syrup from the peaches after you've used the fruit itself in salad or dessert? Here's a recipe solution!

PEACH CHERIO SAUCE

Ingredients. 1 cup syrup from canned cling peaches, 2 tablespoons syrup from maraschino cherries, 1½ teaspoons cornstarch, 1 tablespoon sugar, dash of salt, ¼ cup canned cling peach slices or other diced fruit, 2 tablespoons quartered maraschino cherries.

Method: Heat peach and cherry syrups together. Blend cornstarch, sugar, and salt; add to fruit syrups and cook, stirring constantly, until thickened and bubbly. Boil a minute or two longer. Remove from heat and stir in sliced peaches or other fruit and cherries. Chill. Serve on ice cream, custard, rice or cottage pudding. Makes about 1½ cups sauce.



DIETERS' DELIGHT . . . Cottage cheese and rye wafers.

Francis Cove Birthday Party To Observe First Year Of CD Program

By Mrs. Bill Hollingsworth
(Mountaineer Correspondent).

Next Saturday, Francis Cove's Development program will be exactly one year old—and the residents aren't going to let this event slip by without some attention.

At 8 o'clock that night at the Francis Cove church they'll throw a birthday party for the community with cake and punch and everything that makes a birthday bright.

Bob Boone will be in charge of the event as community chairman. It also will be the first birthday of his election as head of the Community program.

It was the night of April 8, 1949 that the folk in this community started organizing by electing their principal officers.

Besides naming Mr. Boone as chairman, they elected Vinson Mc-

Elroy as vice-chairman; Mrs. Calkins as secretary; Mrs. Calkins as treasurer; and Mrs. Williams as reporter.

Shortly after the first year, Mr. Boone again was to be head of the community program for the second year of its life.

The residents of the community will combine their annual party with the birthday celebration.

WATCHES CLOCKS FOR 50 YEARS

PEORIA, Ill.—(AP)—A. J. Brown has been a clock for 50 years. He soon will put out a half century of students how to repair watches at Bradley school of horology.

Cecil Names Officers For 1950 Program

Cecil's Community Development Program for 1950 was launched Tuesday night by an audience of 150 residents meeting at the Cecil School.

They elected Carl Green as chairman; Robert Messer, vice-chairman; Clyde Caldwell, treasurer; Mrs. Margaret Rogers, secretary; and Mrs. Edgar Burnette, reporter.

During the course of the busy session also they heard discussions and saw films of the results of a recent survey to determine the best practices for use in improving the farm and the home.

Conducting this phase of the meeting were County Agent Wayne Corpening, Home Demonstration Agent Mary Cornwell, and Assistant County Agents Turner Cathey and Wayne Franklin.

The Cecil residents will round out their 1950 Community Development Program organization tomorrow night with the appointment of their special committees.

The session is scheduled to open at 7:30 p.m. at the Cecil School.

Another feature of the program will be the showing of The Champion Paper and Fibre Company film, "The Price of Freedom." Mr. Franklin will handle the projector.

Beaverdam To Name 1950 CDP Leaders Tuesday

The residents of Beaverdam will organize for the 1950 Community Development Program on Tuesday by electing their officers when they meet at the Beaverdam School.

The session is scheduled to open at 7:30 p.m.

During the meeting also, Assistant County Agent Wayne Franklin will show "The Champion Paper and Fibre Company film, "The Price of Freedom," which has received enthusiastic receptions by audiences throughout Haywood County.

Last Monday night, approximately 150 Beaverdam folks attended the meeting featuring the discussion of the home and farm planning program.

Taking part in this session were Mr. Franklin, County Agent Wayne Corpening, Assistant County Agent Turner Cathey, and Miss Mary Cornwell, county home demonstration agent.

Keep a box of dried apricots handy for after-school snacks for the children. They'll enjoy prunes and raisins eaten out-of-hand, too.

Announcer Found



Ray Reeve (above), widely known in North Carolina as a sports announcer for radio station WRAL at Raleigh, who was missing mysteriously since March 18, was recently found in a Sarasota, Fla., hospital. (AP Photo).



EGG DYE RIT
Pkg. 10c
PAAS
Pkg. 15c



WHITE YARD EGGS FOR DYEING . . . Doz. 41c

KRAFT DINNER 2 Pkgs. 25c

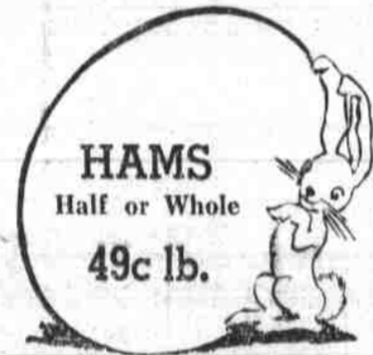
MIRACLE DRESSING Qt. 55c



Snowdrift SHORTENING 3 Lb. Can 77c

No. 2 Sliced PINEAPPLE . . . 29c

No. 2½ Halves STOKELY'S PEACHES . . . 25c



HAMS Half or Whole 49c lb.

Vegetables

GREEN BEANS 2 lbs. 25c

U. S. No. 1 RED BLISS POTATOES . . . 5 lbs. 25c

U. S. No. 1 WHITE POTATOES . . . 10 lbs. 39c

Fresh Green CABBAGE . . . 3 lbs. 14c

MEATS

Fresh Dressed HENS . . . lb. 45c

U. S. GOOD BEEF—BONELESS CHUCK ROAST . . . lb. 69c

Fresh Ground BEEF . . . lb. 49c

Dixie Colored OLEO, ¼ lb. Sticks, lb. 29c



STARKIST Chunk Style TUNA Can 35c

12 Oz. Old Virginia STRAWBERRY PRESERVES 33c

Pillsbury's Chocolate Cake Mix, Pkg. 25c



H.C. ORANGE-ADE 46 Oz. Can 29c

FLOUR

25 LB. PRINT BAG GUARANTEED \$1.63

BEECH-NUT GRADE A

PEANUT BUTTER 11-oz. Jar 35c



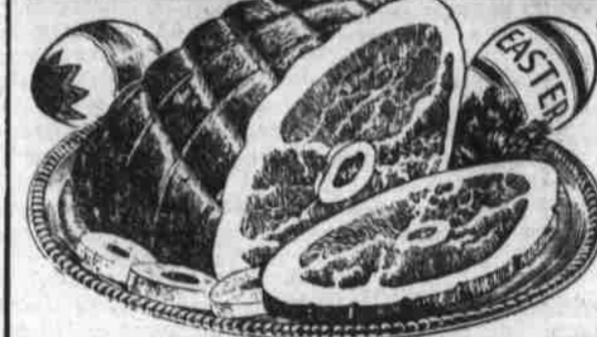
VIGORO FOR LAWNS AND GARDENS

ONION SETS—PEA SEED—CABBAGE PLANTS—BEAN SEED

CASH GROCERY

"The Best the Market Affords" MAIN STREET . . . HAZELWOOD

HAPPY EASTER FEAST!



Lay's Cloverleaf Smoked

HAMS 8 to 12-Lb. Small Sizes Lb. 49¢ Whole or Half

From small tender pig hams, 8 to 12-Lb. average. Bake a whole ham for even cooking and less shrinkage! Get yours today!

Young, Quick Cooking TOM TURKEYS

14 to 16-Lb. Av. Whole or Half Lb. 59¢

Long Island, Dressed and Drawn Ducklings Lb. 59¢

"Quality-Tender" Beef Chuck Roast Lb. 59¢

Dressed and Drawn Fat Hens . . . Lb. 49¢

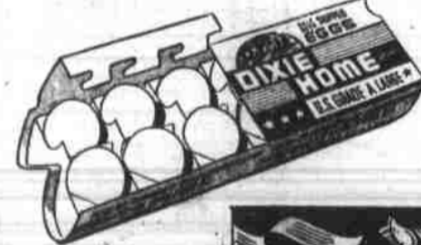
- Excella Fancy Pack Stuffed Olives 2-Oz. Bot. 19¢ Pillsbury Chocolate or White Trial Offer!
- Cake Mix . . . Lb. 23¢ Complete Pies! Chocolate, Lemon, Coconut
- 7-Minute Pie Mix Pkg. 25¢ Del. Maiz
- Niblets Corn 2 12-Oz. Cans 29¢ Standard Cut
- Green Beans 2 No. 2 Cans 35¢ Libby's Fancy
- Fruit Cocktail No. 2 Can 35¢ Alaska Pink
- Salmon . . . ½-Size Can 25¢ Paas
- Egg Dye Kit . . . Small Pkg. 15¢

Don't forget the kiddies! Color their eggs for Easter.

Dixie-Home U. S. Government Graded: Grade A Large Fresh Shipped

Fresh Eggs

Ctn. 45¢ Doz. Every Carton Dated for your Protection!



TRUE SOUTHERN HOSPITALITY IS OUR RULE FOR COURTESY



- Libby's Fancy Sliced Pineapple No. 2 Can 29¢
- Green Giant Big Tender Peas No. 303 Can 20¢
- Dixie-Home Popular Brand Coffee Silver Cup Lb. 67¢ Pkg.

- Dixie Home Creamery BUTTER ½-Lb. Sticks Lb. 69¢ ¼-Lb. Patties
- Philadelphia Cream CHEESE 3-Oz. Pkg. 16¢

- Libby's Fancy Tomato Juice 46-Oz. Can 27¢
- Hunt For The Best Hunt's Yellow Gling Peaches . . . 2 No. 2 Cans 47¢
- White House No. 303 Can Apple Sauce 2 Cans 25¢
- DelMonte Tomato Catsup . . . 2 16-Oz. Bottles 37¢
- Dixie Home Brand Coffee Gold Cup . . . 1-Lb. Pkg. 72¢
- H.C. Orange Ade 46-Oz. Can 29¢

Special Pack! Bath Size Soap Woodbury 2 Bars 20¢

Soap Flakes Lux Lge. Pkg. 25¢

Granulated Soap Rinso Lge. Pkg. 25¢

Cleanser BAB-O 2 Cans 23¢

- California Firm Heads Iceberg LETTUCE 2 Lge. Hds. 23¢
- California Snowball Cauliflower 1 Hd. 31¢

- Fancy Tender Green Beans 2 Lbs. 27¢
- New Red Bliss Potatoes . . . 5 Lbs. 27¢
- Juicy California Sunkist Lemons Doz. 31¢
- Juicy California Navel Oranges 2 Lbs. 21¢

Toilet Soap LUX SOAP 3 Reg. Bars 21¢

Regular Size Soap WOODBURY 3 Bars 21¢

Special Offer! Reg. Lotion Soap JERGEN'S 3 Bars 22¢

Regular Size Bars LIFEBOUY 3 Bars 21¢