

Tourists

(Continued from Page 1)
from five to ten thousand the publication of folders listing accommodations, and the folder is about

ready for the press. The group also approved a plan of cooperating with The Mountaineer in the publication of a special page twice a week in the interest of the visitors, listing new arrivals, activities, and information of general interest to the visitors.

**Grow Your Own Meat
Free COCKEREL CHICKS
SATURDAY, MAY 6**

Bring your own box. We will give you 15 COCKEREL CHICKS ABSOLUTELY FREE!
In ten to twelve weeks, you'll have delicious broilers for your table.

... We'll tell you how to raise them ...

COME EARLY

We have only 1500 chicks... First come first served.
5c extra if we furnish the boxes.

FOR YOUR FEEDS, SEEDS AND FERTILIZERS..... COME TO THE STORE WITH THE CHECKER BOARD SIGN.

KETNERS'

Phone 505

Lake Junaluska

Smith

(Continued from Page 1)

raised \$100 for the services of a band at this event. We offered the \$100 to the Waynesville band first, and upon learning it was not available for the 30-minute program, we made the same offer to the Canton band, and they accepted, and will be here.

Mr. Smith is scheduled to come to Waynesville on Friday night, and he and Mrs. Smith will spend the night with Mr. and Mrs. James Gwyn, the latter a sister of Mrs. Smith.

Should these plans be changed, the Haywood committee said they will form a motorcade and meet Mr. Smith upon his arrival Saturday morning and escort him to the Baptist church where the parade will form.

At present, it is expected that Mr. and Mrs. Smith will remain here until sometime Sunday.

The address from the court house will be broadcast over station WHCC, Sheriff Welch said. Mr. Smith's campaign headquarters in Raleigh announced that Mr. Smith is expected to make some "major statements of the campaign" in his address Saturday morning. No indication was given as to what "the statements" were.

Court

(Continued from page one)

ville; Jason White, Cataloochee; Mrs. Frank Kennedy, Jonathan Creek;

Charles Balentine, Waynesville; Lane Arrington, Waynesville; C. N. Allen, Waynesville; J. L. Westmoreland, Beavertown; Jarvis R. Caldwell, Iron Duff; Joe Wright, Waynesville; and R. O. Allen, Waynesville.

2 Haywood Men

(Continued from Page 1)

in traditionally Democratic Florida, his victory in the primary is regarded as equal to election.

Regarded as definitely opposed to the principal points in President Truman's program, he is definitely against the FEPC, the national health insurance proposals, and deficit spending.

He has been backing the Administration's foreign policy, however.

The son of Judge and Mrs. Frank Smathers, of Waynesville and Miami, he was born 36 years ago, in Atlantic City, N. J., where the elder Smathers was then a federal district judge.

An uncle, William Howell Smathers, was a U. S. Senator from New Jersey during the Roosevelt administration.

While studying at the University of Florida, he also got his introduction to politics—as a campaign worker for Senator Pepper. In the 1938 Pepper campaign, young Smathers was his campaign manager in Alachua county.

While at the University, he also stood out as an athlete captain of the basketball team and a trackman. Active in other phases of campus life, he was elected president of the student body, a college debating champ, and a member of a number of honorary societies.

This versatility won him election to the University's Hall of Fame.

Shortly after he started his law career, he was named assistant federal district attorney of Miami.

His war record covered 18 months in the Pacific in the 39 months in the Marines. When he received his honorable discharge, he held the rank of major.

Once out of uniform, he accepted an appointment as special assistant to the U. S. attorney general, prosecuting war frauds, but resigned to stage his successful campaign for the House of Representatives against the incumbent, Pat Cannon, who was then serving his fourth term.



ROBESON

Mr. Robeson, son of Edward J. and Sarah Frances Ferguson Robeson, though retired from the shipbuilding industry, still heads the Virginia Association of Manufacturers.

His winning margin was fashioned by heavy favorable votes from both labor and industry.

A star athlete during his university of Georgia student days, he was captain of the college track team, was a varsity halfback on the football team, and held down third base on the baseball team.

After getting his degree in civil engineering in 1910, Mr. Robeson started his professional career as a transitman for the Louisville and Nashville Railroad.

After that, he worked for mining firms, and played professional baseball before joining the shipbuilding firm in 1915—whose chief executive, incidentally, is Homer Ferguson, another Haywood County native.

From the company's civil engineering department, he worked his way through the jobs of ship-fitter, quartermaster, employment manager, personnel superintendent, and personnel manager.

In 1934, he became vice-president and personnel manager.

He and his wife, who was Miss Ruth Richards of Thomason, Ga., when they married in 1915, have three daughters and a son.

They're Mrs. J. W. Kirkpatrick of Albavista, Mrs. Robert Amster of Wilmington, Del.; Edward J. Robeson, III, associated with an insecticide control business at Augusta, Ga.; and Martha Robeson, who's a freshman at Newport News High School.

The impressive list of civic and church organizations of which he is an officer or a member reflects his varied interests.

Mr. Robeson is: Chairman of the board of stewards of Grace Methodist Church; Chairman of the board of managers of Riverside Hospital; member of Alpha Tau Omega fraternity; former director and vice-president of the Citizens Marine Jefferson Bank; member, Advisory Council of the Peninsula Industrial Committee, the Peninsula Association of Commerce; director, National Association of Manufacturers;

Director, Southern YMCA Assembly at Blue Ridge, N. C.; director, Southern Industrial Relations Conference; and management representative of President Truman's Labor-Management Council in 1946.

Cancer

(Continued from Page 1)

has contributed \$700 from their funds to aid in the treatment of these cases.

"The first year that help was received from the Society, only two cases were reported to the Welfare Department.

"The number of cases reported has increased each successive year. "We have always received splendid cooperation from the American Cancer Society when aid was needed for welfare cases."

In regard to the cancer situation, Mrs. Ellen Freeman, superintendent of nurses at Haywood County Hospital, had this to say:

"Ten cancer patients died in this hospital during the last year.

"However, the majority of the cancer patients admitted here are referred to other hospitals for further treatment—such as radium treatment, which cannot be administered by our staff.

"The number of cancer patients is increasing each year, and young people seem to be more susceptible to the disease than they were in the past.

"The cancer patient requires a great deal of nursing care."

And that reflects the reason for

Graham

(Continued from Page 1)

in the afternoon to meet other appointments in the Eastern part of the state.

A transcription of Mr. Graham's will be broadcast from 6:35 to 6:45 over WHCC Wednesday.

the annual fund-raising campaigns to fight cancer.

Workers are currently trying to raise funds to meet Haywood County's \$2,500 quota. Roughly half of this is being sought in the Waynesville area, where the Waynesville Junior Chamber of Commerce is sponsoring the campaign.

Marcus Ward, directing the local drive for the sponsoring Jay-Cees, cited official figures showing the seriousness of the situation in North Carolina.

One out of 11 deaths from all causes in this state is produced by cancer.

During the last 10 years, 24,368 people died of this disease. The annual death rate jumped from a total 1,525 in 1930 to 2,092 in 1940, with this year's, as indicated previously, expected to be nearly 50 per cent greater.

President



DR. PAUL REID will be inaugurated Saturday morning as president of Western Carolina Teachers College. Governor Kerr Scott and U. S. Senator Frank P. Graham will participate in the ceremonies at Cullowhee.

Prediction

Experts on plumbing equipment are predicting the return of the metal bath tub, but this time it will be a streamlined stainless steel creation.

Noland

(Continued from Page 1)

terms as Haywood county and county tax collector during long career in public life.

He was a native of Haywood County, and son of the late and Caroline Rhea Noland.

Surviving are four daughters: Mrs. L. G. Dotson, of Lake-luska; Mrs. Walter Francis, of neville route one, and Mrs. Camp, and Miss Frankie Noland, of Clyde route one. Grady Noland, of Waynesville, one.

A brother, John Noland of tree; two sisters, Mrs. J. R. of Canton, and Mrs. Martha of Waynesville; ten grandchildren and two great-grandchildren.

Fire

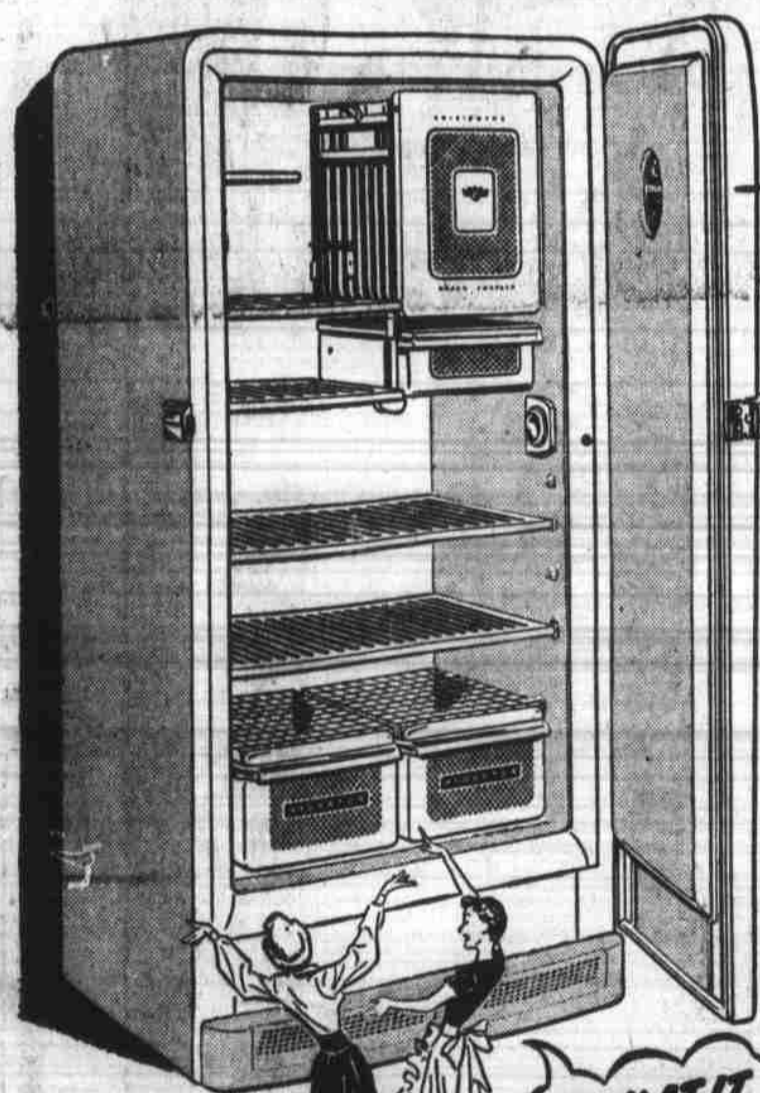
(Continued from Page 1)

"About all we could do," he ed, "was shoot water on the by pump house to prevent its becoming ignited."

The restaurant, built about years ago, had been owned and operated at various times by different persons during the course its existence.

They're new-new-new!
FRIGIDAIRE

Master Model Refrigerators for 1950



Only FRIGIDAIRE gives you all these features!

- New full-length food compartment in larger models
- All-aluminum, rust-proof, adjustable shelves
- New, deeper, all-porcelain stack-up Hydrators
- Exclusive Double-Easy Quickcube Trays
- New half-shelf and swing down shelf
- New, all-porcelain Multi-Purpose Tray
- New, all-porcelain Meat Tray
- More large space for big items
- More tall-bottle space
- Large food freezing space
- Famous, economical Meter-Miser mechanism

LOOK AT IT OUTSIDE!

LOOK AT IT INSIDE!

SEE PROOF! YOU CAN'T MATCH A FRIGIDAIRE!

Wherever you live—whatever the size of your family, kitchen or budget—be sure to see the new Frigidaire Refrigerators for 1950. See the complete line of sizes from 4 to 17 cu. ft.—see all the reasons why your No. 1 choice is America's No. 1 Refrigerator, FRIGIDAIRE!

7.6 cu. ft. Model Shown
\$234.75
Also in 9.2 & 11 cu. ft. Master Models

Come in! Get the Facts About All the New FRIGIDAIRE MODELS for 1950



MARTIN ELECTRIC CO.

PHONE 31

MAIN STREET

LOW PRICES **QUALITY FOODS** **EASY SHOPPING**

We're MOTHER'S LITTLE HELPERS - Every Day!

Canned Goods

- Libby No. 2 1/2 Peaches 25c
- White House No. 2 Apples 15c
- Niblets 12 Oz. Corn 2/29c
- A. Showers 17 Oz. Peas 2/35c
- Larsen 17 Oz. Veg - All 17c
- Eatwell Sardines 2/25c
- Bush No. 2 Hominy 3/25c

Baking Supplies

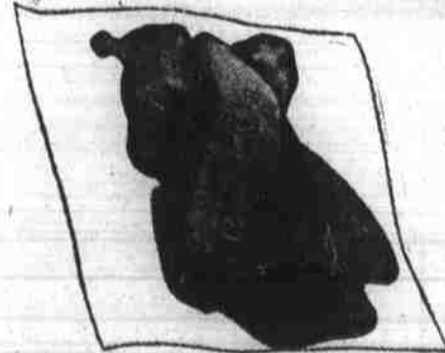
- Brown or 4X Sugar lb. 11c
- Hersheys Chocolate 1/2 lb. 37c
- Pillsbury Cake Mix Pkg. 23c
- Swansdown Cake Flour Pkg. 39c

For every day is Mother's Day to us. We're her busy little helpers, all right — Helping her to save money with our every day low prices—Helping her keep her family well fed and healthy with our vast variety of deliciously nutritious foods — Helping her with her housework with our large supplies of household necessities—Helping her save time and energy with our easy-to-shop displays that put the best buys at her fingertips.

Self-Service Produce

- Firm Crisp LETTUCE 2 for 25c
 - LEMONS Dozen 29c
 - ONIONS Bunch 219c
 - SPINACH Pound 225c
- Quality Produce Kept Fresh In REFRIGERATED Cases. Shop Here Today

Quality Meats



Young Tender

FRYERS

49c Lb.

- Pure Pork Sausage . lb. 35c
- Pork Shoulder Roast lb. 39c
- Prime Rib Roast . . lb. 69c
- Sliced Bacon lb. 43c

- Chase Sanborn Coffee 75c lb.
- Lipton's Tea 33c
- Santo Coffee 67c
- Nucoa Oleo 31c
- W.H. Apple Jelly 225c
- Morton's Salt Pkg. 10c
- Phila. Cream Cheese 16c
- Large Rinsos 25c
- Box Clorox 18c
- Quart Soap 10c

RAY'S SUPER MARKET

PARK • SHOP • SAVE

BEHIND THE POST OFFICE

FOOD STORE SUPER MARKET

MAIN STREET