

### Crabtree Young People Attend MYF Banquet

By Mrs. Millard Ferguson  
Community Reporter  
Thirteen delegates from the Crabtree Charge M.Y.F. attended the M.Y.F. Sub-district banquet at the Canton YMCA on Tuesday evening.

Mr. and Mrs. H. H. Holt have returned from Wrightsville, Ga. where they were called by the serious illness of Mrs. Holt's mother, Mrs. F. F. Hightower. She is much improved.

Congratulations to Mr. and Mrs. Herschell Bishop on the arrival of a daughter. Mrs. Bishop and baby are at the home of Mr. Bishop's parents, Mr. and Mrs. Bob Bishop while Mr. Bishop, who is in the Navy, is on a cruise somewhere in the Pacific.

Benton McCrary, stationed at Norfolk, Va., spent the weekend at the home of his parents to be with his grandmother, Mrs. W. J. McCrary, Sr., whose condition is still serious.

Mrs. Millard Ferguson attended the luncheon meeting on Friday of the United Daughters of the Confederacy at the home of Mrs. J. Hardin Howell, Sr., in Waynesville.

Glenn C. Palmer spent the weekend in Raleigh on business.

Mrs. B. F. Nesbitt was hostess on Friday to the Crabtree-Hyde-MT, home demonstration club. The

### Lowery Owen In Korea As Radar Specialist

IX CORPS, KOREA, Dec. 3 — Pvt. Lowery E. Owen, 24, whose wife, Lillian, and parents, Mr. and Mrs. Lowery M. Owen, live on Route 2, Waynesville, recently joined IX Corps in Korea.

The corps, one of three in Korea, coordinates the intensive post-graduate training and reconditioning of UN units under its control.

Private Owen, a radar specialist in the 235th Field Artillery Observation Battalion, entered the Army in December 1952 and was assigned to the 504th Signal Base Maintenance Company at Sacramento, Calif.

### Dog Is Lookout

HAVERHILL, Mass. (AP)—When police approached a house where they were certain a gambling game was in progress, a dog ran toward the door, barking. The place was empty when police entered with their warrant. They believe the dog had been trained to warn the gamblers.

Christmas motif was carried out and a turkey dinner and the exchange of gifts were enjoyed.

Mr. and Mrs. Turner Massie of Asheville were guests on Sunday of Mr. and Mrs. Mercus Massie.

Andy Ferguson and Howard Ireen have each purchased a Tomelton Chain Saw and are very much pleased with them.

### Make Holidays Gay With Apples



FAVORITE WAY TO SERVE APPLES — with Roquefort Spread.

By CECILY BROWNSTONE, Associated Press Food Editor  
MAKE THE MOST of apples at holiday time. Such a crisp, crunchy, comfortable fruit!

Serve apples our top-favorite way when guests drop in — or for just the family. Shine the rosy red fruit until it gleams, place it on a lazy susan or a tray and offer it with Basic Roquefort Spread or Dip.

To make the Roquefort accompaniment we allow a quarter to a half pound of Roquefort and a half pound of cream cheese to stand at room temperature to soften. Next we work them together with a wooden spoon and then force through a fine sieve to make

smooth. After that we thin with cream or mayonnaise—the amount depends on whether we are making a spread or a dip — and add dashes of Worcestershire sauce and celery salt. We serve our best fruit knives with the apples and let everyone cut his own slices to spread or dip into the luscious Roquefort mixture. Our eaters are always mad about this combination! We think yours will be, too.

Another delicious way to use apples is to put them in a relish, ladle it into small jars, decorate gaily and pack into Christmas boxes for your best friends. Make the relish now and give it time to set so you'll have time to sit during the holiday rush!

#### APPLE RELISH

Ingredients: 4 cups prepared apples (about 3 pounds ripe apples), 7 cups sugar, ½ cup vinegar, ½ cup finely chopped nut meats, ½ cup seedless raisins (rinsed in hot water and drained), ½ bottle liquid fruit pectin.

Method: First, prepare the apples: Core and grind about 3 pounds fully ripe apples. Measure 4 cups into a very large saucepan. Then make the relish: Add sugar, vinegar, nuts, and raisins to fruit in saucepan; mix well. Place over high heat; bring to a full rolling boil and boil hard 1 minute, stirring constantly. Remove from heat and at once stir in liquid fruit pectin. Skim off foam with metal spoon; then stir and skim by turns for 5 minutes to cool slightly, to prevent floating fruit. Ladle quickly into hot sterilized glasses; cover relish at once with ½ inch hot paraffin. Makes 11 medium glasses.

### Iron Duff Is Proud Of Place In Contest

By Mrs. Ray Milner  
Mountaineer Reporter

We are very proud of our fifth place winning in the district contest held in Asheville. We are hoping to strive harder to win first place next year. Among those attending the meeting at which the winners were announced were Frank Davis, Oral and Frances Yates, Mrs. V. R. Davis, Mrs. Manson Medford, Mrs. Glenn Tate, Mr. and Mrs. J. R. Caldwell, H. R. Bryson, Mr. and Mrs. Jack Ray, the Rev. and Mrs. A. R. Davis, and Mr. and Mrs. Ray Milner and family.

Mrs. Roy Phillips, Jr. spent last weekend with her parents, Mr. and Mrs. Ned Crawford. She is employed.

Polly McElroy is on the sick list this week and we hope she will soon be well and back in school.

Frances Yates, county winner in dairying, wrote a story of Dairy Production which appeared in the November issue of Dairy Extension News.

J. R. Caldwell and A. J. Plemons, who are serving in the Navy, spent the weekend with their families.

Among the children from this community who attended the birthday party given for Sandra Wood were Jackie Ferguson, Frances Davis, and Regina and Pat Milner.

### William Wvatt With Infantry On Korean Duty

40TH DIV. KOREA, Dec. 4 — Army Pvt. William F. Wvatt, son of Mr. and Mrs. James Wvatt, Route 3, Waynesville, recently arrived in Korea for duty with the 40th Infantry Division.

The former California National Guard division, which arrived in Korea during early 1952 is undergoing intensive post-graduate training. Private Wvatt, a farmer in civilian life, entered the Army last May and completed basic training at Fort Jackson, S. C.

### Bobby Caldwell Now In Korea

25th DIV., KOREA, Dec. 4—Pvt. Bobby R. Caldwell, son of Mrs.

Mattie Lee Caldwell, Maggie, recently joined the 25th Infantry Division in Korea.

Rushed to Korea during the early days of the conflict, the 25th Infantry took part in some of the

most bitter fighting on the peninsula. It is now undergoing intensive post-graduate training.

Private Caldwell entered the Army last May and completed basic training at Fort Jackson, S. C.

Because the earth wobbles on its axis latitude constantly.

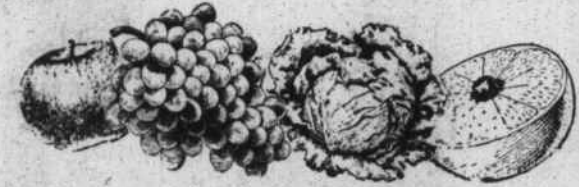
Tomatoes once were be poisonous.



FARM-FRESH FALL FAVORITES!

### Fruits and Vegetables

- Nice—4 Doz. Size Crisp Lettuce - - - - - Head 14c
- Juicy Florida Grapefruit - - 4 For 27c
- Florida Tangerines - - - Lb. 10c
- White Potatoes - - - 10 Lb. Bag 33c
- Delicious Sweet Pears - - - - - 2 Lbs. 25c
- Red Plum Cranberries - - - 1-Lb. Pkg. 25c
- Regalo Popcorn - - - - - 1-Lb. Pkg. 19c



A&P Fresh Purple Prune

### PLUMS

Sunnyfield—For Making Pancakes

### FLOUR 2

Sultana Light Meat Flaked

### TUNA

- Lifebuoy Soap - - 3 Reg. Bars 25c
- Lifebuoy Soap - - 2 Bath Bars 25c
- Silver Dust Lge. Pkg. 28c Gt. Pkg. 55c
- Rinso - - - Lge. Pkg. 25c Gt. Pkg. 49c
- Surf - - - Lge. Pkg. 29c Gt. Pkg. 57c
- Fab - - - Lge. Pkg. 29c Gt. Pkg. 69c
- Octagon Soap - - - 2 Giant Bars 15c
- Octagon Soap Powders - - - Lge. Pkg. 21c

### BAKERY BUYS

- Jane Parker Large Angel Food RING - - - Lge. Cake 49c
- Jane Parker Brown 'N Serve ROLLS - 2 1-Doz. Pkgs. 25c
- Jane Parker FAMOUS FRUIT CAKE - - - 1½-Lb. Cake \$1.29
- Jane Parker Enriched White BREAD - - - 16-Oz. Loaf 14c
- Dry Pinto Beans 2-Pound Package 29c
- Nucoa - In Quarters Margarine - - - 1-Lb. Pkg. 30c

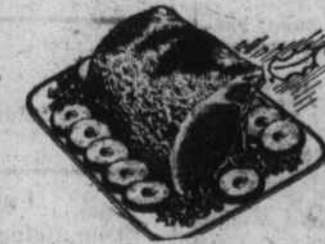
This Christmas...as always...  
A&P HELPS YOU EAT BETTER FOR LESS!

- Fruit Cocktail - - - - - 17-Oz. Can 27c
- Ready-To-Bake - Puffin Biscuits - - - - - 4 Pkgs. 49c
- Strietman Coconut Chocolate Drop Cookies - - - - - 1-Lb. Pkg. 49c
- A&P Fancy Freestone Peaches - - - - - No. 2½ 30-Oz. Can 39c
- Ann Page Blended Syrup - - - - - 24-Oz. Bot. 49c
- Mild and Mellow 8 O'Clock Coffee - - - - - 1-Lb. Bag 89c
- Hearty and Vigorous, Our Own Tea Bags 64-Ct. Pkg. 39c

- Sun-Glo Mixed Nuts 1-Lb. Pkg. 49c
- Holly Brand - Washed Brazil Nuts 1-Lb. Pkg. 47c
- Niblets Mexicorn 12-Oz. Can 20c
- Golden Corn Green Giant 2 17-Oz. Cans 35c

- Ann Page Fancy Tomato Ketchup - - - - - 14-Oz. Bot. 19c
- Ann Page Pure Ground Black Pepper - - - - - 2-Oz. Can 39c
- Sultana Small Stuffed Olives - - - - - 10½-Oz. Jar 49c
- Sultana Imitation Vanilla Extract - - - - - 8-Oz. Bot. 19c
- White House Non-fat Dry Milk Solids - - - - - 1-Lb. Pkg. 39c
- Nestle's Semi-Sweet Morsels - - - - - 6-Oz. Pkg. 29c

### "Super-Right" Meats



- Fresh Loin End Pork ROAST Lb. 49c
- "Super-Right" Freshly Ground Beef - - - - - Lb. 39c
- Chuck Blade Pot Roast - - - - - Lb. 49c
- Morrell Pride Fancy Sliced Bacon - - - - - 1-Lb. Pkg. 69c
- Center Cut Rib Pork Chops - - - - - Lb. 59c
- Bone In Plate Stew - - - - - Lb. 19c

- Swift's Brookfield Link Sausage - - - 8-Oz. Pkg. 33c
- Choice Milk Fed Veal Loin Chops Lb. 79c
- Boneless Ricket Pot Roast - Lb. 69c
- Small Headless Green Shrimp Lb. 65c
- Cubed or Tendered Veal Steak - Lb. 79c

These Prices Are Effective Through Saturday December 12th



- Weaver Aluminum Foil Roll 27c
- For Frying Purposes Wesson Oil 1-Lb. Tin 33c 3-Lb. Tin 33c
- Shortening Snowdrift Pt. Bot. 33c Qz. Bot. 89c
- Ajax Cleanser 2 Cans 25c



FROM BALENTINE'S

**SPECIAL OFFER**  
Coupons worth 25¢ IN EVERY 3 LB. TIN OF Swift's JEWEL SHORTENING 3 LB. TIN 77c

- Swift's Jewel SHORTENING 8 lb Pail \$1.69
- JEWEL OIL Pt. 29c
- JEWEL OIL Qt. 57c
- Morton's SALT 2 Boxes 21c

YOU CAN'T AFFORD TO MISS THIS BUY!  
MAXINE COMPLEXION SOAP . . . . . 10 Bars For 59c

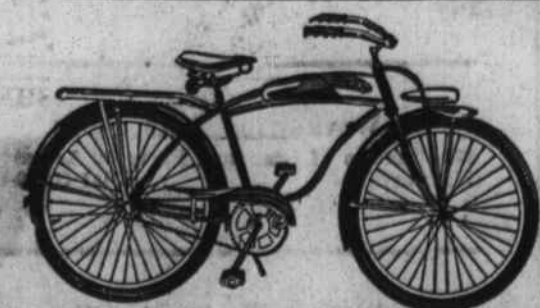
### LOOK AT THESE SPECIALS IN CHRISTMAS CANDIES!

- 2 LB. BOX PURE SUGAR STICK CANDY . 49c
- 1 LB. BAG HARD MIX CANDY . . . . . 29c
- 1 LB. BAG Marshmallow Peanut Candy . 35c
- 1 LB. BAG CHOCOLATE DROPS . . . . . 29c

### DON'T FORGET — WE HAVE THAT DELICIOUS CLAXTON FRUIT CAKE

1 LB., 2 LBS., & 3 LBS.

- Ocean Spray CRANBERRY SAUCE Only 20c
- Chesterfield's CORN MEAL ½ Bu. 98c
- 2 Lb. Bag Plantation BEANS 25c
- 25 Lb. Bag Plantation FLOUR \$1.35



WHO WOULDN'T LIKE TO WIN THIS GRAND BICYCLE JUST IN TIME FOR CHRISTMAS! VISIT OUR STORE AND LEARN THE DETAILS.

\$20.00 WILL BE GIVEN AWAY FREE AGAIN THIS SATURDAY AT 6 P. M. REGISTER EVERY DAY. YOU DON'T HAVE TO BUY A THING TO REGISTER. \$20.00 CASH AND ONE BICYCLE FREE TO SOME LUCKY PEOPLE! IT COULD BE YOU!

### BALENTINE'S SUPERETTE

EMMETT BALENTINE, Owner  
Corner Branner Ave. and Depot Street

