

# New Responsibility Law Is Now Compulsory Insurance Commissioner Scheidt Says

Motor Vehicles Commissioner Edward Scheidt explained in an official statement today the insurance features of North Carolina's new safety Responsibility Law, which goes into effect January 1 and has sometimes been misinterpreted as a compulsory insurance act.

Commissioner Scheidt pointed out that 43 other states now have the same type of law in effect and that in each one the same public misunderstanding occurred that now exist in North Carolina. The most commonly misinterpreted section of the Motor Vehicle Safety Responsibility Law is the one that exempts insured motorists from the security requirements, which he explained as follows:

"It cannot be repeated too often that our Safety Responsibility Law is not a compulsory insurance law. Certainly it is true that the only section of the new law that applies to insured motorists is the one requiring reports after an accident. But it contains nothing whatever that requires a motorist to carry insurance under any condition or circumstance. How a motorist meets his financial obligations after an accident is of no concern to the law, just as long as he meets them."

"Neither can it be repeated too often that 'just any kind of insurance' will not satisfy the security

provisions of our new law. The only kind of insurance capable of doing that is the kind that covers damage claims arising out of a motor vehicle accident. We have been informed by other states having this same kind of law that many of their motorists got into hot water because they thought their collision or fire insurance sufficed; a few even banked on their life insurance. None, of course, would pay off traffic accident damage claims brought by others."

"Our new law says, without attempting to repeat legal terminology, that the security requirements shall not apply to the operator or owner of a motor vehicle under any of the following conditions:

To the operator or owner if the owner had in effect at the time of the accident an automobile liability insurance policy with respect to the car involved.

To the operator, if not the owner of the vehicle, if there was in effect at the time of the accident an operator's liability insurance policy or bond with respect to his operator's liability insurance policy or bond with respect to his operation of motor vehicles not owned by him.

To the operator or owner if the liability of such operator or owner for damages resulting from an accident is, in the judgment of the Commissioner of Motor Vehicles, covered by any other form of liability insurance or bond."

"The first policy is the kind that is commonly carried by an insured owner of a private passenger car. The second is the kind that is carried by persons who drive but do not own motor vehicles. The third applies to forms of liability insurance that are carried only by business and industrial firms. All, it should be noted, protect the public against damages caused by drivers and owners of motor vehicles."

"It should also be remembered, of course, that the law gives un-

## RETURNS FROM RED PRISON CAMP



A PRISONER IN SOVIET CAMPS since 1944, Frank Rohrbacher Jr., is reunited with his parents, Mr. and Mrs. Frank Rohrbacher, of Stamford, Conn., as he arrives in New York aboard the liner Independence. Taken from America to Hungary at the age of five, young Rohrbacher was forced into the Nazi army, captured by the Reds and imprisoned.

## Kennedy Ties Hockey Record

TORONTO (AP)—Ted Kennedy, captain of the Maple Leafs, tied a 21-year-old National Hockey League record when he scored against Boston after only eight seconds of play. The record was set by Ron Martin of the New York Americans on Dec. 4, 1932.

insured drivers, who are involved in accidents, 60 days in which to furnish proof of non-liability, make satisfactory arrangements for the settlement of claims, or deposit security up to \$11,000 to cover claims for damages they cause, before their driving license will be suspended."

More than 65 million emigrants left Europe between 1820 and 1930.

## 'Evie' Wears Riding Togs To Elite Capital Parties

By JANE EADS

WASHINGTON — Handsome Mrs. Lawrence Wood Robert, wife of "Chip" Robert, former treasurer of the Democratic National Committee, is the only woman I know who can wear riding clothes to Washington's elite parties and get away with it.

Of course no one looks so well in riding clothes, or wears them with such an air, as the blond and irrepressible Evie, who since her debutante days has been a headliner in Capital society news. Tall, cool and beautiful, the daughter of a conservative old-line Washington dowager, she has a flair for flaunting the social customs of the town — and people are amused.

She once gave a birthday party for her horse, and of course everybody showed up — with presents yet. She once rode an elephant in a circus and boasts about being kicked out of every school she ever enrolled in. Now she insists on having her party daughter, Birnie, 14, stay in, and has her tightly enrolled in one of the best and most exclusive schools around here.

Evie was one of a group of honored ladies sitting at the "celebrity table" at the weekly fashion luncheon given by Mrs. Gladstone Williams. Others, besides myself included Mme. Munthe de Morgenstierne, wife of the Norwegian am-

bassador, who is dean of Washington's diplomatic corps and Mme. Halvard Lange, wife of the Norwegian foreign minister, who is chief Norwegian delegate to the UN assembly.

It was Mme. Lange's first American fashion show, and she observed that it compared favorably with many she has seen in Paris. Neither of these stately, very feminine ladies liked the trousered costumes shown for home entertaining, though they both said they wished they had tiny waists like the models. (Me too!) Mme. Lange, a gentle blue-eyed aristocrat, is the daughter of Christian Frederik Lange, former president of the Norwegian parliament and one-time Norwegian secretary of defense. She has two sons and a daughter, for whom she hopes to do some Christmas shopping in New York before returning to her homeland.

Evie, in her riding clothes, participated in the program, talking mostly of her young daughter's 68,000-mile air trip around the world this summer with her father, now an Atlanta consulting engineer.

In fresco painting on wet plaster, irregular hairline cracks appear between the sections as successive areas are filled with plaster. These are covered with a very durable paint made of cottage cheese, lime and pigment.

## Oona Goes Skating



AT AN ICE RINK in Lausanne, Switzerland, Mrs. Oona O'Neil Chaplin gets a few pointers in skating from Nigel Brown-Rovida, Swiss champion. While her husband, screen clown Charlie Chaplin, rarely appears in public since taking up residence in Europe, Oona and their children go skating regularly. (International)

## Francis Cove W.S.C. Will Sponsor Sale

A sale of gift articles and will be held at Burkin's Store, Main Street Friday and Saturday by the Woman's Society of Christian Service of the Francis Chapel Methodist Church.

The sale will open Friday p.m. and will continue through regular store hours until Saturday at 5:30 p.m. On sale will be a variety of handmade gifts including stuffed animals, aprons, cases, and dolls. There will be homemade cakes and candy.

The sale is being held as a fit for the fund to complete new Church.

## Junaluska PTA To Have Supper-Program

The Lake Junaluska Teacher Association will meet at a covered dish supper Monday, December 14, at 6:30 p.m., at the school cafeteria.

Following the supper a program will be presented in the auditorium. The Rev. J. H. Coleman will be the speaker and devotion will be given by students of the grade. Mr. Coleman's subject will be "Character and Spiritual Education."

Michigan State is a member of four inter-collegiate conferences: NCAA, CCC, IC4A and the Ten.

It is almost impossible to walk in the Dead Sea because arms and legs protrude from the thick water.

## WANT ADS

FOR SALE—Parakeets and Canaries. Stovall's 5c & 10c Store. D 10-14-17

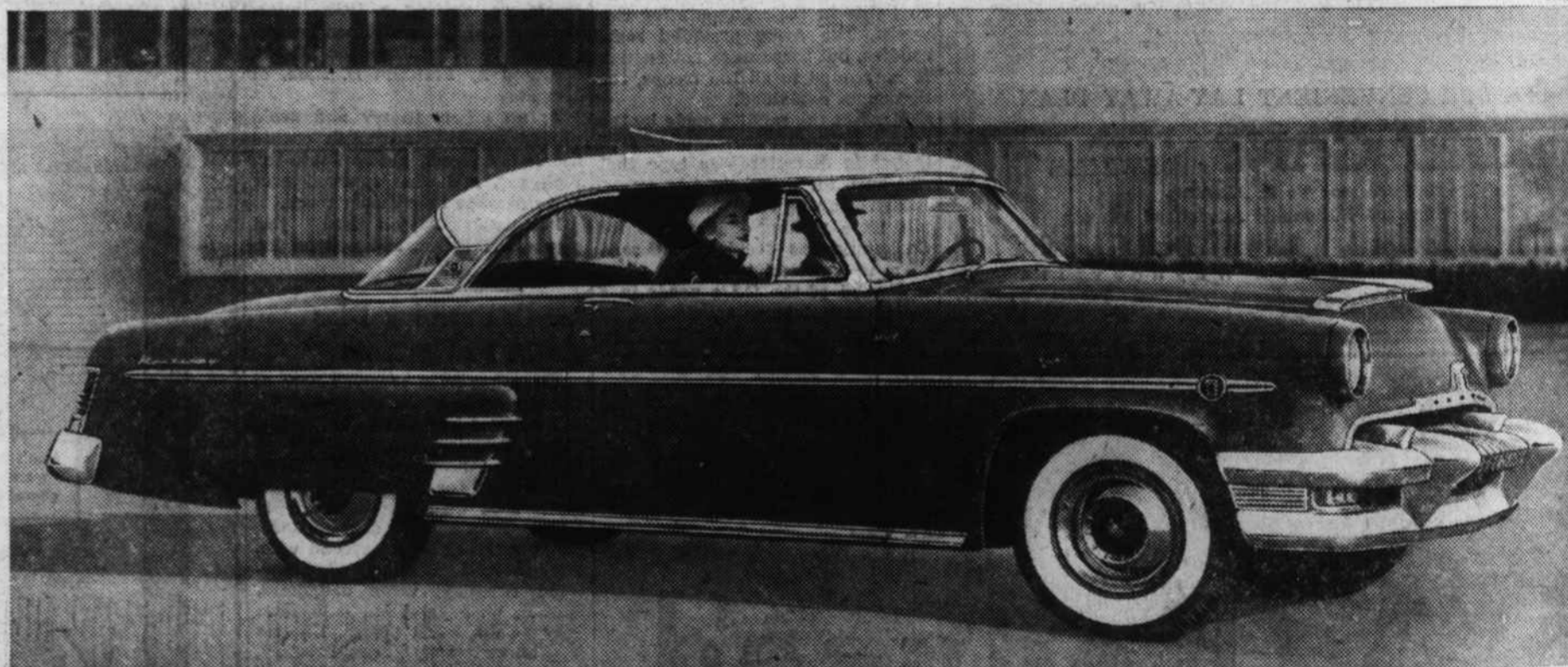
FOR RENT—One nice two-room apt. with private bath—\$15.00 per month. Also one nice three room apt. \$20.00. Both wired for electric stove. 606 N. Main St. Phone GL 6-5574. D 10-14

FOR SALE—1951 Chevrolet. Contact Frank McClure, Eagle's Nest Road or Phone GL 6-3367. D 10

## First Showing Today

# NEW 1954 MERCURY

## With New 161-Horsepower Overhead Valve V-8 Engine



NEW STYLING, NEW INTERIORS! Mercury is completely new in design, front and rear—looks wider, longer, lower than ever. Stunning new colors, many new fabrics never before available.

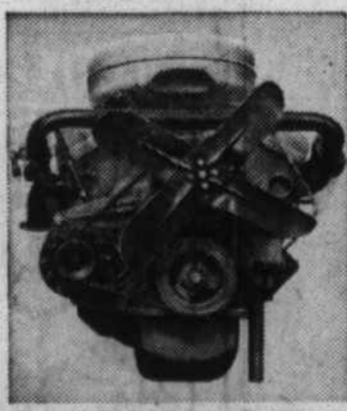
## Entirely new performance that makes any driving easy!

DRIVING ease is something everybody wants—but you don't know what easy driving is until you drive this new 1954 Mercury!

The new 161-horsepower V-8 engine is only part of the story. New engine design gives you the easiest, smoothest, *safest* response you've ever experienced in an automobile—and with greater economy, too. You use only a small part of that energy for normal driving—so you've a tremendous reserve available on hills, highways, in traffic, *anywhere*.

Ball-Joint Front Suspension is found only in Mercury in its price class. A few minutes behind the wheel of this wonderful 1954 Mercury can tell you far more than words how much easier and safer it makes cornering, turning, and parking.

For the easiest driving you can buy—drive a Mercury!



All-new V-161 for easier handling! Here's the finest engine ever used in a popular-priced car. And it has a new 4-barrel vacuum-operated carburetor and overhead valves. Its 161 horsepower gives Mercury more power per cubic-inch displacement than any car in its class for easier, safer acceleration... and even greater economy.

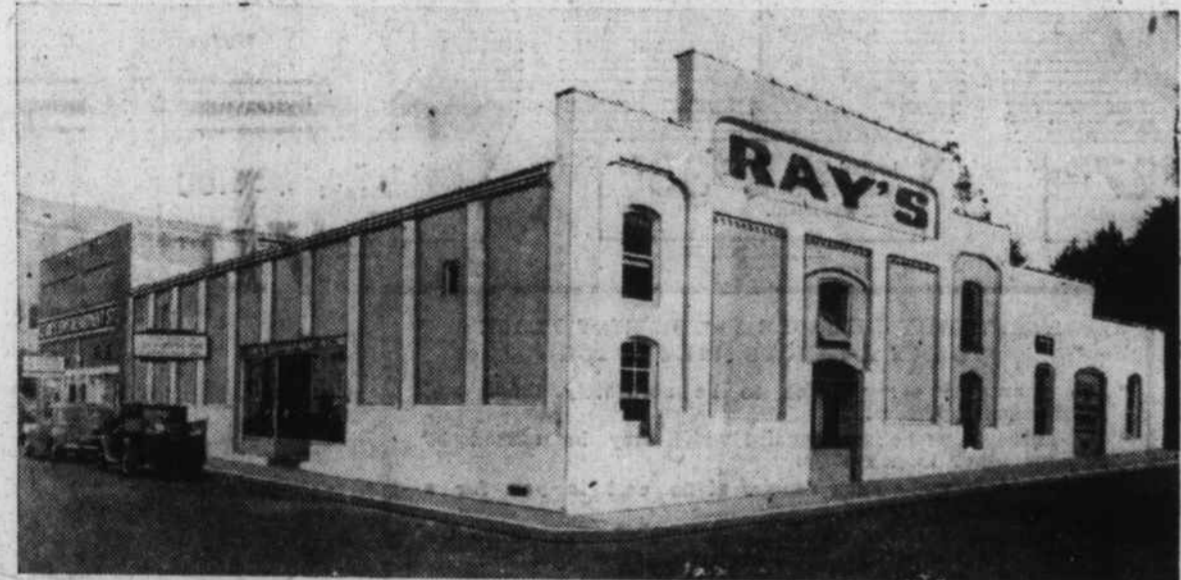


New ball-joint suspension for easier, safer control. This is a Mercury first—exclusive in its class—and gives an effortless new kind of handling ease—better cornering and road stability—easier parking. Makes driving as easy as you wish—5 optional power features! 1) 4-way Power Seat, 2) Power Steering, 3) Power Brakes, 4) No-shift Merc-O-Matic Drive or gas-saving Touch-O-Matic Overdrive, and 5) Electric Power Window Lifts.



First transparent-top production car—The Mercury Sedan opens up new horizons in automotive design—a dream car of tomorrow come true today. Now you can enjoy overhead visibility with the comfort of the wind and weather protection of a coupe. The permanently fixed plexiglas roof is specially tinted to keep out glare. Exclusive interiors add to distinction. The cost? Much less than you would expect. Here's the car that will cause more excitement than any other on the road in 1954!

## For Your — PRE-CHRISTMAS SHOPPING RAY'S FALL SALE CONTINUES THRU SATURDAY



## BARGAINS FOR ALL THE FAMILY CHRISTMAS GIFTS AT BARGAIN PRICES

Incidentally —

Every Customer at Ray Stores — Including Super Markets — Has a Chance To Win Free —

- One of Six \$10.00 Prizes Weekly.
- \$100 CASH PRIZE DEC. 19

FREE  
L. BON  
WRE

# RAY'S DEPT. STORE

## WAYNESVILLE MOTOR SALES

Main Street

Waynesville