

Mountaineers Take Two From Fines Creek Cagers

Down The SPORTS TRAIL

By W. CURTIS RUSS

An Example Of Real Sport

The following is an editorial which appeared recently in the Chapel Hill Weekly, and readers of this column will enjoy the opinions expressed here of a timely subject:

In the football game here on Thanksgiving Day the Duke freshmen and the Carolina freshmen turned themselves loose. The excessive caution that you see in so many inter-collegiate contests, with both teams fearful of taking daring plays, was agreeably absent. Result: A lot of touch-downs, seven for Duke and four for Carolina. It was a spirited match—something doing every minute. And it was an example of real sport.

Jack Horner said of the game in next day's Durham Herald:

"There's a reason for all of this point-making by the freshmen. They have no pressure riding upon their young shoulders. The alumni don't care who wins this one; it's the varsity game they are interested in.

"As a result, the coaches know their jobs don't depend upon these freshman games and the players realize it's just another ball game instead of a life or death proposition.

"If the coaches and the varsity took the same attitude the football-going public would derive more enjoyment out of the game."

Probably many people had, on reading this comment of Mr. Horner's on last week's freshman game, the same thought I had: "Why, that's what every game ought to be, a game played for the fun of it, for the fun of the players and the fun of the spectators, not as if it were an event of colossal importance."

The day after the Horner article appeared, Dick Herbert, the Raleigh News and Observer's sports editor, wrote:

"It will be a great day for college athletics when less emphasis is placed on won-lost records."

Every season there are "unofficial" football games; that is, games not on the regular schedule. These are played, most of them, with the boldness and abandon that characterized the Duke-Carolina freshman game, and so reflect the right conception of what football is for. They get very little attention in the newspapers and nobody gets excited about them. But the regular games are played—and not only played, but anticipated and reviewed—in an atmosphere of the most extreme tension.

Thus there is cultivated an anxious concern about football games that has nothing in it that partakes of the spirit of true sport. A football game ought to be a performance whose purpose is to give people immediate pleasure, not something to read statistics about and to gloat over or mourn over as though it were an encounter to determine the destiny of the world.

Mr. Horner and Mr. Herbert express very sensible opinions in the passages I have quoted. I hope they will undertake to do some missionary work among alumni and in their own sports-writing brotherhood to reduce the excessive seriousness in the public attitude toward sport. They and other sports editors can, if they want to, do a lot toward educating the public to the truth that, in Mr. Horner's phrase, a game is "just another ball game instead of a life-and-death proposition."

Use Want Ads For Quick Results

STRICTLY BUSINESS by McFeatters



"Speak up, Mr. Pottleby—I can't hear you!"

THE BEST GRADE "A"

DRIVE - IN IN TOWN

Breakfast Our Specialty!

★ SANDWICHES ★ DRINKS

Delicious Bar-B-Que Chicken

Ideal for Sunday Picnics and Dinners

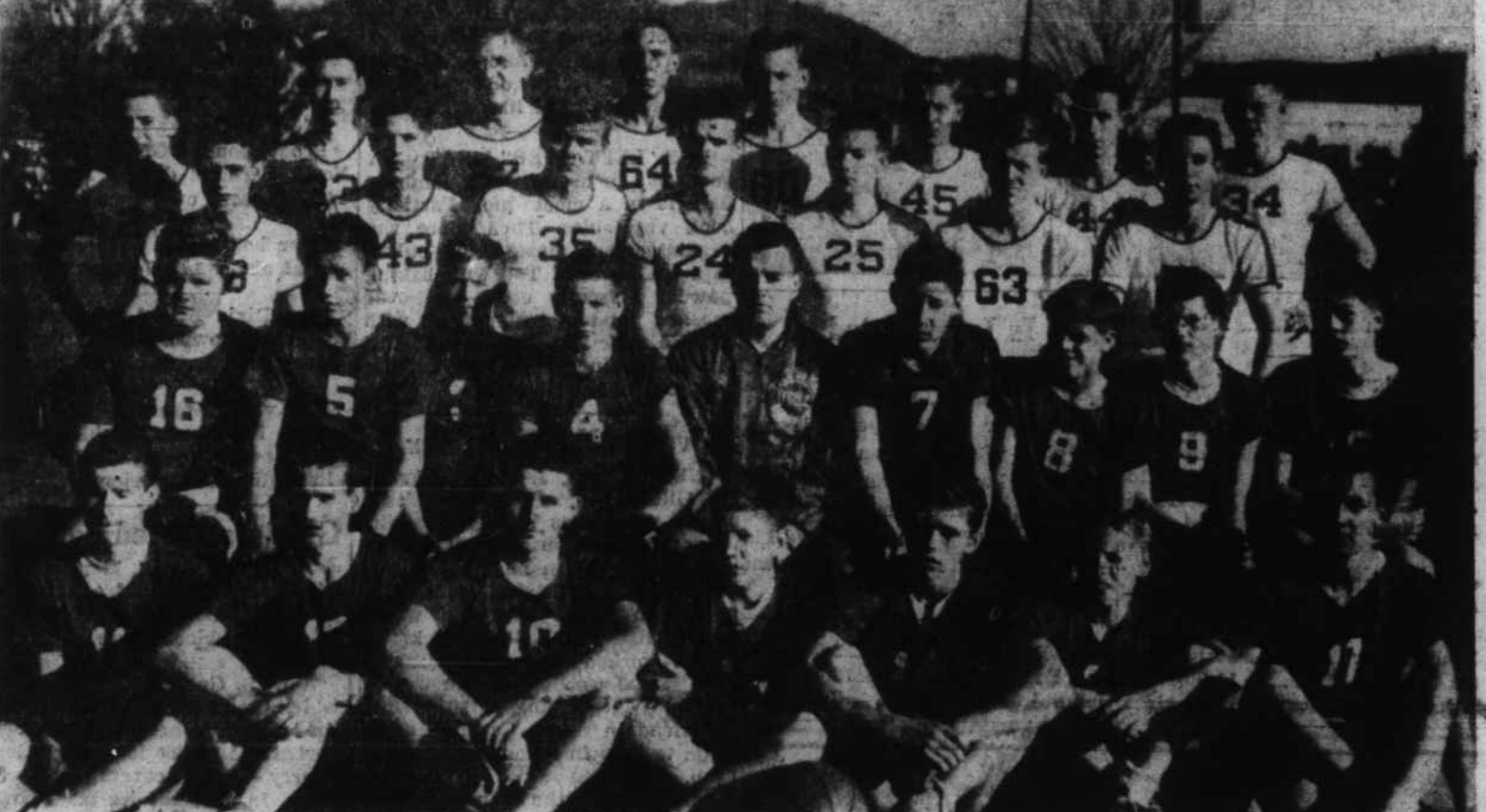
CHARLIE'S

Opposite Pet Dairy



DEFENDING STATE CHAMPIONS are these Bethel Belles, who have already won two games this year over Clyde and Fines Creek. This 37-member squad includes (front row, left to right): Judy Blaylock, Gail Inman, Mickey Cooke, Doris Johnson, Willie Ruth Henson, Birdie Heatherly, Jackie Gibson, Annette Sheffield, June Smith; (second row): Marie Edwards, Catherine Pressley, Margaret Mease, Billie Ruth Rogers, Ruth Ellen Henson, Barbara Reece, Sue

Kelley, Janette Sheffield, Janet Foster, Barbara Henson; (third row): Gerald Layman, Barbara Jones, Eva Nell Henson, Annette Lowe, Louise Pinkerton, Mary Kay Phillips, Barbara Messer, Vera Burnett, Nancy Davis; (fourth row): Peggy Edwards, Patsy Wilson, Shirley Poston, Gail Revis, Doris Pressley, Pauline Shepherd, Peggy Houston, Judy Blazer, and Helen Ledbetter. (Mountaineer Photo).



MAJOR CONTENDERS for the Haywood County basketball championship for 1953-54 are these Bethel Blue Demons. Coach C. C. Poindexter's quintet was runner-up to Canton last season. This year's squad includes (front row, left to right): Joe Bob Fish, Boyd Shipman, James Fore, Daryl Grant, Eugene Shepherd, Harold Queen, Gay Barker; (second row): Tommy Singleton, Harold Ship-

man, Russell Terrell, Dean Reece, Lowell Powell, Jack Phillips, Carroll Mease, Eugene Messer, Gerald Hill; (third row): Charles Stamey, Clifton Terrell, Charles Cathey, Wray Burnette, L. M. West, David Vance, and Troy Hargrove; (fourth row): Roy Green, Burton Wells, Bill Deitz, Toby Capps, Worth Wells, Gerald Owen, Calvin Wells, and Neal Kelley. (Mountaineer Photo).

The Sports Scene PRO and CON

By BOB CONWAY
Mountaineer Staff Writer

Although Waynesville was not too impressive in the 28-25 opening win against Crabtree-Iron Duff Friday before last, we asserted in this column last week that the Mountaineers have all the stuff it takes to build a good ball club.

Last Friday after seeing the Gold and Black basketballers pour in 68 points against Fines Creek, we're more convinced than ever that Coach Bill Swift has put together a strong cage crew—one that might possibly give Waynesville opponents almost as much trouble as did Coach Weatherby's undefeated gridders this fall.

Of course, it's much too early to light the bonfires and start celebrating because the Mountaineers have played only two games and have yet to meet the county's top teams. They won't meet tough Haywood opposition until they tangle with Canton's 1952-53 champion Black Bears, led by high-powered Charlie Carpenter.

But it is certain that the hardwood highlanders have the traditional Waynesville spirit—and also, this year—a lot of height. We don't know it to be a fact, but we've seen all six of the county's basketball teams and the Mountaineers appear to have most of the altitude. Next to them, comes either Canton or Clyde.

Another encouraging thing is that this year's WTHS quintet appears to have a well-balanced attack. Four men on Friday night contributed a lot to the scoring. Aldridge got 17, Nichols 15, Cogdill 13, and Leatherwood 12.

"Jumping Joe" led the Gold and Black even though he didn't enter the game until near the end of the first half. And Leatherwood collected a dozen markers despite the fact that he fouled out early in the fourth quarter.

Backfield stars Tom Cogdill and Tommy Nichols seem to be able to handle a round ball as well as an oval-shaped one, so they should give the Swift men an added punch.

Big 6-5 center Gerald Baker is looking better on his pivot shots and soon may be good for four or five buckets a game.

One thing the Mountaineers need is a good set-shot artist who can hit 'em from way out in the suburbs. When you run up against a strong defensive squad, long-range marksmanship is often the distance between winning and losing.

Perhaps the Mountaineers already have such a sharp-shooter, but so far they've been able to work the ball in close enough to launch most of their shots from around the

Mountaineers To Invade Clyde Tomorrow Night

On tap for basketball fans in Haywood County Tuesday night are these games: Waynesville at Clyde, Crabtree at Bethel, Spring Creek at Fines Creek, and Hendersonville at Canton.

The Waynesville Mountaineers, with victories over Crabtree-Iron Duff and Fines Creek, are the only unbeaten team in the county. The WTHS girls, the Mountaineers, dropped their first game to Crabtree, but rebounded last week to swamp the Fines Creek Fillies.

The Mountaineers poured 68 points through the hoop in beating Fines Creek and are hoping to subdue Clyde with a similar barrage. The Mountaineers tallied 64 points, with Linda Welch getting 42.

In their meeting last Tuesday, Bethel split games with Crabtree—with the Belles winning a close encounter and the Blue Demons going down to defeat in another hard-fought tilt.

The Fines Creek boys are a scrappy squad but lack of height has cost them heavily in losses to Bethel, Clyde, and Waynesville. Their marksmanship, however, may carry them to victory over Spring Creek tomorrow night.

The Fillies, led by Joan and Catherine Ferguson, have lost to Waynesville and Bethel and have beaten Clyde.

Canton's Black Bears now are battling 500—with wins over Crabtree and Mars Hill and losses to Lee Edwards and Asheville School.

Duke Snider's ninth home runs off Cardinal pitching at Ebbets Field this year was a National League record. The previous high for a hitter against one club in one park was eight by Ralph Kiner against Boston in Pittsburgh during the 1947 season.

Fred Enke has coached the University of Arizona basketball team for 28 years. During that time his squads have won 426 games and lost 206.

All in all, the Waynesville quintet shapes up as a potential powerhouse. With a little experience, they should be able to give Charlie Carpenter and his bruins more trouble than somewhat.

Clyde Splits Games With Crabtree-ID

By BOB CONWAY

A night of cage warfare on the Clyde floor last Friday left the Clyde Cardinals and Crabtree Iron Duff even as the Crabtree lassies won their third game of the season, 47-31, while the Cardinals upheld Clyde's honor with a 32-28 win of the boys' tilt.

Bonnie Sue Justice's 23 points put the game on ice for Crabtree. Eula Jo Stamey with 16 points and Barbara Jolley with 13 were high for the Cardinalettes.

Frank Thompson, with 10 points, topped the winning Cardinals, but Caldwell's 14 for Crabtree gave him the scoring honors for the night.

Girls' Lineup:
Crabtree (47) Clyde (31)
F—B. Smith (7) (16) Stamey
F—Justice (23) (3) Pressley
F—Bradshaw (6) (13) Jolley
G—James Collins
G—Hoglin S. Stamey
G—Hill McCracken

Subs—Crabtree: Price 5, Bradshaw 7, Best, L. Sanford, Pressnell 4, McLary, Ferguson, Hill, Crawford, Sutton, McCracken. Clyde: Owenby, Russell.

Half time score: 29-18 Crabtree.

Boys' Lineup:
Crabtree (28) Clyde (32)
F—J. Crawford (9) (6) Rogers
F—Caldwell (14) (8) Jolley
C—T. Crawford (1) (10) Thompson
G—Bryson (1) (7) Medford
G—Pope (2) (1) Fisher

Subs—Crabtree: Tate, Smith 1, McElroy, Walker, Hoglin. Clyde: Dodson, Livingston.

Half time score: 20-18 Crabtree. Referees: Roberts and Stamey.

Bethel Wins Twice Over Mars Hill

Getting back to their old habit of winning double features, the Bethel Blue Demons and Belles captured another pair last Friday by walloping the Mars Hill cagers. The boys won 64-49, while the girls were victorious by 42-35.

The Belles won against Crabtree-Iron Duff last Tuesday, but the Blue Demons suffered an upset at the hands of the Crabtree boys.

Toby Capps hit 26 points to clear the patch for the Demons, with able assistance from Gerald Owen, who collected 16. John Vance was the big growl for the Mars Hill Wildcats with 21 points.

High-scoring Peggy Edwards again led the way for the Belles with 29 markers, while Edith Shepherd was high for Mars Hill with 17.

Girls' Lineup:
Mars Hill (49) (42) Bethel
F—Ponder (11) (29) Edwards
F—Riggs (6) (1) Rogers
F—Gibbs (9) (9) Wilson
G—Ledford Shepherd
G—Hawkins Revis
G—A. Ponder D. Presley

Subs: Mars Hill: Shepherd 17, Craig, Bethel: Poston 3, E. Henson, Lowe, Pinkston.

Half time score: Bethel, 25-20.

Boys' Lineup:
Mars Hill (49) (64) Bethel
F—Vance (21) (16) Owen
F—Ponder (6) (4) C. Wells
C—DeBruhl (9) (26) Capps
G—Crawford (3) (9) Deitz
G—Reese (8) (2) W. Wells

Subs: Mars Hill: D. Metcalf, Carter 2, O. Metcalf, West, Bethel: B. Wells 7, Stamey, Hargrove, Burnette, C. Terrell, Vance.

Officials: Henson and Rhodes.

Milner, Crawford At Banquet For All-Americans

Two former All-Americans who once played for Waynesville High—Freddie Crawford and Bill Milner—are among a group of North Carolina All-Americans being honored by the Charlotte Quarterback Club at a banquet today.

Both Crawford and Milner won All-American berths while playing for Duke's Blue Devils.

Other Carolinians at the Charlotte banquet today were: George Barclay, Paul Severin, Rob Gantt, Pat Preston, Banks McFadden, Beattie Feathers, Gene McEver, Charlie Justice, Art Weiner, Kenny Powell, Dan Hill, Meadows Bobb, Gage, Stymy, Thomson, P. Pearson, Wade Walker, Don Blanchard, Jackie Calvert, Irv Holdash, Frie Knotts, Ace Parker, Joe Blalock, and George McAfee.

Charlie's Place Downs Canton 3-0 In Bowling Loop

Charlie's Place captured three games from the Canton All-Stars Saturday night on the local alleys in a Haywood County Bowling

Waynesville netted only points against Crabtree last but the Mountaineers found range against Fines Creek day night and kept the basket with a 68-47 victory over the nets.

The Mountaineers also showed their lethargy of last week blasted their opponents, 64-47 this game. Linda Welch raked nets for 42 points to break past scoring records.

Although he didn't enter the game until near the end of the first half, Joe Aldridge led highlanders' attack with 17 points. Tommy Nichols tallied 15, Cogdill 13, and Billy Leatherwood 12.

Leatherwood undoubtedly have scored more, but he was out early in the fourth quarter was followed a short time later by Fines Creek's high scorer, Hunter, who tossed in 16 before his exit.

Clayton Payne collected points and Wilson Messer led the Hornets.

The Mountaineers got off a fast start to pile up a 11-3 lead the first quarter, but as the second quarter opened the Hornets sank eight straight points to the Waynesville marksmen score again. The two teams bled on even terms the remainder of the period, with the Mountaineers on top 25-23 at half time.

The Gold and Black widened margin in the second half to a 46-39 lead at the end of the third period, and then drew in the last quarter.

Coach Joe Turner's Fines cagers were scrappy and mined, but their lack of depth put them at a serious disadvantage against the towering Mountaineers, who have the tallest in the county.

In the girls' game the Mountaineers had to come from behind after trailing the Fillies 19-10 at the end of the first quarter. They took over the lead in the second quarter; ended the first half front 34-28 and led 53-37 at three-quarter mile post.

Linda Welch, 6-foot Mountaineer forward, made most of her points on bank shots under basket. Shirley Jones collected points, while Betty Smith had 10.

One of the county's best hardwood marksmen, Joan Ferguson, led the Fines Creek with 24 markers, while Catherine Ferguson netted 19.

Girls' Lineup:
Fines Creek (50) Waynesville
F—Ferguson (24) (9) B. F.—C. Ferguson (18) (9) B. F.—Moore (5) (10) G—Price
G—Prantham
G—Rogers

Subs—Fines Creek: Just Haynes, Davis, Price, L. Waynesville: Roland, Smith, Carver, Howell.

Half time score: 34-28 Waynesville.

Boys' Lineup:
Fines Creek (47) Waynesville
F—Messer (10) (15) B. F.—C. Payne (13) (13) C—Hunter (16) (5) G—Evens (3) (12) Leatherwood (3) (3)

Subs—Fines Creek: J. E. Waynesville: Aldridge 17, Ballance, Queen, Davis, H. er, Ezell, Grah 3, Steve Davis, M. Davis.

Referees: Bumgarner and

Asheville Tops Canton Five 54-49

Canton's Black Bears lost second game of the season night to the strong Asheville School Blues, 54-48. In the preliminary, the Canton edged the Little Blues 46-40.

Charlie Carpenter tallied the Bears, but Asheville's Hicks, a center, led all with 24 points.

The Blues led nearly the way, holding a 16-8 margin and of the first quarter. At the half, and 41-31 at the third quarter.

Canton led Asheville with 22 points while Hicks netted the Asheville School 15.

The Lineup: Asheville (54) Canton (48)
F—Carpenter (10) (14) F—Williamson (9) (12) C—Milner (6) (3) G—Wilton (3) (1) G—D. Milner (9) (2)

Subs: Canton—Rhine Morgan, Dinkworth, Curtis, Asheville School—McMillion 2, man, Moore.

Half time score—Asheville 28-17

Referee: Crenshaw and

League match. The winner piled 2762 pins while the notched a total of 2597. Elmer Dudley, with 496 and 191 and a high 526 paced the winners. Deitz, of Charlie's, had second series, of 507.

Want Ads bring quick